

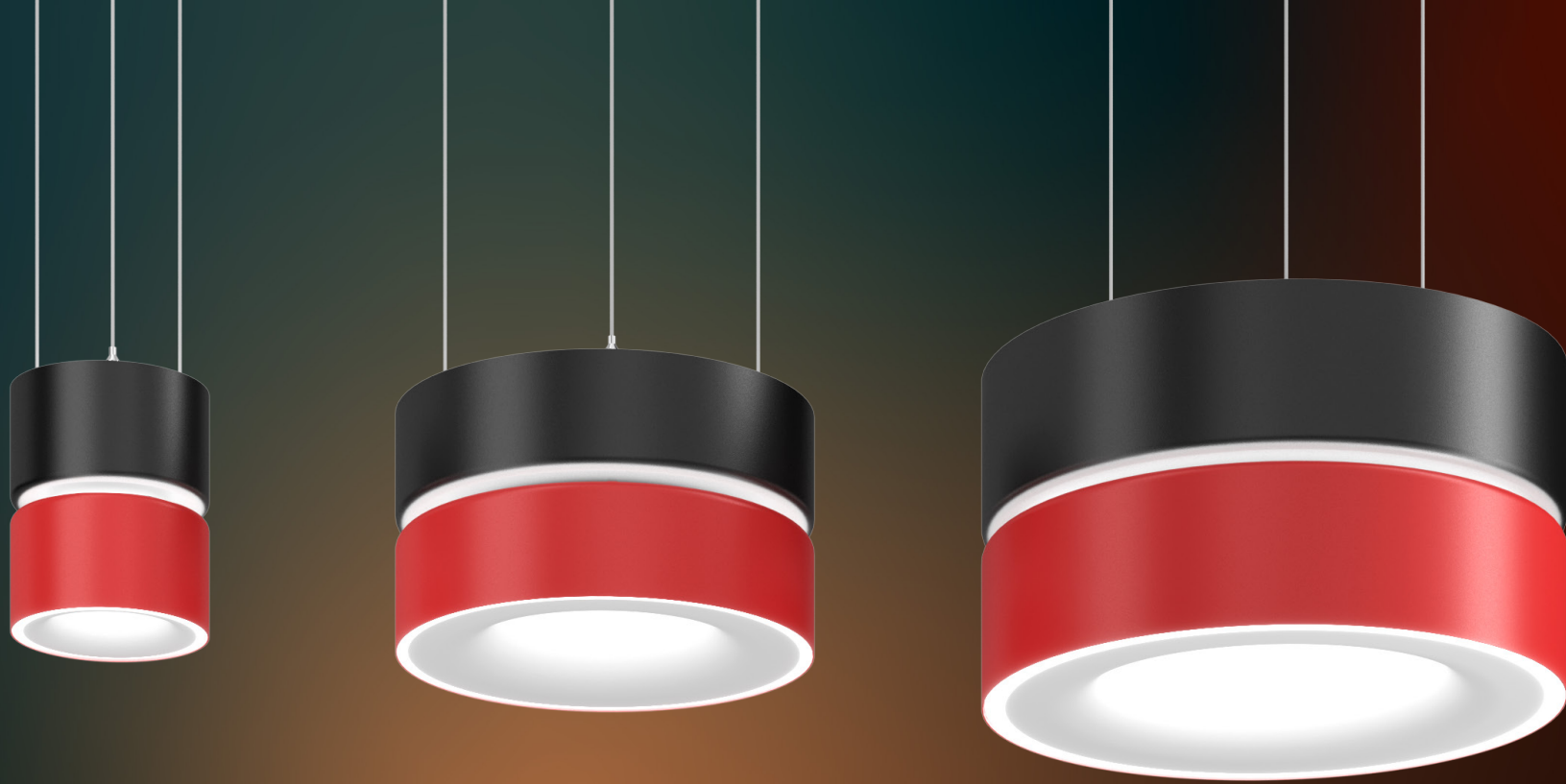
# TRIPLE™



**TRIPLE** is a powerful but elegant pendant ideally suited for high performance applications. It's unique design brings both form and function to any space.



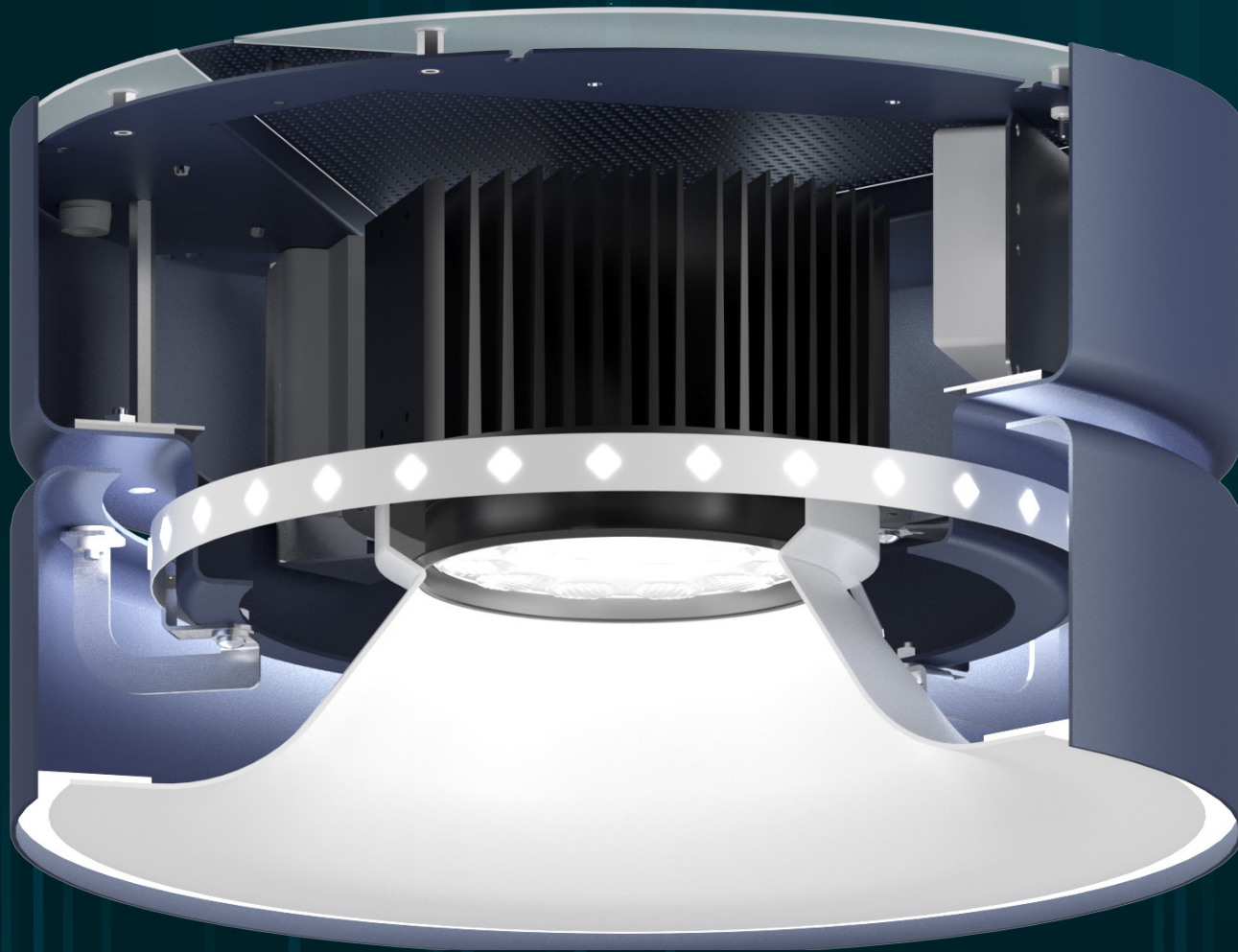
- **TRIPLE** is designed to facilitate the internal air flow to cool its components.
- The mid body gap, along with the gap between the funnel and the housing, plus concealed openings cleverly located on the fixture's top side, allow for air circulation.
- The performance of the fixture is evident when the upper and lower modules are on.
- With the unique design of the lower module, the glare is significantly reduced.
- The lower funnel creates a gradual transition between the bright centre and the darker outskirts making the fixture appear approachable despite its power. To accentuate this feature, the funnel can be finished in a contrasting color.



Three sizes - 6", 13" and 19"



Three sizes - 6", 13" and 19"



The uniqueness of **TRIPLE** is found in its multi-directional lighting system consisting of an upper module with indirect lighting, glow ring & lower funnel edge light, and direct illumination lower module. Triple features single, dual and triple circuit options.

**TRIPLE'S** optional third circuit, which illuminates the mid-body (glow ring) and lower gap (glow around the funnel) offers a further sophistication to the fixture. This can provide a form of nocturnal illumination, highlighting the fixture's design.

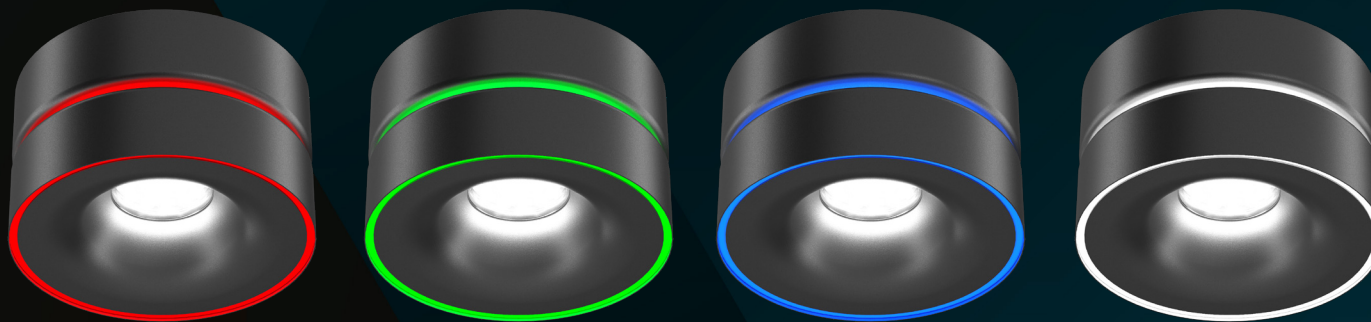


For example, imagine walking past a retail window after closing time; if you look beyond the window display, you would see floating illuminated circles which would enhance the space's appeal.

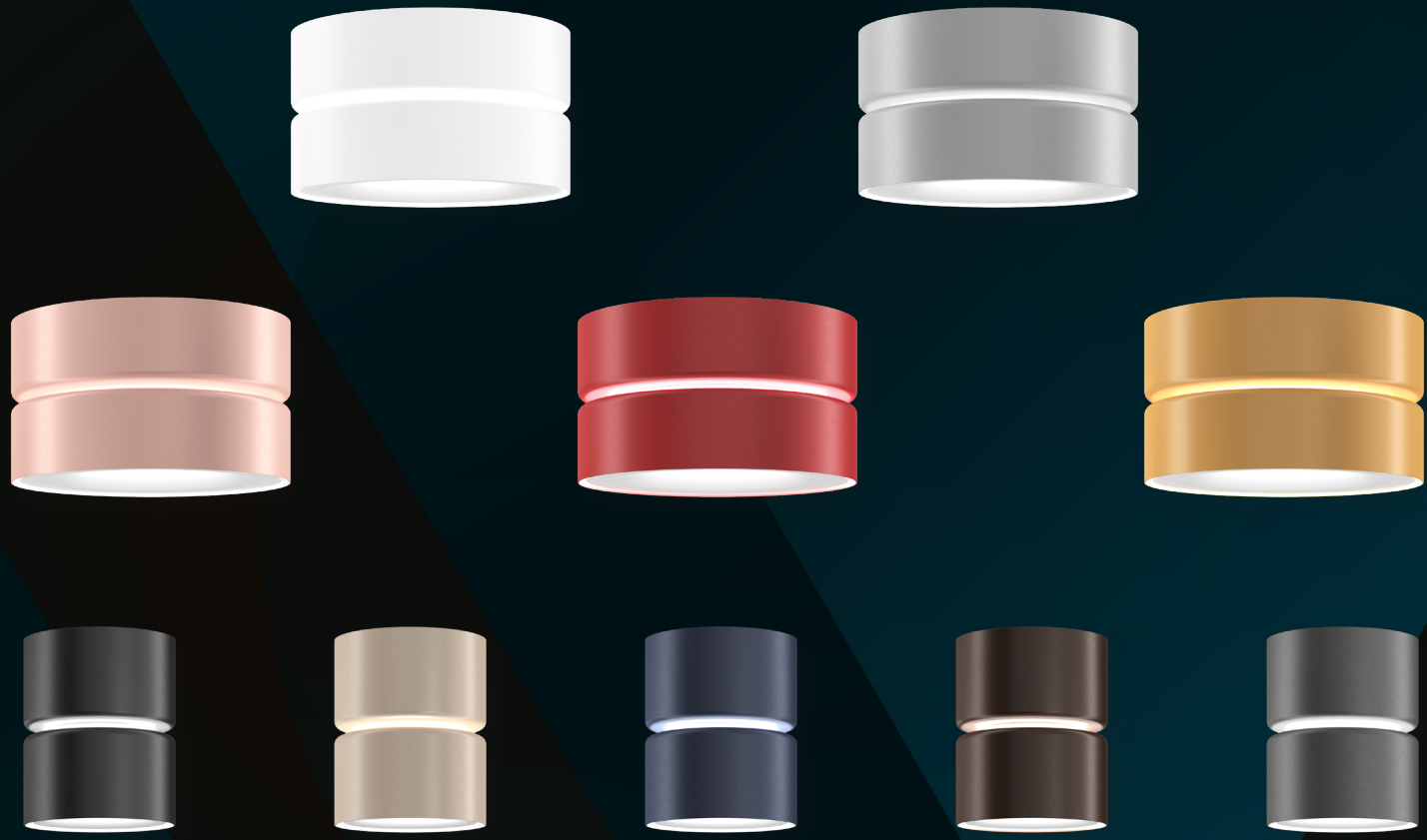


DIRECT beam angles: 15°, 30°, 50° & 70° and INDIRECT

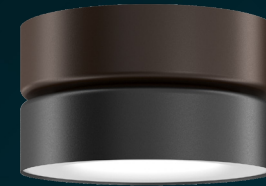
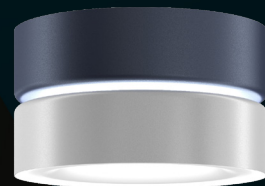




RGBW available with glow ring



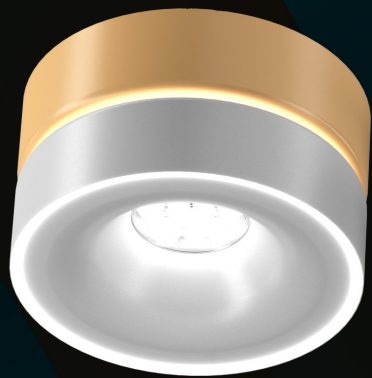
SOLID finishes



MIX 'n' MATCH finishes

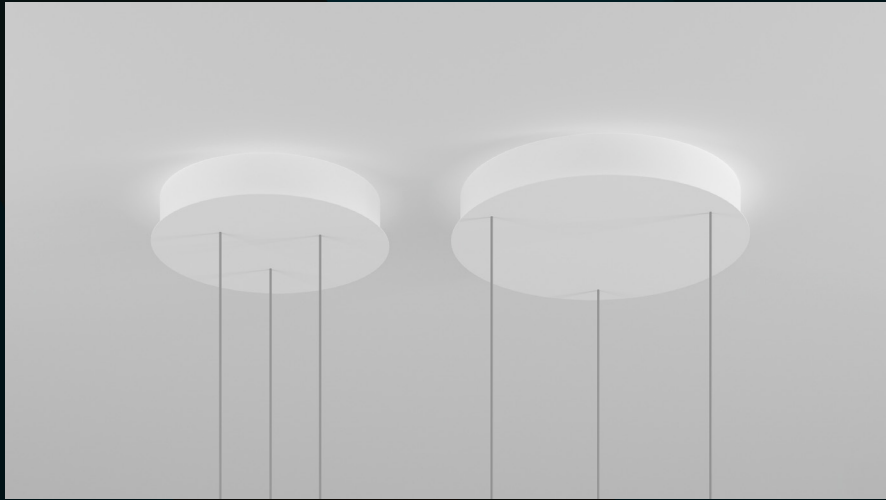


DIRECT and INDIRECT illuminated views of the fixture with glow ring in the center.



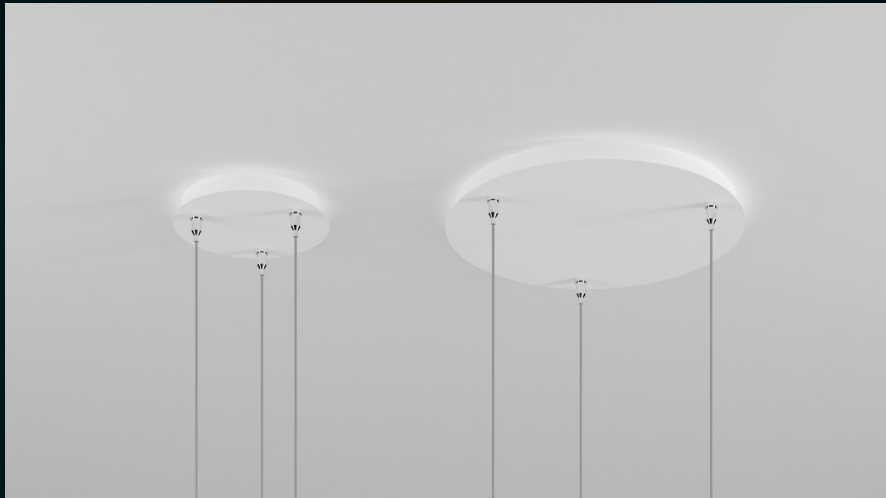
Specify **FUNNEL** finishes

## Canopy options for TRIPLE



### CANOPY A (CN1)

Canopy A - Drivers are integral within the canopy. If ordering the 6" diameter fixture version only in any combination other than V1, DA01, DB01 and DC01, then a larger version of CN1 will be supplied. See dimensional diagrams for details.



### CANOPY B (CN2)

Canopy B - Drivers are in a remote box.



6"  
DIAMETER



13"  
DIAMETER





19"  
DIAMETER



TRIPLE™

