



T R I P L E



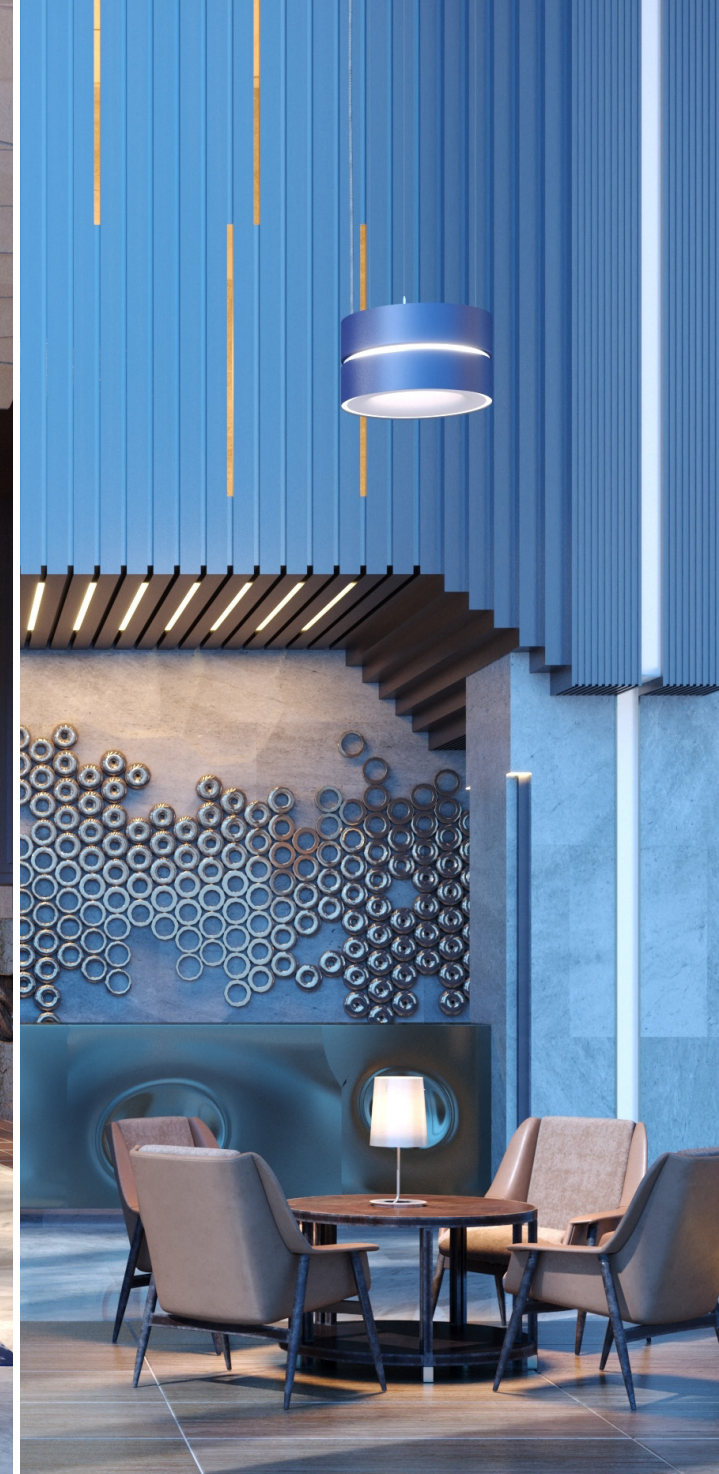
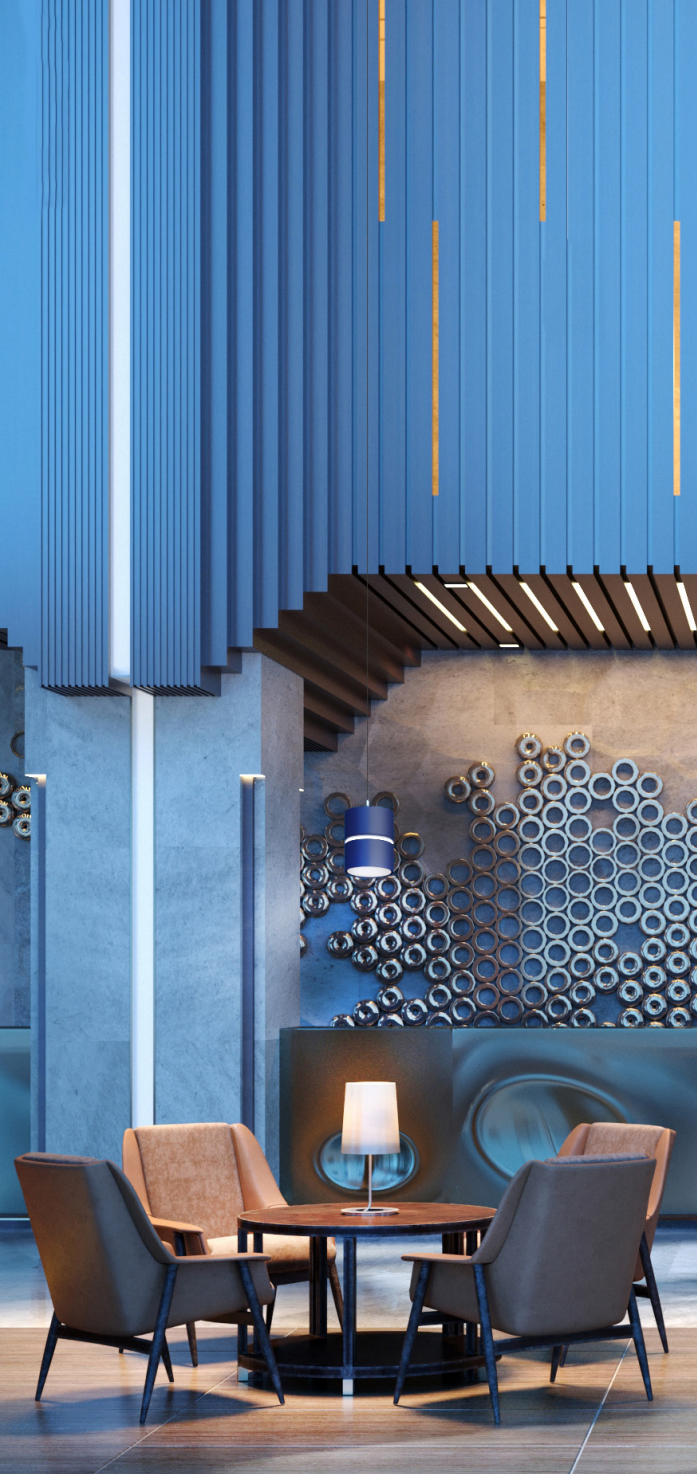
TRIPLE is a powerful but elegant pendant ideally suited for high performance applications. It's unique design brings both form and function to any space.



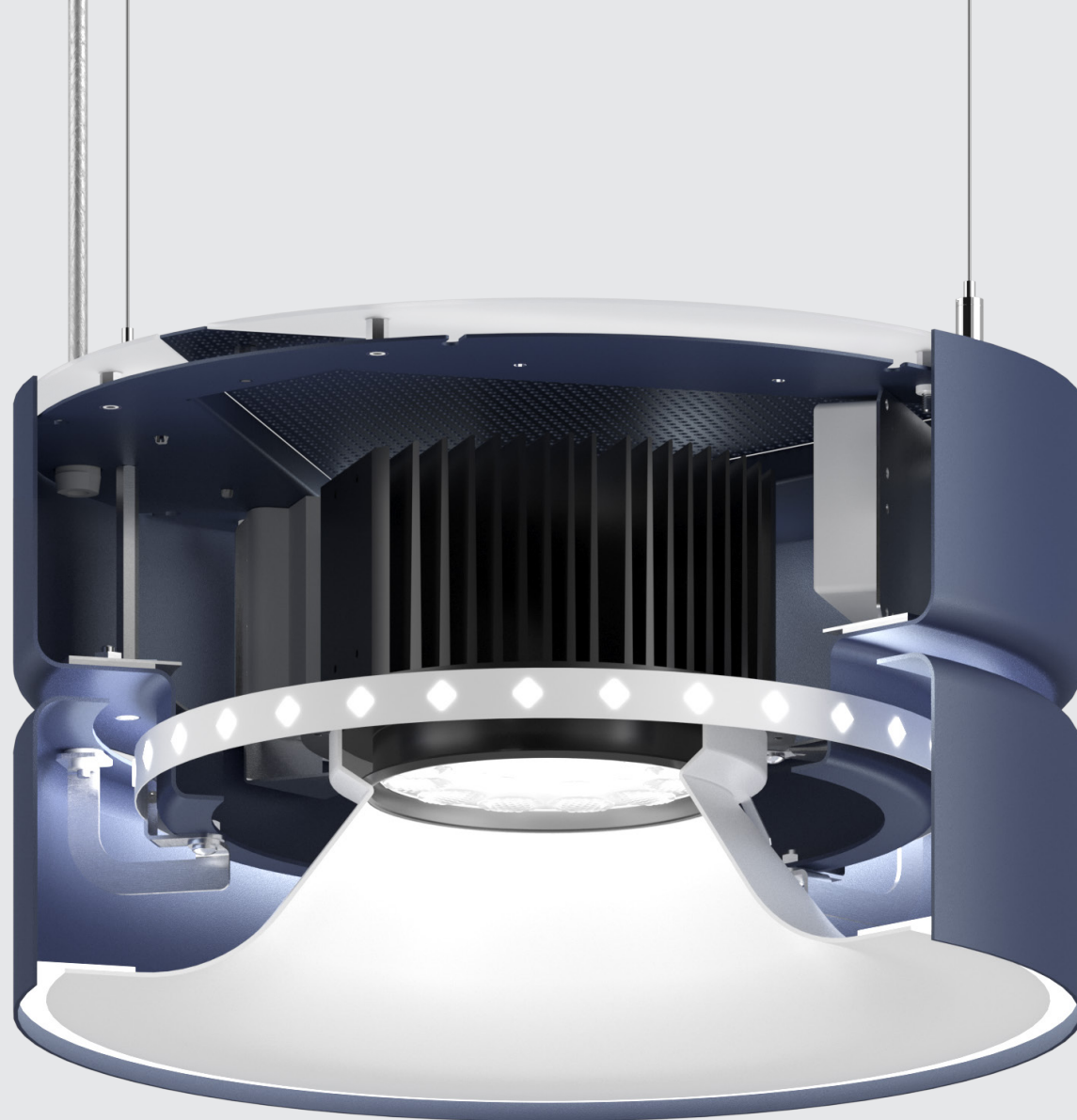
- **TRIPLE** is designed to facilitate the internal air flow to cool its components.
- The mid body gap, along with the gap between the funnel and the housing, plus concealed openings cleverly located on the fixture's top side, allow for air circulation.
- The performance of the fixture is evident when the upper and lower modules are on.
- With the unique design of the lower module, the glare is significantly reduced.
- The lower funnel creates a gradual transition between the bright centre and the darker outskirts making the fixture appear approachable despite its power. To accentuate this feature, the funnel can be finished in a contrasting color.



Three sizes - 6", 13" and 19"



Three sizes - 6", 13" and 19"



The uniqueness of **TRIPLE** is found in its multi-directional lighting system consisting of an upper module with indirect lighting, glow ring & lower funnel edge light, and direct illumination lower module. Triple features single, dual and triple circuit options.

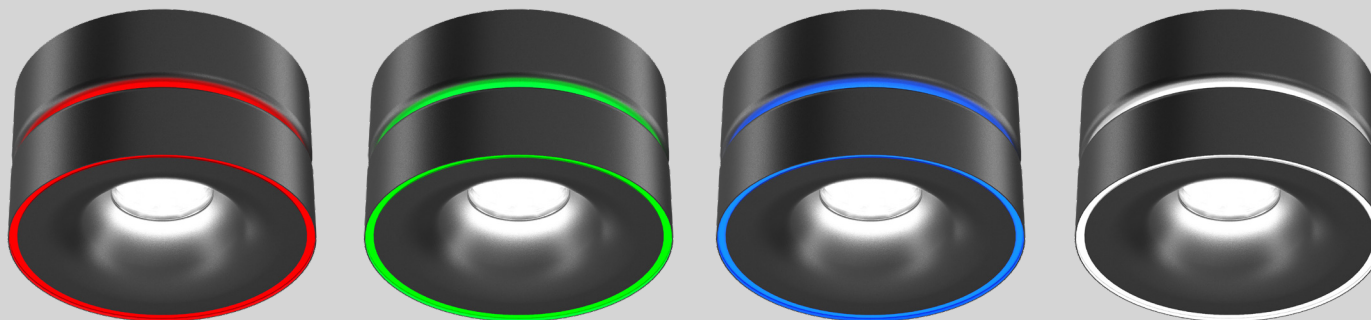
TRIPLE'S optional third circuit, which illuminates the mid-body (glow ring) and lower gap (glow around the funnel) offers a further sophistication to the fixture. This can provide a form of nocturnal illumination, highlighting the fixture's design.



For example, imagine walking past a retail window after closing time; if you look beyond the window display, you would see floating illuminated circles which would enhance the space's appeal.



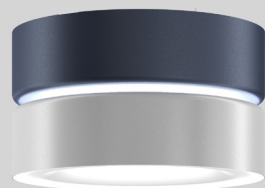
DIRECT beam angles: 15°, 30°, 50° & 70° and **INDIRECT**



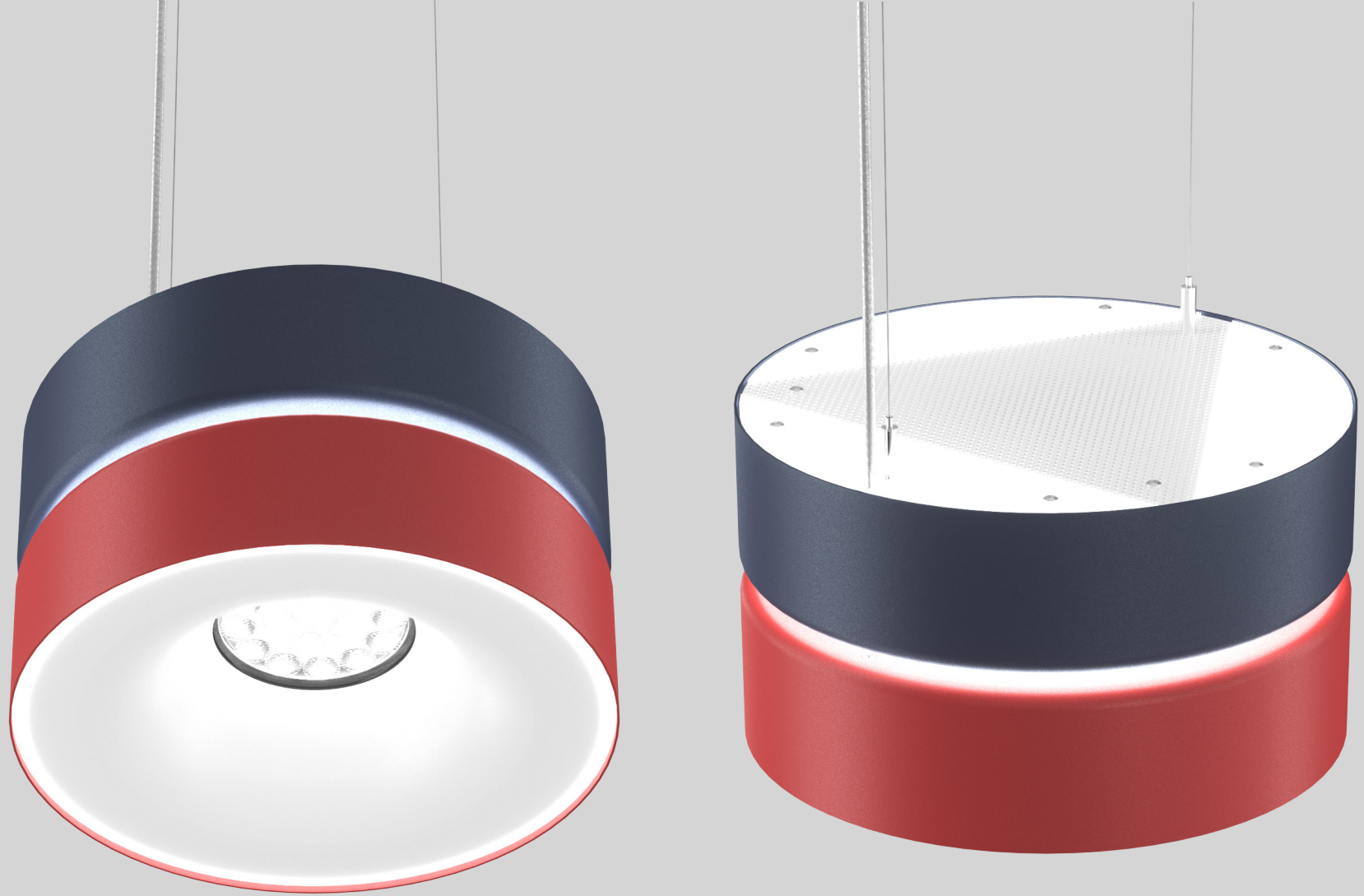
RGBW available with glow ring



SOLID finishes



MIX 'n' MATCH finishes



DIRECT and **INDIRECT** illuminated views of the fixture with glow ring in the center.



Specify **FUNNEL** finishes

Canopy options for **TRIPLE**



CANOPY A (CN1)

Canopy A - The drivers are integral within the fixture. This canopy is not available when ordering RGBW or 6" Direct/Indirect at 1400 lms direct.



CANOPY C (CN3)

Canopy C - The drivers are in a remote box and can be used with RGBW for both North America and Europe. This canopy also accommodates the 6" Direct/Indirect when 1400 lms is required.



CANOPY D (CN4)

Canopy D - This canopy is used for 240V only when RGBW is not required.



CANOPY B (CN2 - 6")



CANOPY B (CN2 - 13")



CANOPY B (CN2 - 19")

Canopy B - The drivers are in the canopy and this canopy will be used when ordering RGBW or 6" Direct/Indirect at 1400 lms direct.



6"

DIAMETER



13"
DIAMETER



19"
DIAMETER



T R I P L E