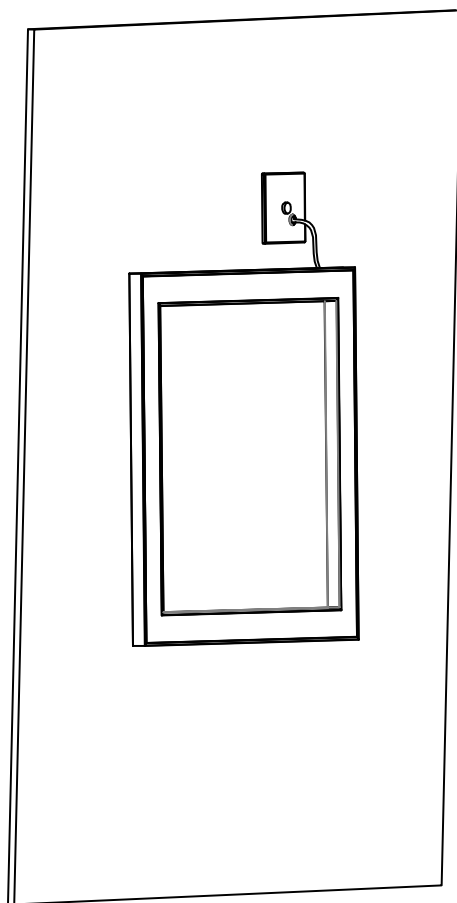




WEB PIN™ CODE: 531/640/560/639/510/520/566/511

- 1: These instructions may not cover all details or variations. For additional information contact Beta—calco.
- 2: Luminaires must be installed in accordance with national electrical code and local regulation.
- 3: Disconnect the power before installing the fixture or servicing.
- 4: Min 90°C supply conductors.



Junction box cover
(if required)
-same color as the fixture's
body unless specified.

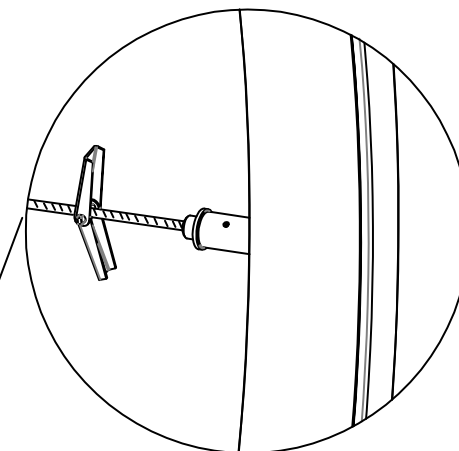
Finial

2ft LED power supply cord
(contains 2x18AWG stranded
in the same jacket)
long attached to the fixture's body.

Fixtures' body

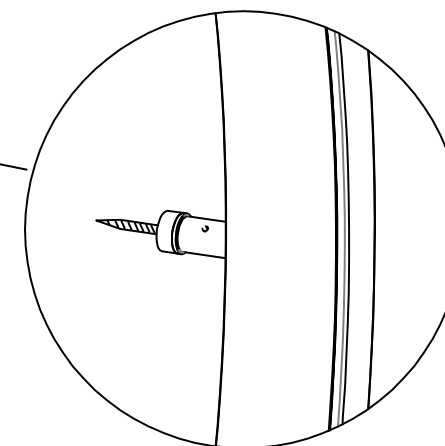
Mounting surface

The position of the junction box cover is for illustration only.
The fixture will be provided with 2ft of cord attached to the body.



SPRING WING TOGGLE MOUNTING

OR



SURFACE SCREW MOUNTING
MOUNTING

FIXTURES' DESCRIPTIONS:

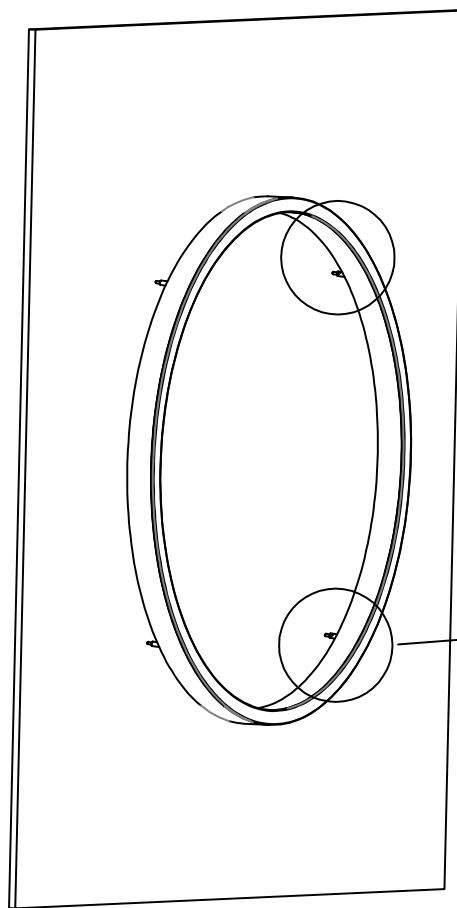
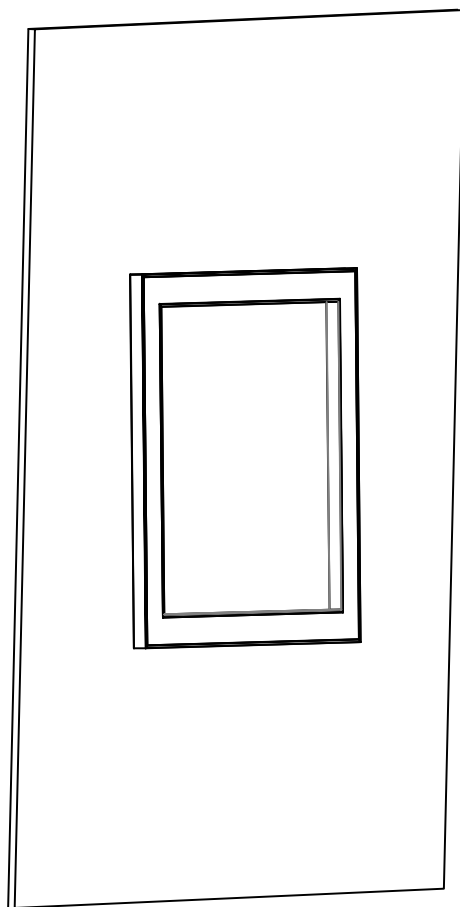
- MICRO QUAD/ QUAD WOOD DE SURFACE
- MICRO QUAD II/ QUAD II WOOD SURFACE
- MICRO RING DE SURFACE
- MICRO RING II SURFACE
- MICRO RING SE SURFACE
- MICRO RING



WEB PIN™ CODE: 511

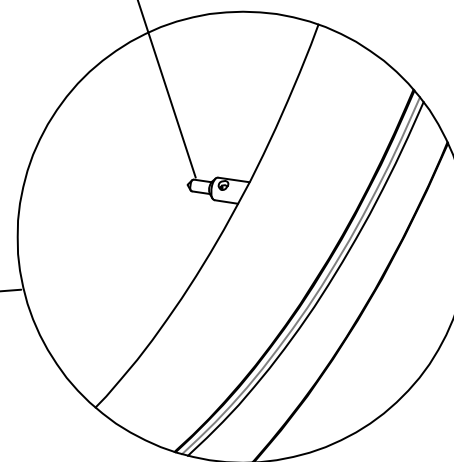
- 1: These instructions may not cover all details or variations. For additional information contact Beta-calco.
- 2: Luminaires must be installed in accordance with national electrical code and local regulation.
- 3: Disconnect the power before installing the fixture or servicing.
- 4: Min 90°C supply conductors.

SPRING WING TOGGLE MOUNTING STEPS

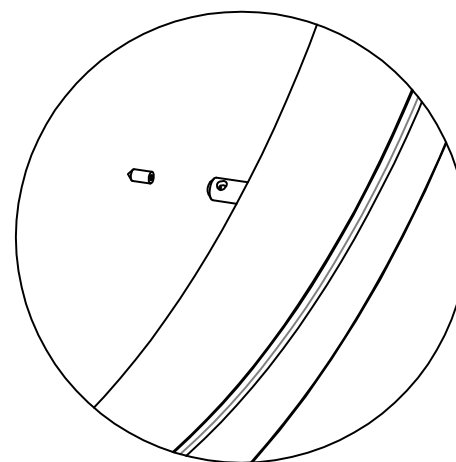


STEP 1
ESTABLISH THE FIXTURES'.

POINT SCREW
FOR MARKING



STEP 2
MARK THE MOUNTING HOLES
POSITIONS



STEP 3
REMOVE ALL THE MARKING
POINT SCREWS

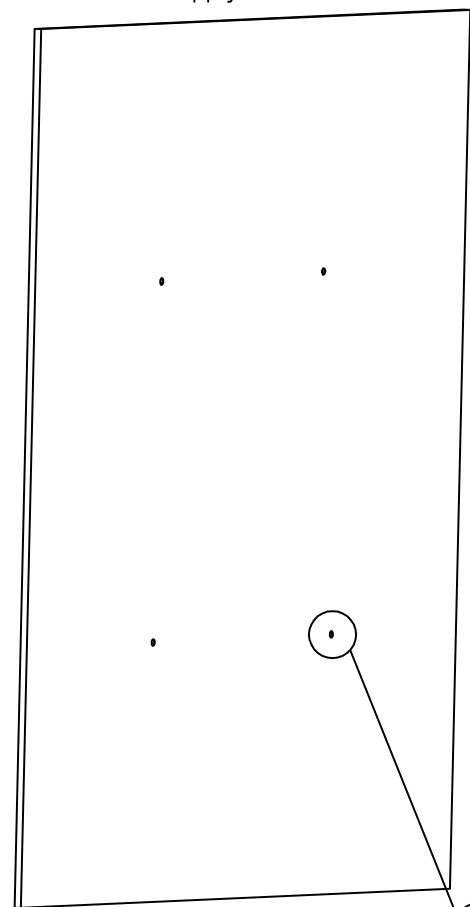
FIXTURES' DESCRIPTIONS:

- MICRO QUAD/ QUAD WOOD DE SURFACE
- MICRO QUAD II/ QUAD II WOOD SURFACE
- MICRO RING DE SURFACE
- MICRO RING II SURFACE
- MICRO RING SE SURFACE
- MICRO RING

WEB PIN™ CODE: 511

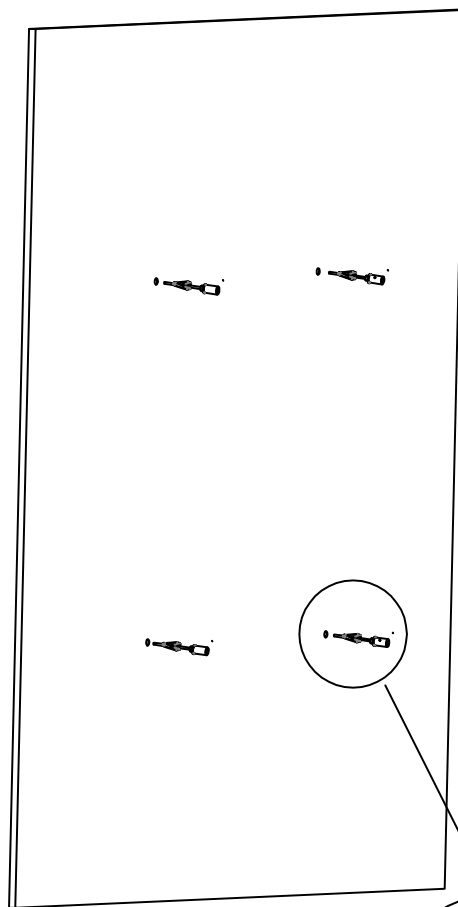
- 1: These instructions may not cover all details or variations. For additional information contact Beta-Calco.
- 2: Luminaires must be installed in accordance with national electrical code and local regulation.
- 3: Disconnect the power before installing the fixture or servicing.
- 4: Min 90°C supply conductors.

SPRING WING TOGGLE MOUNTING STEPS

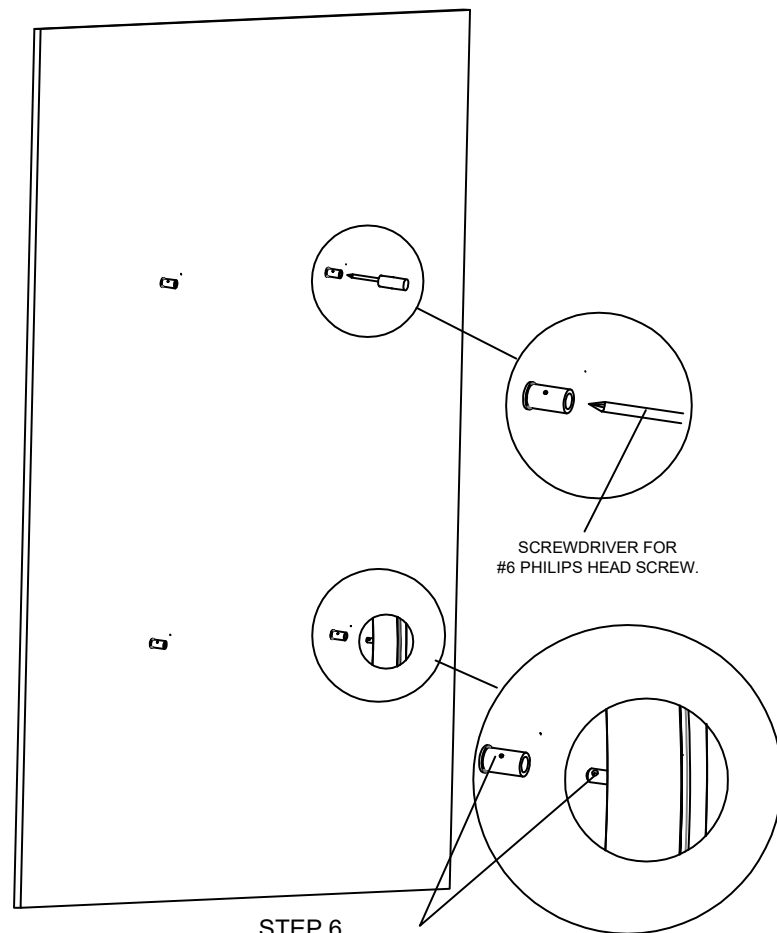


STEP 4
DRILL 3/8" HOLES

FIXTURE DESCRIPTIONS
 - MICRO QUAD/ QUAD WOOD DE SURFACE
 - MICRO QUAD II/ QUAD II WOOD SURFACE
 - MICRO RING DE SURFACE
 - MICRO RING II SURFACE
 - MICRO RING SE SURFACE
 - MICRO RING



STEP 5
SQUEEZE THE SPRINGS
AND INSERT THEM IN THE
SURFACE'S HOLES

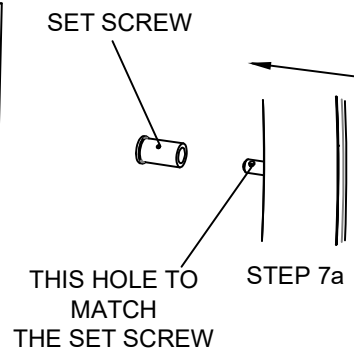
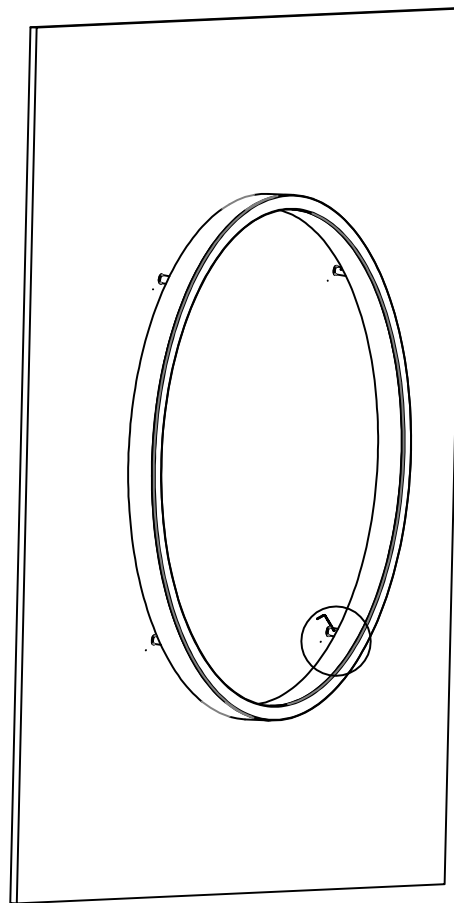
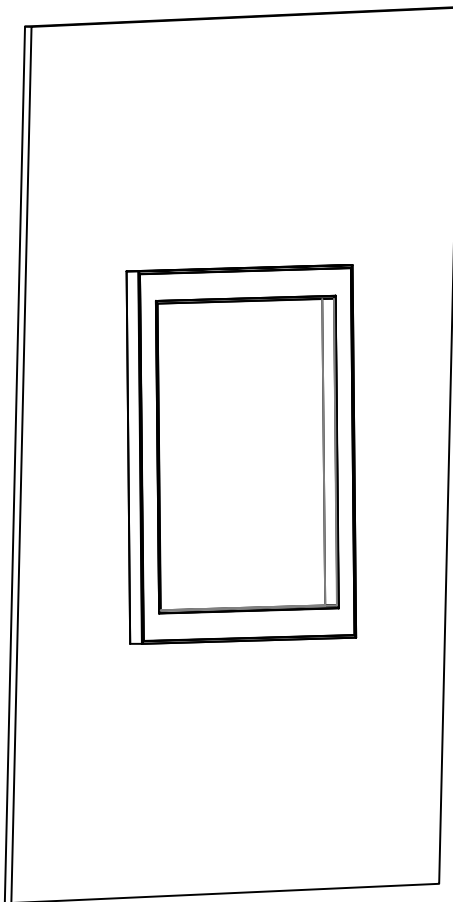


STEP 6
ALIGN THE HOLES ON THE
SURFACE BUSHINGS WITH
THE HOLES ON THE FIXTURES' BUSHINGS AND
TIGHTEN THE SURFACE BUSHING
USING A PHILIPS SCREWDRIVER

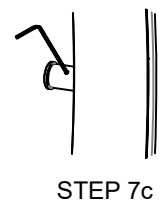
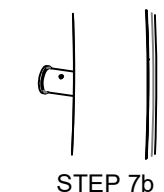
SCREWDRIVER FOR
#6 PHILIPS HEAD SCREW.

 **WEB PIN™ CODE: 511**

- 1: These instructions may not cover all details or variations. For additional information contact Beta-calco.
- 2: Luminaires must be installed in accordance with national electrical code and local regulation.
- 3: Disconnect the power before installing the fixture or servicing.
- 4: Min 90°C supply conductors.



SPRING WING TOGGLE MOUNTING STEPS



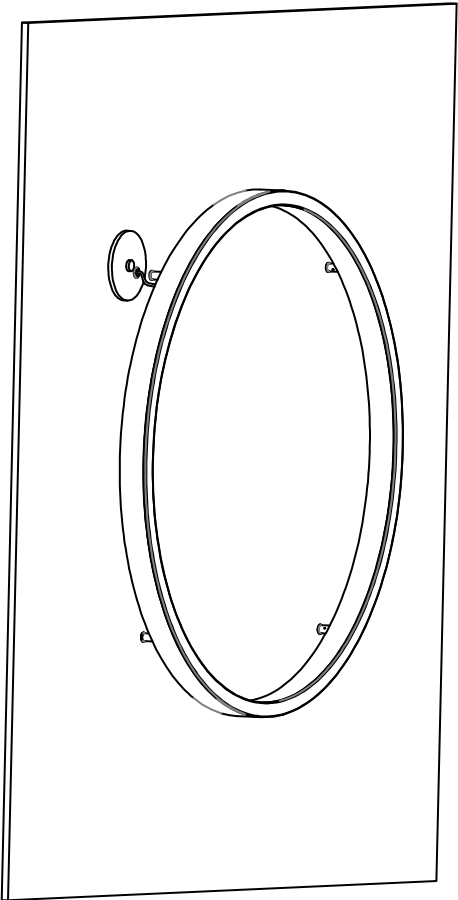
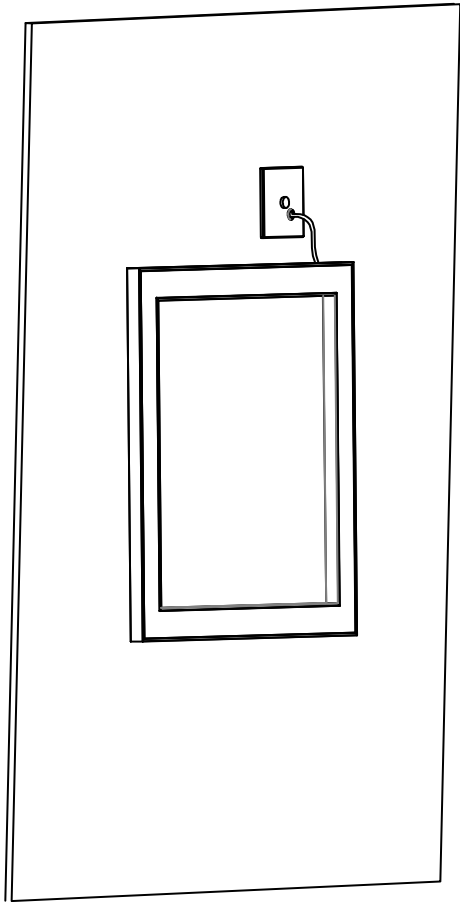
FIXTURES' DESCRIPTIONS:

- MICRO QUAD/ QUAD WOOD DE SURFACE
- MICRO QUAD II/ QUAD II WOOD SURFACE
- MICRO RING DE SURFACE
- MICRO RING II SURFACE
- MICRO RING SE SURFACE
- MICRO RING

STEP 7
MATCH THE 2 BUSHINGS' SIDE HOLES AND USING THE 0.05" HEXAGONAL KEY PROVIDED TIGHTEN THE SET SCREW TO SECURE THE FIXTURE. MAKE SURE THAT THE HEAD OF THE SET SCREW IS BELOW THE BUSHING SURFACE (STEP 7a,7b,7c)

 WEB PIN™ CODE: 511

- 1: These instructions may not cover all details or variations. For additional information contact Beta-calco.
- 2: Luminaires must be installed in accordance with national electrical code and local regulation.
- 3: Disconnect the power before installing the fixture or servicing.
- 4: Min 90°C supply conductors.



STEP 8
MAKE THE NECESSARY WIRING CONNECTIONS.

NOTE:
THE ADDITIONAL WIRES IN BETWEEN THE FIXTURE'S CORD
AND THE REMOTE DRIVER BOX ARE BY OTHERS.

FIXTURES' DESCRIPTIONS:
- MICRO QUAD/ QUAD WOOD DE SURFACE
- MICRO QUAD II/ QUAD II WOOD SURFACE
- MICRO RING DE SURFACE
- MICRO RING II SURFACE
- MICRO RING SE SURFACE
- MICRO RING

MAX DRIVER BOX REMOTE DISTANCE
FROM THE BODY OF THE FIXTURE

Remote wire size	18 AWG	16 AWG	14 AWG
Max. remote distance	40ft	60ft	90ft

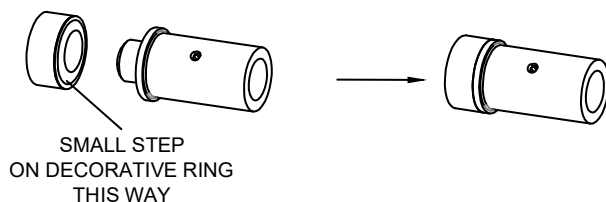




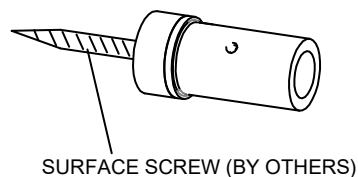
- 1: These instructions may not cover all details or variations. For additional information contact Beta-calco.
- 2: Luminaires must be installed in accordance with national electrical code and local regulation.
- 3: Disconnect the power before installing the fixture or servicing.
- 4: Min 90°C supply conductors.

SURFACE SCREW MOUNTING STEPS

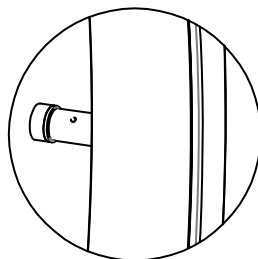
1. FOLLOW THE STEPS 1,2 AND 3
2. INSERT THE SURFACE BUSHINGS IN THE DECORATIVE RINGS AS SHOWN BELOW .



3. ATTACH THE SURFACE BUSHING TO THE SURFACE. USE THE APPROPRIATE SCREW (BY OTHERS) ACCORDING TO THE SURFACE MATERIAL. THE SURFACE BUSHING CAN FIT A #8 SCREW.



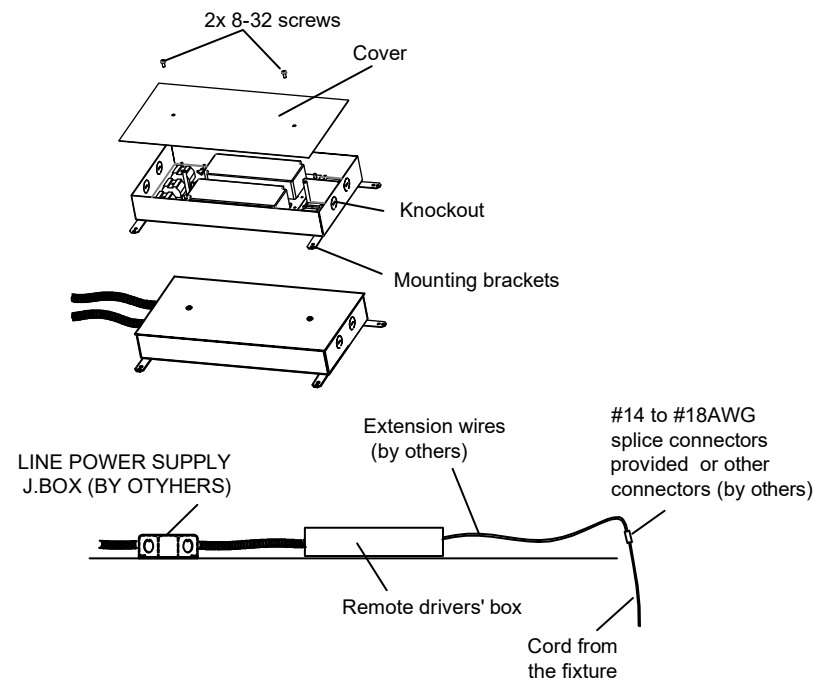
4. FOLLOW THE STEPS 7 AND 8.



FIXTURES' DESCRIPTIONS:

- MICRO QUAD/ QUAD WOOD DE SURFACE
- MICRO QUAD II/ QUAD II WOOD SURFACE
- MICRO RING DE SURFACE
- MICRO RING II SURFACE
- MICRO RING SE SURFACE
- MICRO RING

REMOTE DRIVERS' BOX



1. Remove the 2x 8-32 screws and the drivers' box cover.
 2. Remove the necessary Knockouts.
 3. Attach the conduits (not provided).
 4. Make the wiring connections.
 5. Install the cover using the previously removed screws.
- Use the mounting brackets to secure the box in place.