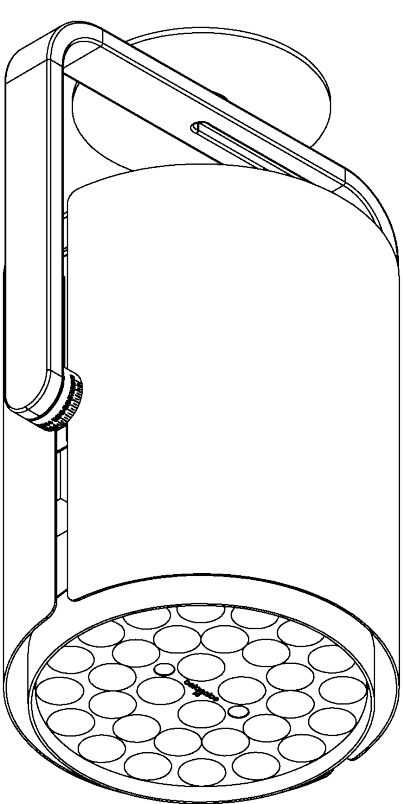
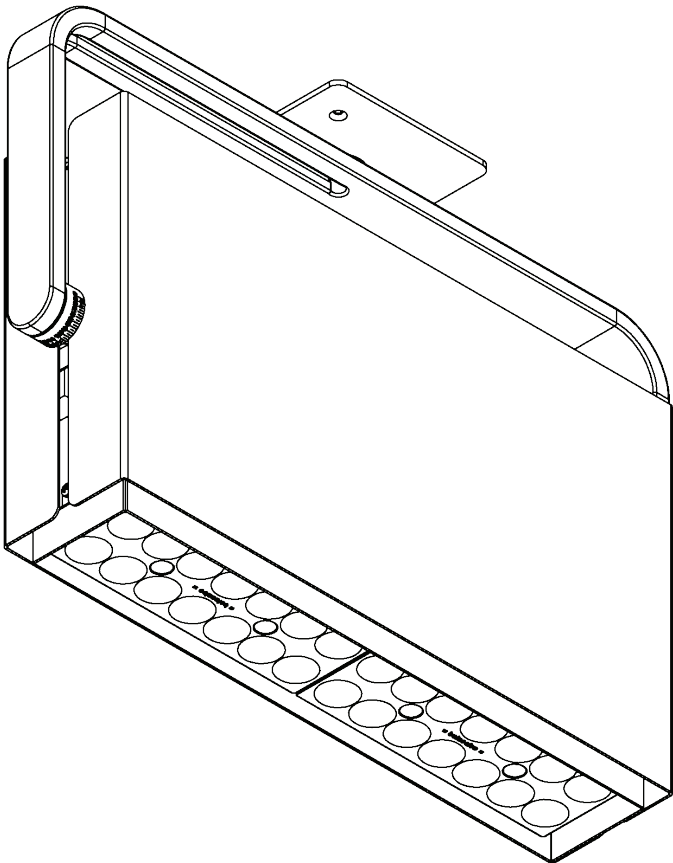


- 1: These instructions may not cover all details or variations. For additional information contact Beta-calco.
- 2: Luminaires must be installed in accordance with national electrical code and local regulation.
- 3: Disconnect the power before installing the fixture or servicing.
- 4: Min 90°C supply conductors.



MATREX ROUND SURFACE SINGLE



MATREX SURFACE SINGLE

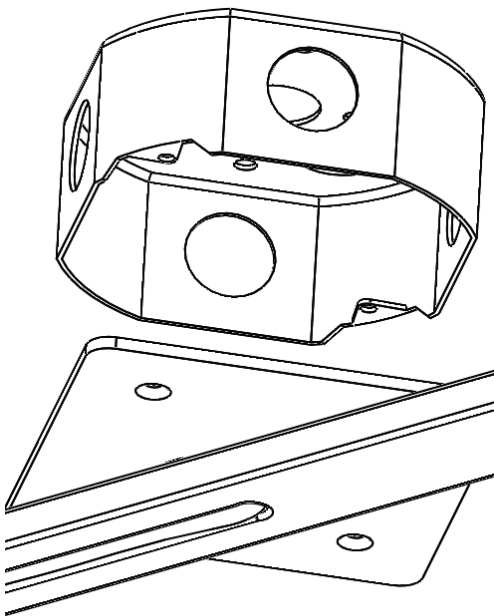


Fig. 1

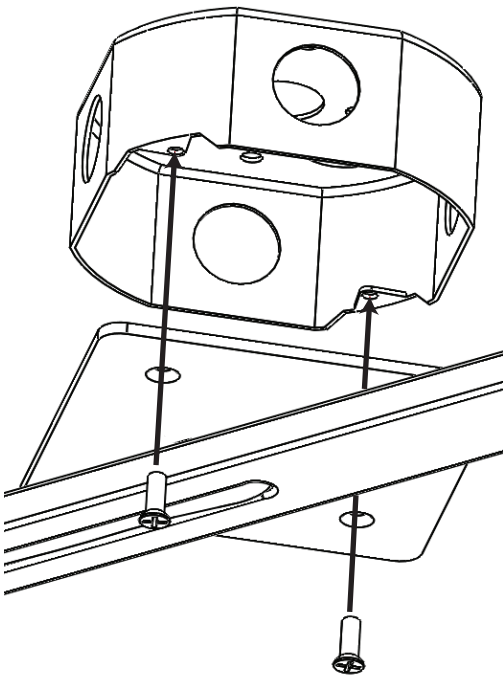


Fig. 2

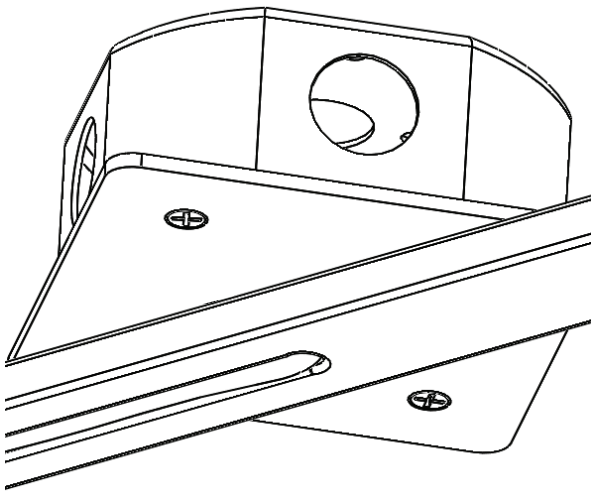


Fig. 3

- 1. Make all the necessary electrical connections see Fig. 1.
- 2. Attach the mounting plate to the junction box using counter sunk screws - see Fig. 2 and Fig. 3.

NOTE: USE COTTON GLOVES WHEN INSTALLING OR HANDLING FIXTURES WITH PLATED FINISH OR GLASS/FAUX GLASS DECORATIVE COMPONENTS

FIXTURE DESCRIPTION: MATREX SURFACE SINGLE

