

FIXTURE COMES PARTIALLY ASSEMBLED.



PLEASE ENSURE ELECTRICAL CIRCUIT IS DISCONNECTED BEFORE INSTALLATION.



NEVER TOUCH THE YELLOW PORTION OF THE LED CHIP OR DAMAGE MAY OCCUR.

Stand alone / non-continuous installation

1: Refer to "Aircraft Cable Suspension" installation instruction sheet and make all appropriate ceiling and wiring connections. Suspend and level the luminaire. Trim excess aircraft cable.

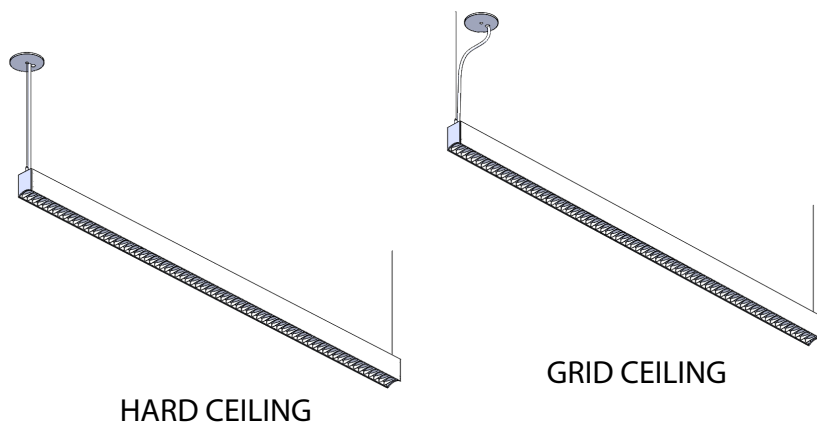


FIG 1

Continuous installation

1: Begin with fixture segment that has power drop.

2: Refer to "Aircraft Cable Suspension" installation instruction sheet and make all appropriate ceiling and wiring connections. Suspend and level the luminaire. DO NOT trim excess aircraft cable until entire fixture installation is complete.

3: Remove single screw and store for later use, slide suspension plate away from the end of the fixture. (See FIG 3 & 4)

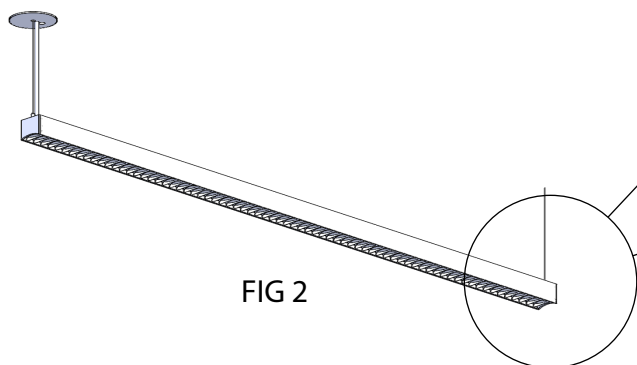


FIG 2

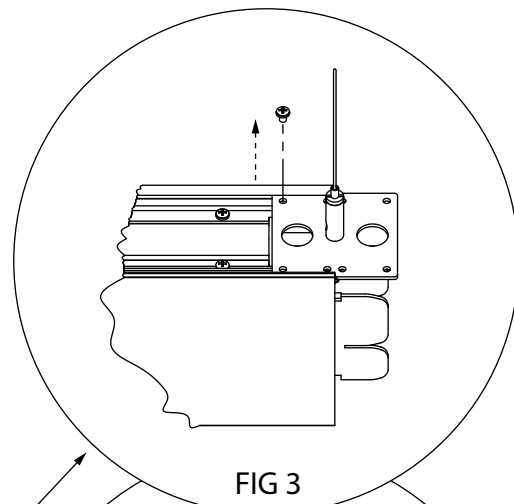


FIG 3

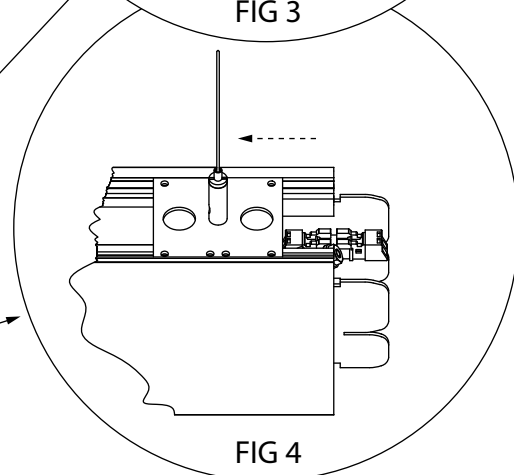
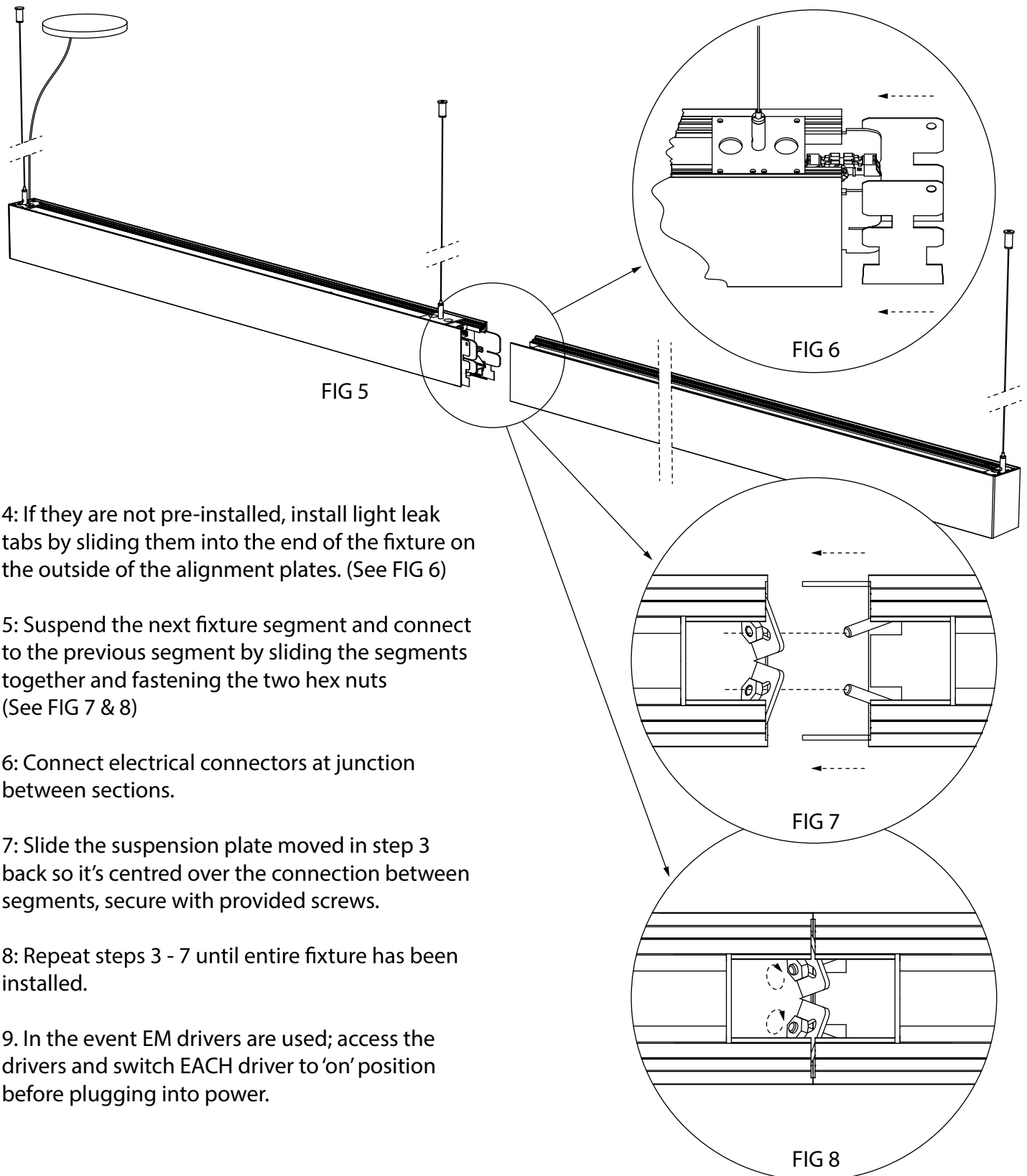


FIG 4



4: If they are not pre-installed, install light leak tabs by sliding them into the end of the fixture on the outside of the alignment plates. (See FIG 6)

5: Suspend the next fixture segment and connect to the previous segment by sliding the segments together and fastening the two hex nuts (See FIG 7 & 8)

6: Connect electrical connectors at junction between sections.

7: Slide the suspension plate moved in step 3 back so it's centred over the connection between segments, secure with provided screws.

8: Repeat steps 3 - 7 until entire fixture has been installed.

9. In the event EM drivers are used; access the drivers and switch EACH driver to 'on' position before plugging into power.