

Fixture comes partially assembled.

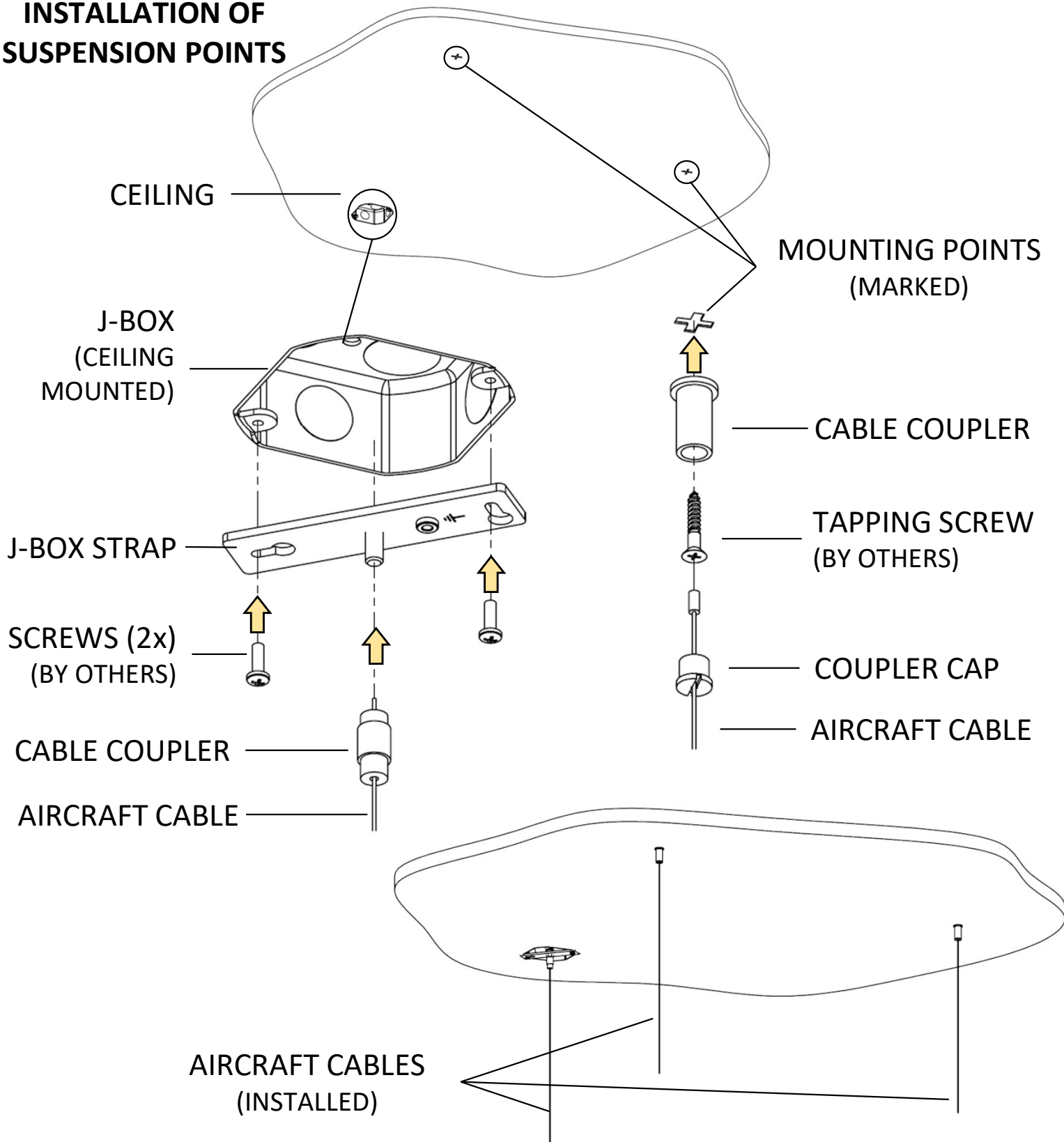


Ensure electrical circuit is disconnected before installation.



Luminaires must be installed in accordance with national electrical code and local regulation.

## INSTALLATION OF SUSPENSION POINTS





Ensure electrical circuit is disconnected before installation.

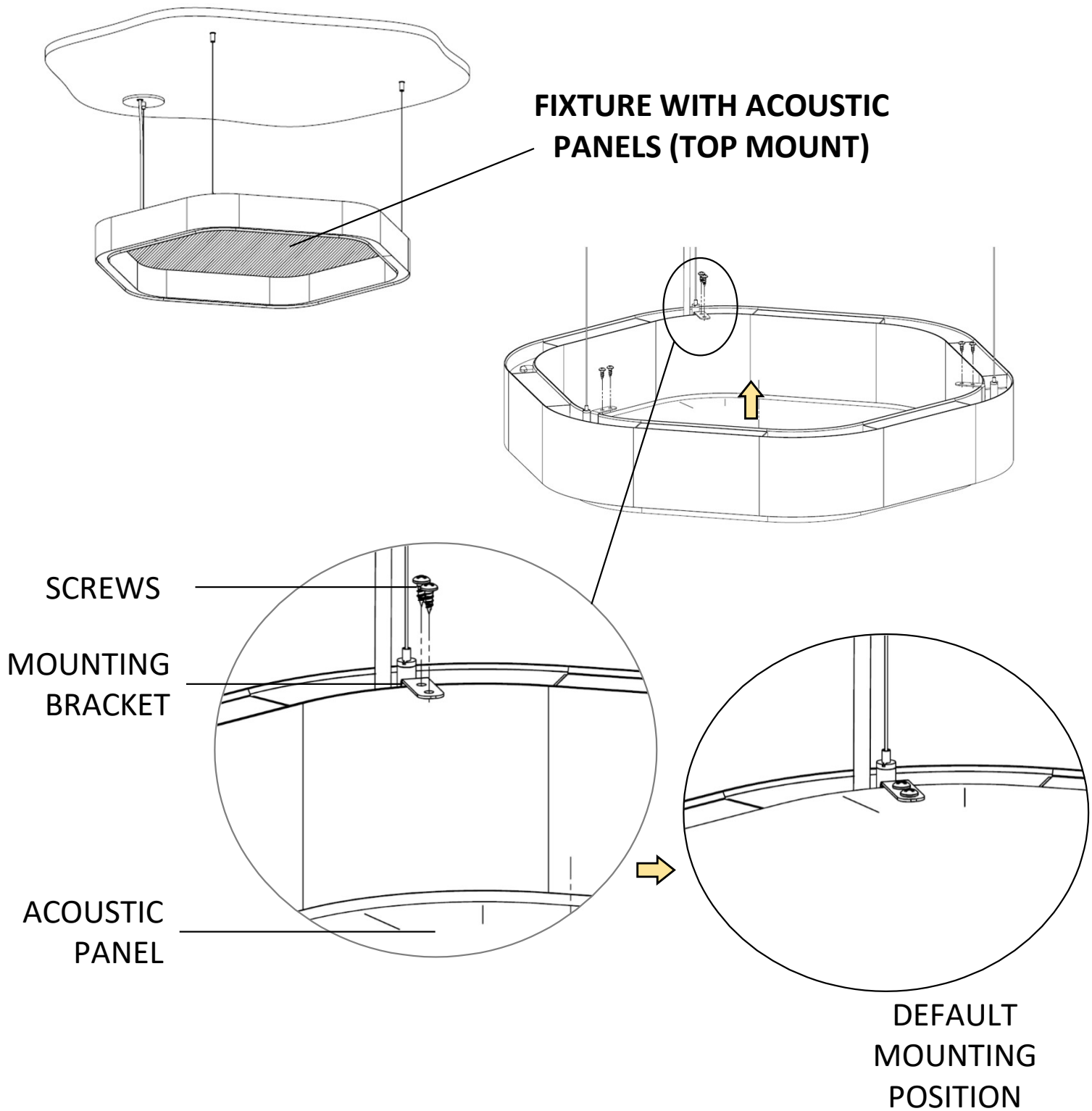
## MAKE WIRING CONNECTIONS

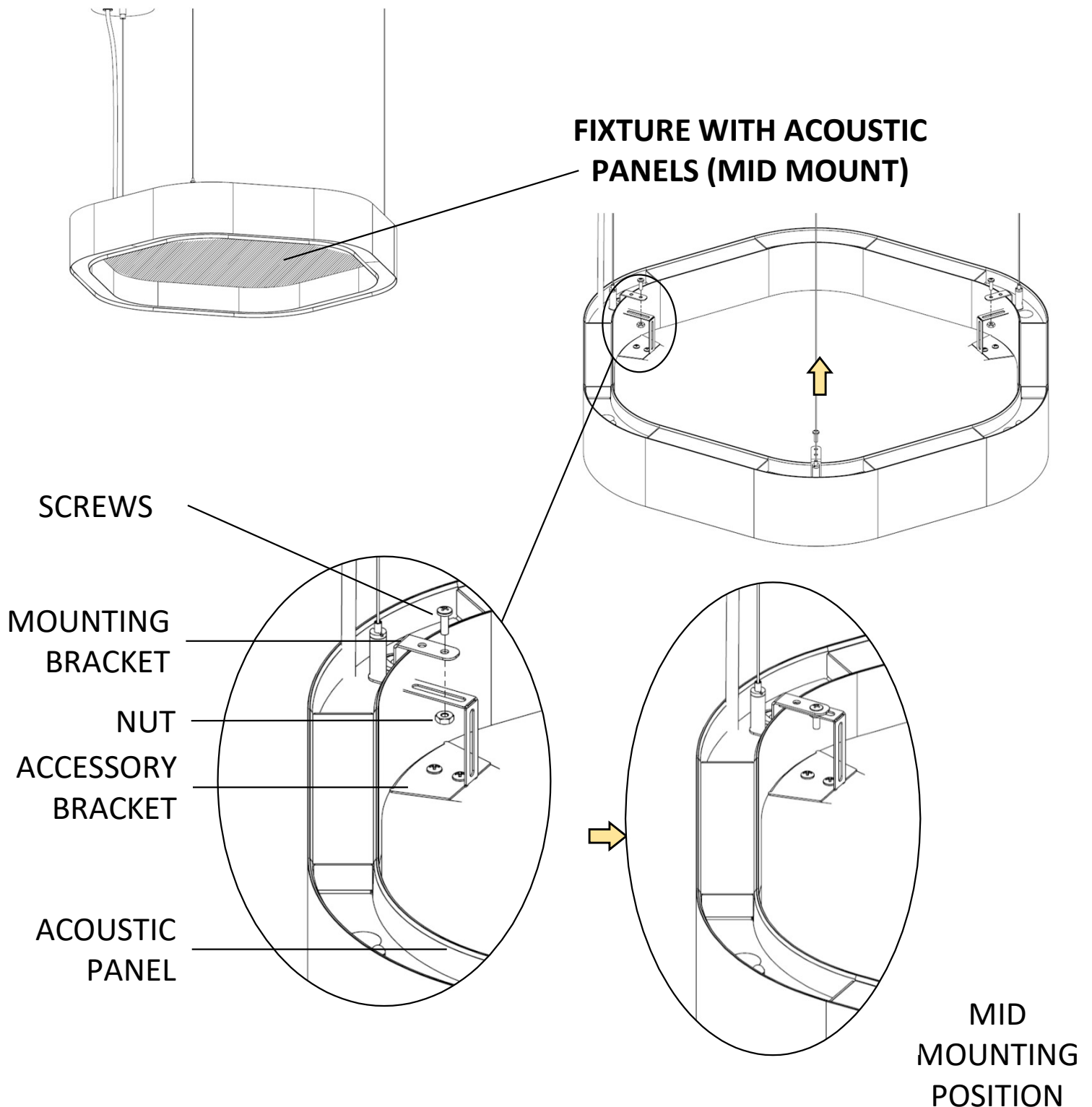
CANOPY COVER  
(WITH GROMMET)

SLIP RING  
(USE TO SECURE  
CANOPY COVER)

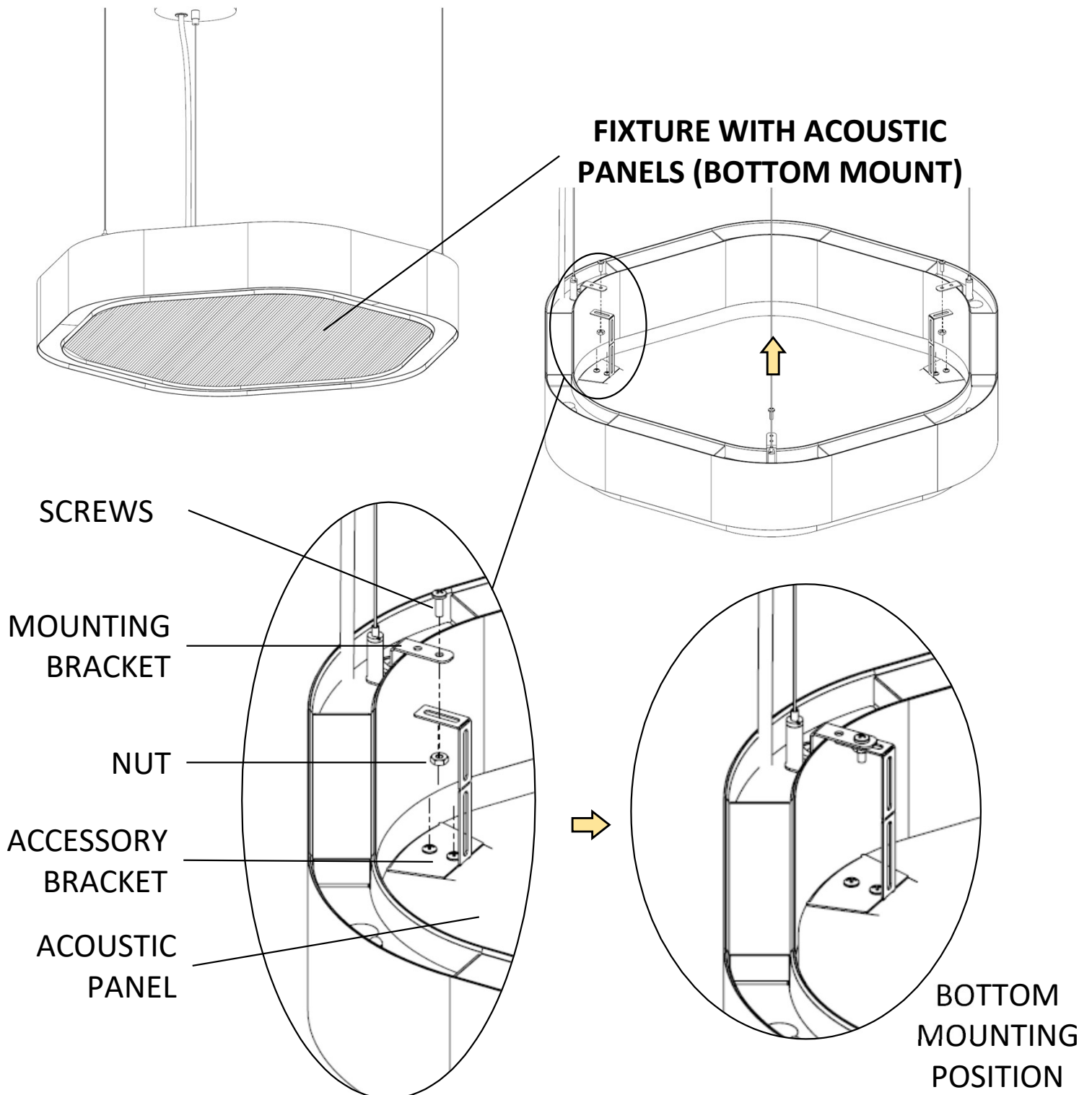
  
**CABLE GLIDER**  
INSERT AIRCRAFT CABLES  
INTO THE GLIDER WITH  
1-INCH MIN. SAFETY  
LENGTH

LEVEL THE FIXTURE BY PRESSING DOWN  
ON THE TIP OF THE CABLE GLIDER. IF  
DESIRED, CLIP EXCESS AIRCRAFT  
CABLES AFTER THE FIXTURE IS LEVELED.

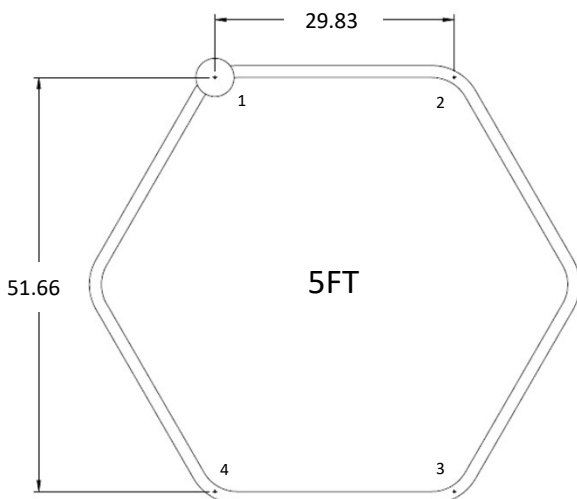
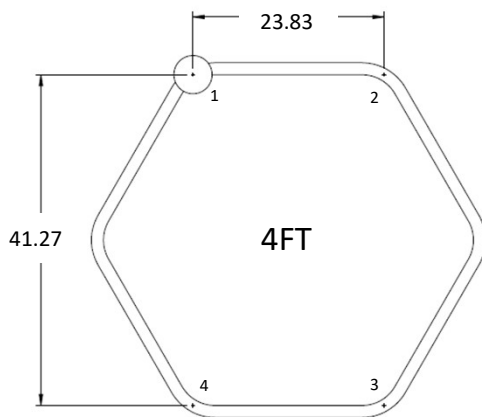
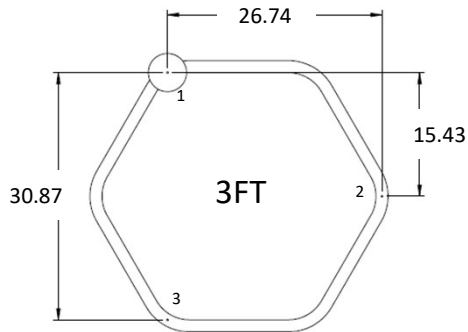
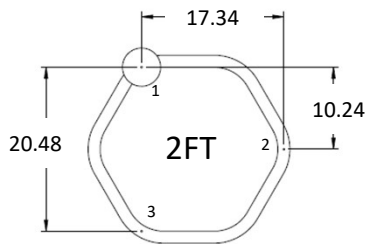




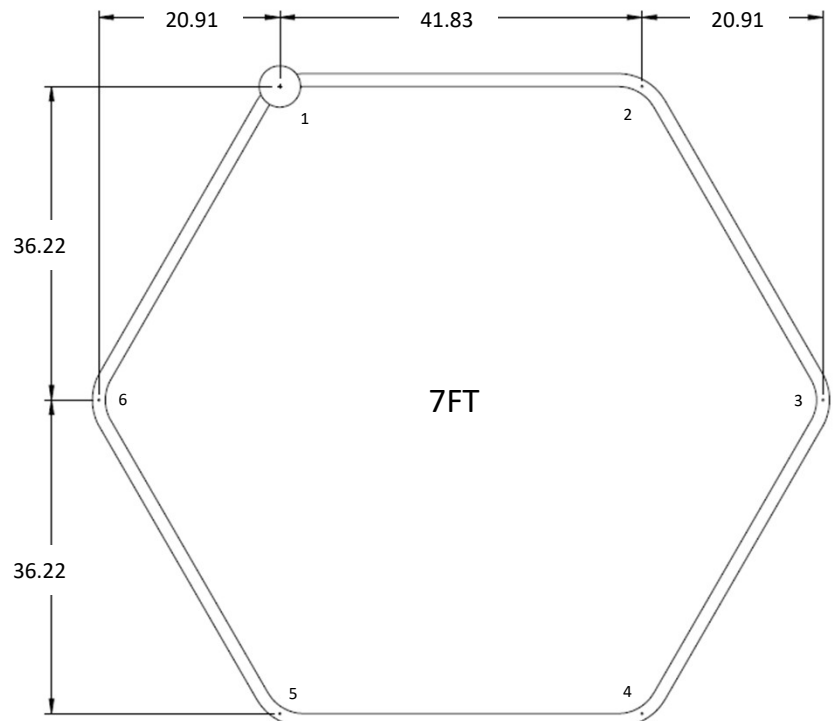
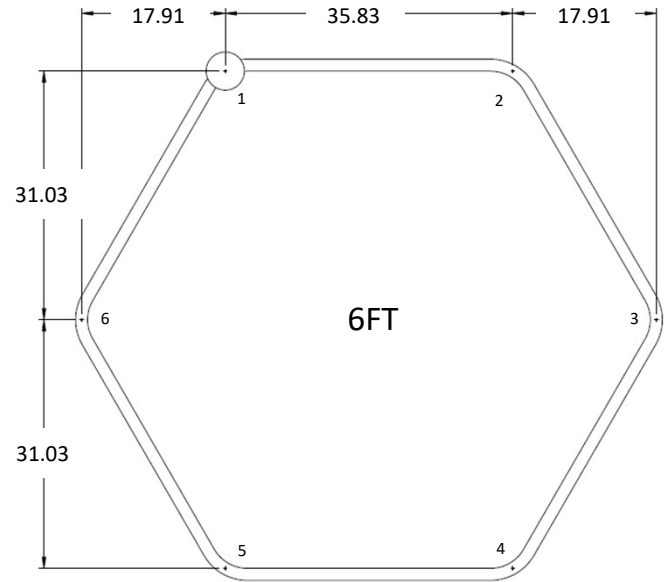
Note: Refer to last page for supplementary instruction on how to handle the accessory bracket and acoustic panels for MID and BOTTOM mounting.



Note: Refer to last page for supplementary instruction on how to handle the accessory bracket and acoustic panels for MID and BOTTOM mounting.



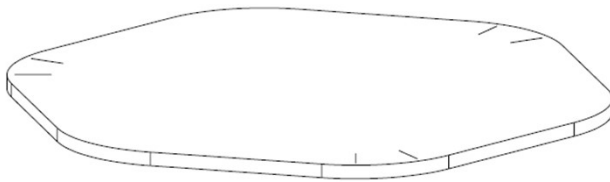
## SUSPENSION POINTS LAYOUT (TOP VIEW)



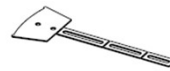


## SUPPLEMENTARY INSTRUCTION

(PREPARING THE ACOUSTIC PANEL ASSEMBLY)



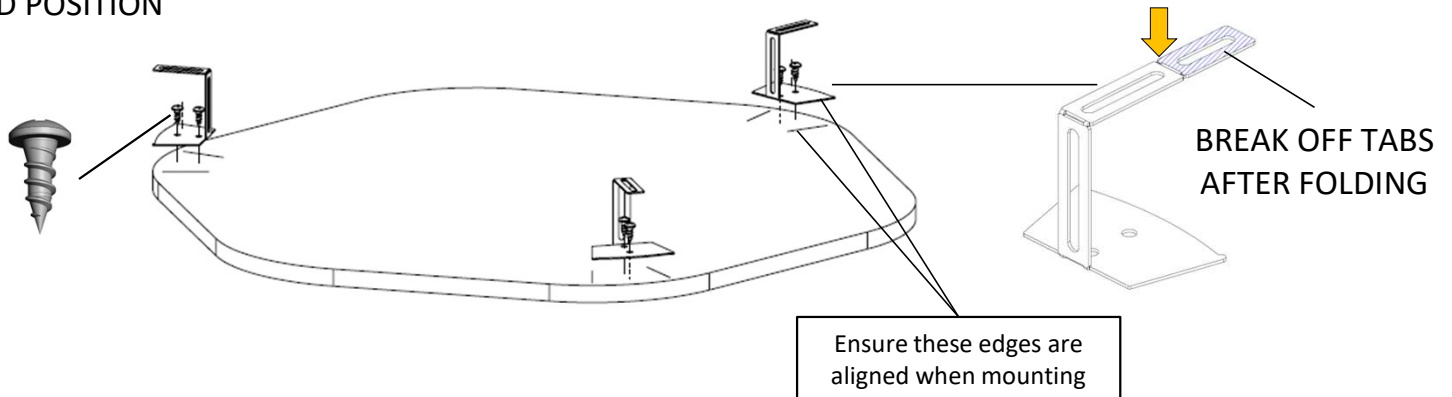
ACOUSTIC PANEL



ACCESSORY  
BRACKET

Together with other mounting accessories, Acoustic panel and accessory brackets will be delivered in this forms

### MID POSITION



### BOTTOM POSITION

