

- 1: These instructions may not cover all details or variations. For additional information contact Beta-calco.
- 2: Luminaires must be installed in accordance with national electrical code and local regulation.
- 3: Disconnect the power before installing the fixture or servicing.
- 4: Min 90°C supply conductors.

Fixture comes partially assembled



PLEASE ENSURE ELECTRICAL CIRCUIT IS DISCONNECTED BEFORE INSTALLATION



NEVER TOUCH THE YELLOW PORTION OF THE LED CHIP OR DAMAGE MAY OCCUR

INSTALLATION STEPS:

1. Mount the couplers to the ceiling using appropriate fasteners (not included) according to the structure of the ceiling (Fig. 1 and Table 1).

PLEASE ENSURE THAT THE FASTENERS ARE INSTALLED ON THE STUD/JOIST OR ANY SUPPORTING STRUCTURE OF THE CEILING. THIS LUMINAIRE MUST BE MOUNTED OR SUPPORTED INDEPENDENTLY FROM AN OUTLET BOX.

2. Pass the aircraft cables through the caps (Fig. 2).
3. Fasten the caps to the couplers.
4. Lift the fixture and attach the loose ends of the 4 or 6 aircraft cables to the cable gliders (Fig. 3).
5. Make appropriate wiring connections and attach the canopy to the junction box using the bracket / nipple / finial assembly provided (Fig. 4).
6. Level the fixture using the cable gliders.
7. Insert diffusers textured side down by slightly twisting and lifting into place (Fig. 4).

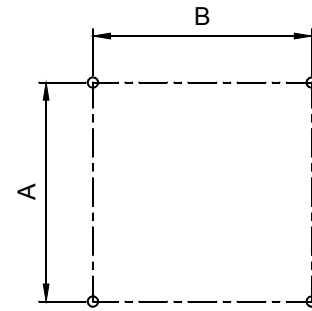


Fig. 1

Table 1

	A in	B in
24 SQ	20	20
36 SQ	32.5	32.5
48 SQ	44	44
60 SQ	56	56
72 SQ	68	68
84 SQ	80	80
24 x 48	20	44
36 x 72	32.5	68

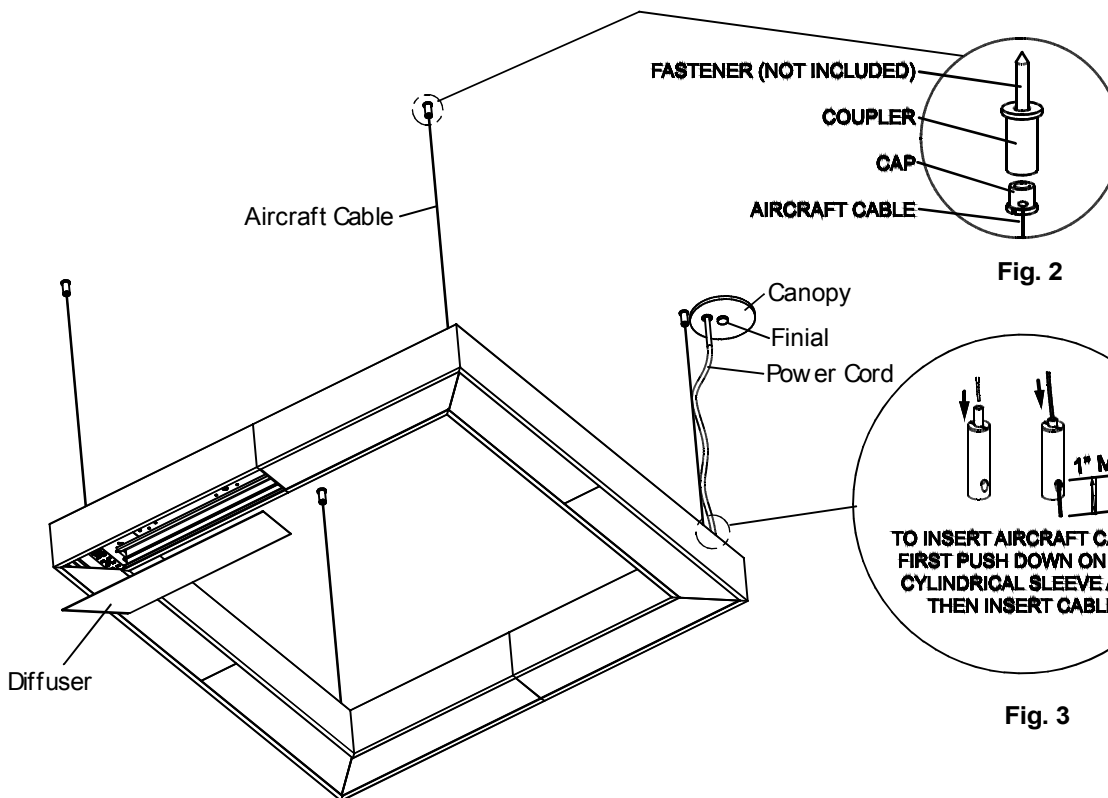


Fig. 4
(36 SQ shown)

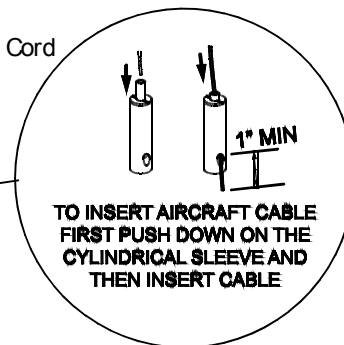


Fig. 3

- 1: These instructions may not cover all details or variations. For additional information contact Beta-calco.
- 2: Luminaires must be installed in accordance with national electrical code and local regulation.
- 3: Disconnect the power before installing the fixture or servicing.
- 4: Min 90°C supply conductors.

- Fixture comes partially assembled
- PLEASE ENSURE ELECTRICAL CIRCUIT IS DISCONNECTED BEFORE INSTALLATION
- NEVER TOUCH THE YELLOW PORTION OF THE LED CHIP OR DAMAGE MAY OCCUR

INSTALLATION STEPS :

1. Mount the couplers to the ceiling using appropriate fasteners (not included) according to the structure of the ceiling (Fig. 1, Fig. 2 and Table 1).

PLEASE ENSURE THAT THE FASTENERS ARE INSTALLED ON THE STUD/JOIST OR ANY SUPPORTING STRUCTURE OF THE CEILING. THIS LUMINAIRE MUST BE MOUNTED OR SUPPORTED INDEPENDENTLY FROM AN OUTLET BOX.

2. Pass the aircraft cables through the caps (Fig. 2).
3. Fasten the caps to the couplers.
4. Remove fixture top covers.
5. Assemble fixture on the floor. See separate "Ring-Squiggle-Macro Connection Instructions" for connection fixture sections together.
6. Lift the fixture and attach the loose ends of the 6 or 8 aircraft cables to the cable gliders (Fig. 3).
7. Fixture can also be suspended to the ceiling section by section.
8. Make appropriate wiring connections and attach the canopy to the junction box using the bracket / nipple / finial assembly provided (Fig. 4).
9. Re-install top covers.
10. Level the fixture using the cable gliders.
11. Insert diffusers textured side down by slightly twisting and lifting into place (Fig. 5).

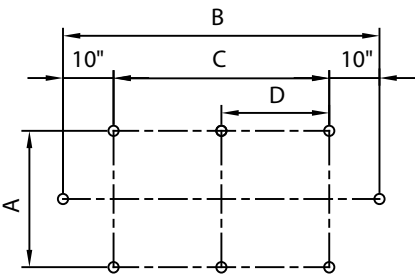


Fig. 1

Table 1	A in	B in	C in	D in	Suspension	Section
48x96	43.5	92	72	-	6	4
60x120	56.75	114.5	94.5	47.25	8	4
72x144	68	140	94.5	47.25	8	4

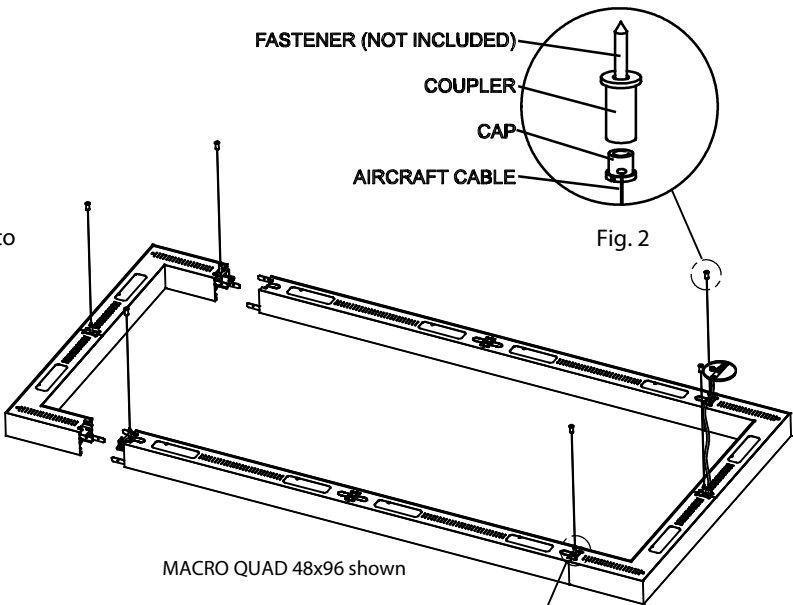


Fig. 2

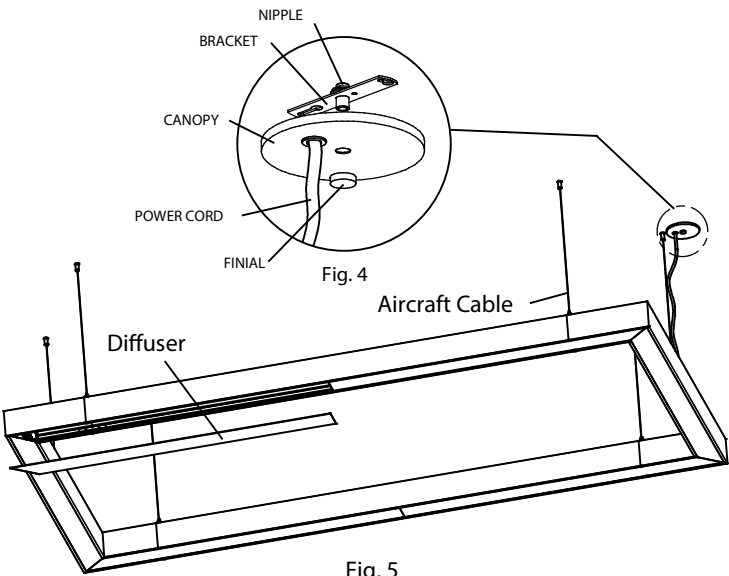


Fig. 5

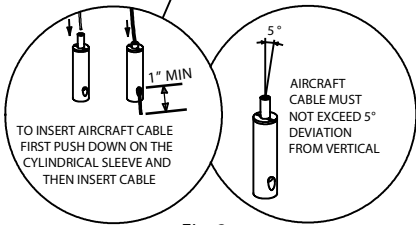


Fig. 3