

1 IMPORTANT NOTE

Fixture comes partially assembled.

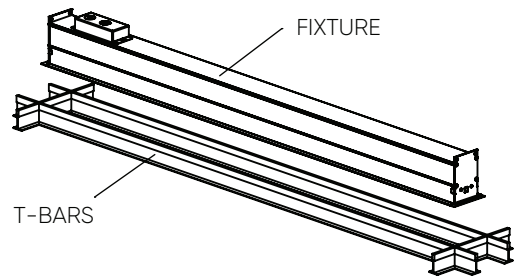
⚠ Ensure electrical circuit is disconnected before installation.

⚡ Luminaires must be installed in accordance with National electrical code and local regulation.

2 STANDALONE INSTALLATION

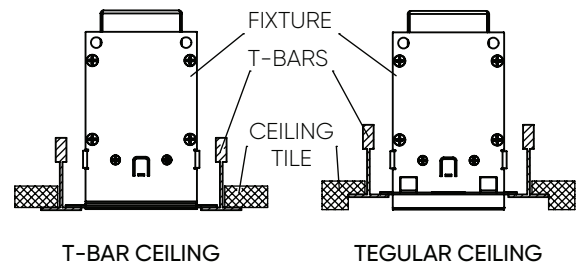
STEP 1

Remove the ceiling tiles where the fixture will be installed, as well as the adjacent tiles for easy access during installation.



STEP 2

Raised the fixture above the ceiling and lower it onto the T-bars.

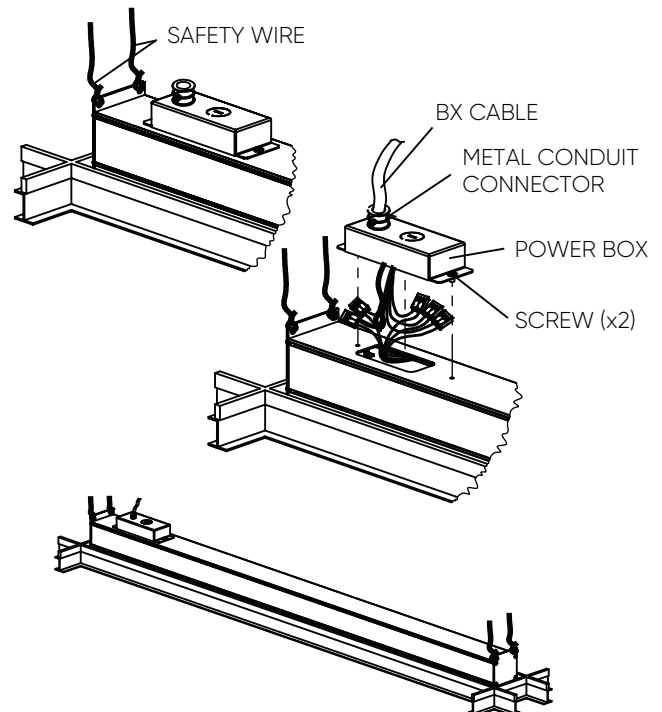


STEP 3

Attach safety wires to the fixture.

STEP 4

Remove the power box from the top of the fixture. Install BX cable (by others) through the metal conduit connector (by others) and install onto the power box. Make electrical connections between wires of BX cable and fixture wires according to the wires labeling. Place the connected wires inside the power box. Reinstall the power box to the fixture.



STEP 5

The power can safely be turned on now.

3 CONTINUOUS INSTALLATION

STEP 6

Start with the first section containing the power box. Repeat steps 1-4.

STEP 7

Raise the next section above the ceiling and lower it onto the T-bars.

STEP 8

Make the wiring connection between both sections.

STEP 9

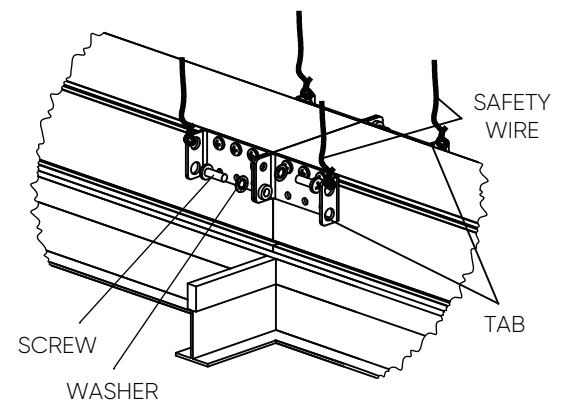
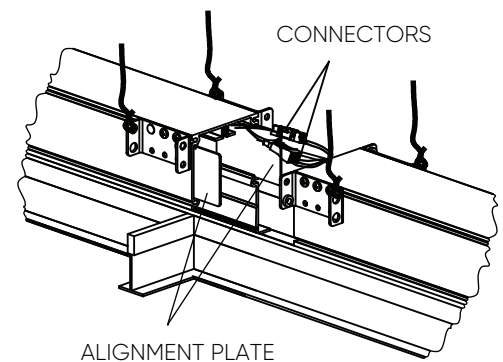
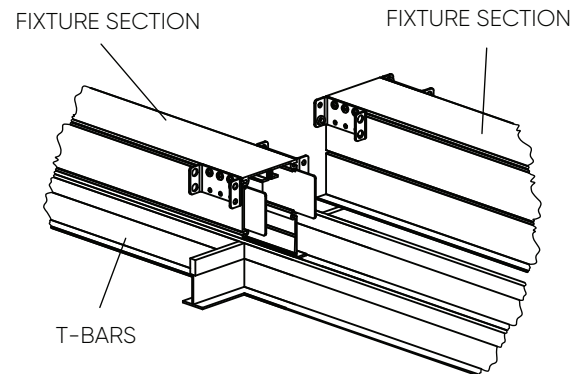
Join both sections together by sliding the section into the alignment plates (x2) on the installed section and fastening screws and washers.

STEP 10

Attach safety wires to the section tabs.

STEP 11

When all sections of the fixture are installed, the power can safely be turned on.



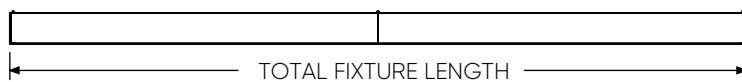
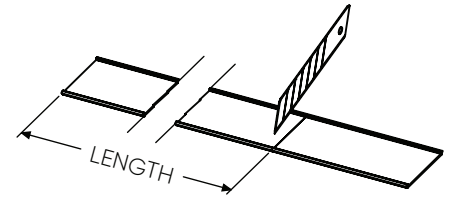
4 CONTINUOUS SEAMLESS DIFFUSER INSTALLATION

STEP 1

Measure entire fixture length from start end cap to the last end cap.
The desired seamless diffuser length can be between 0.27" to 1.17" shorter than fixture length.

STEP 2

Make a straight incision mark on the seamless diffuser using a box knife or cutting tool.



STEP 3

Snap at incision mark and install seamless diffuser.

