

1 IMPORTANT NOTE

Fixture comes partially assembled.

⚠ Ensure electrical circuit is disconnected before installation.

⚡ Luminaires must be installed in accordance with National electrical code and local regulation.

2 STANDALONE / NON-CONTINUOUS INSTALLATION

STEP 1 : CEILING CUT OUT

Cut an opening in the ceiling as shown in FIG 1, following the dimensions provided in Table 1. Before proceeding with installation, verify that the cutout dimensions are accurate by passing the fixture assembly through the opening to ensure a proper fit.

Table 1

Fixture length	12"	18"	24"	36"	48"	60"	72"	84"
X	7.25"	7.25"	7.25"	7.25"	7.25"	7.25"	7.25"	7.25"
Y	12.75"	18.75"	24.75"	36.75"	48.75"	60.75"	72.75"	84.75"

STEP 2 : THREADED ROD INSTALLATION

Measure the threaded rods according to the provided dimensions and cut off any excess material prior to installation. Each rod must be cut to a length of 9.25 ± 0.13 inches from the bottom of the ceiling, as illustrated in FIG 2.

Space the threaded rods based on the dimensions shown in FIG 3, referencing TABLE 2 for exact measurements.

Install the fixture into the ceiling using the threaded rods (supplied by others) and secure it in place using 1/4-20 locknuts (also by others).

Ensure the fixture is level and securely fastened using all necessary hardware.

Table 2

Fixture length	12"	18"	24"	36"	48"	60"	72"	84"
A	11"	17"	23"	35"	47"	-	-	-
B	-	-	-	-	-	30.5"	35.5"	41.5"
C	-	-	-	-	-	5.92"	5.92"	5.92"
D	6.04"	6.04"	6.04"	6.04"	6.04"	6.04"	6.04"	6.04"

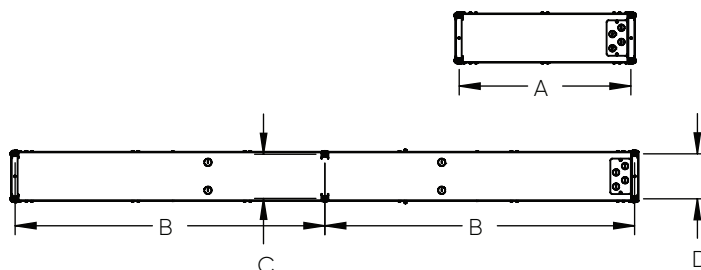


FIG 3

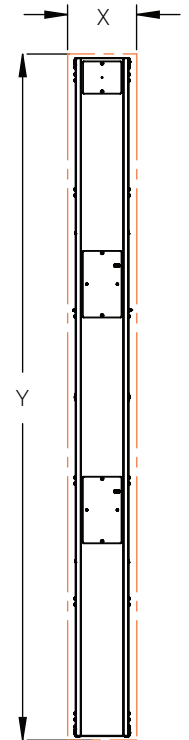


FIG 1

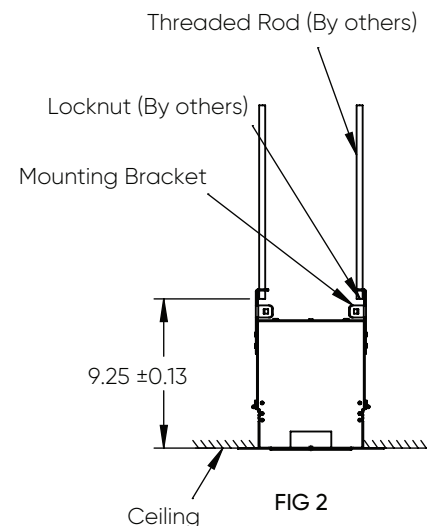


FIG 2

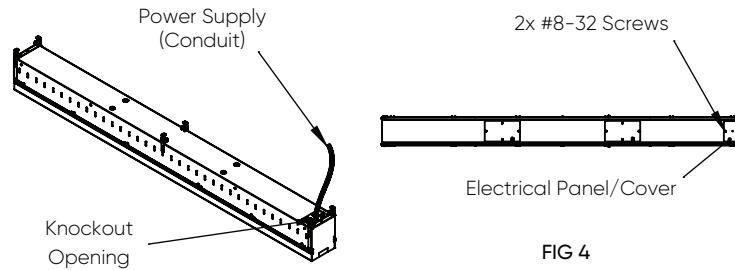
STEP 3 : WIRING CONNECTION

Remove the electrical panel cover as shown in FIG 4.

Break out a knockout opening to allow for necessary electrical connections.

Connect the conduit wires to the power supply. Be sure to follow color codes and/or labeling for correct polarity on (+) and (-) wire connections.

After completing all electrical connections, reattach the electrical panel cover using two #8-32 screws as shown in FIG 4.



STEP 4 : FINISHING

Install the provided trimless flange using drywall screws. This will conceal any excess cutouts and unnecessary fixture features, giving the installation a neat and clean finish.

Complete the installation by applying mudding over the perforated flange to create a seamless appearance (see FIG 5).

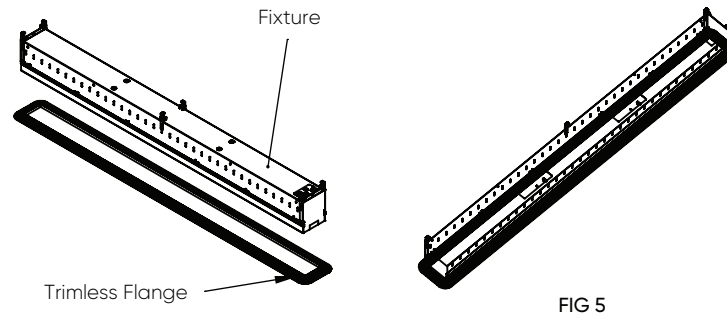


FIG 5

3 CONTINUOUS INSTALLATION

STEP 1

Install the start section as per the previous installation steps.

STEP 2

Each section comes with a pair of 1/4-20 square neck bolts and screws pre-installed on the mounting brackets (one on each side). Remove both fasteners from the mounting bracket (DETAIL-A FIG 6).

STEP 3

Identify the section labeled as "MID".

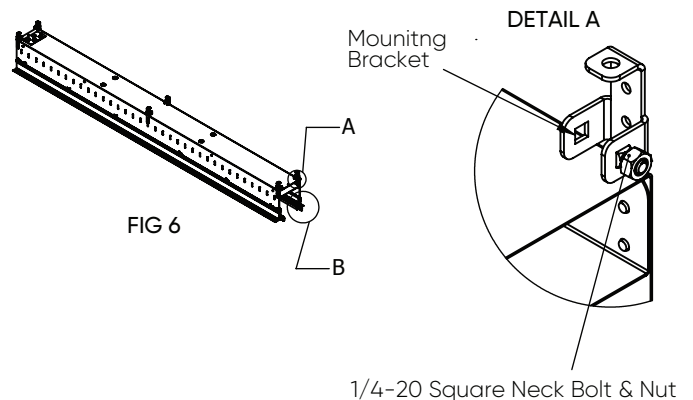


FIG 6

STEP 4

Align the "MID" section with the previously installed "FIRST" section using the alignment pins provided on the "FIRST" section.

STEP 5

Once aligned and positioned closely together, use the intersectional brackets to join the two sections.

STEP 6

The intersectional bracket assembly is pre-installed on all sections except the "END" section.

STEP 7

After aligning the "MID" section, reposition the bracket assembly by loosening the socket nuts on the extrusion side. Slide the bracket assembly along the mid section so it is centered symmetrically between the two sections. (Final position shown in DETAIL-B)

STEP 8

Once in position, tighten the previously loosened socket nuts to secure the assembly in place.

STEP 9

Then, tighten the socket screw and socket nut connecting the two brackets together (see DETAIL-B).

STEP 10

Reinstall the fasteners removed in step 2 to secure the fixture from the top.

STEP 11

Repeat the process for entire run.

STEP 12

Do not overtighten any fasteners during the installation process.

STEP 13

Once all sections are installed, complete the wiring connections as described in Step 3 on Page 2.

STEP 14

For continuous fixtures, trimless flanges are provided in parts (see FIG-7). Flanges marked with "M" are for mid sections. Flanges marked with "E" are for end sections.

STEP 15

Complete the installation of perforated flanges by following Step 4 on Page 2.

