

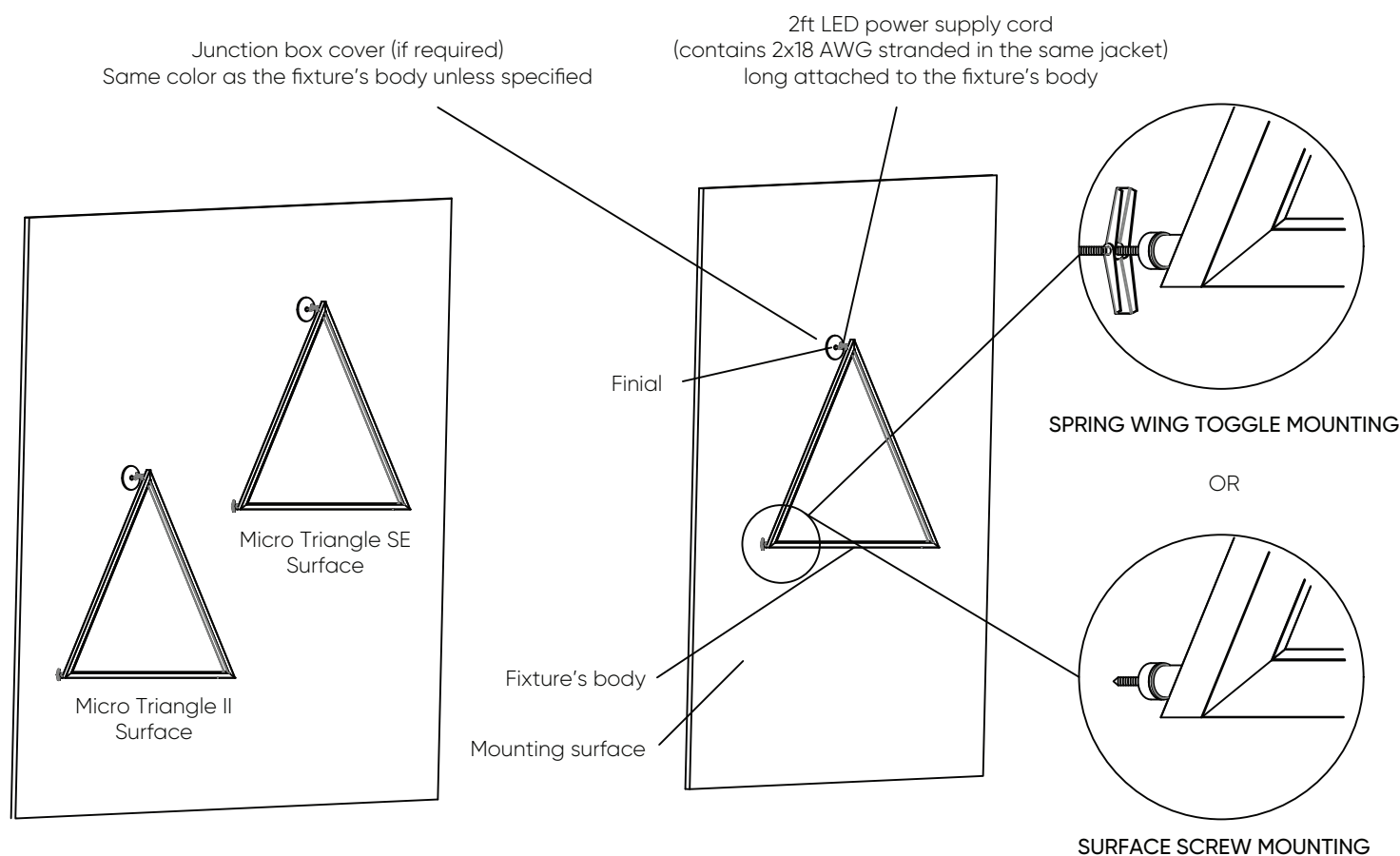
1 IMPORTANT NOTE

Fixture comes partially assembled.

⚠ Ensure electrical circuit is disconnected before installation.

⚡ Luminaires must be installed in accordance with National electrical code and local regulation.

2 MOUNTING TYPES



The position of the junction box cover is for illustration only.
The fixture will be provided with 2ft of cord attached to the body.

3 SPRING WING TOGGLE MOUNTING INSTALLATION

STEP 1
Establish the fixtures (FIG 1)

STEP 2
Mark the mounting holes position (FIG 2)

STEP 3
Remove all the marking point screws (FIG 3)

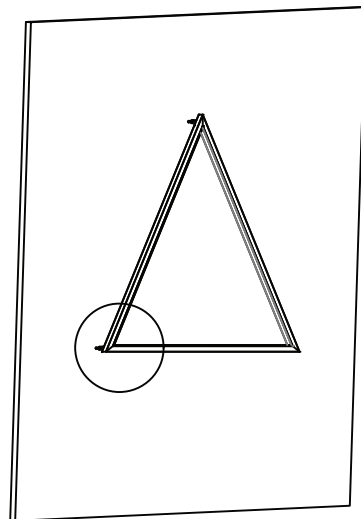


FIG 1

Point screw
for marking

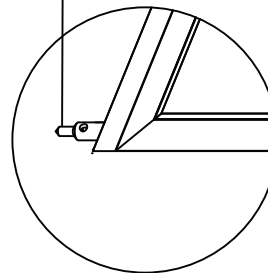


FIG 2

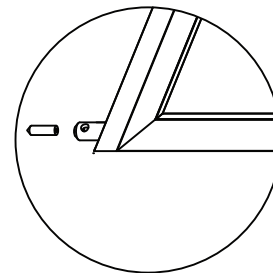


FIG 3

STEP 4
Drill 3/8" holes in the marked points (FIG 4)

STEP 5
Squeeze the springs and insert them in the surface's holes (FIG 5)

STEP 6
Align the holes on the surface bushings with the holes on the fixtures' bushings and tighten the surface bushing using a philips screwdriver (FIG 6)

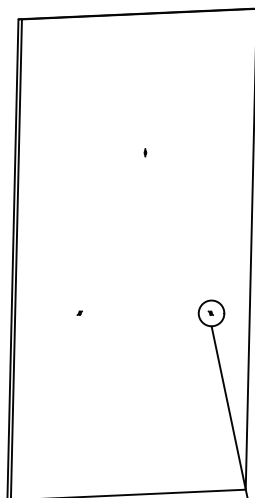


FIG 4

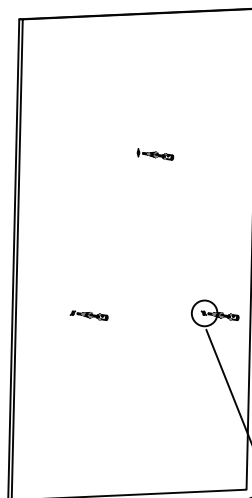


FIG 5

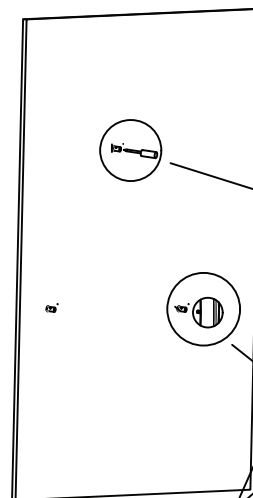
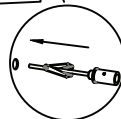
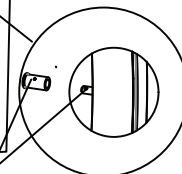
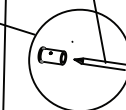


FIG 6

Screwdriver for
#6 Philips head screw



STEP 7

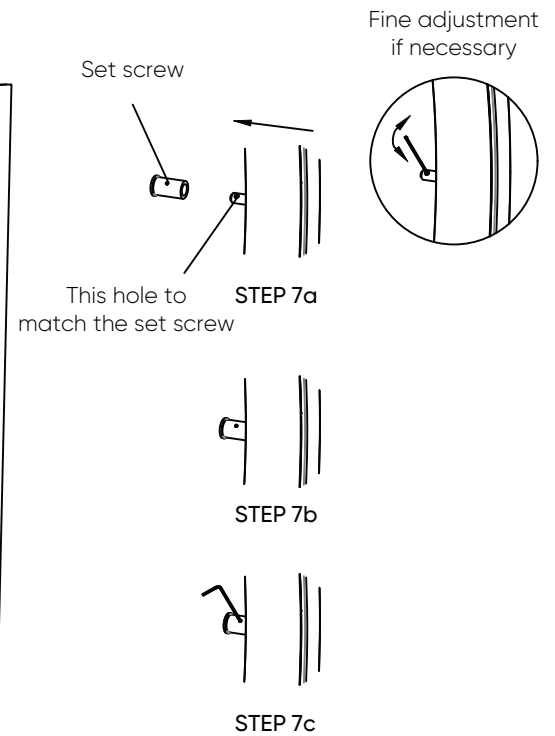
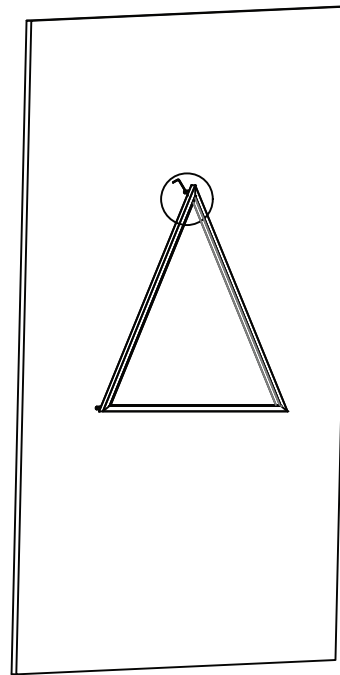
Match the 2 bushings' side holes and using the 0.05" hexagonal key provided tighten the set screw to secure the fixture. Make sure that the head of the set screw is below the bushing surface (STEP 7a, 7b, 7c)

STEP 8

Make the necessary wiring connections

NOTE

The additional wires in between the fixture's cord and the remote driver box are by others



MAX DRIVER BOX REMOTE DISTANCE
FROM THE BODY OF THE FIXTURE

REMOTE WIRE SIZE	18 AWG	16 AWG	14 AWG
MAX. REMOTE DISTANCE	40ft	60ft	90ft

4 SURFACE SCREW MOUNTING INSTALLATION

STEP 1

Follow the steps 1, 2 and 3 from the spring wing toggle mounting installation

STEP 2

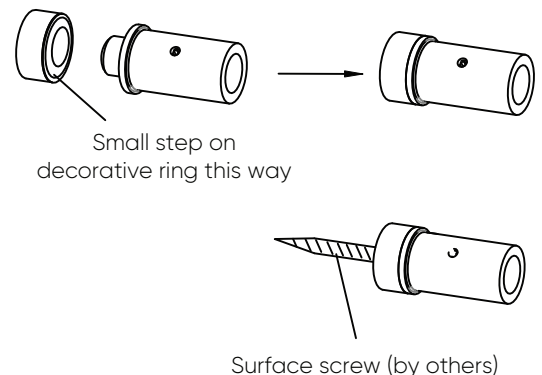
Insert the surface bushings in the decorative rings as shown below

STEP 3

Attach the surface bushing to the surface. Use the appropriate screw (by others) according to the surface material. The surface bushing can fit a #8 screw.

STEP 4

Follow the steps 7 and 8 from the spring wing toggle mounting installation



5 REMOTE DRIVERS' BOX

STEP 1

Remove the 2x 8-32 screws and the drivers' box cover

STEP 2

Remove the necessary Knockouts

STEP 3

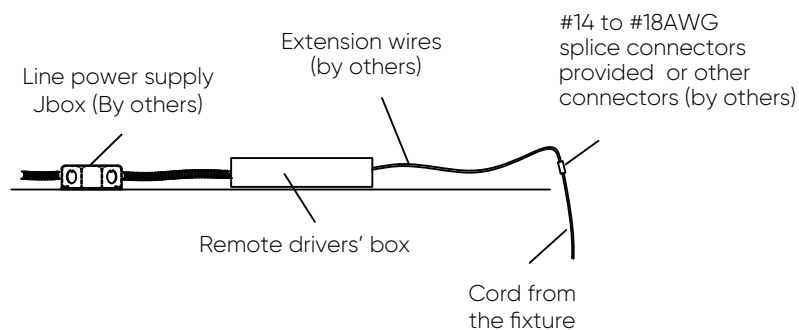
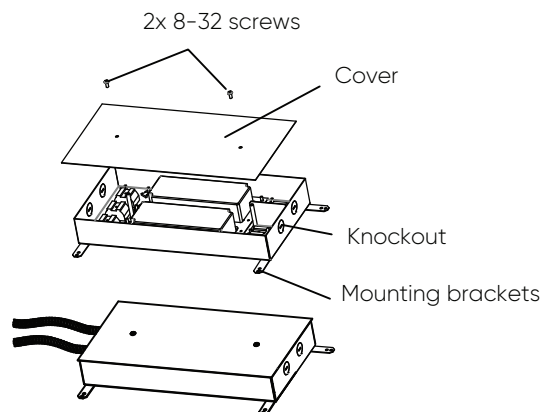
Attach the conduits (not provided)

STEP 4

Make the wiring connections

STEP 5

Install the cover using the previously removed screws
Use the mounting brackets to secure the box in place



NOTE

New construction
For ceiling installation, access from above required