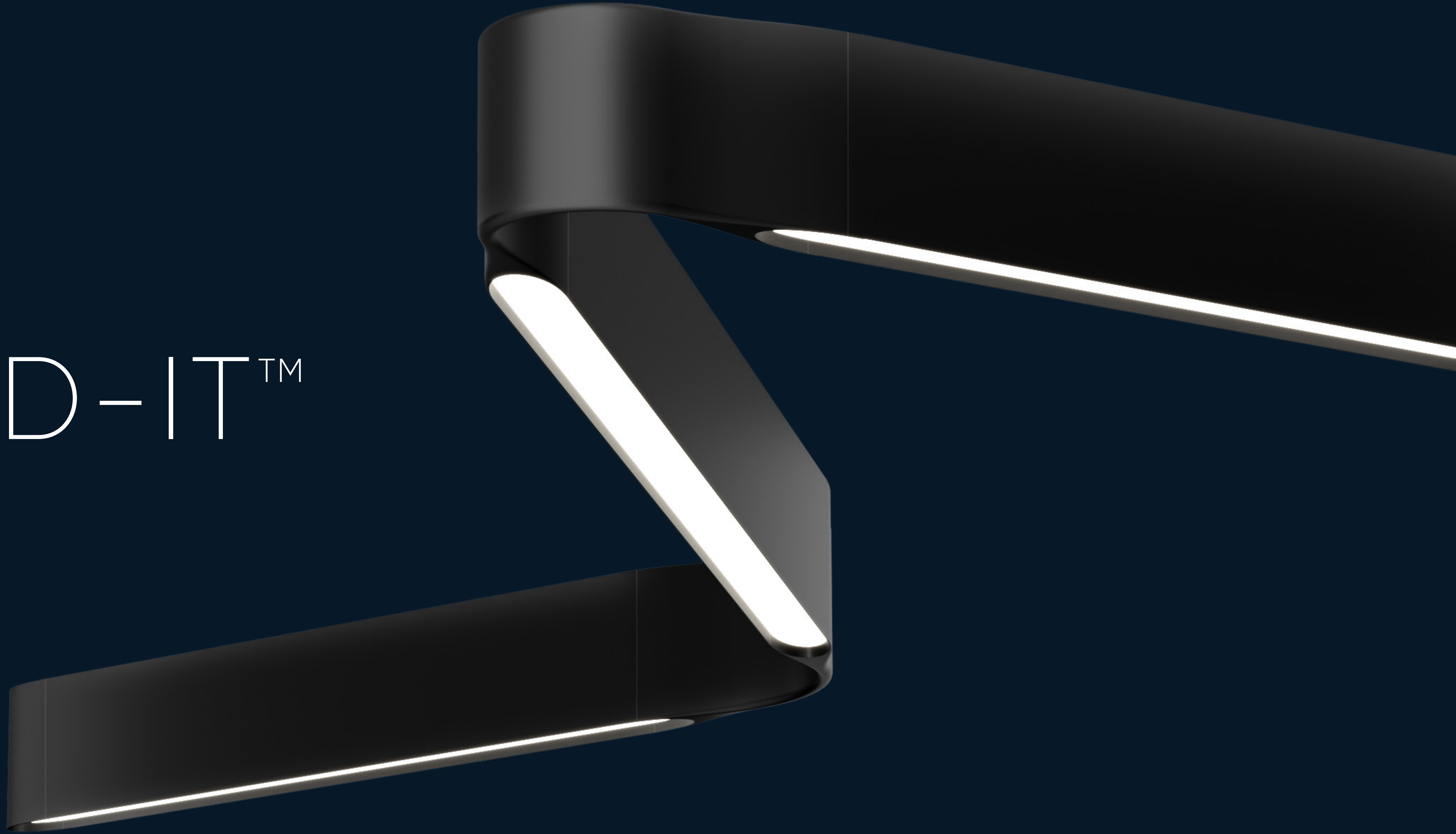




BEND-IT™



BEND-IT

INTRODUCTION

BEND-IT is a highly adaptable lighting system built around a flexible joiner that enables smooth transitions and continuous, flowing layouts. This flexibility allows the fixture to respond naturally to architectural conditions, supporting expressive runs and organic compositions without breaking visual continuity.

Composed of multiple straight lengths, the system supports a wide range of configurations while maintaining a consistent dimensional profile. Finished in Satin Black with curved endcaps, BEND-IT integrates cleanly with architectural elements and contributes to comfortable, well-balanced environments.





FEATURES

FLEXIBLE JOINER

Constructed from soft silicone, the flexible joiner bends up to 180 degrees in any horizontal direction, enabling smooth transitions and flowing layouts. This allows continuous runs and organic shapes that respond directly to site-specific layout requirements.

MULTIPLE SECTION LENGTH OPTIONS

Choose from straight lengths ranging from 2' to 50', in 2' increments, to tailor the lighting design to the scale of the space. Start, Middle, and End sections support a wide range of configurations, with selectable lumen packages, color temperatures, and open-standard control systems to align with project requirements.

AVAILABLE IN DIRECT AND DIRECT/INDIRECT CONFIGURATIONS

The fixture is available in both Direct and Direct/Indirect with a lumen efficacy up to 94 LPW, enabling uniform lighting while lowering energy demand.

ARCHITECTURAL CONTINUITY

Introduces dimensional depth and visual continuity while remaining integrated into the space.





SECTION LENGTHS

BEND-IT is offered in straight lengths from 2' to 50', available in 2' increments.



BEND-IT

Flexible silicon joiner
can bend up to 180 °

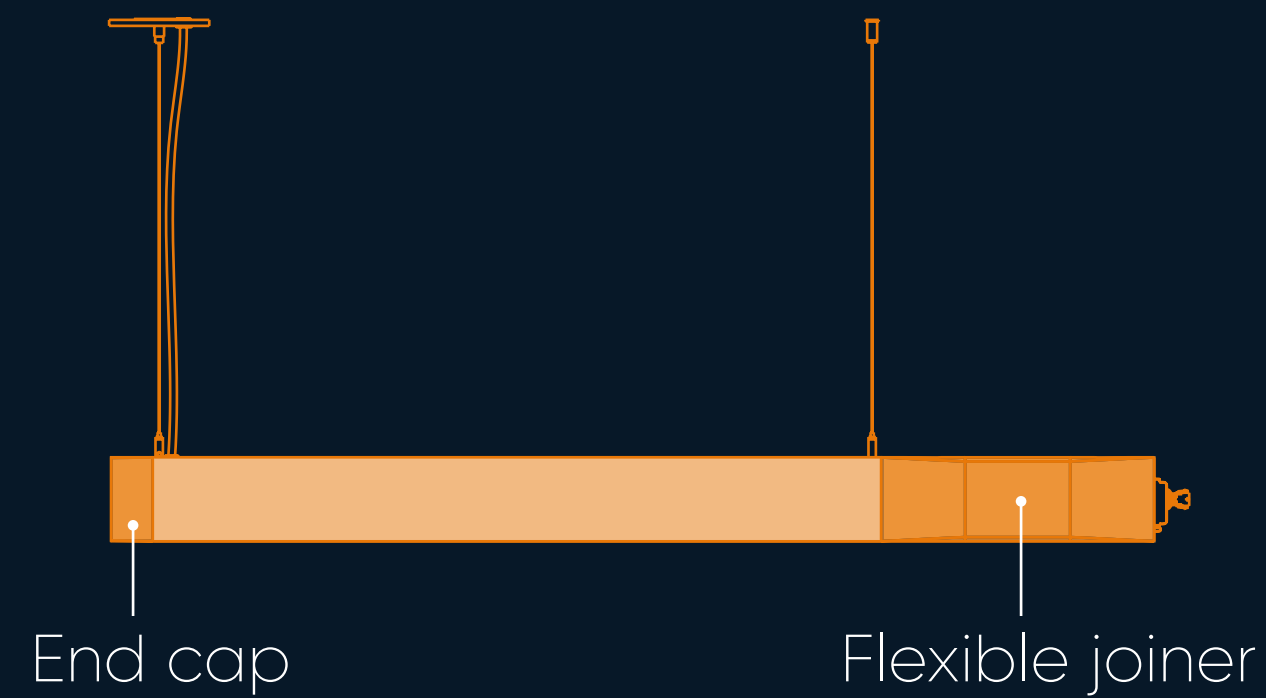
A simple sliding mechanism allows the
suspension point to be easily adjusted on site.



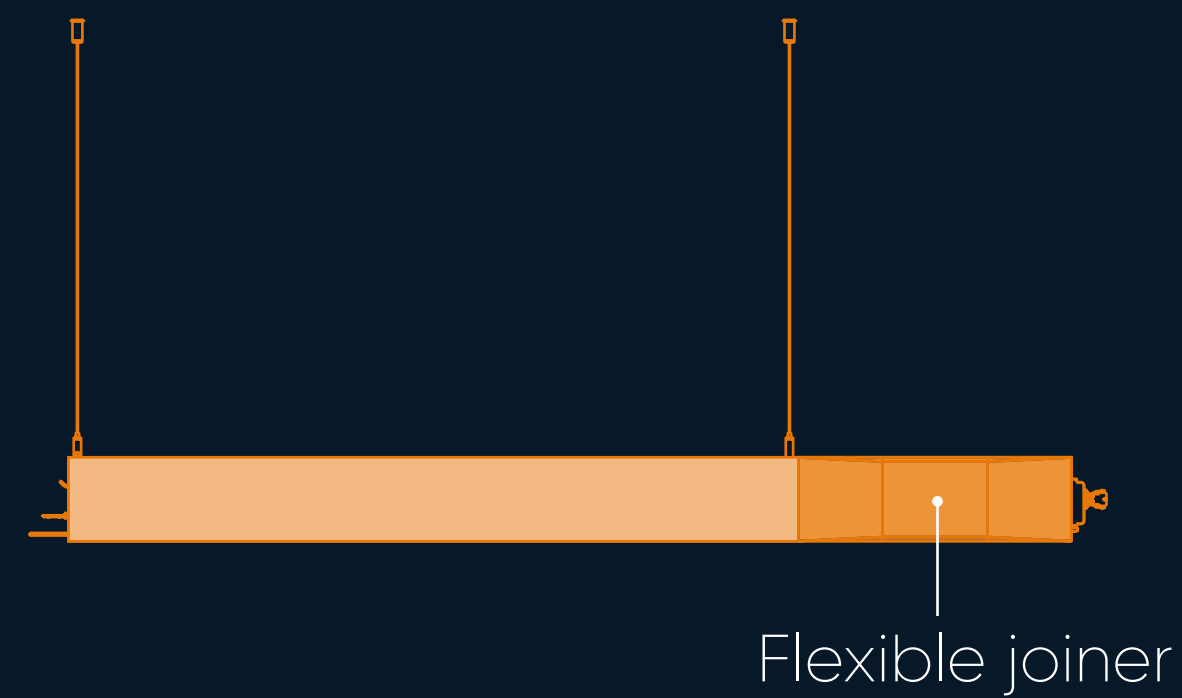
BEND-IT

SECTION TYPE

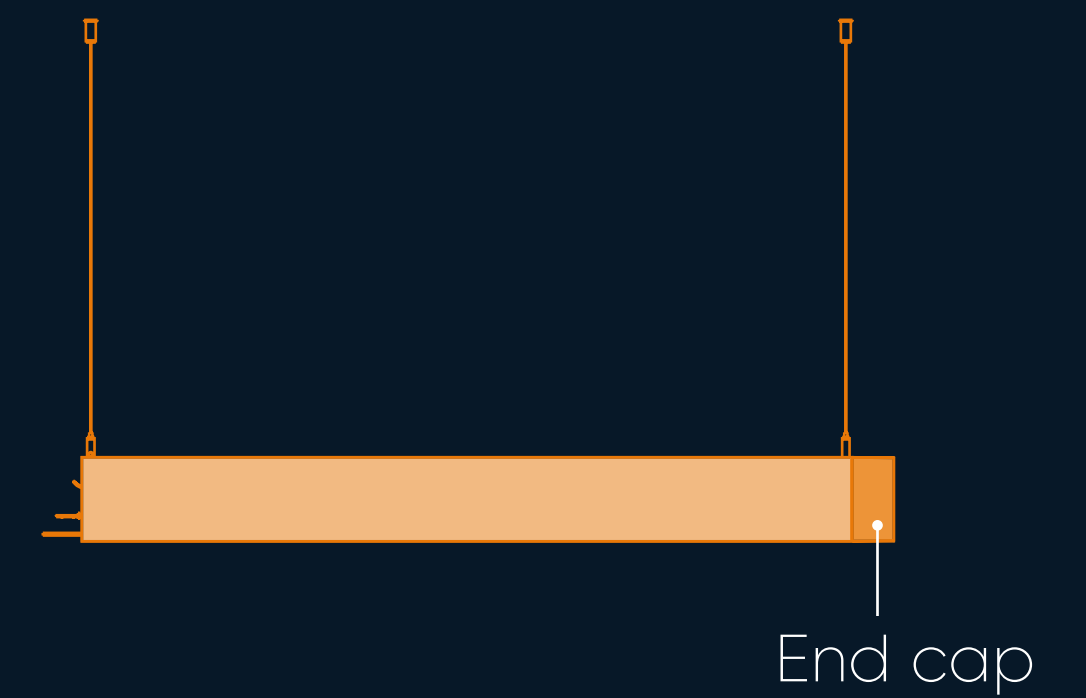
This fixture comes with 3 section types, ranging from Start, Middle and End:



START SECTION



MIDDLE SECTION



END SECTION



SUSTAINABLE ILLUMINATION

BEND-IT's design delivers 94 lumens per watt, providing balanced and energy-efficient illumination.

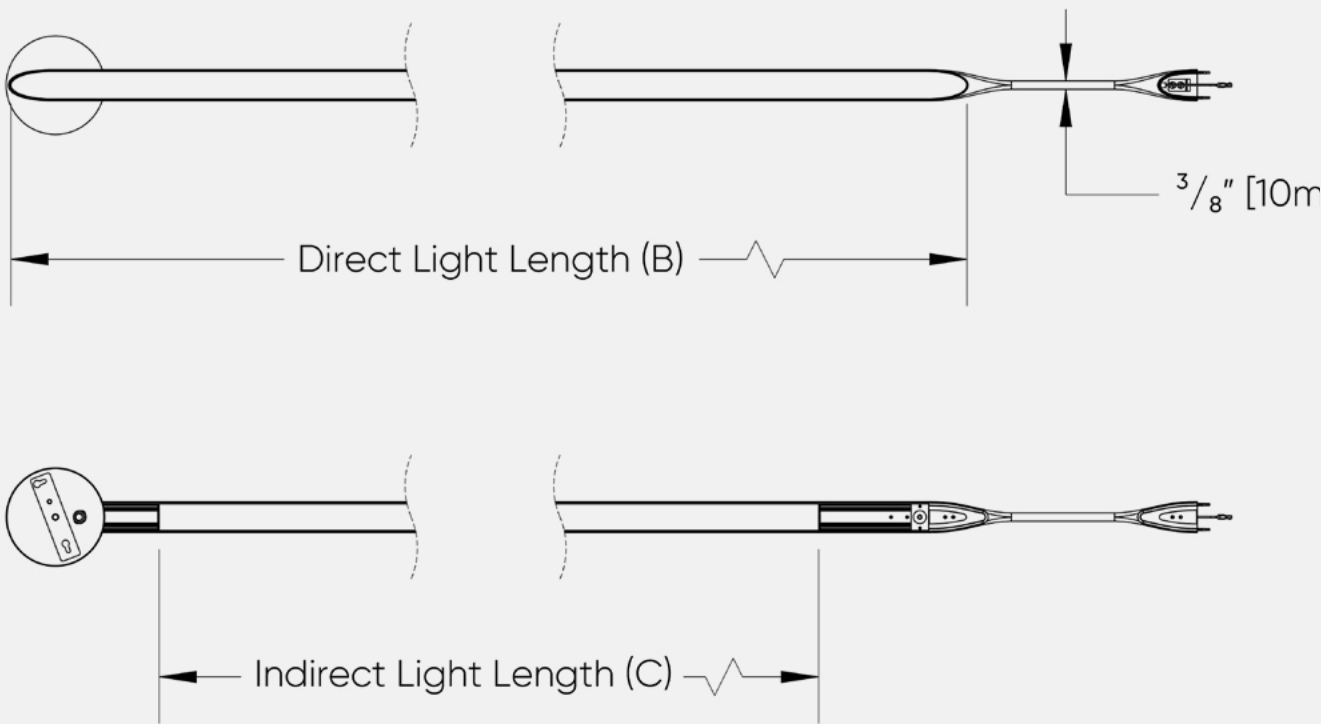
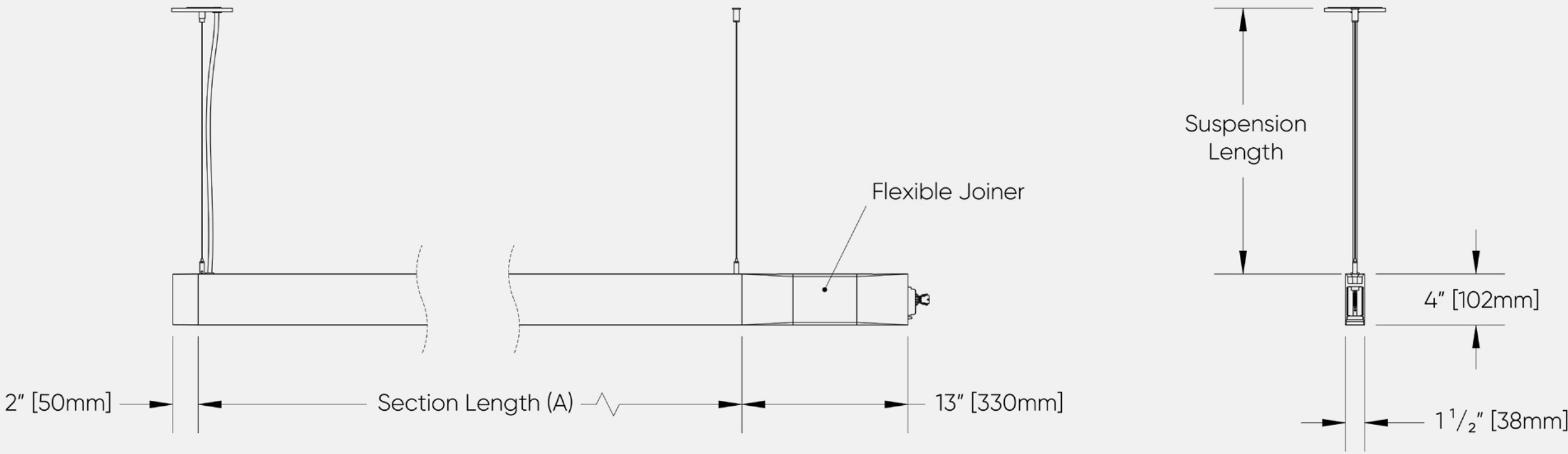


BEND-IT

BEND-IT's unique flexible joiners blend precision engineering with customizable form that enables unique configurations for the space, delivering uniform illumination that anchors and harmonizes the design intent of any space.

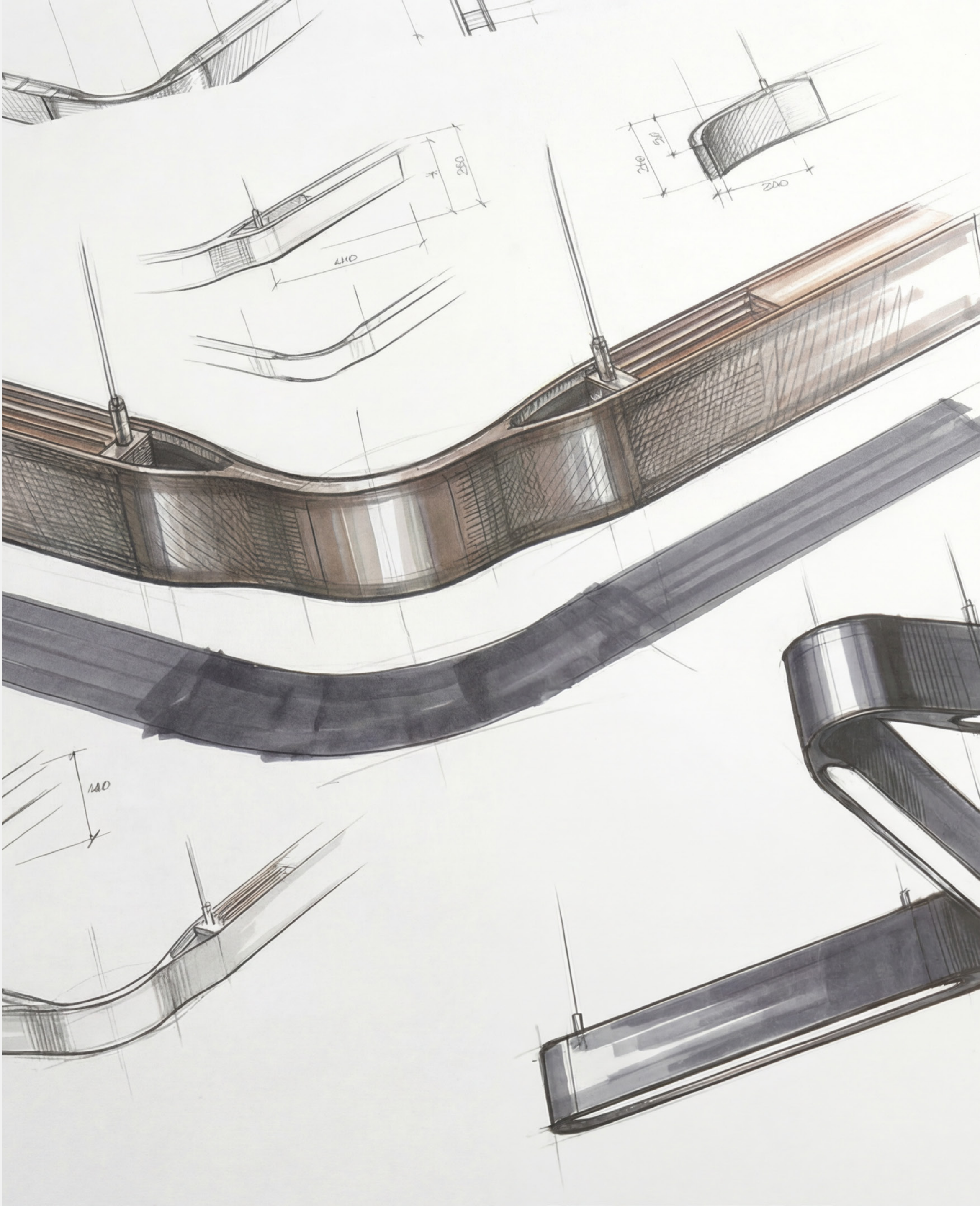
DIMENSIONS

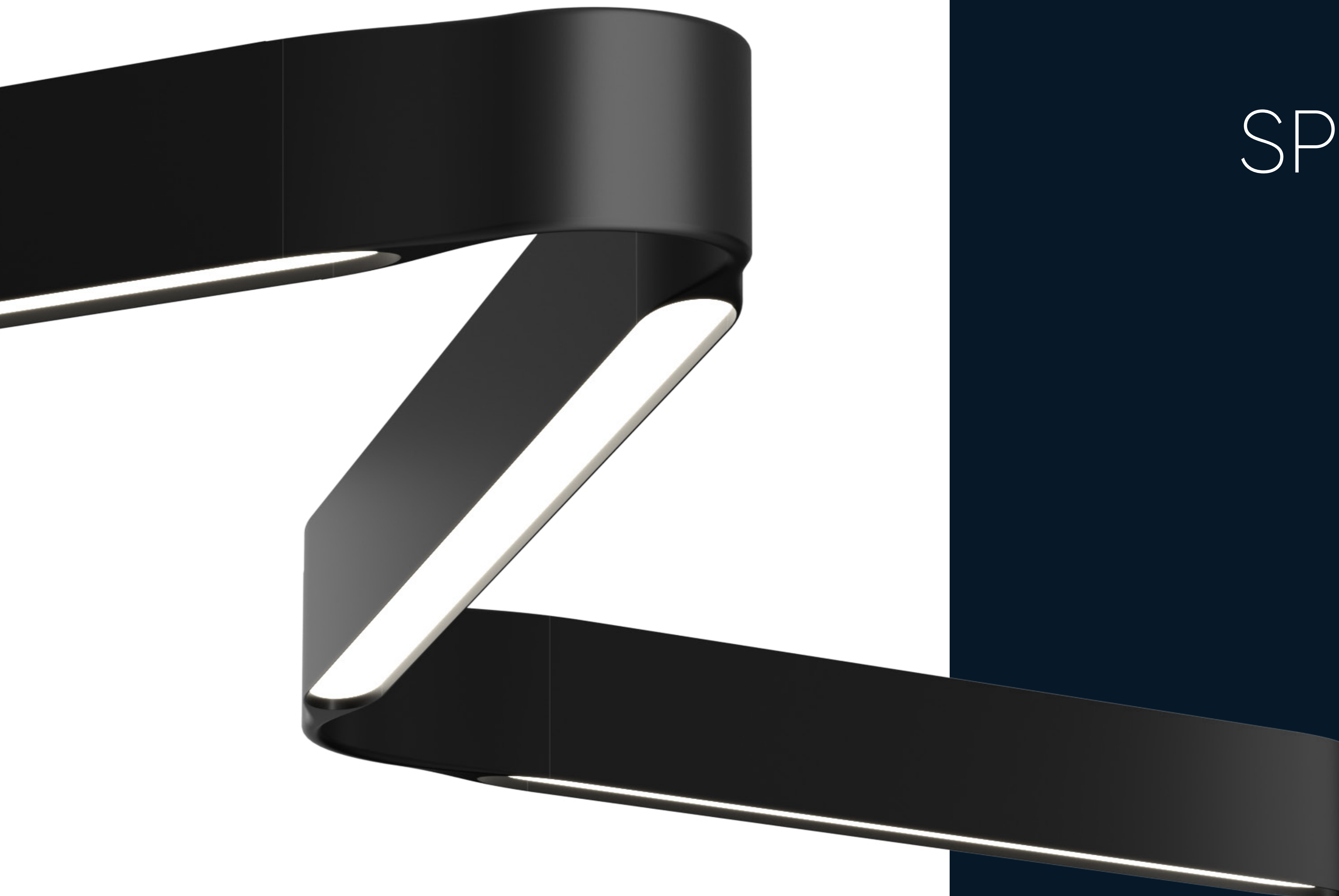
Straight lengths are offered from 2' to 50', in 2' increments.



FIXTURE SIZE	A Section Length	B Direct Light Length	C Indirect Light Length
2FT [SL02]	21 1/2" [546mm]	25 3/16" [640mm]	12 3/8" [315mm]
4FT [SL04]	45 1/2" [1156mm]	49 3/16" [1250mm]	34 13/16" [884mm]
6FT [SL06]	69 1/2" [1765mm]	73 3/16" [1859mm]	57 3/8" [1458mm]
8FT [SL08]	93 1/2" [2375mm]	97 3/16" [2469mm]	85 7/8" [2182mm]
10FT [SL10]	117 1/2" [2985mm]	121 3/16" [3079mm]	108 5/8" [2758mm]
12FT [SL12]	141 1/2" [3594mm]	145 3/16" [3658mm]	131 3/8" [3338mm]

Each section type supports continuous runs up to 50 ft. Please refer to the Linear Length Configurations document.





TECHNICAL SPECIFICATIONS

Lumen Packages:

Direct: 200 LM/FT to 800 LM/FT

Direct/Indirect: 200 LM/FT to 1000 LM/FT

CCT:

2700K, 3000K, 3500K, 4000K, Tunable White

CRI:

80+ or 90+

Circuits:

Single and Dual

Emergency:

Remote

Dimming (Remote Drivers):

0-10V Dimming at 1.0%,

DALI Dimming at 0.1% and 1.0%,

DMX Dimming

Sensors:

Consult factory regarding sensor compatibility.

Input Voltage:

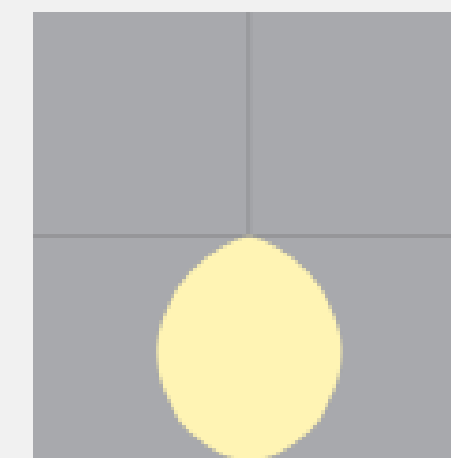
V1-120/277V, V2-240V, V3-347V, V4-Low Voltage

Maximum Power Consumption:

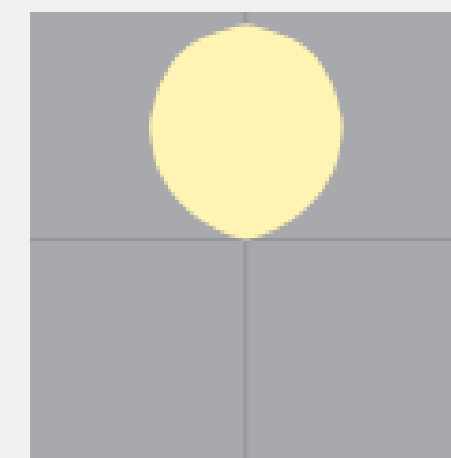
500 W (Approx)



LIGHT DISTRIBUTION

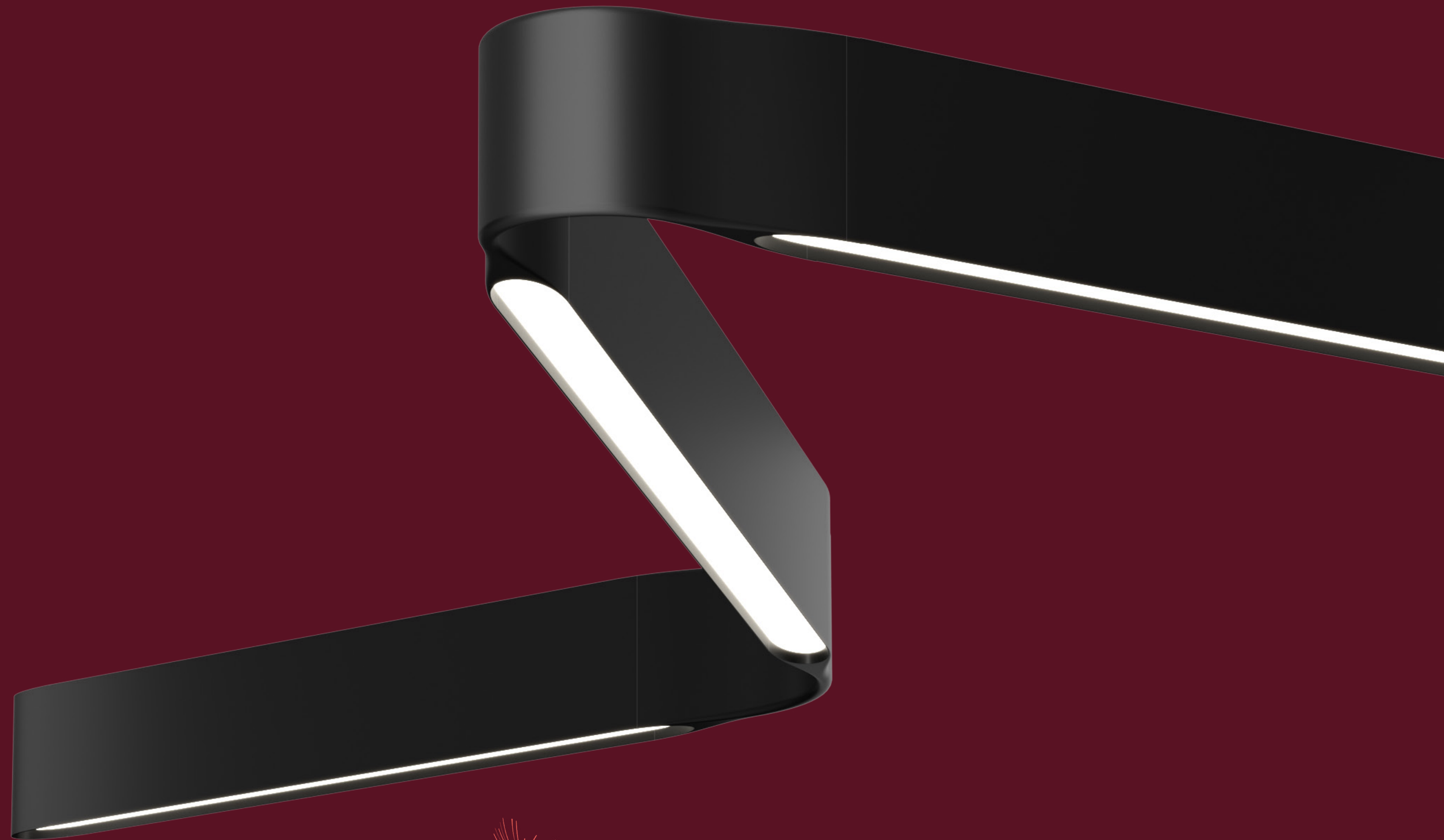


Direct



Direct/Indirect

Available in direct-only or direct/indirect illumination.



Declare.®



Linear Series
BETA-CALCO INC

Final Assembly: Toronto, Ontario, Canada
Life Expectancy: 5 Year(s)
End of Life Options: Recyclable (99.6%), Landfill (0.4%)

Ingredients:

Aluminum; Small Electrical Components - RoHS Compliant¹; Polymethyl methacrylate; Steel; Acrylonitrile-Butadiene-Styrene Copolymer; Iron; Carbonic acid, polymer with 4,4'-(1-methylethylidene)bis[phenol]; Copper; Manganese; Phenol, 4,4'-(1-methylethylidene)bis-, polymer with 2,2'-[(1-methylethylidene) bis(4,1-phenyleneoxymethylene)]bis[oxirane]; Silicon; **Polyvinyl chloride**; Magnesium; Antimony oxide (Antimony trioxide); Magnesium, [carbonato(2-)]hexadecahydroxybis(aluminum)hexa-; Tin, Organic; Tris(2-ethylhexyl) trimellitate; Titanium dioxide; Octadecanoic acid, calcium salt; Zinc; Phosphoric acid, 2-ethylhexyl diphenyl ester; Chromium, metallic; 1,3,5-Triglycidyl-s-triazinetriene; Methyl Ethyl Ketone; Titanium; Nickel (Metallic); 2-Methylimidazole; Carbon black; magnesium dioxide; Cyclohexanone

¹LBC Temp Exception RL-002 - Small Electrical Components

Living Building Challenge Criteria:

I-13 Red List:
☐ LBC Red List Free % Disclosed: 100% at 100ppm
☐ LBC Red List Approved VOC Content: Not Applicable
☒ Declared

I-10 Interior Performance: Not Applicable
I-14 Responsible Sourcing: Not Applicable

BET-0001

Original Issue Date: 2023

MANUFACTURER RESPONSIBLE FOR LABEL ACCURACY
INTERNATIONAL LIVING FUTURE INSTITUTE™ living-future.org/declare



Decorative Series
BETA-CALCO INC

Final Assembly: Toronto, Ontario, Canada
Life Expectancy: 5 Year(s)
End of Life Options: Recyclable (99.7%), Landfill (0.3%)

Ingredients:

Aluminum; Small Electrical Components - RoHS Compliant¹; Iron; Steel; Polyethylene Terephthalate; Glass, oxide, chemicals; Carbonic acid, polymer with 4,4'-(1-methylethylidene)bis[phenol]; Polyethylene; Brass; Poly[imino(1,6-dioxo-1,6- hexanediyl)imino-1,6-hexanediyl]; Siloxanes and Silicones, di-Me, Me vinyl, vinyl group-terminated; Manganese; Copper; Zinc; Silicon; Magnesium; Nylon; Siloxanes and Silicones, di-Me, di-Ph, vinyl group-terminated; Chromium, metallic; **Polyvinyl chloride**; Phenol, 4,4'-(1-methylethylidene)bis-, polymer with 2,2'-[(1-methylethylidene) bis(4,1-phenyleneoxymethylene)]bis[oxirane]; Titanium dioxide; Cyclotetrasiloxane; Nickel (Metallic); Antimony oxide (Antimony trioxide); Magnesium, [carbonato(2-)]hexadecahydroxybis(aluminum)hexa-; Polymethyl methacrylate; Tin, Organic; 1,3,5-Triglycidyl-s-triazinetriene; Titanium; nickel zinc; Silanol terminated polydimethylsiloxane; Molybdenum; Diisopropoxytitanium bis(ethylacetoacetate); Tungsten; Octadecanoic acid, calcium salt; Vanadium; Cobalt metal powder; Methyl Ethyl Ketone

¹LBC Temp Exception RL-002 - Small Electrical Components

Living Building Challenge Criteria:

I-13 Red List:
☐ LBC Red List Free % Disclosed: 100% at 100ppm
☐ LBC Red List Approved VOC Content: Not Applicable
☒ Declared

I-10 Interior Performance: Not Applicable
I-14 Responsible Sourcing: Not Applicable

BET-0002

Original Issue Date: 2023

MANUFACTURER RESPONSIBLE FOR LABEL ACCURACY
INTERNATIONAL LIVING FUTURE INSTITUTE™ living-future.org/declare

WHY DECLARE MATTERS

Every year, the building industry accounts for 39% of global carbon emissions, and the health impacts of the built environment are drawing increased scrutiny. In earning a Declare label for our linear and decorative line, we’re joining over 200 manufacturers by responding to the market’s demand for decreased emissions and increased transparency.



BETACALCO

Since 1941, we have held a passion for designing cutting-edge professional lighting that changes how spaces are illuminated while upholding the enduring principles of quality and craftsmanship.

Our objective is to work in lockstep with our clients by developing innovative products that meet their variegated design needs and comply with the latest energy and construction standards. Furthermore, our manufacturing infrastructure allows us to scale products and satisfy niche design requirements.

We use leading-edge wellness technologies including BIOS, Tunable White, and Dim to Warm; and employ open-source connectivity to intelligent control systems, including Power over Ethernet.

Our customer-centric approach to service and product design is the basis of our reputation and how we have become a key lighting supplier across the globe.

betacalco.com

sales@betacalco.com

