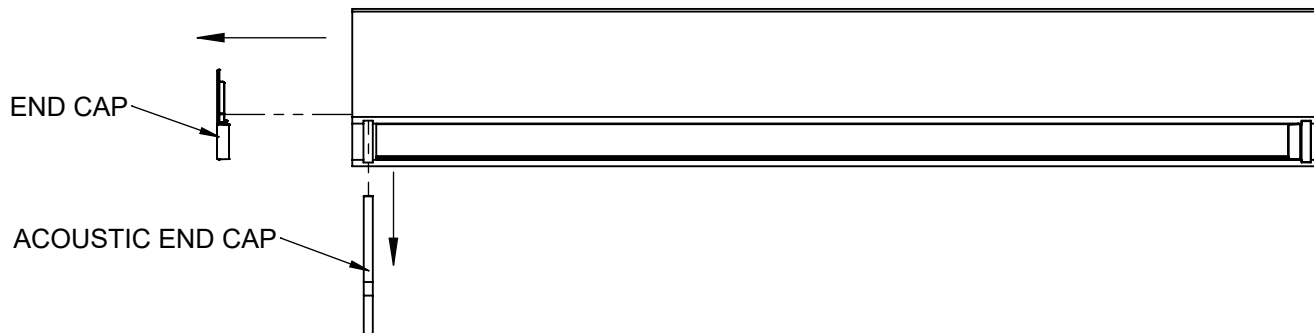
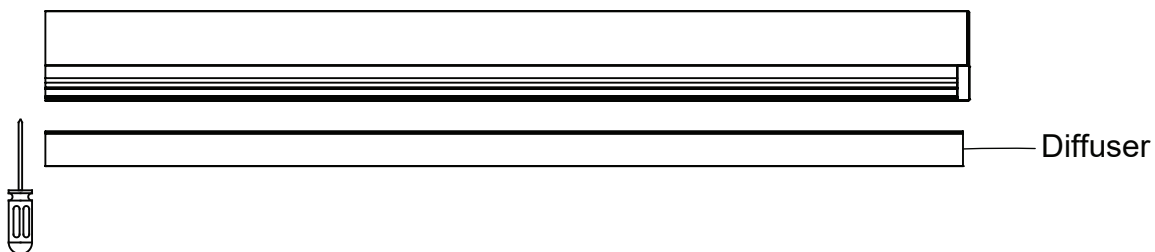


#### Driver Replacement Instruction

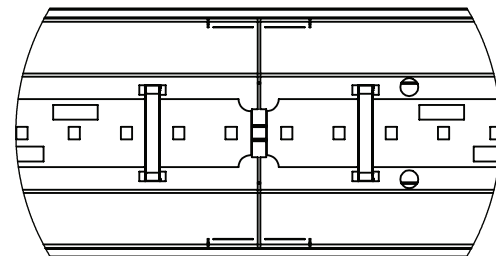
1. Remove the end cap by pulling it away from the fixture.



2. Remove the diffuser(s) with the assistance of a flat head screwdriver for easier removal.

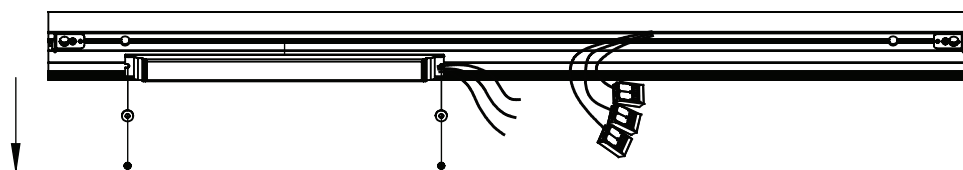


3. Remove the reflector(s) by inserting a flat head screwdriver into the opening slot and then pulling it off.

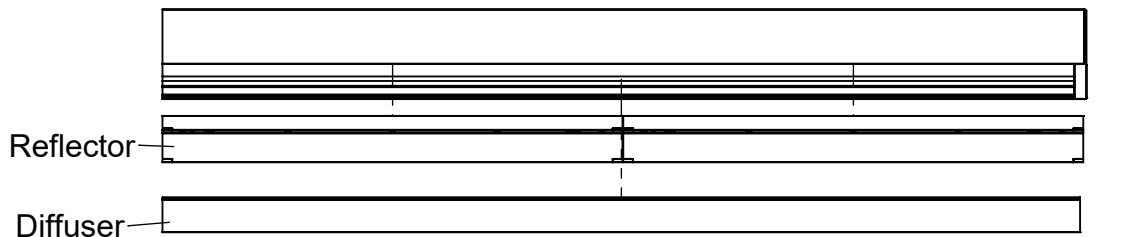


4. Disconnect wiring from the driver.

5. Detach the driver from the fixture by unscrewing it.  
Swap out the driver and re-make wiring connections.



6. Re-install diffuser(s), reflector(s) and end cap.

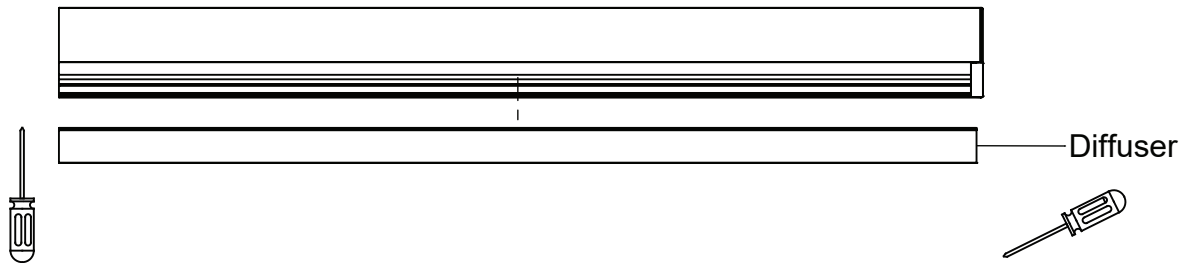


#### LED Replacement Instruction

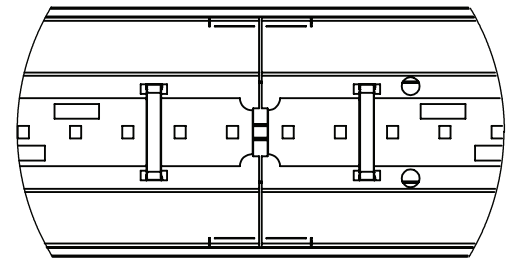
1. Remove the end cap by pulling it away from the fixture.



2. Remove the diffuser(s) with the assistance of a flat head screwdriver for easier removal.



3. Remove the reflector(s) by inserting a flat head screwdriver into the opening slot and then pulling it off.



4. Disconnect wiring between reflector and fixture.

5. Replace the LED board by pushing the clips together to detach the LED and the reflector from each other.

6. Re-attach clips to the reflector and re-make wiring connections to the LED board.

7. Re-install diffuser(s), reflector(s) and end cap.

