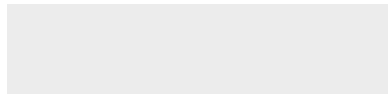
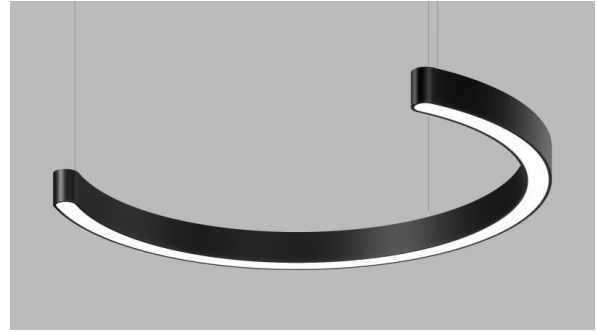


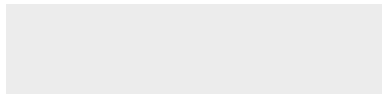


LUMI-ARC™

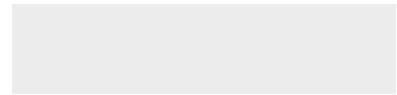
FULL SPECIFICATION SHEET



FIXTURE TYPE



FIXTURE CODE

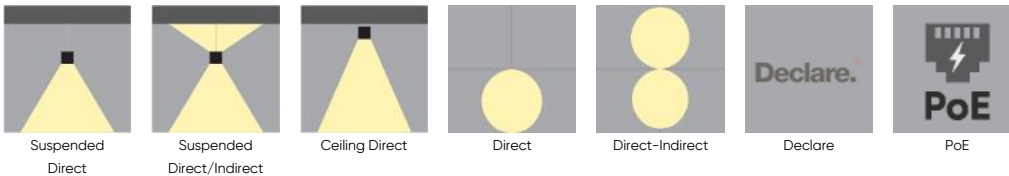


QUANTITIES

1 DESCRIPTION

The luminous arc takes shape through graceful curvature, creating a sweeping band of light that defines space with sculptural elegance. Designed to merge architectural presence with refined illumination, **LUMI-ARC** transforms environments whether it serves as a dramatic focal point or complements existing design elements. The curved diffused lens provides uniform brightness along its elegant span, ensuring consistent illumination that follows the fixture's form. Available in multiple diameters, arc degrees, and customizable configurations, **LUMI-ARC** adapts to diverse spatial requirements, offering scalable solutions for upscale restaurants, hotel lobbies, corporate offices, boutique spaces, and more. Its presence moves beyond functional lighting to become an architectural feature that shapes the atmosphere and the experience.

2 OPTICS & FEATURES



3 APPROVALS



4 GENERAL SPECIFICATION

BODY

Aluminum.

SUSPENSION

Steel cables. Recommended minimum mounting heights: 1ft (305mm).

REMOTE EMERGENCY

Emergency option provides a 1.5 hour (3 hours for EU) emergency lighting facility. The remote system includes the inverter module, NiCad batteries and a remote wall/ceiling LED charge indicator and test switch (NA only) Maximum distance between wall/ceiling plate and luminaire is 15' (4.5m). Test switch fits a single gang box (not supplied).

POE

Lumi-Arc can integrate into your data network via Power over Ethernet (PoE) connectivity.

L70 @25°C

> 60,000 hrs.

APPROVALS

Damp Rated.

SEISMIC BRACING

Seismic bracing kits are available to meet compliance requirements. Consult the factory for details.

FINISH

Powder coated.

LENS

Protruding Lens 0.08" (2.1mm)

DRIVERS

Remote, HPF electronic drivers for 120-277V (EU-240V) dimming. Wire size 18 AWG - max distance (from fixture to drivers) 40' (12.2m), wire size 16 AWG - max distance 60' (18.3m), wire size 14 AWG - max distance 90' (27.4m). Drivers must be accessible after installation. Drivers are either remote mounted or integral to the canopy. For longer remote distances, consult factory.

MECHANICAL

Luminaires mount directly over J box (by others - North America only).

DELIVERED LUMENS

Delivered lumens & LPW based on 4000K (min 90 CRI).

DESIGN

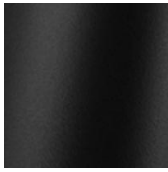
US Design Patent Pending.

5 DESIGN OPTIONS

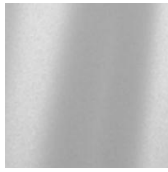
FIXTURE FINISH



White



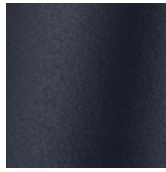
Black
Metallic -
Textured



Silver
Metallic -
Textured



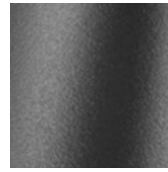
Gold Metallic
- Textured



Midnight
Blue Metallic
- Textured



Copper
Metallic



Charcoal
Metallic -
Textured



Bronze
Metallic -
Textured



Champagne
Metallic

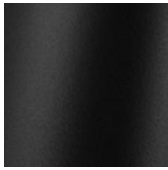


Red Metallic
- Textured

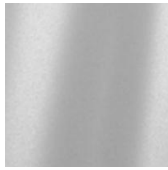
CANOPY FINISH



White



Black
Metallic -
Textured



Silver
Metallic -
Textured



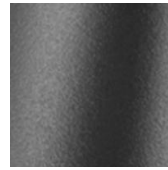
Gold Metallic
- Textured



Midnight
Blue Metallic
- Textured



Copper
Metallic



Charcoal
Metallic -
Textured



Bronze
Metallic -
Textured



Champagne
Metallic



Red Metallic
- Textured

6 HOW TO ORDER

1. LUMINAIRE TYPE

LMRP Pendant

LMRC Ceiling

2. DIAMETER

SL02 2ft

SL03 3ft

SL04 4ft

SL05 5ft

SL06 6ft

SL07 7ft

Max Lumens with Direct-Indirect and AD300.

3. ARC DEGREE

AD120 120° ¹

AD240 240°

AD300 300° ²

¹ If ceiling luminaire type is required with a 2' (SL02) diameter, the drivers will be in a remote box. Consult factory.

² The angle is 300° for 2' and 3' diameters, 320° for 4' and 5' diameters, and 330° for 6' and 7' diameters.

4. DIRECTION

DT1 Direct

DT2 Direct/Indirect

5. LUMENS (DIRECT)

LUA025 25% of standard output **LUA050** 50% of standard output **LUA075** 75% of standard output **LUA100** 100% of standard output

6. LUMENS (INDIRECT)

LUB000 Not required **LUB025** 25% of standard output **LUB050** 50% of standard output **LUB075** 75% of standard output
LUB100 100% of standard output

7. CRI

CR90 CRI 90+

8. CCT

CTA27 2700K

CTA30 3000K

CTA35 3500K

CTA40 4000K

9. VOLTAGE

V1 120/277V

V2 240V ¹

V3 347V ²

V4 Low Voltage ³

¹ Not available in North America. ² Available with DA01 dimming only. ³ V4 available with DA45 dimming only.

10. DIMMING

DA01 0-10V Dimming 1.0%

DA20 DALI Dimming 0.1% ²

DA21 DALI Dimming 1.0% ³

DA45 PoE ¹

¹ Available with V4 only. ² The drivers will be in a remote box. ³ Consult factory.

11. SUSPENSION

SS0 Not required ¹

SS1 Vertical, Integral driver ¹

SS3 Vertical, Remote driver

¹ SS0 is for ceiling luminaire type. For Dali dimming, the drivers will be in a remote box. ² Only available with DA01. Not available with V3.

12. FIXTURE FINISH

FA01 White	FA02 Black Metallic - Textured	FA20 Silver Metallic - Textured	FA25 Gold Metallic - Textured
FA44 Midnight Blue Metallic - Textured	FA45 Copper Metallic	FA46 Charcoal Metallic - Textured	FA47 Bronze Metallic - Textured
FA52 Champagne Metallic	FA53 Red Metallic - Textured		

13. CANOPY FINISH

CF01 White	CF02 Black Metallic - Textured	CF20 Silver Metallic - Textured	CF25 Gold Metallic - Textured
CF44 Midnight Blue Metallic - Textured	CF45 Copper Metallic	CF46 Charcoal Metallic - Textured	CF47 Bronze Metallic - Textured
CF52 Champagne Metallic	CF53 Red Metallic - Textured		

14. EMERGENCY

E0 Not required	E2 Emergency system - Remote ¹
------------------------	--

¹ One extra power cord will be supplied with remote emergency. Not available with V3.

15. CIRCUITS

CS1 Single circuit	CS2 Dual circuit
---------------------------	-------------------------

7 PERFORMANCE DATA

SL02-AD120-DT1	Lumens	Watts	LPW	SL02-AD120-DT2	Lumens	Watts	LPW
LUA025	570	5	105	LUB025	570	4	150
LUA050	1100	11	97	LUB050	1110	8	142
LUA075	1510	17	91	LUB075	1600	12	133
LUA100	2000	24	85	LUB100	2080	16	126

SL02-AD240-DT1	Lumens	Watts	LPW	SL02-AD240-DT2	Lumens	Watts	LPW
LUA025	1140	11	105	LUB025	1140	8	150
LUA050	2190	23	97	LUB050	2220	16	142
LUA075	3030	33	91	LUB075	3200	24	133
LUA100	4000	47	85	LUB100	4150	32	126

SL02-AD300-DT1	Lumens	Watts	LPW	SL02-AD300-DT2	Lumens	Watts	LPW
LUA025	1420	14	105	LUB025	1420	9	150
LUA050	2740	28	97	LUB050	2780	20	142
LUA075	3790	42	91	LUB075	4000	30	133
LUA100	5000	59	85	LUB100	5200	41	126

SL03-AD120-DT1

	Lumens	Watts	LPW
LUA025	830	8	107
LUA050	1610	16	99
LUA075	2220	24	92
LUA100	2930	34	86

SL03-AD120-DT2

	Lumens	Watts	LPW
LUB025	830	5	152
LUB050	1630	11	144
LUB075	2340	17	135
LUB100	3040	24	128

SL03-AD240-DT1

	Lumens	Watts	LPW
LUA025	1670	16	107
LUA050	3210	33	99
LUA075	4440	48	92
LUA100	5870	68	86

SL03-AD240-DT2

	Lumens	Watts	LPW
LUB025	1670	11	152
LUB050	3250	23	144
LUB075	4690	35	135
LUB100	6090	48	128

SL03-AD300-DT1

	Lumens	Watts	LPW
LUA025	2090	20	107
LUA050	4020	41	99
LUA075	5550	60	92
LUA100	7330	85	86

SL03-AD300-DT2

	Lumens	Watts	LPW
LUB025	2090	14	152
LUB050	4070	28	144
LUB075	5860	43	135
LUB100	7610	60	128

SL04-AD120-DT1

	Lumens	Watts	LPW
LUA025	1090	10	106
LUA050	2100	21	98
LUA075	2900	32	91
LUA100	3830	45	85

SL04-AD120-DT2

	Lumens	Watts	LPW
LUB025	1090	7	151
LUB050	2120	15	142
LUB075	3060	23	134
LUB100	3970	31	127

SL04-AD240-DT1

	Lumens	Watts	LPW
LUA025	2180	21	106
LUA050	4190	43	98
LUA075	5790	63	91
LUA100	7650	90	85

SL04-AD240-DT2

	Lumens	Watts	LPW
LUB025	2180	14	151
LUB050	4250	30	142
LUB075	6120	46	134
LUB100	7940	63	127

SL04-AD300-DT1

	Lumens	Watts	LPW
LUA025	2900	27	106
LUA050	5580	57	98
LUA075	7700	84	91
LUA100	10180	119	85

SL04-AD300-DT2

	Lumens	Watts	LPW
LUB025	2900	19	151
LUB050	5650	40	142
LUB075	8140	61	134
LUB100	10560	83	127

SL05-AD120-DT1

	Lumens	Watts	LPW
LUA025	1360	13	105
LUA050	2610	27	98
LUA075	3610	40	91
LUA100	4770	56	85

SL05-AD120-DT2

	Lumens	Watts	LPW
LUB025	1360	9	151
LUB050	2650	19	142
LUB075	3810	29	133
LUB100	4950	39	126

SL05-AD240-DT1

	Lumens	Watts	LPW
LUA025	2720	26	105
LUA050	5230	54	98
LUA075	7220	79	91
LUA100	9550	112	85

SL05-AD240-DT2

	Lumens	Watts	LPW
LUB025	2720	18	151
LUB050	5300	37	142
LUB075	7630	57	133
LUB100	9900	78	126

SL05-AD300-DT1

	Lumens	Watts	LPW
LUA025	3610	34	105
LUA050	6950	71	98
LUA075	9610	105	91
LUA100	12700	149	85

SL05-AD300-DT2

	Lumens	Watts	LPW
LUB025	3610	24	151
LUB050	7040	50	142
LUB075	10140	76	133
LUB100	13170	104	126

SL06-AD120-DT1

	Lumens	Watts	LPW
LUA025	1620	15	106
LUA050	3120	32	98
LUA075	4300	47	92
LUA100	5690	66	86

SL06-AD120-DT2

	Lumens	Watts	LPW
LUB025	1620	11	152
LUB050	3150	22	143
LUB075	4540	34	134
LUB100	5900	46	127

SL06-AD240-DT1

	Lumens	Watts	LPW
LUA025	3240	30	106
LUA050	6230	63	98
LUA075	8610	94	92
LUA100	11370	132	86

SL06-AD240-DT2

	Lumens	Watts	LPW
LUB025	3240	21	148
LUB050	6310	44	137
LUB075	9090	68	128
LUB100	11800	94	119

SL06-AD300-DT1

	Lumens	Watts	LPW
LUA025	4450	42	106
LUA050	8570	87	98
LUA075	11830	129	92
LUA100	15640	182	86

SL06-AD300-DT2

	Lumens	Watts	LPW
LUB025	4450	29	152
LUB050	8680	60	143
LUB075	12490	93	134
LUB100	16220	127	127

SL07-AD120-DT1

	Lumens	Watts	LPW
LUA025	1890	18	105
LUA050	3630	37	97
LUA075	5020	55	91
LUA100	6630	78	85

SL07-AD120-DT2

	Lumens	Watts	LPW
LUB025	1890	13	150
LUB050	3680	26	142
LUB075	5300	40	133
LUB100	6880	54	126

SL07-AD240-DT1

	Lumens	Watts	LPW
LUA025	3770	36	105
LUA050	7260	75	97
LUA075	10030	110	91
LUA100	13260	156	85

SL07-AD240-DT2

	Lumens	Watts	LPW
LUB025	3770	25	150
LUB050	7350	52	142
LUB075	10590	80	133
LUB100	13750	109	126

SL07-AD300-DT1

Lumens

Watts

LPW

SL07-AD300-DT2

Lumens

Watts

LPW

LUA025

5190

49

105

LUA050

9990

102

97

LUA075

13790

152

91

LUA100

18230

214

85

LUB025

5190

34

151

LUB050

10110

71

142

LUB075

14570

109

133

LUB100

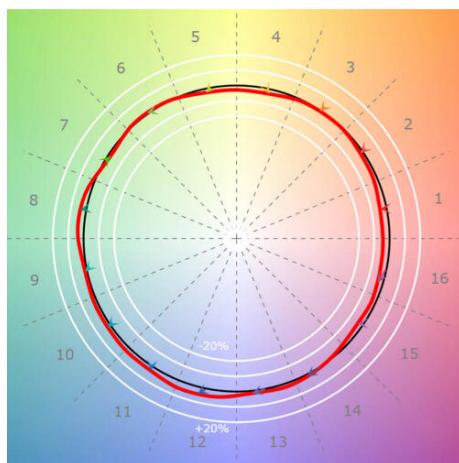
18910

150

126

8 TM-30 DATA

CCT 2700K



CRI(Ra)

94

CRI(R9)

58

TM30(Rf)

93

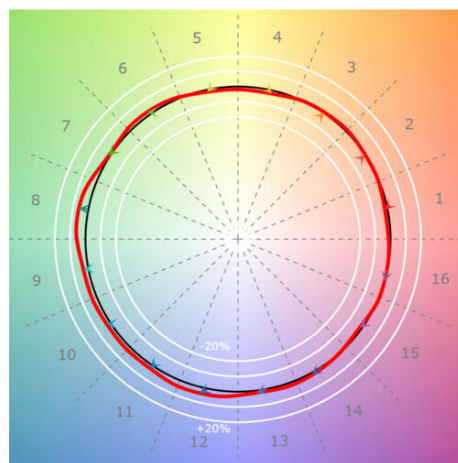
TM30(Rg)

99

Duv

0.0004

CCT 3000K



CRI(Ra)

94

CRI(R9)

75

TM30(Rf)

93

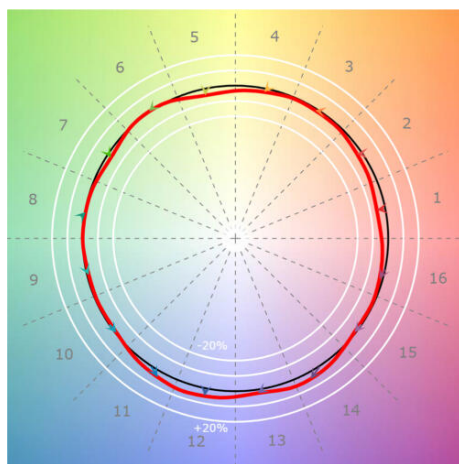
TM30(Rg)

102

Duv

-0.0001

CCT 3500K



CRI(Ra)

94

CRI(R9)

53

TM30(Rf)

91

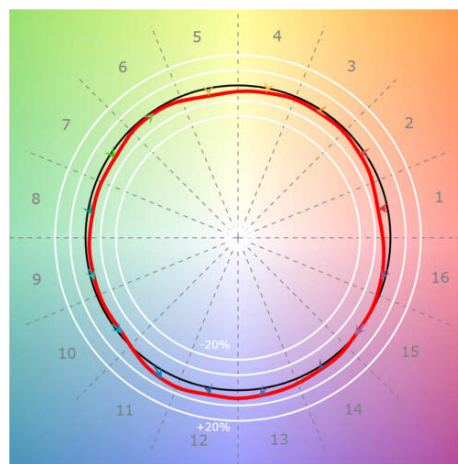
TM30(Rg)

98

Duv

0.0009

CCT 4000K



CRI(Ra)

92

CRI(R9)

50

TM30(Rf)

89

TM30(Rg)

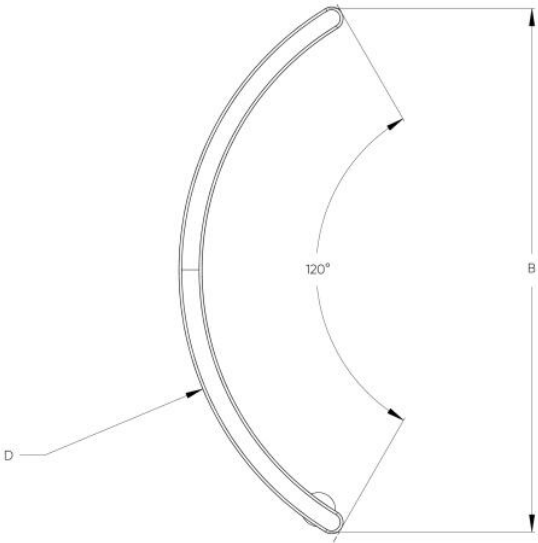
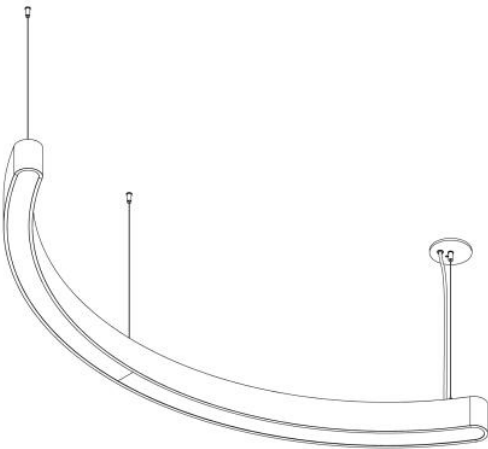
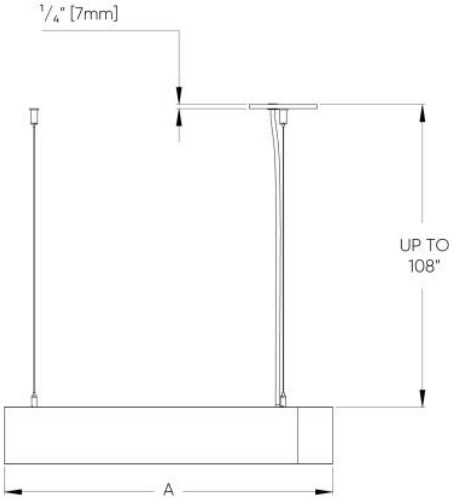
97

Duv

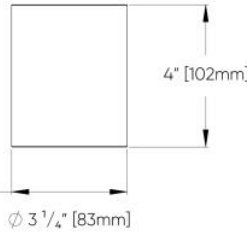
0.0011

9 DIMENSIONAL DIAGRAMS

120-Deg Direct/Indirect

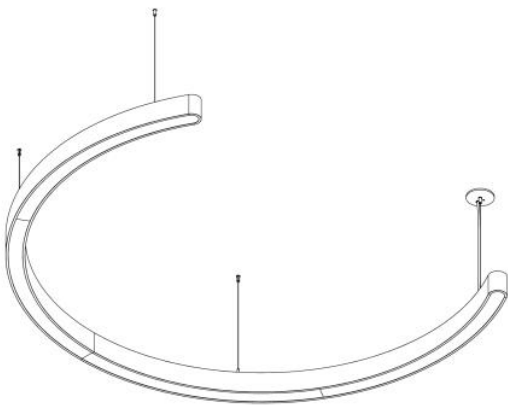
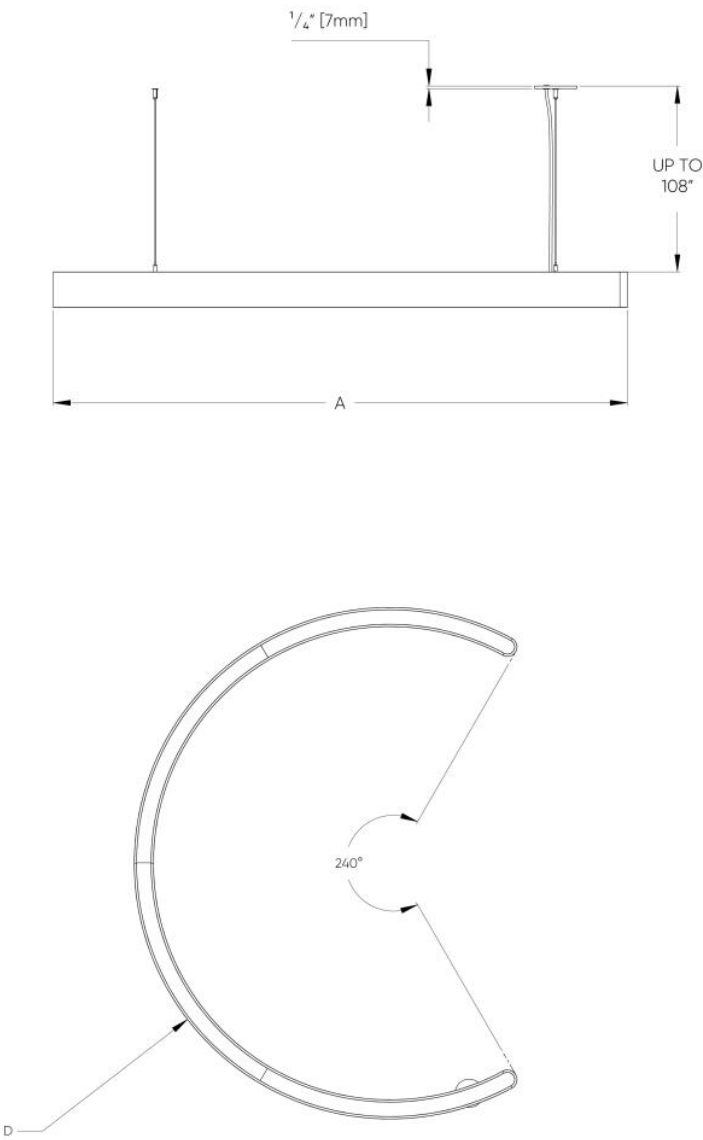


PROFILE DIMENSIONS

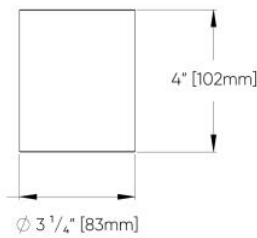


LUMINAIRE DIMENSIONS				
Nominal Size	D (Actual Diameter)	A (Depth)	B (Width)	No. of Suspensions
2FT	27" [686mm]	8 1/8" [207mm]	22 3/8" [569mm]	3
3FT	38 1/4" [972mm]	10 1/2" [266mm]	31 5/8" [802mm]	3
4FT	50 1/4" [1277mm]	14" [355mm]	42 5/8" [1083mm]	3
5FT	62 1/4" [1581mm]	16 7/8" [430mm]	53" [1347mm]	3
6FT	74 1/4" [1886mm]	20 1/4" [513mm]	63 1/4" [1620mm]	3
7FT	86 1/4" [2191mm]	23 1/8" [588mm]	73 1/2" [1867mm]	3

240-Deg Direct/Indirect

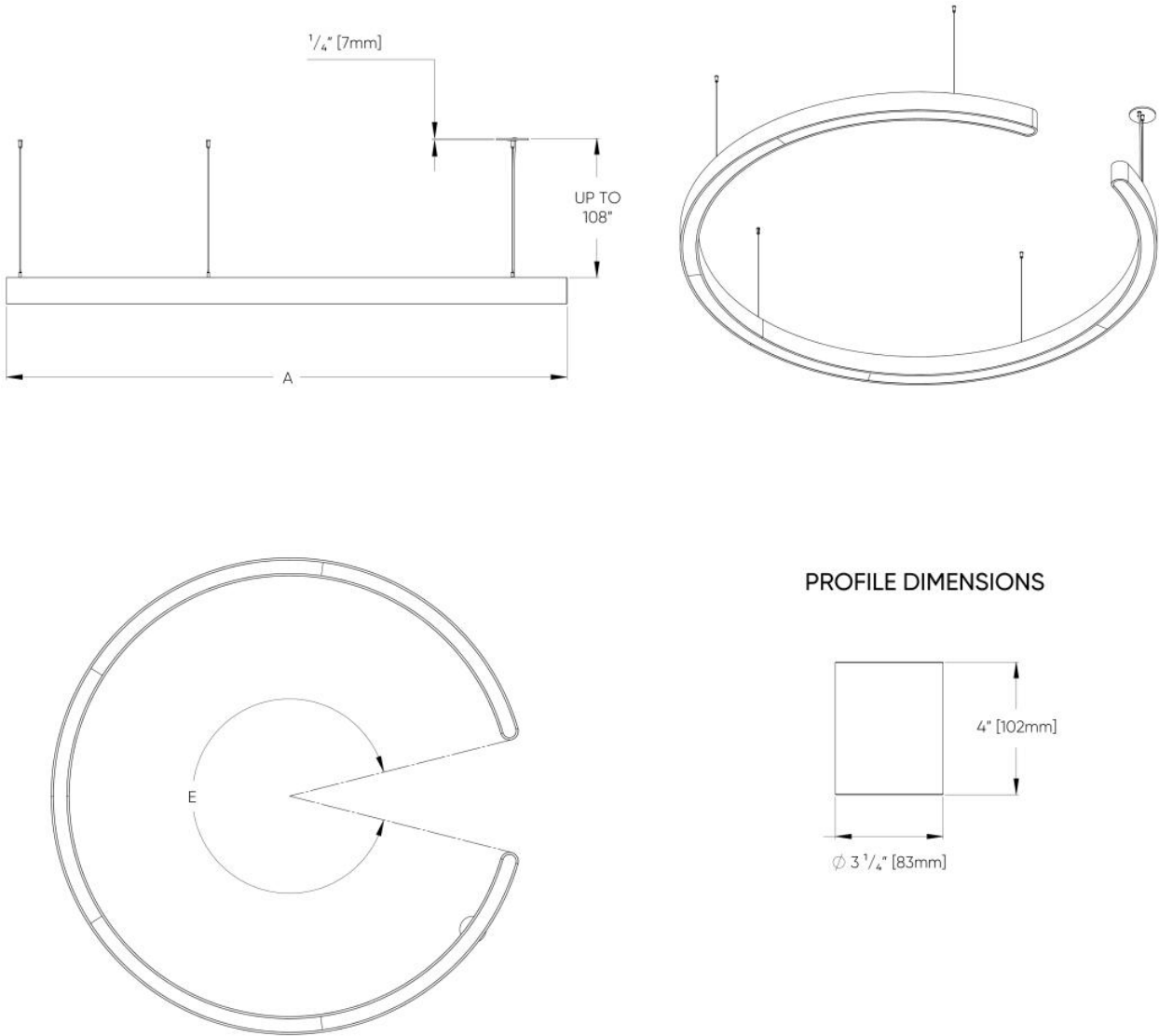


PROFILE DIMENSIONS

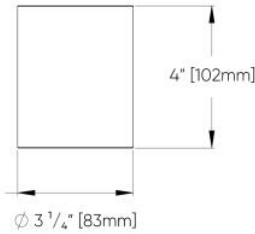


LUMINAIRE DIMENSIONS			
Nominal Size	D (Actual Diameter)	A (Depth)	No. of Suspensions
2FT	27" [686mm]	19 7/8" [505mm]	3
3FT	38 1/4" [972mm]	27 1/8" [708mm]	3
4FT	50 1/4" [1277mm]	37 3/8" [951mm]	3
5FT	62 1/4" [1581mm]	46 3/8" [1178mm]	3
6FT	74 1/4" [1886mm]	55 1/4" [1415mm]	3
7FT	86 1/4" [2191mm]	64 1/2" [1640mm]	4

300-Deg Direct/Indirect



PROFILE DIMENSIONS



LUMINAIRE DIMENSIONS				
Nominal Size	D (Actual Diameter)	A (Depth)	E (Sector Angle)	No. of Suspensions
2FT	27" [686mm]	24 1/4" [626mm]	300°	3
3FT	38 1/4" [972mm]	34 1/4" [887mm]	300°	3
4FT	50 1/4" [1277mm]	48 3/8" [1229mm]	320°	3
5FT	62 1/4" [1581mm]	59 1/4" [1522mm]	320°	3
6FT	74 1/4" [1886mm]	72 3/4" [1849mm]	330°	5
7FT	86 1/4" [2191mm]	84 1/2" [2146mm]	330°	5