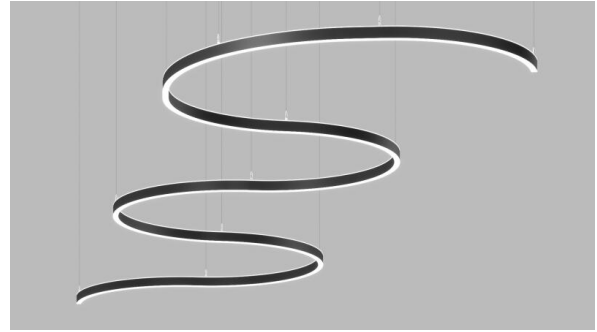




MICRO SQUIGGLE™

FULL SPECIFICATION SHEET



Fixture Type

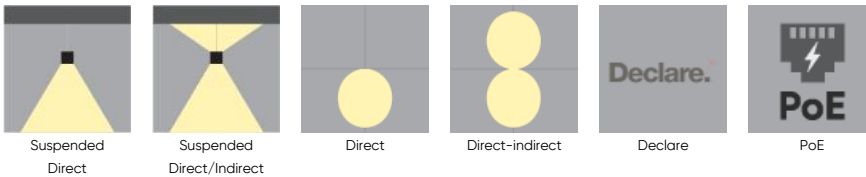
Fixture Code

Quantities

1 DESCRIPTION

MICRO SQUIGGLE adapts to your space with fluid versatility. This highly customizable curvilinear lighting system features a sleek 1-inch aperture and integrates seamlessly with architectural design. With a variety of curves, straight sections, and joiners, it allows you to create unique configurations that wrap around structural elements, enhancing the space's architectural expression while meeting your specific design needs.

2 OPTICS & FEATURES



3 APPROVALS



4 GENERAL SPECIFICATION

BODY AND TRIM

Steel and aluminum.

FINISH

Powder coated for standard finishes.

DIFFUSERS

Protruding Lens 0.08" (2.1mm)

DRIVERS

Remote, HPF electronic drivers for 120-277V, 347V (EU-240V) dimming. Wire size 18 AWG – max distance (from fixture to drivers) 40' (12.2m), wire size 16 AWG – max distance 60' (18.3m), wire size 14 AWG – max distance 90' (27.4m). Drivers must be accessible after installation. Drivers are either remote mounted or integral to the canopy depending on the size of the fixture.

MECHANICAL

Luminaires mount directly over J box (by others – North America only).

REMOTE EMERGENCY

Emergency option provides a 1.5 hour (3 hours for EU) emergency lighting facility. The remote system includes the inverter module, NiCad batteries and a remote wall/ceiling LED charge indicator and test switch (NA only) Maximum distance between wall/ceiling plate and luminaire is 15' (4.5m). Test switch fits a single gang box (not supplied).

L70 @25°C

> 60,000 hrs.

SEISMIC BRACING

Seismic bracing kits are available to meet compliance requirements. Consult the factory for details.

POWER CABLE

Silver braided.

SUSPENSION

Steel cables.

CORNER RADIUS

Minimum corner radius is 6 inches

ELECTRICAL

Luminaires are pre-wired with a factory installed branch circuit wiring with quick connectors. Through wiring is used to connect individual luminaires.

POE

Squiggle can integrate into your data network via Power over Ethernet (PoE) connectivity.

DELIVERED LUMENS

Delivered lumens & LPW based on 4000K (min 80 CRI).

APPROVALS

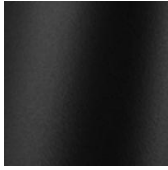
Damp Rated.

5 DESIGN OPTIONS

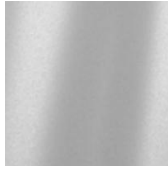
FIXTURE FINISH



White



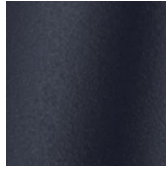
Black
Metallic -
Textured



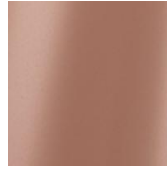
Silver
Metallic -
Textured



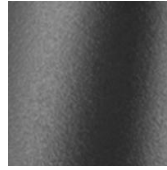
Gold Metallic
- Textured



Midnight
Blue Metallic
- Textured



Copper
Metallic



Charcoal
Metallic -
Textured



Bronze
Metallic -
Textured



Champagne
Metallic

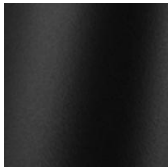


Red Metallic
- Textured

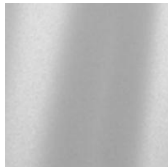
CANOPY FINISH



White



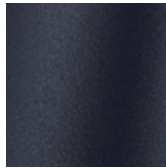
Black
Metallic -
Textured



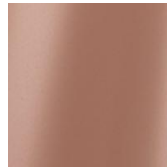
Silver
Metallic -
Textured



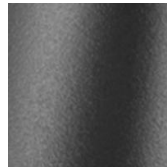
Gold Metallic
- Textured



Midnight
Blue Metallic
- Textured



Copper
Metallic



Charcoal
Metallic -
Textured



Bronze
Metallic -
Textured



Champagne
Metallic



Red Metallic
- Textured

6 HOW TO ORDER

1. LUMINAIRE

MQUG Pendant

2. DIRECTION

DT1 Direct

DT2 Direct/Indirect

3. SECTION TYPES

SCA16 Curve 16"	SCA30 Curve 30"	SCA42 Curve 42"	SCA48 Curve 48"
SCA54 Curve 54"	SCA72 Curve 72"	SCB28 Straight 28"	SCB36 Straight 36"
SCB47 Straight 47"	SCB72 Straight 72"	SCB95 Straight 95"	SCC01 Cross Section
SCD01 Corner Section	SCE01 T Section		

Select from one of the sections.

Each section is to be ordered as a separate line item.

4. END CAP

ENC00 Not required	ENC_ _ End Cap
---------------------------	-----------------------

5. LUMENS (DIRECT)

LPF017 175 lm/ft	LPF026 260 lm/ft	LPF035 350 lm/ft
-------------------------	-------------------------	-------------------------

6. LUMENS (INDIRECT)

LPG000 Not required	LPG017 175 lm/ft	LPG026 260 lm/ft	LPG035 350 lm/ft
----------------------------	-------------------------	-------------------------	-------------------------

7. CRI

CR80 CRI 80+	CR90 CRI 90+
---------------------	---------------------

8. CCT (DIRECT)

CTA27 2700K	CTA30 3000K	CTA35 3500K	CTA40 4000K
--------------------	--------------------	--------------------	--------------------

9. CCT (INDIRECT)

CTB00 Not required	CTB27 2700K	CTB30 3000K	CTB35 3500K
CTB40 4000K			

10. VOLTAGE

V1 120/277V	V2 240V ¹	V3 347V ²	V4 Low Voltage ³
--------------------	-----------------------------	-----------------------------	------------------------------------

¹ Not available in North American.

² Only available with DA01 dimming.

³ Only available with DA45 dimming.

11. DIMMING

DA01 0-10V Dimming 1.0%	DA02 0-10V Dimming 0.1% ¹	DA20 DALI Dimming 0.1% ¹	DA21 DALI Dimming 1.0% ¹
DA45 PoE ³			

¹ Not available with V3.

² Not available in North America.

³ Available with V4 only.

12. SUSPENSION

SS1 Vertical, Remote driver	SS3 Vertical, Integral driver
------------------------------------	--------------------------------------

13. FIXTURE FINISH

FA01 White	FA02 Black Metallic – Textured	FA20 Silver Metallic – Textured	FA25 Gold Metallic – Textured
FA44 Midnight Blue Metallic – Textured	FA45 Copper Metallic	FA46 Charcoal Metallic – Textured	FA47 Bronze Metallic – Textured
FA52 Champagne Metallic	FA53 Red Metallic – Textured		

14. CANOPY FINISH

CF01 White	CF02 Black Metallic – Textured	CF20 Silver Metallic – Textured	CF25 Gold Metallic – Textured
CF44 Midnight Blue Metallic – Textured	CF45 Copper Metallic	CF46 Charcoal Metallic – Textured	CF47 Bronze Metallic – Textured
CF52 Champagne Metallic	CF53 Red Metallic – Textured		

15. EMERGENCY SECTIONS

E0 Not required	E2 Emergency system – Remote ¹
------------------------	--

¹ Consult factory.

Note: a drawing will be required at time of ordering to determine the required location of the emergency sections.

16. CIRCUITS

CS1 Single circuit	CS2 Dual circuit
---------------------------	-------------------------

7 TECHNICAL DATA
SECTION TYPES

Select from one of the sections.

Each section is to be ordered as a separate line item.

Code	SCA16	SCA30	SCA42	SCA48	SCA54	SCA72
Section Type	Curved	Curved	Curved	Curved	Curved	Curved
Arc°	90°	90°	120°	120°	120°	90°
Radius	16"	30"	42"	48"	54"	72"
Length						
Wattage (Direct)	11	20	37	42	48	48
Delivered lms (Direct)	700	1350	2500	2850	3200	3200
LPW (Direct)	67	67	67	67	67	67
Wattage (Direct/Indirect)	21	40	74	84	95	96
Delivered lms (Direct/Indirect)	1400	2700	5000	5700	6400	6400
LPW (Direct/Indirect)	67	67	67	67	67	67
Code	SCB28	SCB36	SCB47	SCB72	SCB95	SCC01
Section Type	Straight	Straight	Straight	Straight	Straight	Cross
Arc°						
Radius						
Length	28"	36"	47"	72"	95"	23.5"
Wattage (Direct)	12	15	20	31	40	19
Delivered lms (Direct)	800	1025	1350	2050	2700	1300
LPW (Direct)	67	67	67	67	67	67
Wattage (Direct/Indirect)	23	31	40	61	81	39
Delivered lms (Direct/Indirect)	1600	2050	2700	4100	5400	2600
LPW (Direct/Indirect)	67	67	67	67	67	67
Code	SCD01	SCE01				
Section Type	Corner	T				
Arc°						
Radius						
Length	12"	35"				
Wattage (Direct)	10	23				

Code	SCD01	SCE01
Delivered lms (Direct)	650	1575
LPW (Direct)	67	67
Wattage (Direct/Indirect)	19	47
Delivered lms (Direct/Indirect)	1300	3150
LPW (Direct/Indirect)	67	67

8 PERFORMANCE DATA

Curved SCA 16	Lumens	Watts	LPW	Curved SCA 30	Lumens	Watts	LPW
LPF 017	350	5	70	LPF 017	675	10	70
LPF 026	550	8	68	LPF 026	1000	15	68
LPF 035	700	11	67	LPF 035	1350	20	67
Curved SCA 42	Lumens	Watts	LPW	Curved SCA 48	Lumens	Watts	LPW
LPF 017	1250	18	70	LPF 017	1400	20	70
LPF 026	1850	27	68	LPF 026	2125	31	68
LPF 035	2500	37	67	LPF 035	2850	42	67
Curved SCA 54	Lumens	Watts	LPW	Curved SCA 72	Lumens	Watts	LPW
LPF 017	1600	23	70	LPF 017	1600	23	70
LPF 026	2400	35	68	LPF 026	2400	35	68
LPF 035	3200	48	67	LPF 035	3200	48	67
Straight SCB 28	Lumens	Watts	LPW	Straight SCB 36	Lumens	Watts	LPW
LPF 017	400	6	70	LPF 017	500	7	70
LPF 026	600	9	68	LPF 026	775	11	68
LPF 035	800	12	67	LPF 035	1025	15	67
Straight SCB 47	Lumens	Watts	LPW	Straight SCB 72	Lumens	Watts	LPW
LPF 017	675	10	70	LPF 017	1025	15	70
LPF 026	1000	15	68	LPF 026	1550	23	68
LPF 035	1350	20	67	LPF 035	2050	31	67

MICRO SQUIGGLE™ – SUSPENDED CONTINUOUS

FULL SPECIFICATION SHEET

Straight SCB 95

	Lumens	Watts	LPW
LPF 017	1350	19	70
LPF 026	2025	30	68
LPF 035	2700	40	67

Corner SCD 01

	Lumens	Watts	LPW
LPF 017	325	5	70
LPF 026	500	7	68
LPF 035	650	10	67

Cross SCC 01

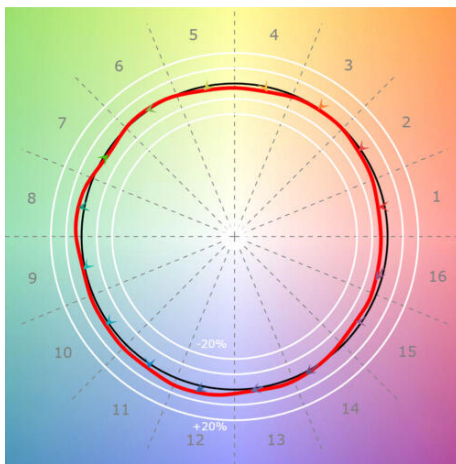
	Lumens	Watts	LPW
LPF 017	650	9	70
LPF 026	975	14	68
LPF 035	1300	19	67

T Section SCE 01

	Lumen/Ft	Watt/Ft	LPW
LPF 017	800	11	69
LPF 026	1175	17	68
LPF 035	1575	23	67

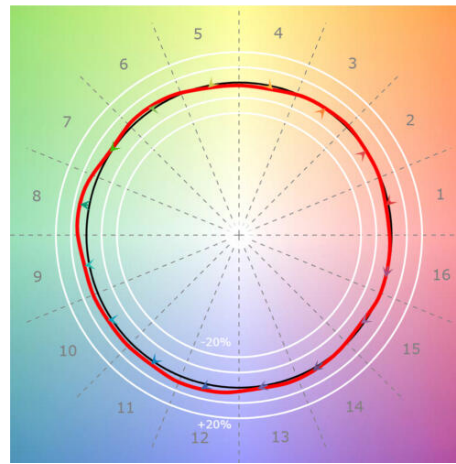
9 TM-30 DATA

CCT 2700K



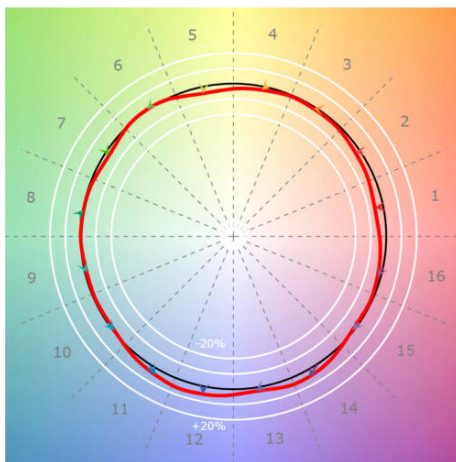
CRI(Ra)	94
CRI(R9)	58
TM30(Rf)	93
TM30(Rg)	99
Duv	0.0004

CCT 3000K



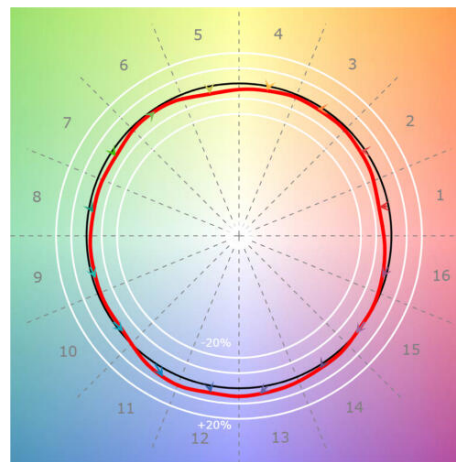
CRI(Ra)	94
CRI(R9)	75
TM30(Rf)	93
TM30(Rg)	102
Duv	-0.0001

CCT 3500K



CRI(Ra)	94
CRI(R9)	53
TM30(Rf)	91
TM30(Rg)	98
Duv	0.0009

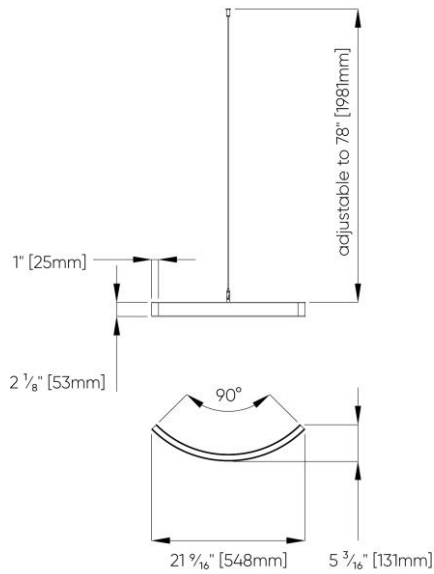
CCT 4000K



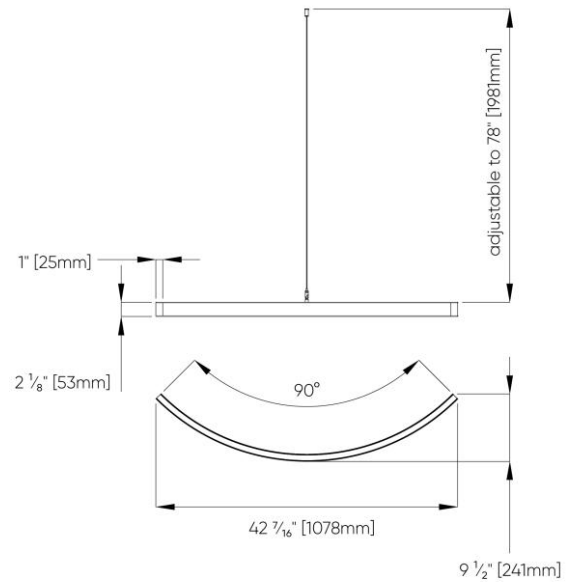
CRI(Ra)	92
CRI(R9)	50
TM30(Rf)	89
TM30(Rg)	97
Duv	0.0011

10 DIMENSIONAL DIAGRAMS

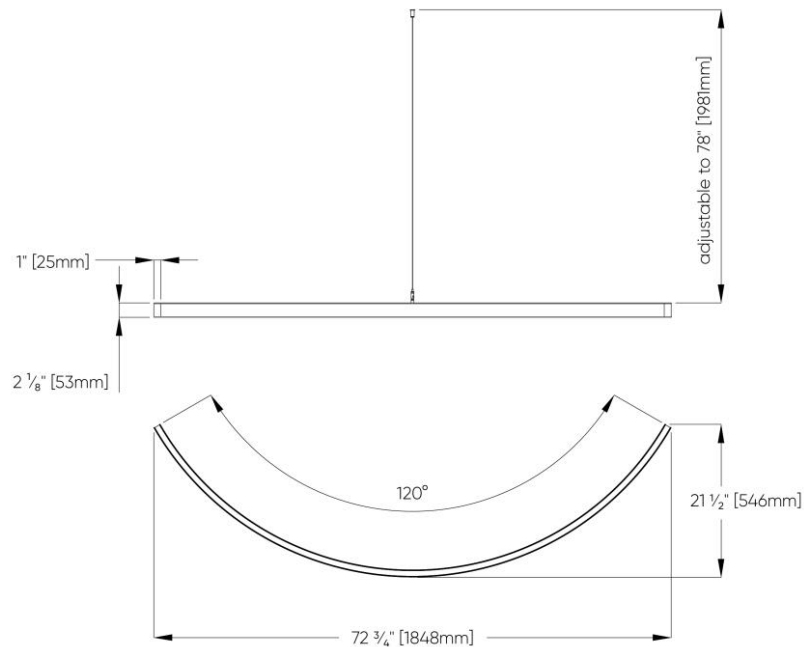
16" Radius



30" Radius

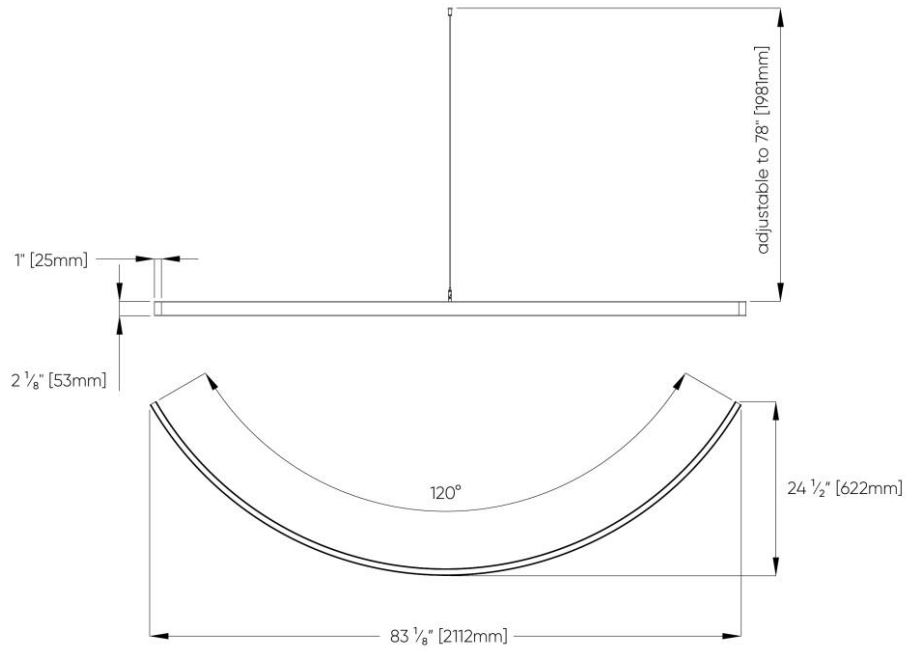


42" Radius

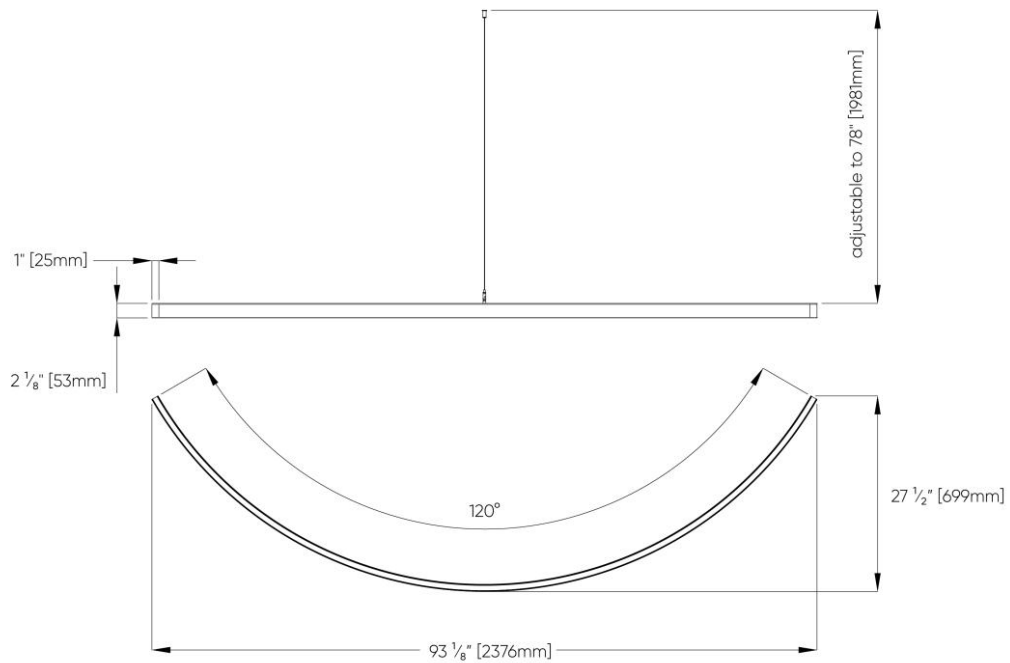


To determine the number of sections to be shipped, a final customer assembly drawing is required.
Custom shapes available.

48" Radius

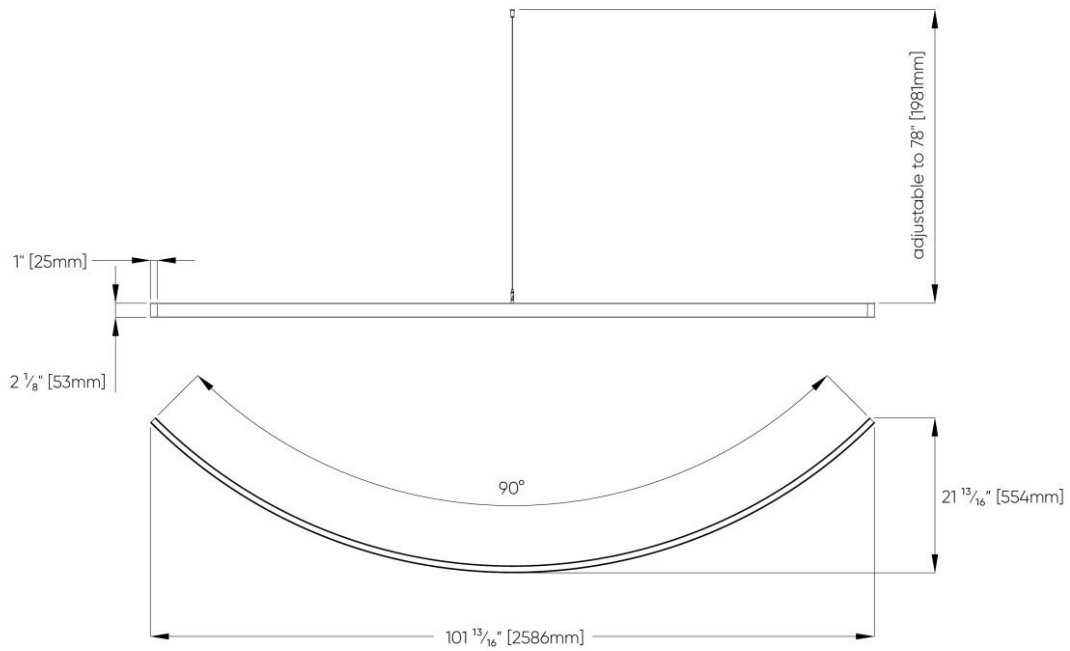


54" Radius



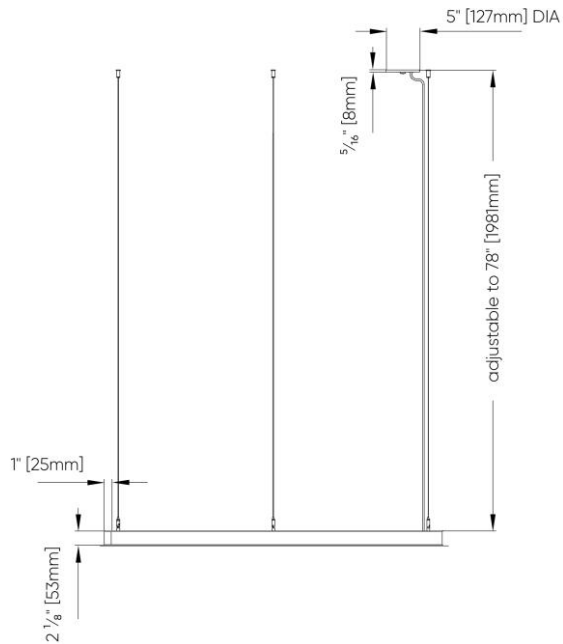
To determine the number of sections to be shipped, a final customer assembly drawing is required.
Custom shapes available.

72" Radius



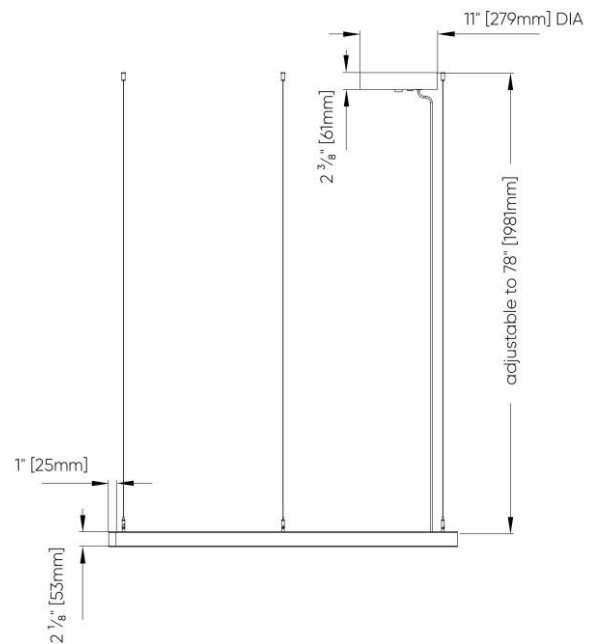
SS1

Vertical – Remote Driver



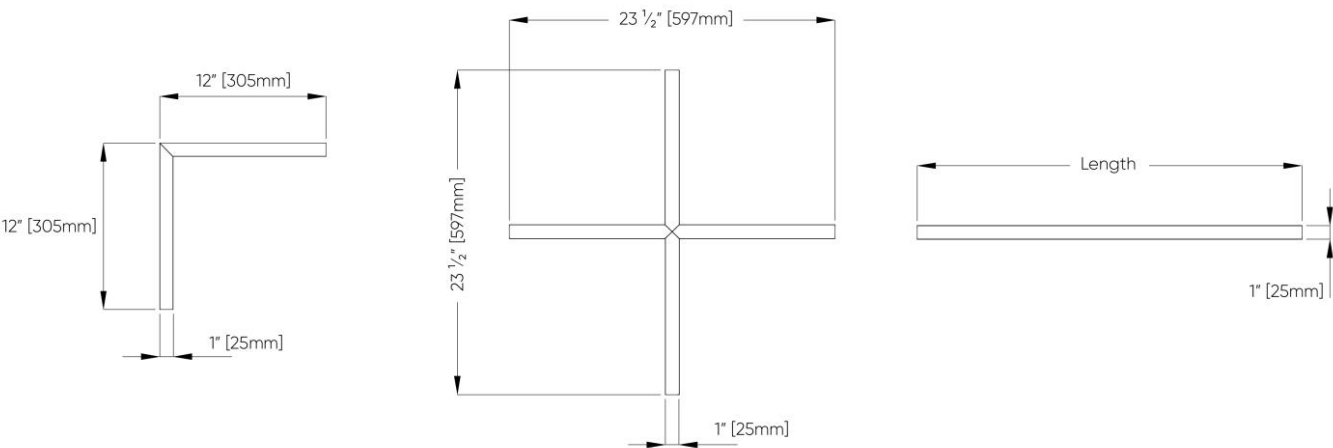
SS3

Vertical – Integral Driver

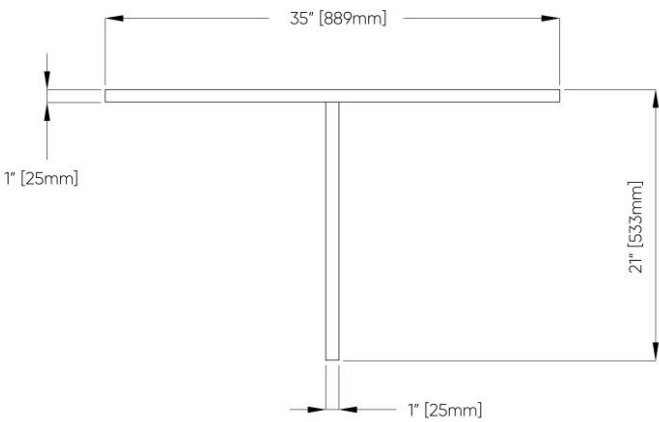


To determine the number of sections to be shipped, a final customer assembly drawing is required.
Custom shapes available.

Corner, Cross & Straight Sections



T Section



To determine the number of sections to be shipped, a final customer assembly drawing is required.
Custom shapes available.