

ARKO II™ - WALL

Project Name:

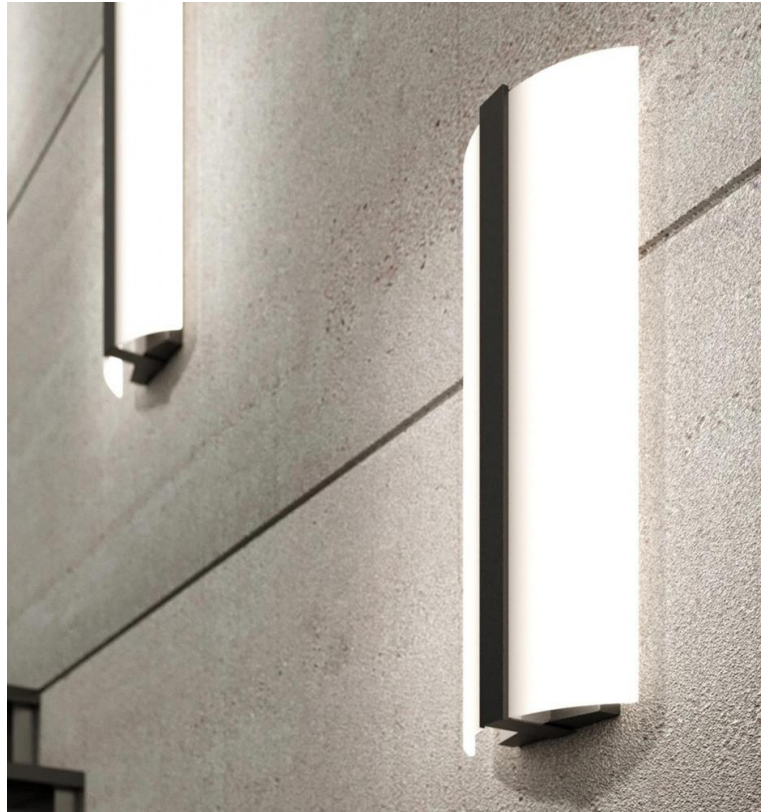
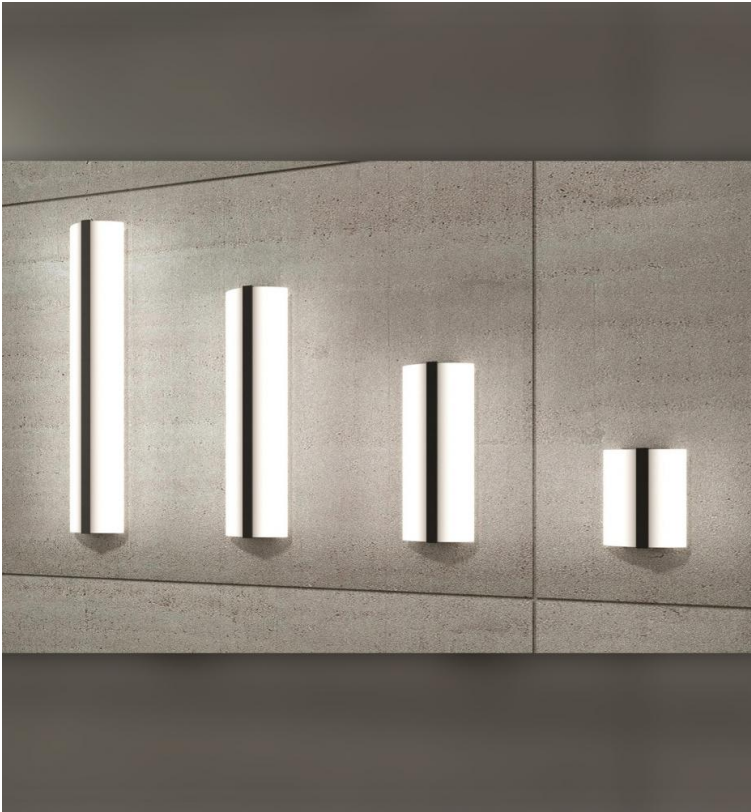
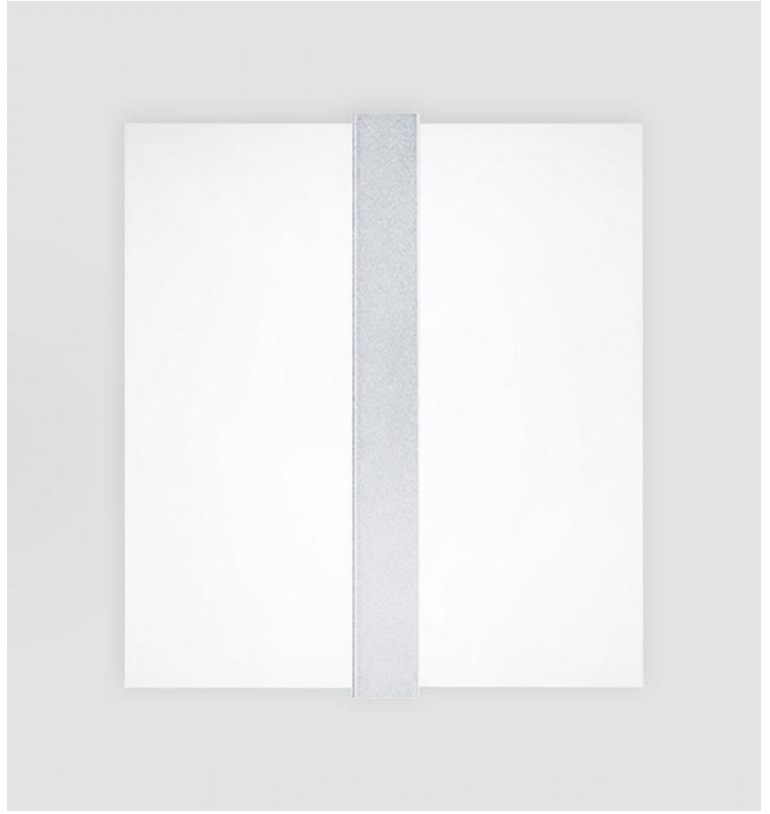
Fixture Type:

Fixture Code:

Quantities:



ARKO II™ - WALL



ARKO II™ - WALL

With a curved acrylic diffuser running up to 48" in height, **ARKO II** is designed to provide general illumination while accenting tall walls. Once illuminated, the central vertical bar is silhouetted, giving the illusion of a slender minimalist frame, ideal for complementing modern architecture.

GENERAL SPECIFICATION

Body and trim

Aluminium and steel.

Diffuser

Extruded, high impact opal acrylic.

Drivers

HPF, electronic for 120-277V (EU-240V). LED 0-10V dimming standard (1%). The driver is integral to the fixture.

Sensors

Consult factory regarding sensor compatibility.

Approvals

Damp rated.

Finish

Powder coated.

Luminaire orientation

Wall mounted.

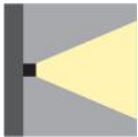
Delivered Lumens

Delivered lumens & LPW based on 4000K (min 80 CRI).

Reported L70 @25°C (77°F)

> 50,000 hrs.

MOUNTING & OPTICS



Wall



Declare

ARKO II™ - WALL

HOW TO ORDER

A. LUMINAIRE

301010 12", 500 lms
301030 36", 2000 lms

301013 12", 1000 lms
301040 48", 2400 lms

301020 24", 1000 lms

301023 24", 2000 lms

B. CCT

30 3000K (min 80 CRI)

35 3500K (min 80 CRI)

40 4000K (min 80 CRI)

C. FINISH

WH White

BL Black Metallic Textured

MS Silver Metallic Textured

MB Bronze Metallic Textured

TECHNICAL DATA

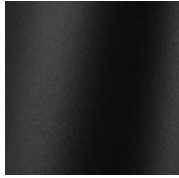
LUMINAIRE

Code	301010	301013	301020	301023	301030	301040
Power (LED)	10W	20W	20W	40W	40W	48W
Delivered lms	500	1000	1000	2000	2000	2400
LPW	50	50	50	50	50	50
Height (A)	12"	12"	24"	24"	36"	48"

FINISH



White



Black Metallic Textured



Silver Metallic Textured



Bronze Metallic Textured

APPROVALS

ADA



CE



IP20



ARKO II™ - WALL

DIMENSIONAL DIAGRAMS

