

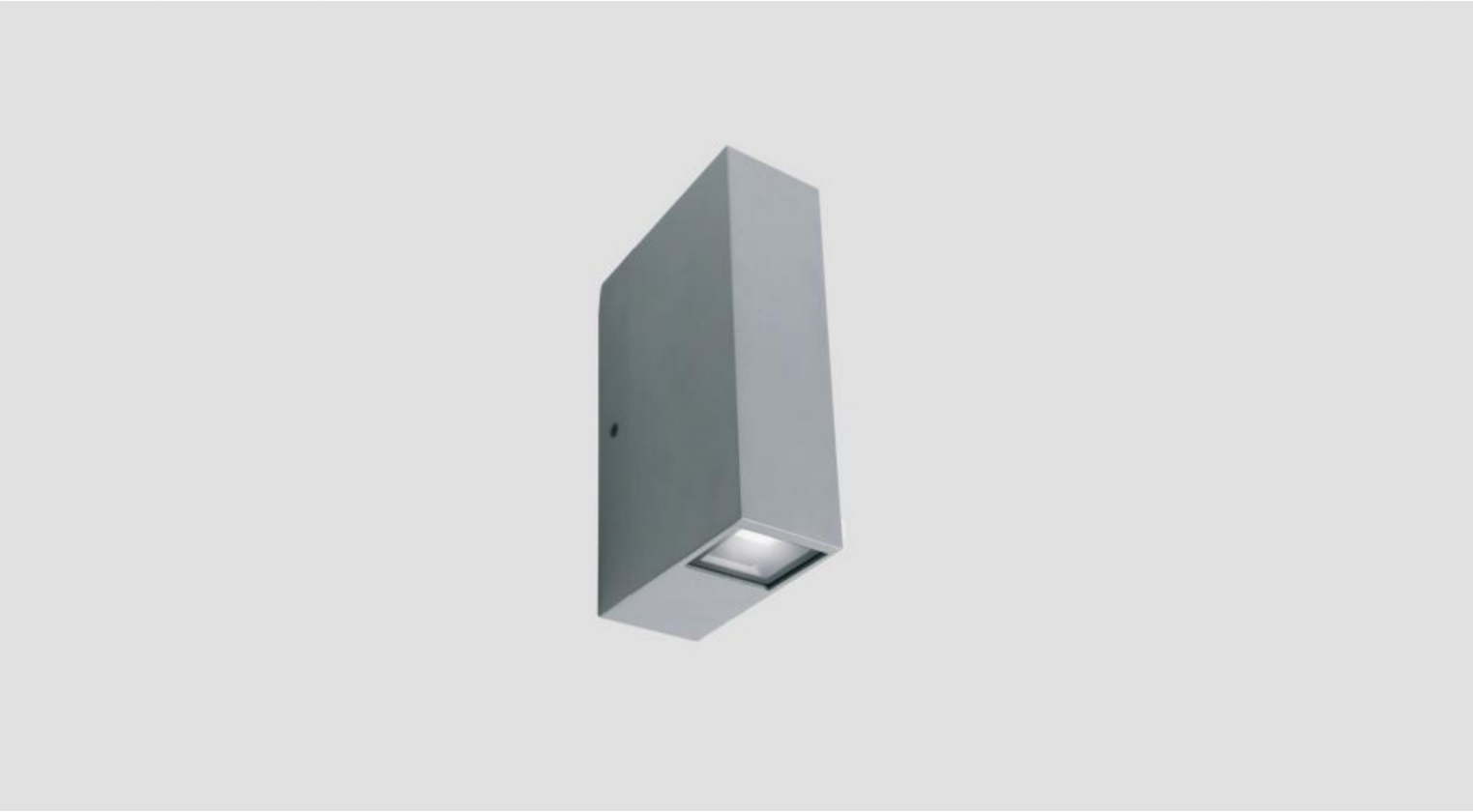
BLADE S™ - WALL SURFACE EXTERIOR

Project Name:

Fixture Type:

Fixture Code:

Quantities:



BLADE S™ - WALL SURFACE EXTERIOR

GENERAL SPECIFICATION

Body and trim

Die-cast aluminum.

Finish

Powder coated, Aluminum Grey or Graphite Satin.

Lens

Tempered safety glass.

Gaskets

Heat resistant silicone.

External screws

304 stainless steel.

Minimum Starting Temperature

-30°C.

Drivers for white LED

Integral, HPF electronic for 120-277V.

Mechanical

Mounts directly over a 2" x 3" electrical junction box (by others).

Delivered Lumens

Delivered lumens & LPW based on 3000K (min 80 CRI).

MOUNTING & OPTICS



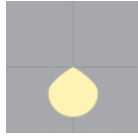
Ext-Wall Downlight



Ext-Wall Up/Down



Narrow



Flood

BLADE S™ - WALL SURFACE EXTERIOR

HOW TO ORDER

A. LUMINAIRE

661030 661030

661040 661040

661050 661050

661060 661060

661070 661070

B. CCT

30 3000K (min 80 CRI)

40 4000K (min 80 CRI)

C. FINISH

AL Aluminum Gray

GS Graphite Satin

D. DIMMING

DB Dimming 13W and higher, 0-10V, 10%

TECHNICAL DATA

LUMINAIRE

Code	661030	661040	661050	661060	661070
Beam	Wide	Wide/Wide	Wide/Narrow	Narrow/Narrow	Narrow
Beam °	101°	101°/101°	101°/3x33°	3x33°/3x33°	3x33°
Wattage	13W	11W + 11W	13W + 3W	3W + 3W	3W
Delivered lms	670	630 + 630	666 + 18	24 + 24	24

APPROVALS



BLADE S™ - WALL SURFACE EXTERIOR

DIMENSIONAL DIAGRAMS

