

BLOCK™ (OLD) - CEILING

Project Name:

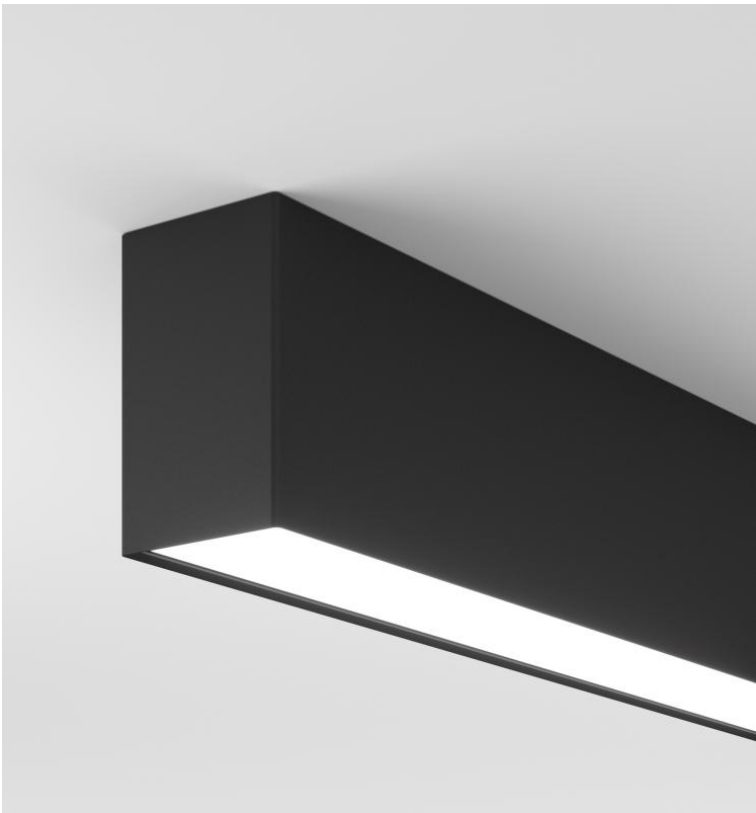
Fixture Type:

Fixture Code:

Quantities:



BLOCK™ (OLD) - CEILING



BLOCK™ (OLD) - CEILING

BLOCK, with its classic architectural form factor, stands as an unwavering workhorse among linear systems. It distinguishes itself on two fronts by setting new benchmarks in both lumen output and efficacy. Embodying precision, **BLOCK** fulfills its specification promises with finesse. Virtually every component offers multiple options, empowering designers to meticulously tailor luminaires to suit the unique demands of any space. **BLOCK** embodies the epitome of an architectural system, an unequivocal choice for those seeking adaptability across a spectrum of performance criteria and budget constraints.

GENERAL SPECIFICATION

Body

Aluminum.

Diffuser

Opal acrylic.

PoE

Can be integrated into your data network via Power over Ethernet (PoE) connectivity.

Tunable White

Tunable white available, consult factory.

Drivers

HPF electronic drivers for 120-277V, 347 (EU-240V). The driver is integral to the fixture housing.

Reported L70 @25°C (77°F)

> 60,000 hrs @ 1400 lumens/ft (4600 lumens/m)

Integral Emergency system

Emergency option provides a 1.5 hour (3 hours for EU) emergency lighting facility. The self contained system includes the inverter module, NiCad batteries, LED charge indicator and test switch (NA only). Not available with a 347V supply.

Design

US Design Patent Pending.

Finish

Powder coated.

Mechanical

Luminaires mount directly over J box (by others).

BIOS

For circadian lighting, consult factory.

Wood Slit Ceiling

For wood slit ceiling integration, consult factory.

Delivered lumens

Delivered lumens & LPW based on 4000K CRI 80+

Estimated L70 @25°C (77°F)

> 165,000 hrs @ 1400 lumens/ft (4600 lumens/m)

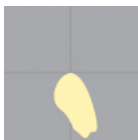
Approvals

Damp Rated.

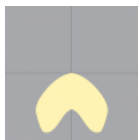
MOUNTING & OPTICS



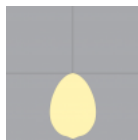
Ceiling Direct



Direct DD1



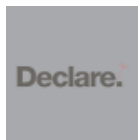
Direct DD2



Direct DD3



Bios



Declare



PoE

BLOCK™ (OLD) - CEILING

HOW TO ORDER

A. LUMINAIRE

BLFC1C Direct, 1400 lm/ft

All data shown at max values based on diffused light diffuser. Consult Performance Data download page for more detail. One power cord for every 50 linear feet.

B. LENGTH OF RUN

SFA _ _ _ _

Length of run is 4, 6, 8, 10 or 12 feet only, not available as a continuous run.

C. LENGTH

SL04 4ft	SL06 6ft	SL08 8ft	SL10 10ft
SL12 12ft			

D. LM/FT

LPF020 200 lm/ft	LPF040 400 lm/ft	LPF060 600 lm/ft	LPF080 800 lm/ft
LPF100 1000 lm/ft	LPF120 1200 lm/ft	LPF140 1400 lm/ft	

E. CRI

CR80 CRI 80+	CR90 CRI 90+
---------------------	---------------------

F. CCT

CTA30 3000K	CTA35 3500K	CTA40 4000K
--------------------	--------------------	--------------------

G. DIFFUSER

DD1 Asymmetric ¹	DD2 Batwing Diffuser	DD3 Diffused
------------------------------------	-----------------------------	---------------------

¹ When standing at the end view of the profile on the side where the power cord is installed, the asymmetric beam will aim to the right.

H. VOLTAGE

V1 120/277V	V2 240V ¹	V3 347V ²	V4 Low Voltage ³
--------------------	-----------------------------	-----------------------------	------------------------------------

¹ Not available in North America.

² Only available with DA01 dimming.

³ Only available with DA45 dimming.

I. DIMMING

DA01 0-10V Dimming 1.0%	DA02 0-10V Dimming 0.1% ¹	DA20 DALI Dimming 0.1% ¹	DA21 DALI Dimming 1.0% ¹
DA30 DSI/switchDim ²	DA45 PoE ³		

¹ Not available with V3.

² Not available in North America.

³ Only available with V4.

BLOCK™ (OLD) - CEILING

J. FINISH

FA01 White - Textured	FA02 Black Metallic - Textured	FA20 Silver Metallic - Textured	FA25 Gold Metallic - Textured
FA27 Wood grain - Light Cherry ¹	FA28 Wood grain - Dark Walnut ¹	FA44 Midnight Blue Metallic - Textured	FA45 Copper Metallic
FA46 Charcoal Metallic - Textured	FA47 Bronze Metallic - Textured	FA52 Champagne Metallic	FA53 Red Metallic - Textured

¹ Longer than normal lead times may apply, consult factory.

K. EMERGENCY

E0 Not required	E1 Emergency system - Integral ¹	E3 Emergency generated circuit - Remote ¹
------------------------	--	---

¹¹ Available upon request, consult factory for details. Not available with 347V.

BLOCK™ (OLD) - CEILING

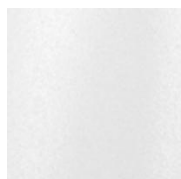
TECHNICAL DATA

LUMINAIRE

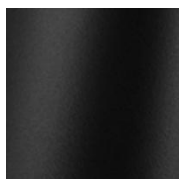
All data shown at max values based on diffused light diffuser. Consult Performance Data download page for more detail. One power cord for every 50 linear feet.

Code	BLFC1C
Light Direction	Direct
Lms/Ft	1400
Watts/Ft	13
LPW	136

FIXTURE FINISH



White - Textured



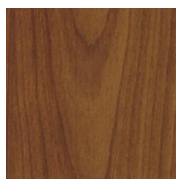
Black Metallic - Textured



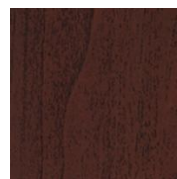
Silver Metallic - Textured



Gold Metallic - Textured



Wood grain - Light Cherry ¹



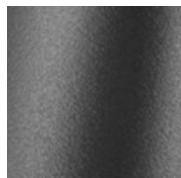
Wood grain - Dark Walnut ¹



Midnight Blue Metallic - Textured



Copper Metallic



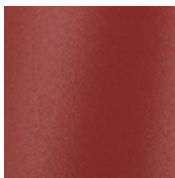
Charcoal Metallic - Textured



Bronze Metallic - Textured



Champagne Metallic



Red Metallic - Textured

¹ Longer than normal lead times may apply, consult factory.

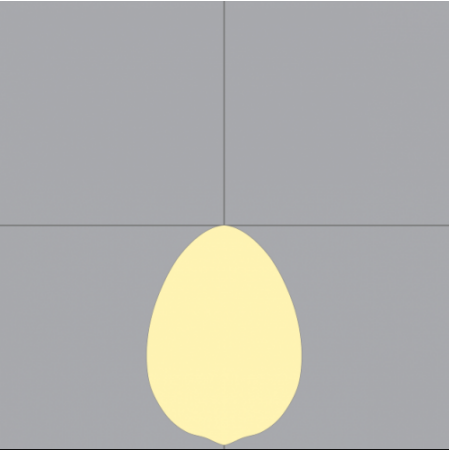
APPROVALS



BLOCK™ (OLD) - CEILING

PERFORMANCE DATA

DIRECT DIFFUSED (DD3)

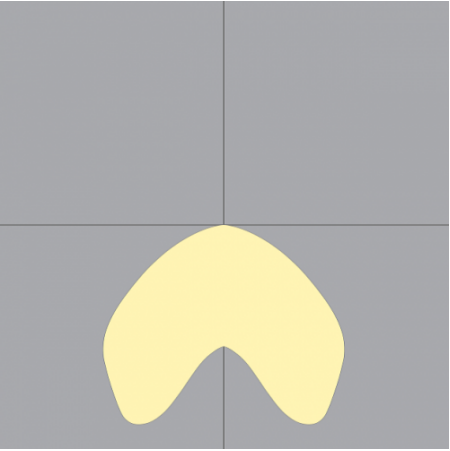


LUMEN/FT
1400
1200
1000
800
600
400
200

WATT/FT
13
11
9
7
5
3
2

LPW
116
120
123
126
130
134
136

DIRECT BATWING (DD2)

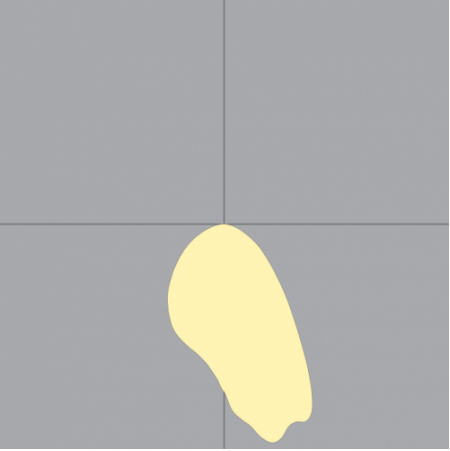


LUMEN/FT
1400
1200
1000
800
600
400
200

WATT/FT
13
11
9
7
5
3
2

LPW
116
119
122
125
129
132
136

DIRECT ASYMMETRIC (DD1)



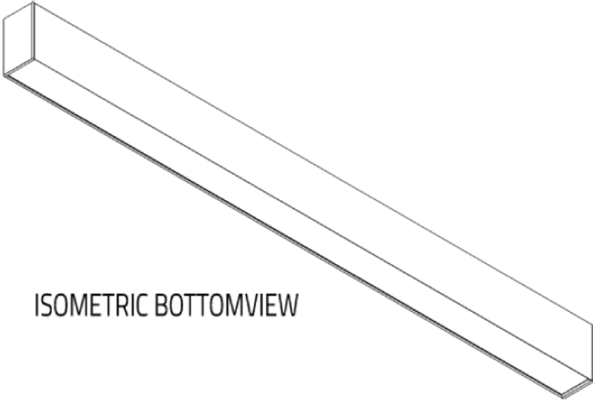
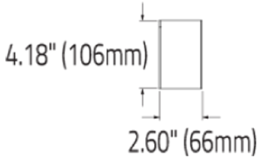
LUMEN/FT
1400
1200
1000
800
600
400
200

WATT/FT
13
11
9
7
5
3
2

LPW
114
118
121
124
128
131
136

BLOCK™ (OLD) - CEILING

DIMENSIONAL DIAGRAMS



ISOMETRIC BOTTOMVIEW



Bottom View

Top View
(Asymmetric Light Direction)

