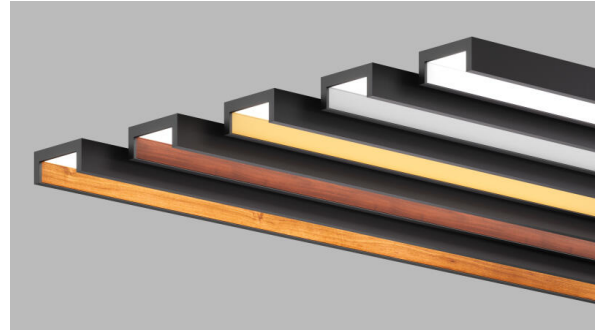




BRIDGE™

SHORT SPECIFICATION SHEET



Fixture Type

Fixture Code

Quantities

1 HOW TO ORDER

1. LUMINAIRE

BRID1P Direct

BRID2P Direct/Indirect

One power cord for every 50 linear feet.

2. LENGTH OF RUN

Length of run is 4, 6, 8, 10 or 12ft only, not available as a continuous run.

SFA_ _ _ _

Length of run is 4, 6, 8, 10 or 12ft only, not available as a continuous run.

3. LENGTH

SL04 4ft

SL06 6ft

SL08 8ft

SL10 10ft

SL12 12ft

4. DISTRIBUTION

DR0 Direct 100%

DR1 Direct 25% / Indirect 75%

DR3 Direct 60% / Indirect 40%

5. LUMENS/FT

| | | | |
|---|---|--|---|
| LPF040 400 lm/ft ¹ | LPF060 600 lm/ft ¹ | LPF080 800 lm/ft ^{1 2 3} | LPF100 1000 lm/ft ^{2 3} |
| LPF120 1200 lm/ft ^{2 3} | LPF140 1400 lm/ft ^{2 3} | | |

¹ 100% direct light

² 25% direct light / 75% indirect light

³ 60% direct light / 40% indirect light

6. CRI

| | |
|---------------------|---------------------|
| CR80 CRI 80+ | CR90 CRI 90+ |
|---------------------|---------------------|

7. CCT

| | | | |
|--------------------|--------------------|--------------------|--------------------|
| CTA27 2700K | CTA30 3000K | CTA35 3500K | CTA40 4000K |
|--------------------|--------------------|--------------------|--------------------|

8. VOLTAGE

| | | | |
|--------------------|-----------------------------|-----------------------------|------------------------------------|
| V1 120/277V | V2 240V ¹ | V3 347V ² | V4 Low Voltage ³ |
|--------------------|-----------------------------|-----------------------------|------------------------------------|

¹ Not available in North America.

² Only available with DA01 dimming.

³ Only available with DA45 dimming.

9. DIMMING

| | | | |
|--|---|--|--|
| DA01 0-10V Dimming 1.0% | DA02 0-10V Dimming 0.1% ¹ | DA20 DALI Dimming 0.1% ¹ | DA21 DALI Dimming 1.0% ¹ |
| DA30 DSI/switchDim ² | DA45 PoE ³ | | |

¹ Not available with V3.

² Not available in North America.

³ Only available with V4.

10. CEILING TYPE

| | |
|-------------------------------------|-------------------------------------|
| H1 Hard ceiling ² | G1 Grid ceiling ¹ |
|-------------------------------------|-------------------------------------|

The cost for the canopies, power cables, connections mechanisms and endcaps for the fixture has been added to these items.

¹ Combo kit provided includes installation to T-bar and through tile mount. Available with remote box only.

² Designed for drywall ceilings.

11. DRIVER LOCATION

DT01 Recessed ceiling box with integrated canopy ¹ **DT02** Remote Box ²

¹ Recessed ceiling box with integrated canopy is not available with 12ft and 1400 lm/ft.

² Grid ceiling available with Remote Box only.

12. SUSPENSION

HLA03 3ft cable suspension **HLA06** 6ft cable suspension **HLA09** 9ft cable suspension

* Note: Special order available on lengths over 9ft and may be subject to longer lead times, consult factory.

13. FIXTURE FINISH

FA01 White – Textured **FA02** Black Metallic – Textured **FA20** Silver Metallic – Textured

14. INSIDE TRIM FINISH

FB01 White **FB20** Silver Metallic Textured **FB27** Wood grain – Light Cherry ¹ **FB28** Wood grain – Dark Walnut ¹
FB59 Gold Anodized

¹ Longer lead times may apply, consult factory.

15. CANOPY FINISH

CF01 White – Textured **CF02** Black Metallic – Textured **CF20** Silver Metallic – Textured

16. EMERGENCY (REMOTE ONLY)

E0 Not required **E2** Emergency system – Remote

17. SENSORS

Compatible with Avi-On, Casambi, Enlighted, Lutron Vive, nLight, NX Lighting Controls, Osram, Philips, and others. Consult factory.