

CRISTAL SML™ - INGROUND EXTERIOR

Project Name:

Fixture Type:

Fixture Code:

Quantities:

CRISTAL SML™ - INGROUND EXTERIOR

GENERAL SPECIFICATION

Housing Die-cast aluminum. Walk over 1000Kg/2200lbs.	External Screws Stainless steel.
Lens 6mm/0.25" sandblasted glass with clear windows for LEDs.	Gaskets One piece silicone.
Drivers HPF, electronic for 120-277V (EU-240V).	Minimum Starting Temperature -30°C.
Conduit entry PG11 gland for 11mm/0.625" DIA cable.	Recessed housing Molded polypropylene, gray, with stainless mounting trim. Specify as a separate line item.
Delivered Lumens Delivered lumens and LPW based on 3000K (min 80 CRI).	

OPTICS & FEATURES



Ext-Inground

CRISTAL SML™ - INGROUND EXTERIOR

HOW TO ORDER

A. LUMINAIRE

810108 810108

810109 810109

810107 810107

B. CCT

30 3000K (min 80 CRI)

40 4000K (min 80 CRI)

C. RECESSED HOUSING (REQUIRED)

810900 Recessed Housing for Wall Installation

810901 Recessed Housing for Inground Installation

TECHNICAL DATA

LUMINAIRE

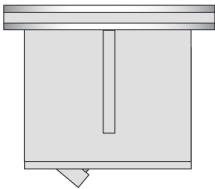
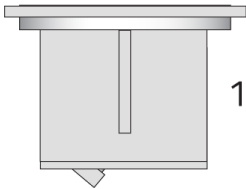
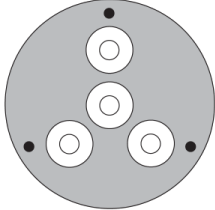
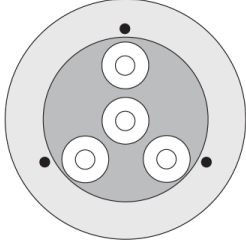
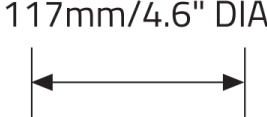
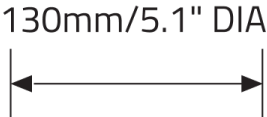
Code	810108	810109	810107
Power	7W	7W	7W
Type	Glass Only	Glass Only	Glass Only
Distribution	Wall	Inground 10°	Inground 36°
Delivered lms	396	466	466

APPROVALS



CRISTAL SML™ - INGROUND EXTERIOR

DIMENSIONAL DIAGRAMS



110mm/4.3"

SS Bezel

Glass only