

CYLINDER EX™

Project Name:

Fixture Type:

Fixture Code:

Quantities:



# CYLINDER EX™

The **CYLINDER EX** series advances exterior lighting utility with its precision-engineered adjustable optics, meticulously designed to focus light on critical areas like pathways and challenging installation spots. This functionality not only bolsters safety by illuminating essential zones but also enriches the scenic impact. Featuring a gimbal with a +/- 30° tilting range that locks at 10° increments, and an additional 180° rotation on stem and ceiling mount, allowing for precise angling, CYLINDER EX incorporates ten advanced optics utilizing three LED technologies—Multi-lens Array, Chip on Board (COB), and Area Optics—to tackle diverse lighting challenges. The 6-inch diameter cylinder is offered in a suite of mounting options, including ceiling, stem, and wall mount with three bracket styles. The Classic bracket fits standard 4-inch electrical boxes, while the Narrow Full and Narrow Half brackets are designed for switch boxes, maintaining the cylinder's minimalist design. For installations where conduit wire routing is employed, a sleekly designed conduit accessory box is available, facilitating easy integration before or after conduit placement. Committed to ecological responsibility, CYLINDER EX is Dark Sky Friendly when the direct light option is paired with a CCT of 3000K or less. This ensures minimal light spill and skyglow, safeguarding the nocturnal habitat and contributing to a greener planet.

## GENERAL SPECIFICATION

### Housing

Die-cast and extruded aluminum.

### Lens

Clear glass.

### Drivers

HPF, electronic for 120-277V (EU-240V).

### Dark Sky Friendly

Dark Sky Friendly if ordered with 3000K CCT and below. Direct only.

### BUG Rating (Direct Light):

Type II, III, IV: B1-U0-G1

Type V: B3-U0-G0

### Hardware

Vandal proof hardware included.

### Delivered Lumens

Delivered lumens & LPW based on 4000K (min 80 CRI).

### External Screws

Stainless steel.

### Finish

Powder coated.

### Minimum Starting Temperature

-30°C.

### Turtle Friendly

Amber (590nm) for Turtle Friendly compliance.

### Mounting

The Ceiling, Pendant and Wall Classic versions mount to a 4"x4" junction box (supplied by others).

The Wall Narrow versions mount to a 2"x4" switch box (supplied by others).

Conduit mount is an option for Wall and Ceiling versions, consult factory.

The pendant allows for a sway of up to 42 degrees in any direction.

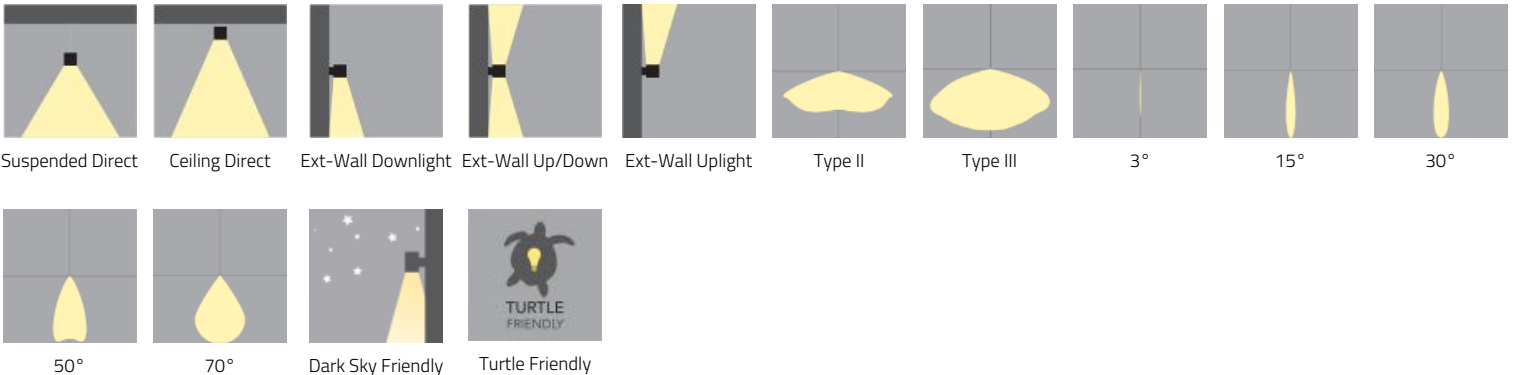
### Lens

Shatterproof lens available, consult factory.

### REPORTED L70 @25°C (77°F)

> 60,000 hrs

## MOUNTING & OPTICS



# CYLINDER EX™

## HOW TO ORDER

### A. LUMINAIRE

**CYXW** Wall

**CYXC** Ceiling

**CYXP** Pendant <sup>1</sup>

Conduit mount is an option for wall and ceiling versions, consult factory.

<sup>1</sup> Pendant is stem mount only.

### B. DIAMETER

**DR06** 6"

### C. DIRECTION

**DT1** Direct 10" housing <sup>1 2</sup>

**DT2** Direct/Indirect 14" housing <sup>3</sup>

<sup>1</sup> Available for wall, ceiling, and pendant.

<sup>2</sup> Wall mount direct only can be installed as indirect only.

<sup>3</sup> Available for wall mount only.

Direct will have a 10" tall housing

Direct/Indirect will have a 14" tall housing

### D. LIGHT SOURCE

**DN01** LEDs / Multi-Array Optics

**DN02** COB / Reflector

All data based on max output and nominal values.

### E. CRI

**CR00** Not required (For Amber Light)

**CR80** CRI 80+

### F. CCT

**CTA27** 2700K <sup>1</sup>

**CTA30** 3000K

**CTA35** 3500K

**CTA40** 4000K

**CTA62** Amber (Turtle Friendly) <sup>2</sup>

<sup>1</sup> Longer than normal lead times may apply, consult factory.

<sup>2</sup> Available for LED Direct only with 50° direct distribution.

### G. DISTRIBUTION DIRECT

**BAT2** Type II <sup>1</sup>

**BAT3** Type III <sup>1</sup>

**BA03** 3° <sup>2</sup>

**BA15** 15° <sup>3</sup>

**BA30** 30° <sup>3</sup>

**BA50** 50° <sup>4</sup>

**BA70** 70° <sup>3</sup>

<sup>1</sup> Available for Wall mount, Direct, and LEDs / Multi-Array Optics distribution, not recommended for Indirect use. Available with Direct lumens of 2000 and 3000, not 4000.

<sup>2</sup> Available for LEDs / Multi-Array Optics distribution and Wall mount. There may be a +/- 250K variance in color temperature. The head is not adjustable.

<sup>3</sup> Available for LEDs / Multi-Array Optics distribution.

<sup>4</sup> Available for LEDs / Multi-Array Optics distribution and COB / Reflector.

### H. DISTRIBUTION INDIRECT

**BB00** Not required

**BB03** 3° <sup>1</sup>

**BB15** 15° <sup>2</sup>

**BB30** 30° <sup>2</sup>

**BB50** 50° <sup>3</sup>

**BB70** 70° <sup>2</sup>

<sup>1</sup> Available for LEDs, Indirect and Wall version only. There may be a +/- 250K variance in color temperature. The head is not adjustable.

<sup>2</sup> Available for LEDs / Multi-Array Optics distribution.

<sup>3</sup> Available for LEDs / Multi-Array Optics distribution and COB / Reflector.



# CYLINDER EX™

## I. LUMENS DIRECT

**LMA0005** 59 lms<sup>1</sup>

**LMA0040** 400 lms<sup>2</sup>

**LMA0200** 2000 lms

**LMA0300** 3000 lms

**LMA0400** 4000 lms<sup>3</sup>

<sup>1</sup> Available for 3° Direct distribution.

<sup>2</sup> Available for Amber (Turtle Friendly) light.

<sup>3</sup> Available for Direct only, 15°, 30°, 50°, and 70°.

## J. LUMENS INDIRECT

**LMB0000** Not required

**LMB0005** 59 lms<sup>1</sup>

**LMB0200** 2000 lms

**LMB0300** 3000 lms

<sup>1</sup> Available for 3° Indirect distribution.

## K. VOLTAGE

**V1** 120/277V

**V2** 240V<sup>1</sup>

<sup>1</sup> Not available in North America

## L. DIMMING

**DA01** 0-10V Dimming 1.0%

**DA11** 0-10V Dimming 1.0% - Arctic<sup>1 3</sup>

**DA12** 0-10V Dimming 1.0% - Desert<sup>2 3</sup>

**DA21** DALI Dimming 1.0%<sup>3</sup>

<sup>1</sup> Capable of operating at -30°C (-22°F) to ambient temperature

<sup>2</sup> Capable of operating at +50°C (+122°F) ambient temperature

<sup>3</sup> Consult factory

## M. MOUNTING BRACKET

**MB0** Not required

**MB1** Narrow - Full<sup>1 2</sup>

**MB2** Narrow - Standard<sup>2</sup>

**MB3** Classic - Standard<sup>3</sup>

\* Mounting bracket finish to match fixture finish.

<sup>1</sup> Only available with Direct/Indirect

<sup>2</sup> The Wall Narrow versions mount to a 2"x4" switch box (supplied by others).

<sup>3</sup> The Wall Classic version mount to a 4"x4" junction box (supplied by others).

## N. SUSPENSION (STEM MOUNT)

**SL00** Not required

**SL03** 3ft

Stems will always be Black Metallic Textured finished. Custom lengths available, consult factory for details.

## O. FIXTURE FINISH

**FA01** White

**FA02** Black Metallic - Textured

**FA20** Silver Metallic - Textured

**FA27** Wood grain - Light Cherry<sup>1</sup>

**FA28** Wood grain - Dark Walnut<sup>1</sup>

**FA46** Charcoal Metallic - Textured

**FA47** Bronze Metallic - Textured

<sup>1</sup> Longer than normal lead times may apply consult factory.

## P. BEZEL FINISH

**FB01** White

**FB02** Black Metallic - Textured

**FB20** Silver Metallic - Textured

**FB46** Charcoal Metallic - Textured

**FB47** Bronze Metallic - Textured

Shatterproof lens available, consult factory.



# CYLINDER EX™

## Q. CANOPY & STEM FINISH

**FC00** Not required

**FC01** White

**FC02** Black Metallic - Textured

**FC20** Silver Metallic - Textured

**FC46** Charcoal Metallic - Textured

**FC47** Bronze Metallic - Textured

# CYLINDER EX™

## TECHNICAL DATA

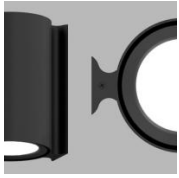
### LIGHT SOURCE

All data based on max output and nominal values.

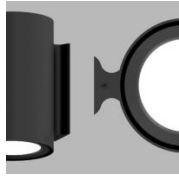
Code	DN01	DN02
Light Source	LED	COB
Max Wattage	37	34
Max Delivered lms	4000	4000
Max LPW	125	124

## MOUNTING BRACKET

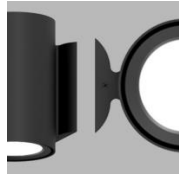
Not required



Narrow - Full <sup>1 2</sup>



Narrow - Standard <sup>2</sup>



Classic - Standard <sup>3</sup>

\* Mounting bracket finish to match fixture finish.

<sup>1</sup> Only available with Direct/Indirect

<sup>2</sup> The Wall Narrow versions mount to a 2"x4" switch box (supplied by others).

<sup>3</sup> The Wall Classic version mount to a 4"x4" junction box (supplied by others).

## FIXTURE FINISH



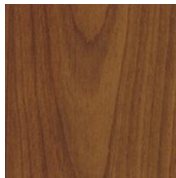
White



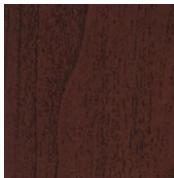
Black Metallic -  
Textured



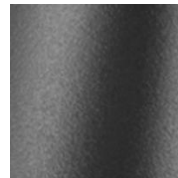
Silver Metallic -  
Textured



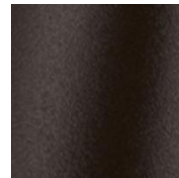
Wood grain - Light  
Cherry <sup>1</sup>



Wood grain - Dark  
Walnut <sup>1</sup>



Charcoal Metallic -  
Textured



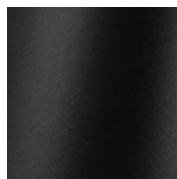
Bronze Metallic -  
Textured

<sup>1</sup> Longer than normal lead times may apply consult factory.

## BEZEL FINISH



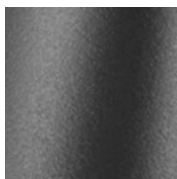
White



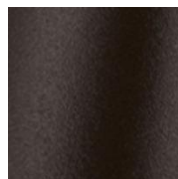
Black Metallic -  
Textured



Silver Metallic -  
Textured



Charcoal Metallic -  
Textured



Bronze Metallic -  
Textured

Shatterproof lens available, consult factory.

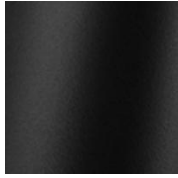
# CYLINDER EX™

## CANOPY & STEM FINISH

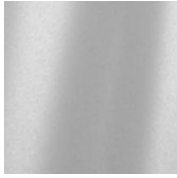
Not required



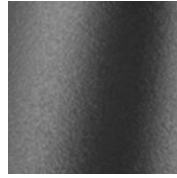
White



Black Metallic - Textured



Silver Metallic - Textured



Charcoal Metallic - Textured



Bronze Metallic - Textured

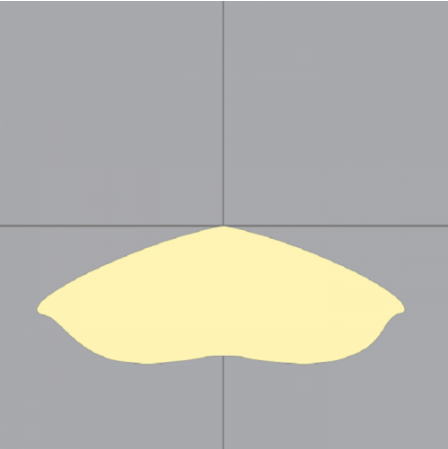
## APPROVALS



# CYLINDER EX™

## PERFORMANCE DATA

### TYPE II BEAM

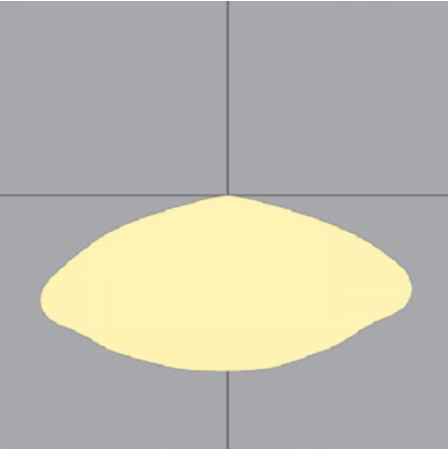


WATTS
19
34

LUMENS
2000
3000

LPW
112
97

### TYPE III BEAM

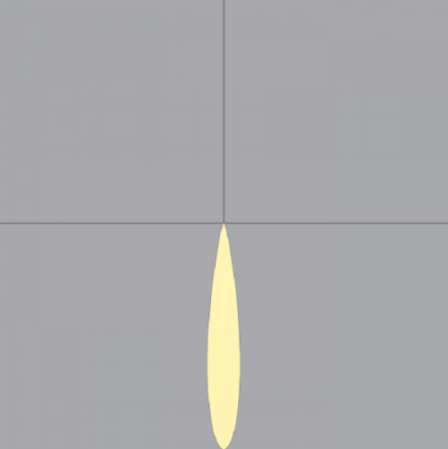


WATTS
19
34

LUMENS
2000
3000

LPW
109
94

### 15° BEAM, TYPE V - LED



WATTS
16
25
37

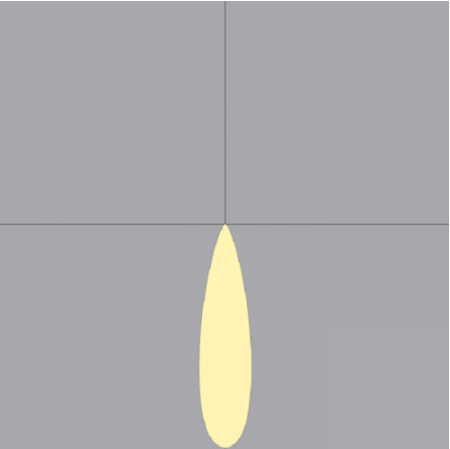
LUMENS
2000
3000
4000

LPW
123
116
110



# CYLINDER EX™

## 30° BEAM, TYPE V - LED

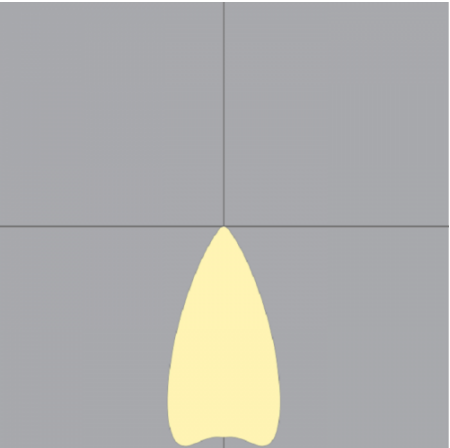


WATTS
16
25
37

LUMENS
2000
3000
4000

LPW
125
118
112

## 50° BEAM, TYPE V - LED

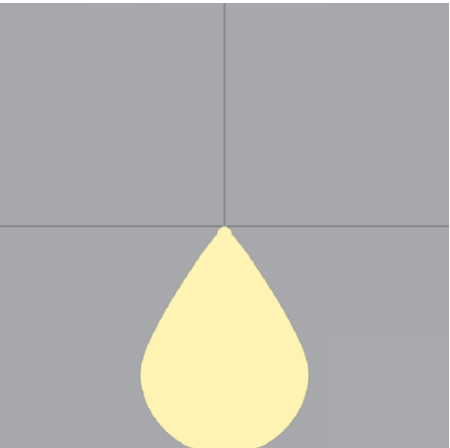


WATTS
16
25
37

LUMENS
2000
3000
4000

LPW
119
112
106

## 70° BEAM, TYPE V - LED



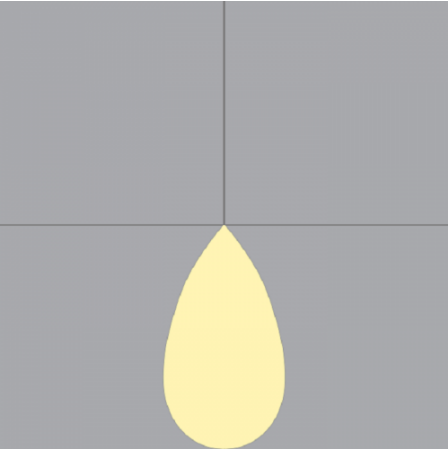
WATTS
16
25
37

LUMENS
2000
3000
4000

LPW
119
113
107

# CYLINDER EX™

50° BEAM, TYPE V - COB



WATTS
20
27
34

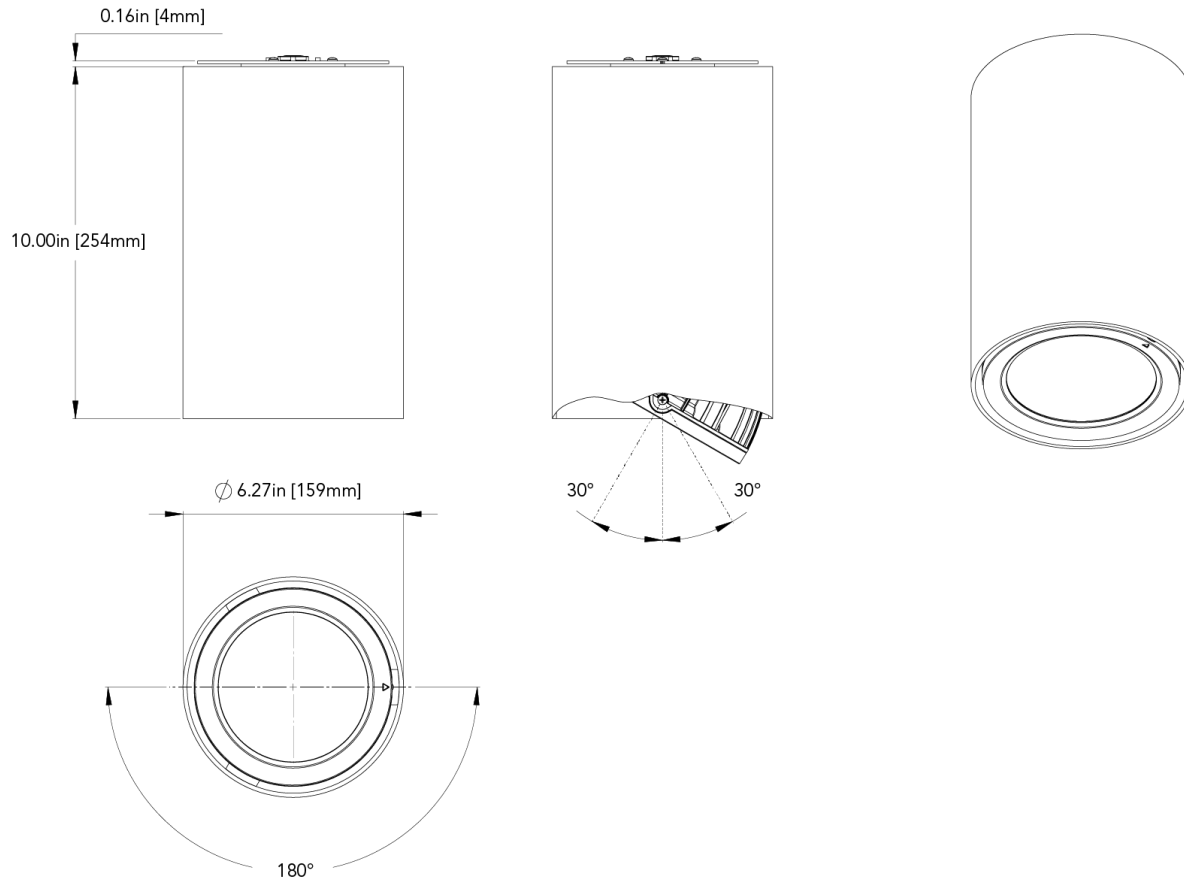
LUMENS
2000
3000
4000

LPW
124
121
117

# CYLINDER EX™

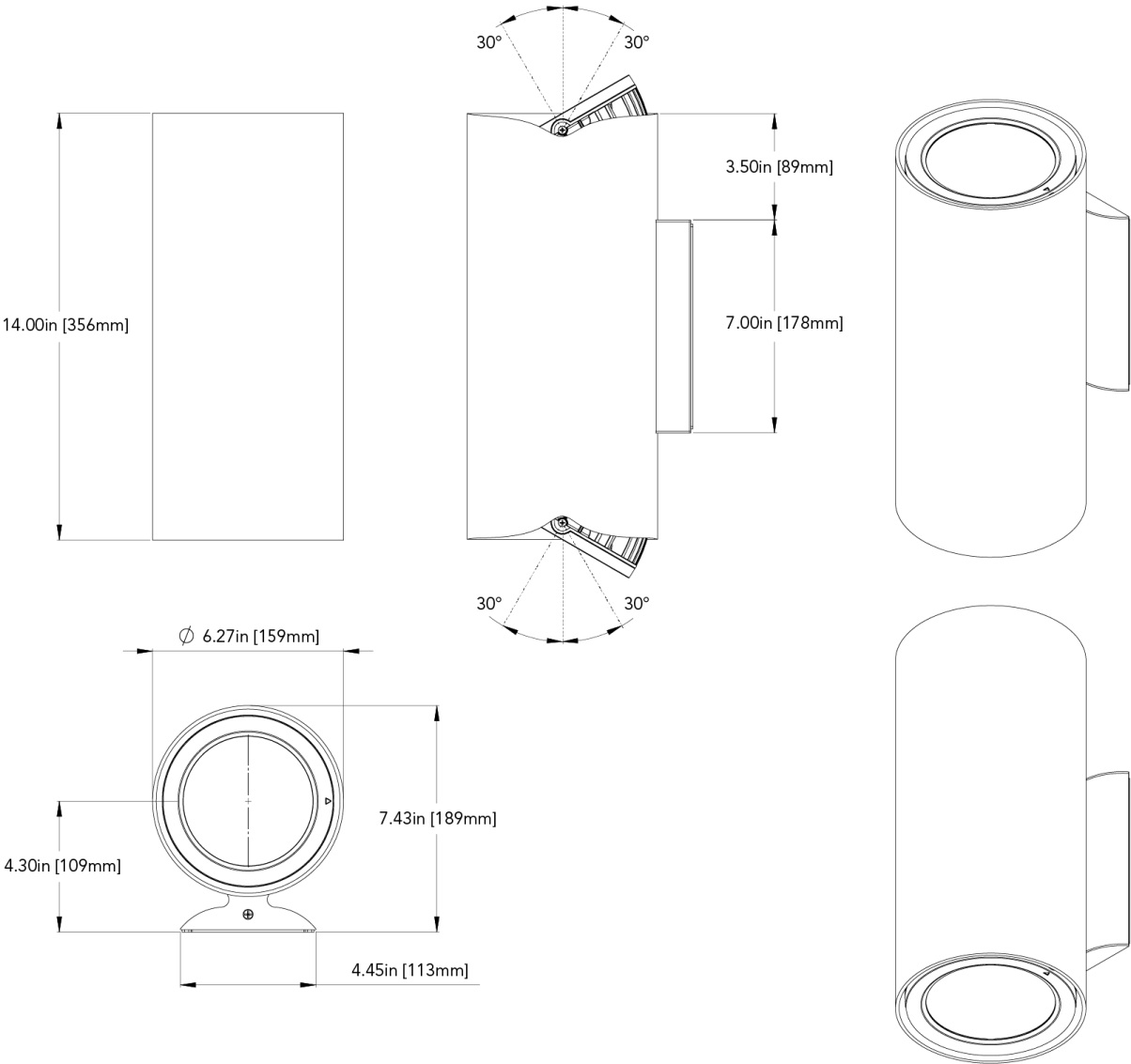
## DIMENSIONAL DIAGRAMS

### 6"- Ceiling Surface Mount Direct Only



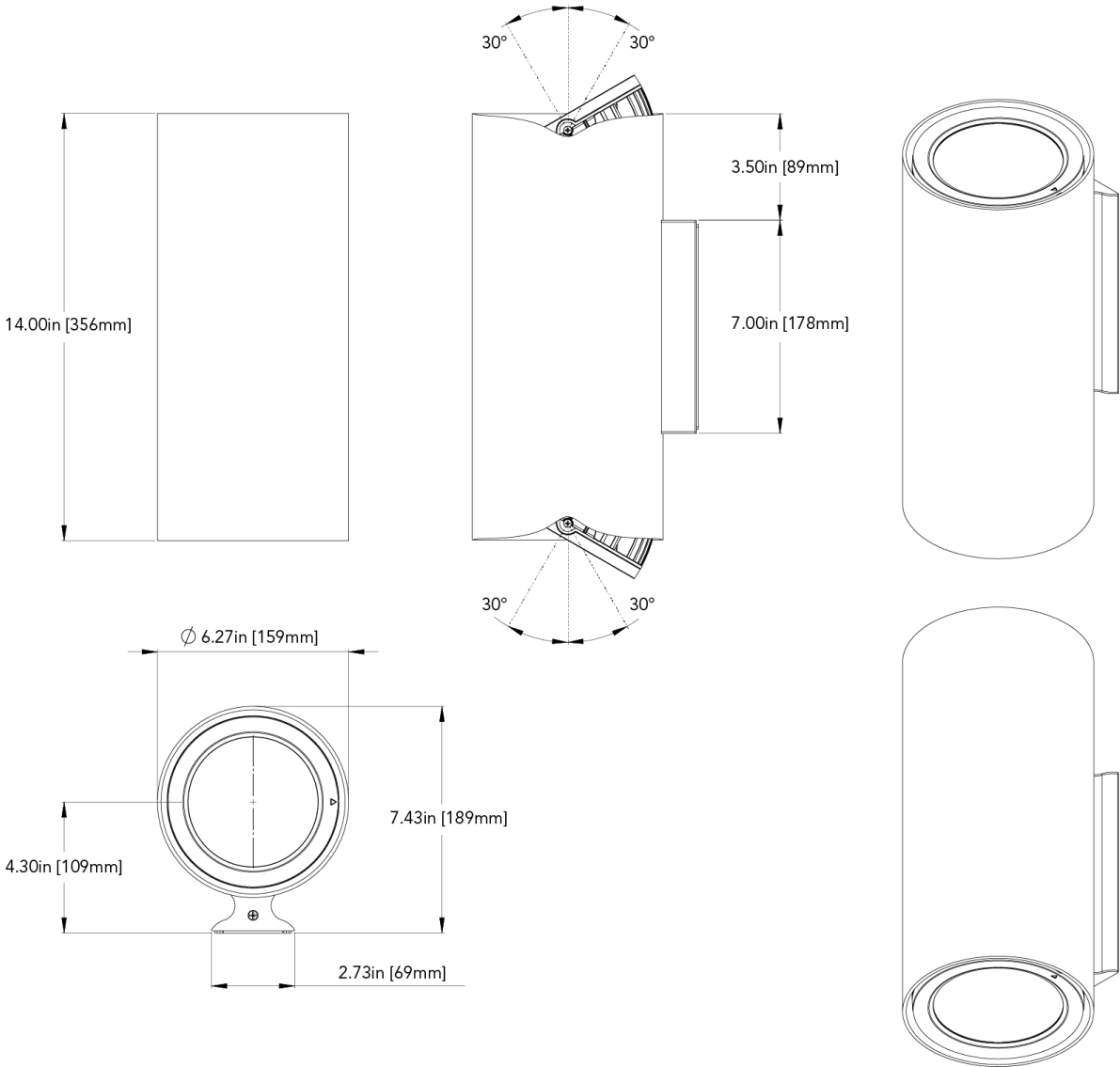
# CYLINDER EX™

## 6"- Full Size Classic Wall Mount Direct-Indirect Only



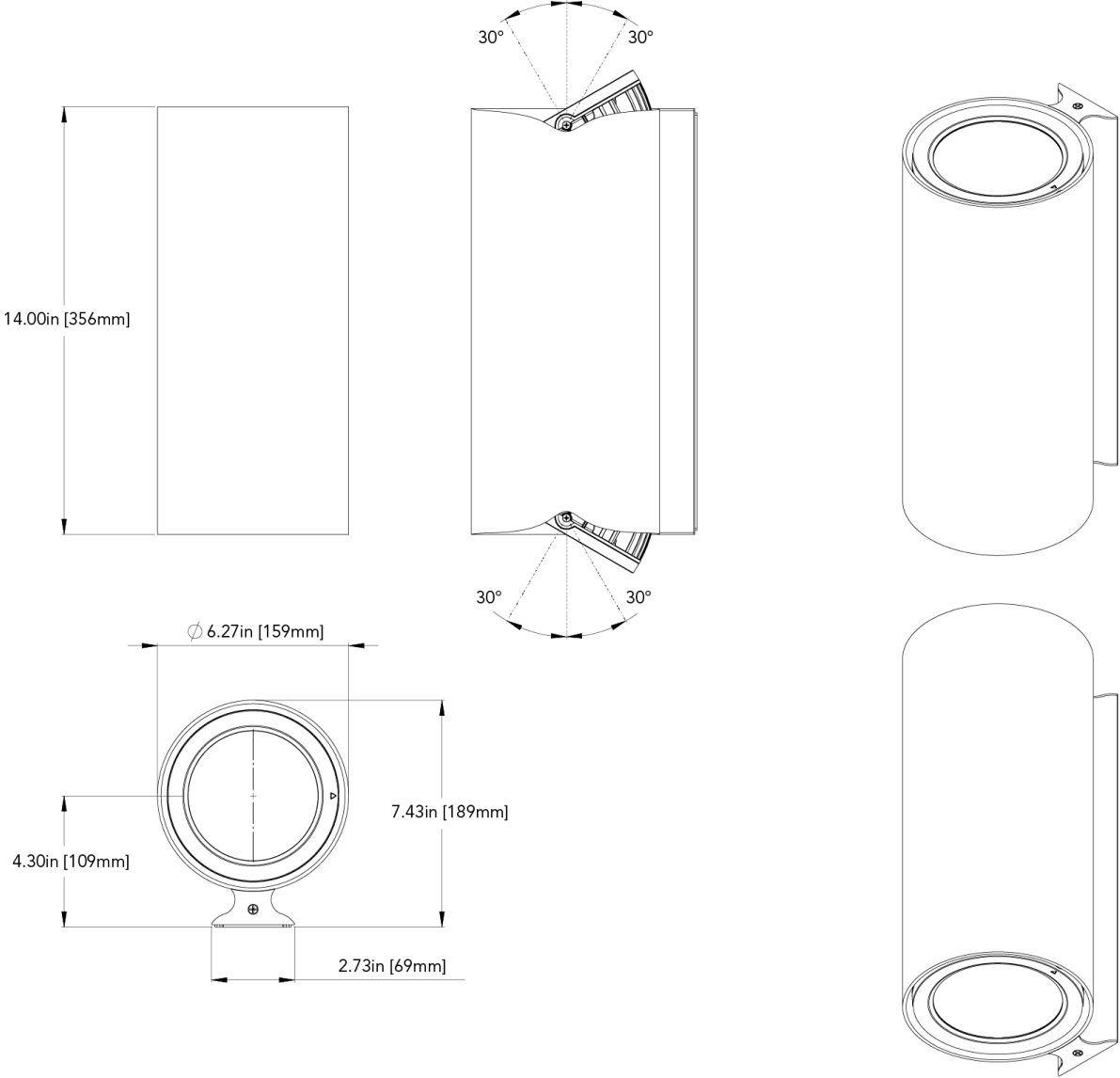
# CYLINDER EX™

## 6"- Full Size Short Narrow Wall Mount Direct-Indirect Only



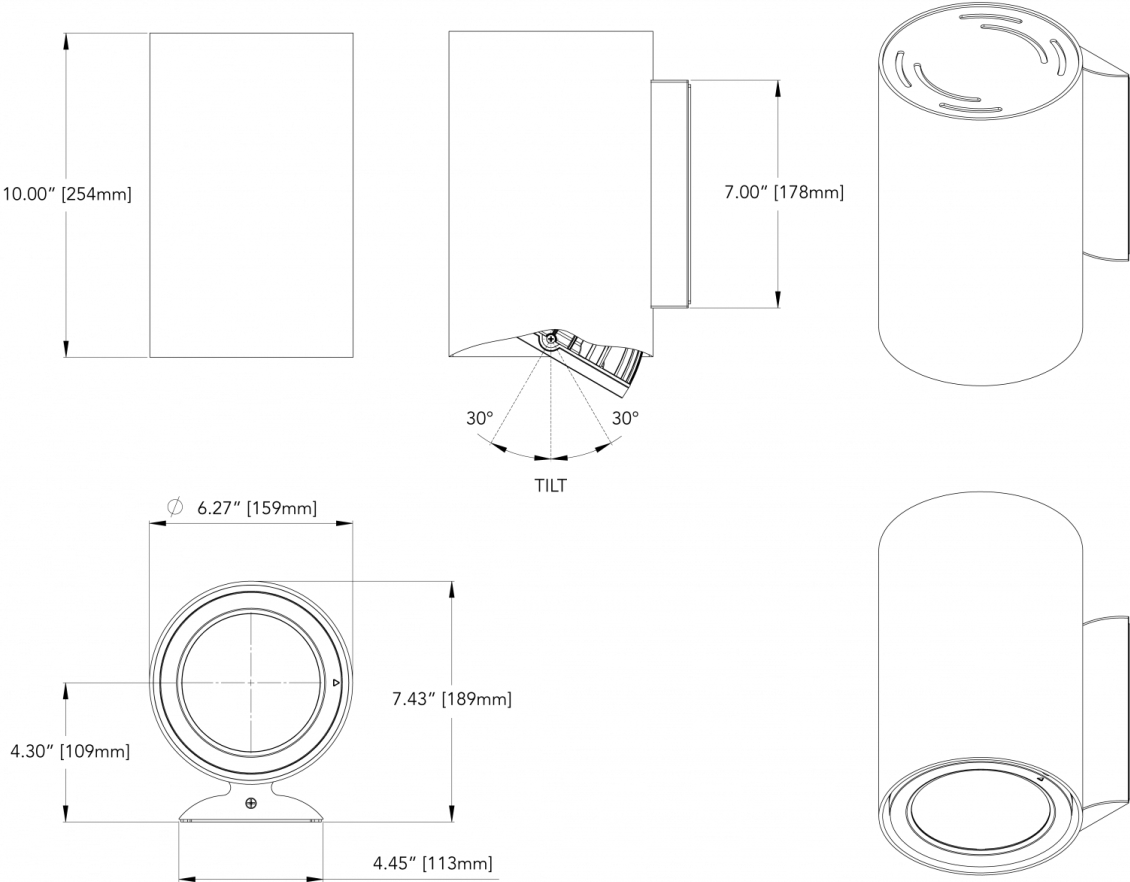
CYLINDER EX™

6"- Full Size Tall Narrow Wall Mount Direct-Indirect



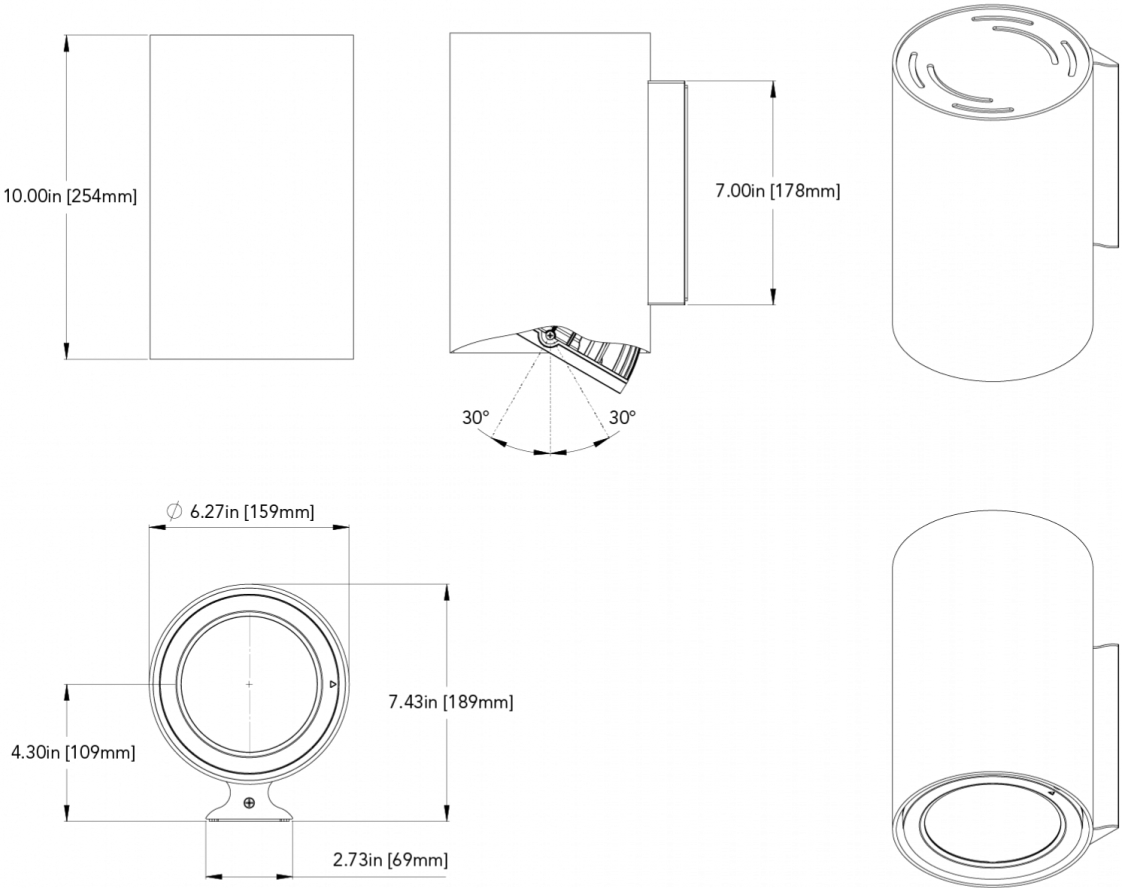
# CYLINDER EX™

6" - Classic Wall Mount Direct or Indirect only



# CYLINDER EX™

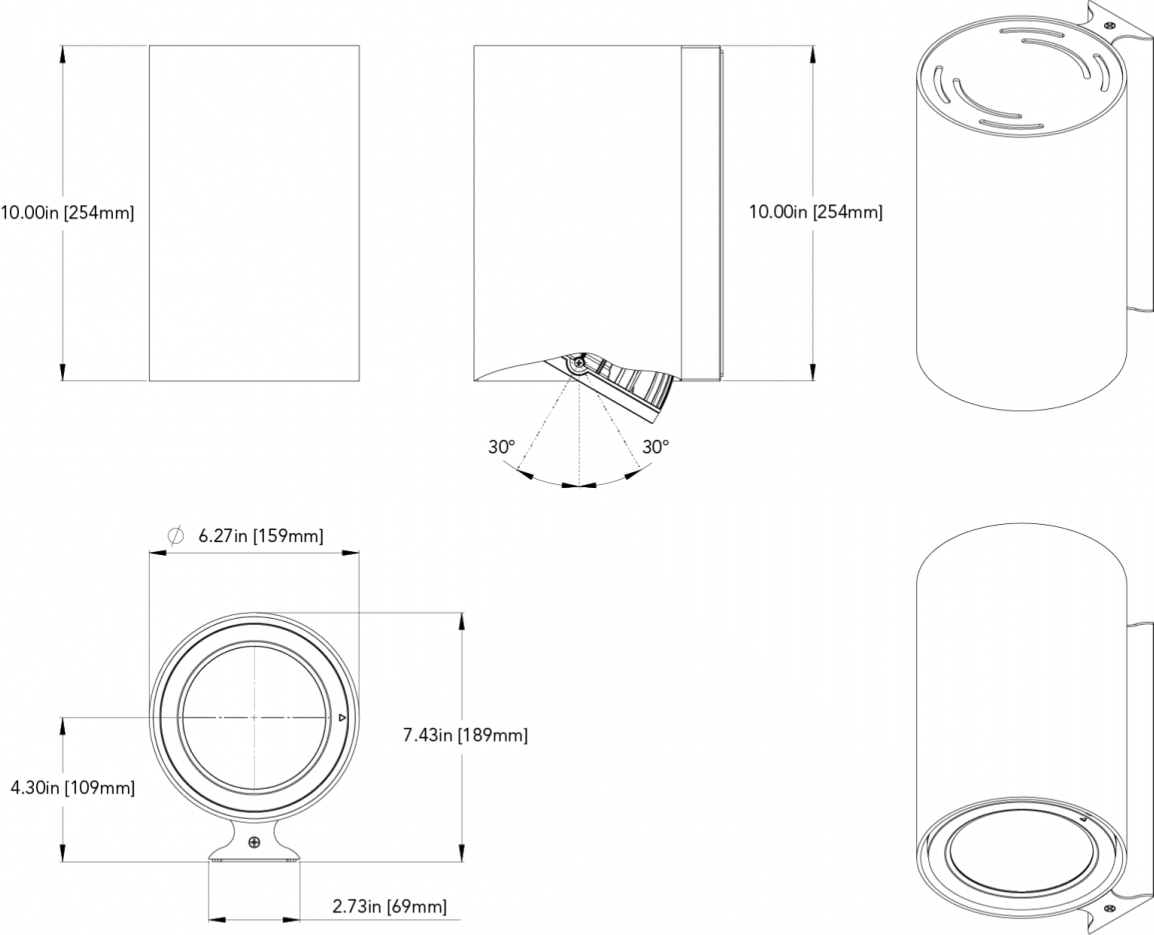
## 6"- Narrow Wall Mount Direct/Indirect Only





CYLINDER EX™

6"- Half Size Narrow full Wall Mount Direct Only



CYLINDER EX™

6" - Pendant Stem Mount Direct Only

