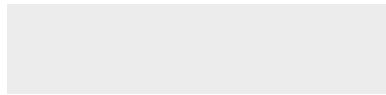
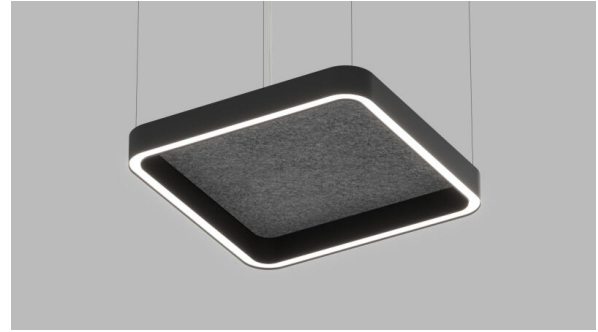




ENDLESS QUAD™

SHORT SPECIFICATION SHEET



FIXTURE TYPE



FIXTURE CODE



QUANTITIES

1 HOW TO ORDER

1. LUMINAIRE

ENDQ1P01 34" Square Direct

ENDQ1P02 58" Square Direct

ENDQ1P03 34"x58" Direct

ENDQ2P01 34" Square
Direct/Indirect

ENDQ2P02 58" Square
Direct/Indirect

ENDQ2P03 34"x58"
Direct/Indirect

2. LM/FT (DIRECT)

LPF030 300 lm/ft ¹

LPF050 500 lm/ft ²

LPF070 700 lm/ft ³

Black Metallic Textured available with 300 lm/ft and 500 lm/ft only.

¹ Based on 50% of total output

² Based on 75% of total output.

³ 100% of total output.

3. LM/FT (INDIRECT)

LPG000 Not required

LPG050 500 lm/ft

LPG070 700 lm/ft

LPG090 900 lm/ft

¹ Based on 50% of total output. ² Based on 75% of total output. ³ 100% of total output.

4. CRI

CR90 CRI 90+

5. CCT (DIRECT)

CTA30 3000K CTA35 3500K CTA40 4000K

6. CCT (INDIRECT)

CTB00 Not required CTB30 3000K CTB35 3500K CTB40 4000K

7. DIRECT LENS

DD3 Diffused

8. INDIRECT LENS

UD0 Not required UD2 Opal

9. VOLTAGE

V1 120/277V V2 240V ¹

¹ Not available in North America.

10. DIMMING

DA01 0-10V Dimming 1.0%

11. CEILING TYPE

H1 Hard ceiling ¹

¹ Designed for drywall ceilings.

12. SUSPENSION

HLA03 3ft cable suspension HLA06 6ft cable suspension HLA09 9ft cable suspension

13. FIXTURE FINISH

FA01 White – Textured FA02 Black Metallic Textured ¹ FA20 Silver Metallic Textured

¹ Black Metallic Textured available with 300 lm/ft and 500 lm/ft only.

14. CANOPY FINISH

CF01 White – Textured CF02 Black Metallic Textured CF20 Silver Metallic Textured

ACOUSTIC PANEL STYLE

APS00 Not required **APS01** Flat **APS02** Cross Hatch **APS03** Fine Cross Hatch
APS04 Parallel Hatch

Available in 4 styles. When the flat style (APS01) is required, the 34"x58" and 58" Sq versions will have a visible seam.

ACOUSTIC PANEL COLOR

AP00 Not required **AP02** Citrus **AP04** White **AP08** Red Coffee
AP11 Light Gray **AP13** Apple Green **AP22** Blue **AP26** Sesame Gray
AP27 Black **AP47** Navy Peony **AP60** Pure Red **AP73** Cloudburst
AP89 Douglas Fir **APW01** Oak

Contact factory for additional colors.

15. EMERGENCY

E0 Not required **E1** Emergency system – Integral ^{1 2}

¹ An extra power cord will be supplied to each section of the fixture when ordering emergency.

² Consult factory. A drawing will be required at time of ordering to determine the required number and location of the emergency sections or generator circuits. Not available in 347V.

16. CIRCUITS

CS1 Single circuit **CS2** Dual circuit

17. SENSORS

Compatible with Avi-On, Casambi, Enlighted, Lutron Vive, nLight, NX Lighting Controls, Osram, Philips, and others. Consult factory.