

# KURL™ - CEILING

Project Name:

Fixture Type:

Fixture Code:

Quantities:



KURL™ - CEILING



# KURL™ - CEILING

**KURL** deviates from the classic geometries of straight lines and circles. Available in 4 radii ranging from 42" to 72", the interrupted ring brings subtle whimsy to linear lighting, especially when orientated at different angles.

## GENERAL SPECIFICATION

### Body and trim

Steel and aluminum.

### Drivers

Integral, HPF electronic drivers for 120-277V, 347V (EU-240V).

### Integral Emergency system

Emergency option provides a 1.5 hour (3 hours for EU) emergency lighting facility. The self contained system includes the inverter module, NiCad batteries, LED charge indicator and test switch (NA only). Not available with a 347V supply.

### Mechanical

Luminaires mount directly over J box (by others - North America only).

### Sensors

Consult factory regarding sensor compatibility.

### Approvals

Damp Rated.

### Finish

Powder coated.

### Diffusers

Opal polycarbonate direct/Clear or opal polycarbonate indirect.

### PoE

Kurl can integrate into your data network via Power over Ethernet (PoE) connectivity.

### Delivered Lumens

Delivered lumens & LPW based on 4000K (min 80 CRI) for White LEDs only. The driver is integral to the fixture housing.

### Reported L70 @25°C (77°F)

> 50,000 hrs.

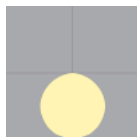
## MOUNTING & OPTICS



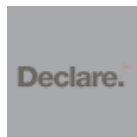
Ceiling Direct



RGBW



Direct



Declare



PoE

# KURL™ - CEILING

## HOW TO ORDER

### A. LUMINAIRE

**KURC1C42** 42" radius, 8200 lms

**KURC1C48** 48" radius, 8900 lms

**KURC1C54** 54" radius, 10100 lms

**KURC1C72** 72" radius, 10300 lms

Data shown at max delivered lumens.  
Recommended for installation on a hard ceiling.

### B. LUMENS/FT

**LPF055** 550 lm/ft<sup>1</sup>

**LPF082** 825 lm/ft<sup>2</sup>

**LPF110** 1100 lm/ft<sup>3</sup>

<sup>1</sup> Based on 50% of total output

<sup>2</sup> Based on 75% of total output.

<sup>3</sup> 100% of total output.

### C. CRI

**CR80** CRI 80+

**CR90** CRI 90+

### D. CCT

**CTA30** 3000K

**CTA35** 3500K

**CTA40** 4000K

**CTA50** RGBW

### E. VOLTAGE

**V1** 120/277V

**V2** 240V<sup>1</sup>

**V3** 347V<sup>2</sup>

**V4** Low Voltage<sup>3</sup>

<sup>1</sup> Not available in North America.

<sup>2</sup> Available with DA01 dimming only.

### F. DIMMING

**DA01** 0-10V Dimming 1.0%

**DA02** 0-10V Dimming 0.1%<sup>1</sup>

**DA20** DALI Dimming 0.1%<sup>1</sup>

**DA21** DALI Dimming 1.0%<sup>1</sup>

**DA30** DSI/switchDim<sup>1 2</sup>

**DA40** DMX Dimming<sup>1 4</sup>

**DA45** PoE

<sup>1</sup> Not available with V3.

<sup>2</sup> Not available in North America.

<sup>3</sup> Available with V4 only.

<sup>4</sup> Available with CTA50 only.

### G. FIXTURE FINISH

**FA01** White

**FA02** Black Metallic - Textured

**FA20** Silver Metallic - Textured

**FA25** Gold Metallic - Textured

**FA27** Wood grain - Light Cherry<sup>1</sup>

**FA28** Wood grain - Dark Walnut<sup>1</sup>

**FA44** Midnight Blue Metallic - Textured

**FA45** Copper Metallic

**FA46** Charcoal Metallic - Textured

**FA47** Bronze Metallic - Textured

**FA52** Champagne Metallic

**FA53** Red Metallic - Textured

<sup>1</sup> Longer lead times may apply, consult factory.

### H. EMERGENCY

**E0** Not required

**E1** Emergency system - Integral<sup>1</sup>

<sup>1</sup> Not available with V3.



# KURL™ - CEILING

## TECHNICAL DATA

### LUMINAIRE

Data shown at max delivered lumens.

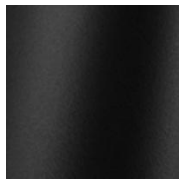
Recommended for installation on a hard ceiling.

Code	KURC1C42	KURC1C48	KURC1C54	KURC1C72
Radius (A)	42"	48"	54"	72"
Arc°	120°	120°	120°	90°
Wattage	83W	90W	104W	104W
Delivered lms	8200	8900	10100	10300
LPW	98	98	98	98

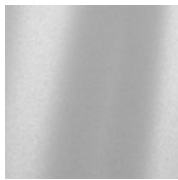
## FINISH



White



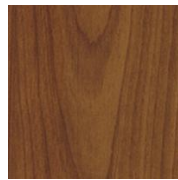
Black Metallic -  
Textured



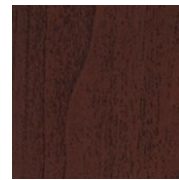
Silver Metallic -  
Textured



Gold Metallic -  
Textured



Wood grain - Light  
Cherry<sup>1</sup>



Wood grain - Dark  
Walnut<sup>1</sup>



Midnight Blue Metallic -  
Textured



Copper Metallic



Charcoal Metallic -  
Textured



Bronze Metallic -  
Textured



Champagne Metallic



Red Metallic -  
Textured

<sup>1</sup> Longer lead times may apply, consult factory.

## APPROVALS



# KURL™ - CEILING

## DIMENSIONAL DIAGRAMS

