

LE LOUVRE™ - CONTINUOUS

Project Name:

Fixture Type:

Fixture Code:

Quantities:



LE LOUVRE™ - CONTINUOUS



LE LOUVRE™ - CONTINUOUS

The striking new concept in louver technology is disrupting the linear lighting category, and taking glare control to new heights. Our award-winning design with diagonal cross-hatched construction of the louver in a soft concave shape provides not just visual comfort but a touch of panache unseen in traditional linear lighting. Louvers are available in white for higher performance, black for the highest glare control, and rich satinized finishes - chrome, gold, champagne, for elegant interior designs.

GENERAL SPECIFICATION

Body

Aluminum.

Suspension

Steel cables.

Drivers

HPF electronic drivers for 120-277V, 347V (EU-240V). The driver is integral to the fixture housing.

PoE

Can be integrated into your data network via Power over Ethernet (PoE) connectivity.

Delivered lumens

Delivered lumens & LPW based on 4000K CRI 80+

Reported L70 @25°C (77°F)

> 60,000 hrs @ 2000 lumens/ft (6000 lumens/m)

Integral Emergency system

Emergency option provides a 1.5 hour (3 hours for EU) emergency lighting facility. The self contained system includes the inverter module, NiCad batteries, LED charge indicator and test switch (NA only). Not available with a 347V supply.

Tunable White

Tunable white available, consult factory.

Approvals

Damp Rated.

Design

US Pat. No. D959,043.

Finish

Powder coated

Power cable

Silver braided.

Diffuser

Opal acrylic. 2.4" width.

BIOS

For circadian lighting, consult factory.

Mechanical

Luminaires mount directly over J box (by others).

Estimated L70 @25°C (77°F)

> 165,000 hrs @ 2000 lumens/ft (6000 lumens/m)

Sensors

Compatible with Avi-On, Casambi, Enlighted, Lutron Vive, nLight, NX Lighting Controls, Osram, Philips, and others. Consult factory.

RGBW

RGBW available, consult factory.

Designed by

Serge Cornelissen.

MOUNTING & OPTICS



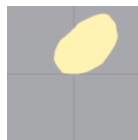
Suspended Direct



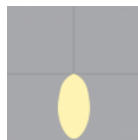
Suspended Direct/Indirect



Indirect UD1



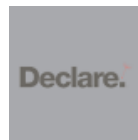
Indirect UD3



Direct DD4



Bios



Declare



PoE



LE LOUVRE™ - CONTINUOUS

HOW TO ORDER

A. LUMINAIRE

LELP1P Direct

LELP2P Direct/Indirect

One power cord for every 50 linear feet.

B. LENGTH OF RUN

SFA _ _ _

The minimum length of order is 4ft. Lengths are to be in 2ft increments.

Example: 4ft = SFA040

Example: 10ft = SFA100

Example: 50ft = SFA500

For runs over 50ft in length, consult factory.

C. MAX LENGTH PER SECTION

SL04 4ft

SL06 6ft

SL08 8ft

SL10 10ft

SL12 12ft

You can select the preferred maximum length per segment, to account for transportation and building constraints. Example: If a 40ft run is required and SL12 (12ft) is selected, we would provide 4 10ft segments. For special requirements, please contact sales@betacalco.com.

D. LOUVER

LV1 Frosted

LV2 Black

LV4 Satin Chrome

LV6 Satin Gold

LV9 Satin Champagne

E. LM/FT (DIRECT)

LPF010 100 lm/ft

LPF020 200 lm/ft

LPF030 300 lm/ft

LPF040 400 lm/ft

LPF050 500 lm/ft

LPF060 600 lm/ft

LPF070 700 lm/ft

LPF080 800 lm/ft

LPF100 1000 lm/ft

LPF120 1200 lm/ft

Lumens/ft are determined by the color of the Louver. Consult website for available lumens/ft. based on selected louver.

F. LM/FT (INDIRECT)

LPG000 Not required

LPG025 250 lm/ft

LPG050 500 lm/ft

LPG075 750 lm/ft

LPG100 1000 lm/ft

LPG120 1200 lm/ft

LPG160 1600 lm/ft

Consult website for available lumens/ft.
All data shown based on DD3 diffuser.

G. CRI

CR80 CRI 80+

CR90 CRI 90+

H. CCT (DIRECT)

CTA30 3000K

CTA35 3500K

CTA40 4000K

I. CCT (INDIRECT)

CTB00 Not required

CTB30 3000K

CTB35 3500K

CTB40 4000K

LE LOUVRE™ - CONTINUOUS

J. DIRECT DIFFUSER

DD1 Asymmetric diffuser ¹ **DD4** Comfort diffuser

¹ Recommended for use with Frosted louver only. When standing at the end view of the profile on the side where the power cord is installed, the asymmetric beam will aim to the right.

K. UPLIGHT DIFFUSER

UD0 Not required **UD1** Batwing **UD3** Asymmetric diffuser ¹

¹ Available up to 1200 lm/ft.

L. BLACKOUT PLATE

UB00 Not required **UB_ _** Blackout plate ¹

¹ Available on a per foot basis. May be required to prevent lighting up duct work in a loft type application.

M. VOLTAGE

V1 120/277V **V2** 240V ¹ **V3** 347V ² **V4** Low Voltage ³

¹ Not available in North America.

² Only available with DA01 dimming.

³ Only available with DA45 dimming.

N. DIMMING

DA01 0-10V Dimming 1.0% **DA02** 0-10V Dimming 0.1% ¹ **DA20** DALI Dimming 0.1% ¹ **DA21** DALI Dimming 1.0% ¹
DA30 DSI/switchDim ² **DA45** PoE ³

¹ Not available with 347V.

² Not available in North America.

³ Only available with V4.

O. CEILING TYPE

G1 Grid ceiling ¹ **H1** Hard ceiling ²

The cost for the canopies, power cables, connections mechanisms and endcaps for the fixture has been added to these items.

¹ Combo kit provided includes installation to T-bar and through tile mount.

² Designed for drywall ceilings.

P. SUSPENSION

HLA03 3ft cable suspension **HLA06** 6ft cable suspension **HLA09** 9ft cable suspension

Q. FIXTURE FINISH

FA01 White - Textured **FA02** Black Metallic - Textured **FA20** Silver Metallic - Textured **FA25** Gold Metallic - Textured
FA27 Wood grain - Light Cherry ¹ **FA28** Wood grain - Dark Walnut ¹ **FA44** Midnight Blue Metallic - Textured **FA45** Copper Metallic
FA46 Charcoal Metallic - Textured **FA47** Bronze Metallic - Textured **FA52** Champagne Metallic **FA53** Red Metallic - Textured

¹ Longer than normal lead times may apply, consult factory.

LE LOUVRE™ - CONTINUOUS

R. CANOPY FINISH

CF01 White

CF02 Black Metallic - Textured

CF20 Silver Metallic - Textured

CF25 Gold Metallic - Textured

CF44 Midnight Blue Metallic - Textured

CF45 Copper Metallic

CF46 Charcoal Metallic - Textured

CF47 Bronze Metallic - Textured

CF52 Champagne Metallic

CF53 Red Metallic - Textured

S. EMERGENCY

E0 Not required

E1 Emergency system - Integral ¹

E3 Emergency generator circuit ¹

¹ A drawing will be required at the time of ordering to determine the required number and location of the emergency sections or generator circuits. ¹ Available upon request, consult factory for details. Not available with 347V.

T. CIRCUITS

CS1 Single circuit

CS2 Dual circuit ¹

¹ Independent control of uplight for LELP2P.

U. SENSORS



LE LOUVRE™ - CONTINUOUS

TECHNICAL DATA

LUMINAIRE

One power cord for every 50 linear feet.

Code	LELP1P	LELP2P
Light Direction	Direct	Direct/Indirect

LOUVER



Frosted

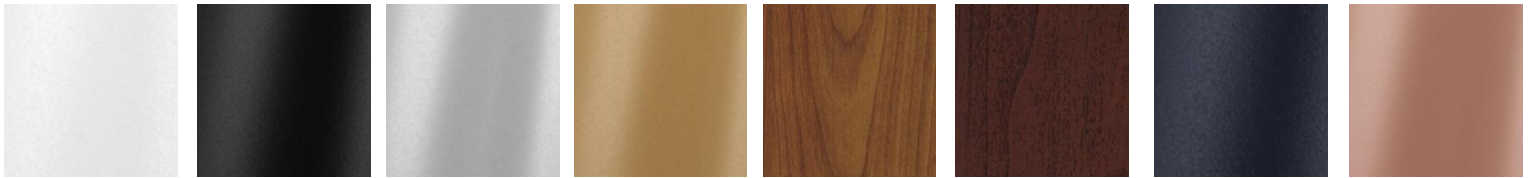
Black

Satin Chrome

Satin Gold

Satin Champagne

FINISH



White - Textured

Black Metallic -
Textured

Silver Metallic -
Textured

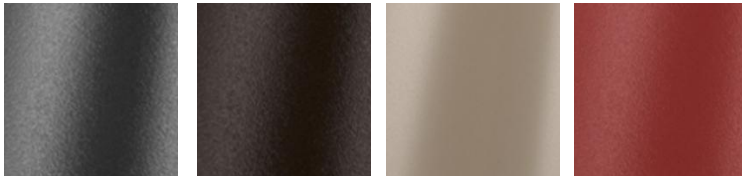
Gold Metallic -
Textured

Wood grain - Light
Cherry¹

Wood grain - Dark
Walnut¹

Midnight Blue Metallic -
Textured

Copper Metallic



Charcoal Metallic -
Textured

Bronze Metallic -
Textured

Champagne Metallic

Red Metallic -
Textured

¹ Longer than normal lead times may apply, consult factory.

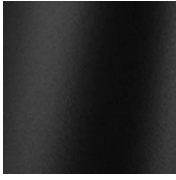


LE LOUVRE™ - CONTINUOUS

CANOPY FINISH



White



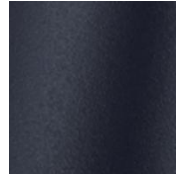
Black Metallic -
Textured



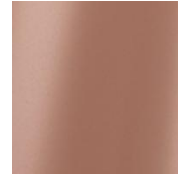
Silver Metallic -
Textured



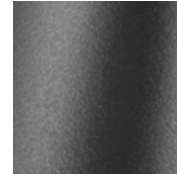
Gold Metallic -
Textured



Midnight Blue Metallic -
Textured



Copper Metallic



Charcoal Metallic -
Textured



Bronze Metallic -
Textured



Champagne Metallic



Red Metallic -
Textured

APPROVALS



DAMP
LOCATION



IP20

LE LOUVRE™ - CONTINUOUS

PERFORMANCE DATA

DIRECT FROSTED LOUVER WITH COMFORT LENS (DD4)

	LUMEN/FT	WATT/FT	LPW
	1200	13	101
	1000	9	107
	800	7	109
	700	6	111
	600	5	115
	500	4	115
	400	3	115
	300	2	116
	200		121

DIRECT BLACK LOUVER WITH COMFORT LENS (DD4)

	LUMEN/FT	WATT/FT	LPW
	500	13	40
	400	9	42
	300	7	43
	200	5	45
	100	2	47

DIRECT SATIN CHROME LOUVER WITH COMFORT LENS (DD4)

	LUMEN/FT	WATT/FT	LPW
	800	13	60
	700	11	60
	600	9	63
	500	7	65
	400	5	68
	300	3	68
	200	3	68
	100	2	69

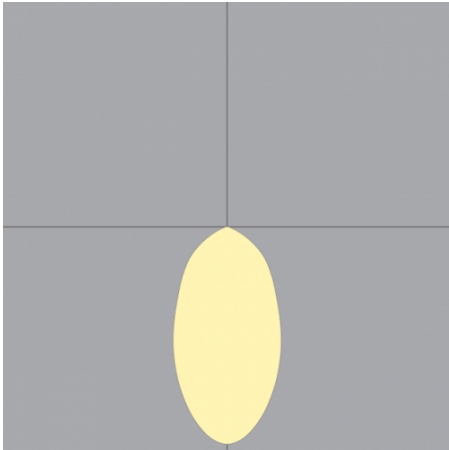
LE LOUVRE™ - CONTINUOUS

DIRECT SATIN GOLD LOUVER WITH COMFORT LENS (DD4)

LUMEN/FT

WATT/FT

LPW



800
700
600
500
400
300
200
100

13
11
9
7
5
3
3
2

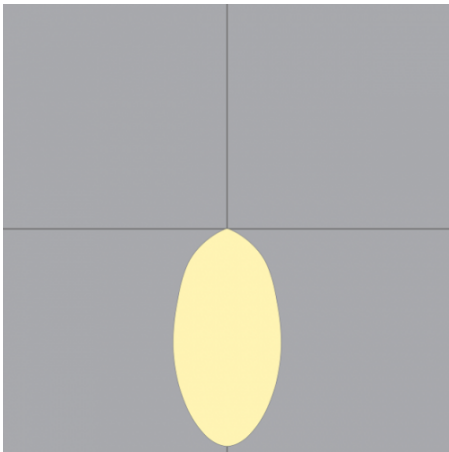
59
59
62
63
66
66
66
68

DIRECT SATIN CHAMPAGNE LOUVER WITH COMFORT LENS (DD4)

LUMEN/FT

WATT/FT

LPW



800
700
600
500
400
300
200
100

13
11
9
7
5
3
3
2

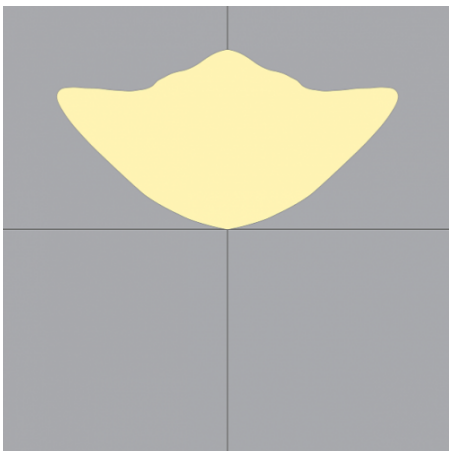
60
60
63
65
68
68
68
69

INDIRECT BATWING (UD1)

LUMEN/FT

WATT/FT

LPW



1600
1200
1000
750
500
250

13
9
7
5
3
2

129
137
140
146
147
152

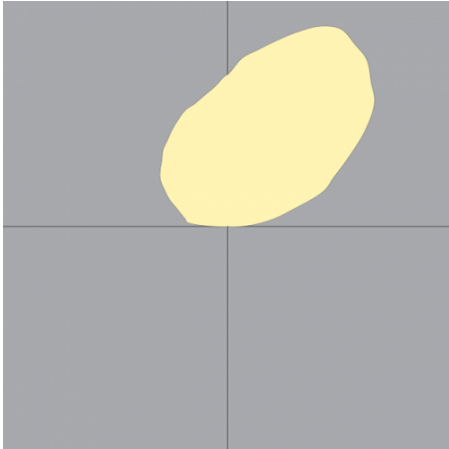
LE LOUVRE™ - CONTINUOUS

INDIRECT ASYMMETRIC (UD3)

LUMEN/FT

WATT/FT

LPW



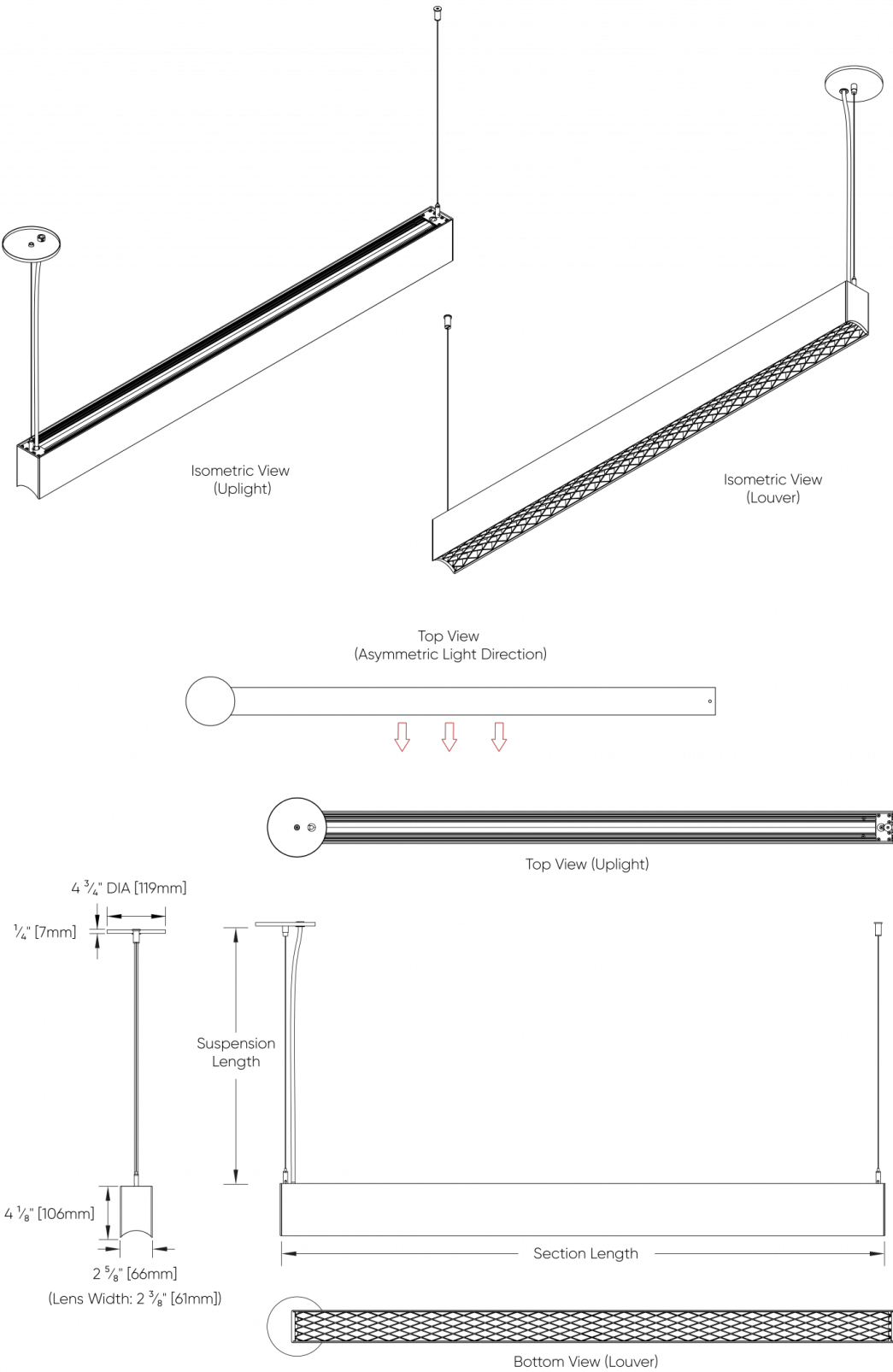
1200
1000
750
500
250

13
10
8
5
2

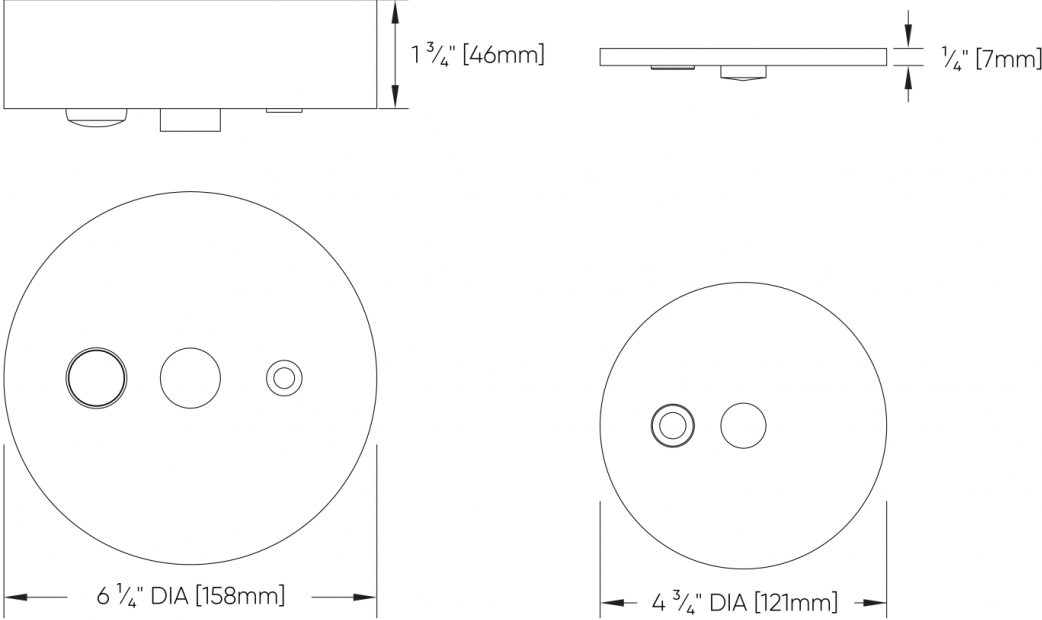
97
100
103
107
112

LE LOUVRE™ - CONTINUOUS

DIMENSIONAL DIAGRAMS



LE LOUVRE™ - CONTINUOUS



Canopy with Sensor

Standard Canopy