

# MATREX DUAL TWIST™ - SURFACE



Project Name:

Fixture Type:

Fixture Code:

Quantities:

## A. LUMINAIRE

**MXDT1P01** Double Down, 18400 lms      **MXDT2P01** Direct/Indirect, 18400 lms

All data shown at max output and nominal values.  
For MXDT2P01 (Direct/Indirect) the upper module will be direct and lower module will be indirect.

## B. LUMENS (UPPER MODULE)

**LMA0230** 2300                      **LMA0460** 4600                      **LMA0690** 6900                      **LMA0920** 9200

For MXDT2P01 (Direct/Indirect) the upper module will be direct and lower module will be indirect.  
\* Max lumen values shown, refer to IES files for the different snoot and beam options.

## C. LUMENS (LOWER MODULE)

**LMB0230** 2300                      **LMB0460** 4600                      **LMB0690** 6900                      **LMB0920** 9200

For MXDT2P01 (Direct/Indirect) the upper module will be direct and lower module will be indirect.  
\* Max lumen values shown, refer to IES files for the different snoot and beam options.

## D. CRI

**CR80** CRI 80+                      **CR90** CRI 90+

## E. CCT

**CTA27** 2700K<sup>1</sup>                      **CTA30** 3000K                      **CTA35** 3500K                      **CTA40** 4000K

<sup>1</sup> 2700K is only available with CRI 80+

## F. BEAM ANGLE (UPPER MODULE)

**BA15** 15°                      **BA30** 30°                      **BA50** 50°                      **BA70** 70°  
**BA80** 50°x80°<sup>1</sup>

<sup>1</sup> Available with Double Down luminaire only.

## G. BEAM ANGLE (LOWER MODULE)

**BB15** 15°                      **BB30** 30°                      **BB50** 50°                      **BB70** 70°  
**BB80** 50°x80°<sup>1</sup>

## H. VOLTAGE

**V1** 120/277V                      **V2** 240V<sup>1</sup>                      **V3** 347V<sup>2</sup>

<sup>1</sup> Not available in North America

<sup>2</sup> Only available with DA01 dimming

# MATREX DUAL TWIST™ - SURFACE

## I. DIMMING

**DA01** 0-10V Dimming 1.0%

**DA02** 0-10V Dimming 0.1%<sup>1</sup>

**DA20** DALI Dimming 0.1%<sup>1</sup>

**DA21** DALI Dimming 1.0%<sup>1</sup>

**DA30** DSI/switchDim<sup>1 2</sup>

<sup>1</sup> Not available with V3.

<sup>2</sup> Not available in North America.

## J. FIXTURE FINISH

**FA01** White

**FA02** Black Metallic - Textured

**FA20** Silver Metallic - Textured

**FA25** Gold Metallic - Textured

**FA44** Midnight Blue Metallic - Textured

**FA46** Charcoal Metallic - Textured

**FA47** Bronze Metallic - Textured

**FA53** Red Metallic - Textured

## K. SNOOT (UPPER MODULE)

**NT1** Standard Snoot - Black<sup>1</sup>

**NT2** Standard Snoot - White<sup>1</sup>

**NT3** Long Snoot - Black<sup>1</sup>

**NT4** Long Snoot - White<sup>1</sup>

**NT7** Hex Louver - Black<sup>2</sup>

**NT8** Ladder Louver - Black<sup>3</sup>

For precise beam angle and lumen output, please refer to the IES files. Note that using snoots and louvers may decrease overall efficacy.

<sup>1</sup> A snoot must be picked at time of order, if you are not ordering a louver.

<sup>2</sup> Not available with Direct/Indirect (Indirect only), BA70 beam angle.

<sup>3</sup> Available with Double Down and Direct/Indirect (Direct only), BA80 beam angle and 2300 lumens only.

## L. SNOOT (LOWER MODULE)

**NU1** Standard Snoot - Black<sup>1</sup>

**NU2** Standard Snoot - White<sup>1</sup>

**NU3** Long Snoot - Black<sup>1</sup>

**NU4** Long Snoot - White<sup>1</sup>

**NU7** Hex Louver - Black<sup>2</sup>

**NU8** Ladder Louver - Black<sup>3</sup>

For precise beam angle and lumen output, please refer to the IES files. Note that using snoots and louvers may decrease overall efficacy.

<sup>1</sup> A snoot must be picked at time of order, if you are not ordering a louver.

<sup>2</sup> Not available with Direct/Indirect (Indirect only), BA70 beam angle.

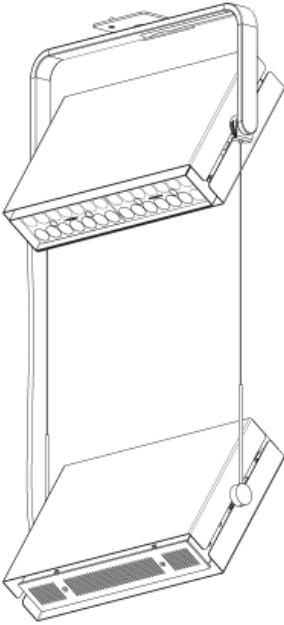
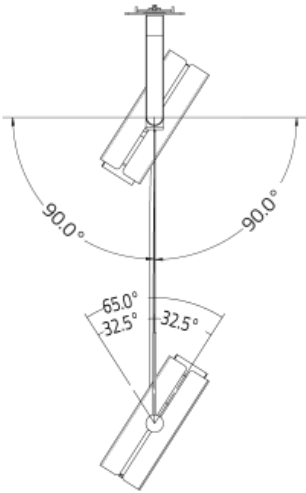
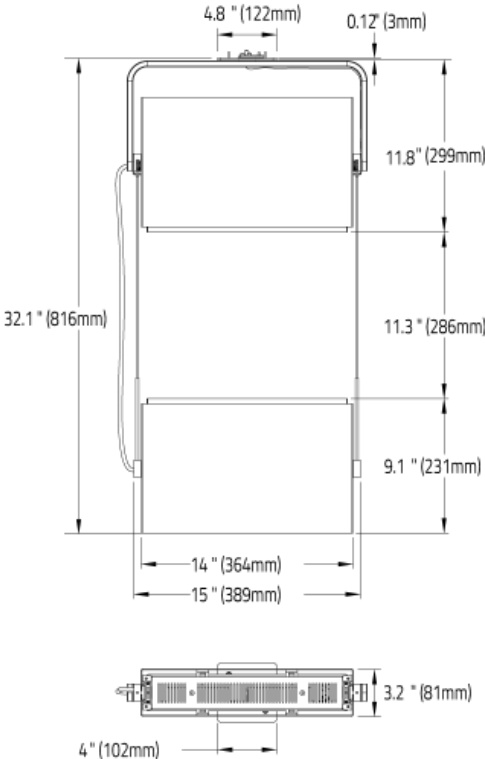
<sup>3</sup> Available with Double Down and Direct/Indirect (Direct only), BA80 beam angle and 2300 lumens only.



# MATREX DUAL TWIST™ - SURFACE

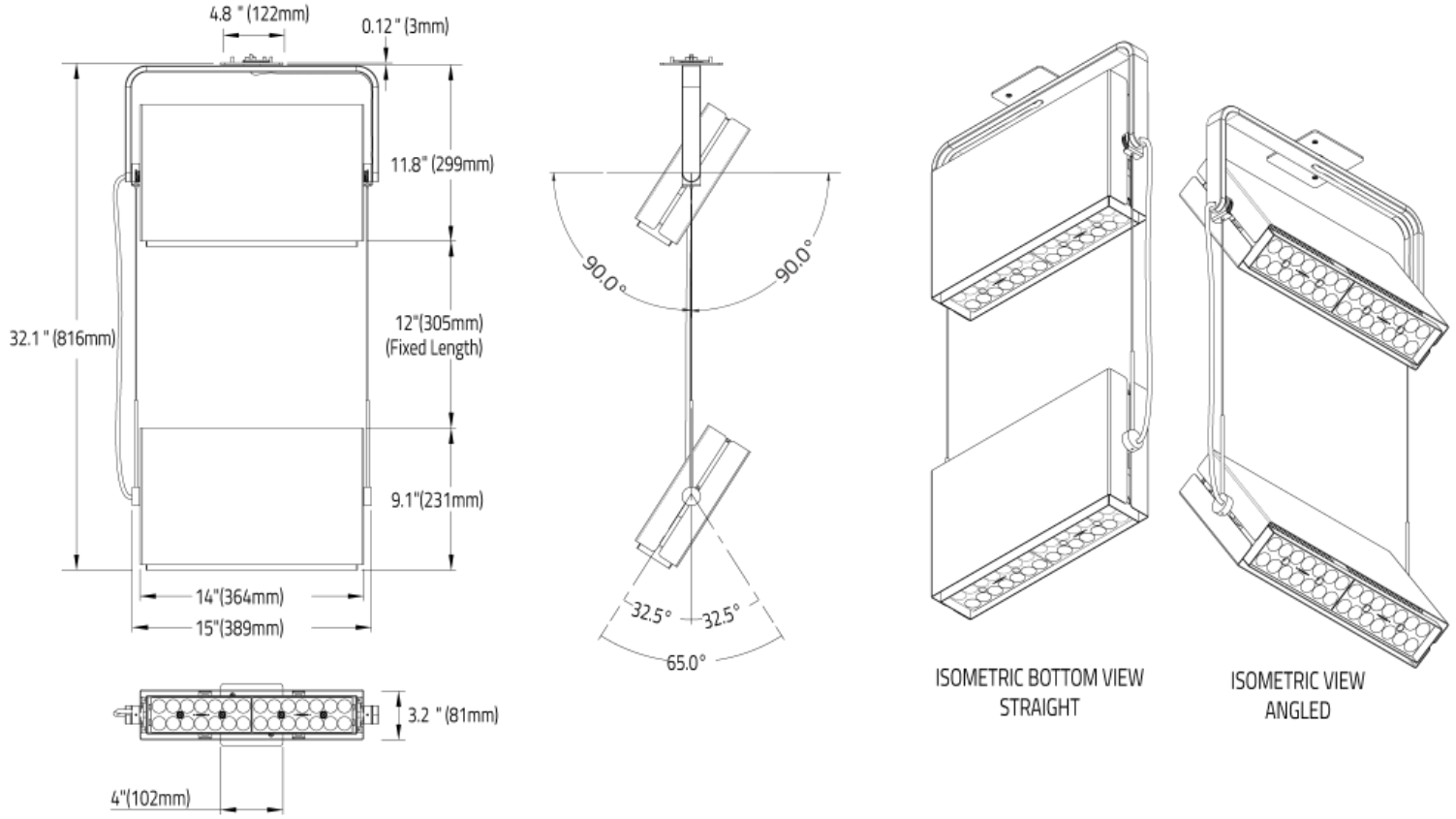
## DIMENSIONAL DIAGRAMS

Direct Indirect



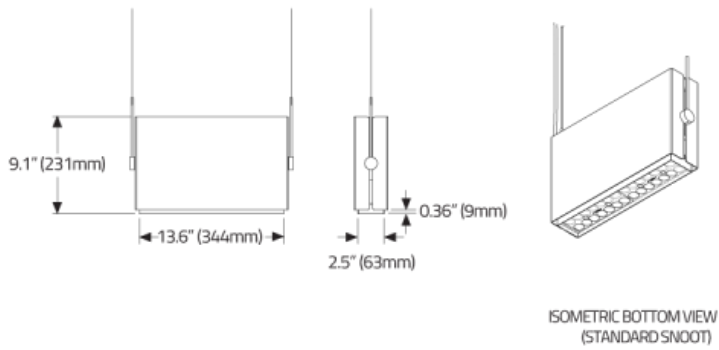
# MATREX DUAL TWIST™ - SURFACE

## Double Down

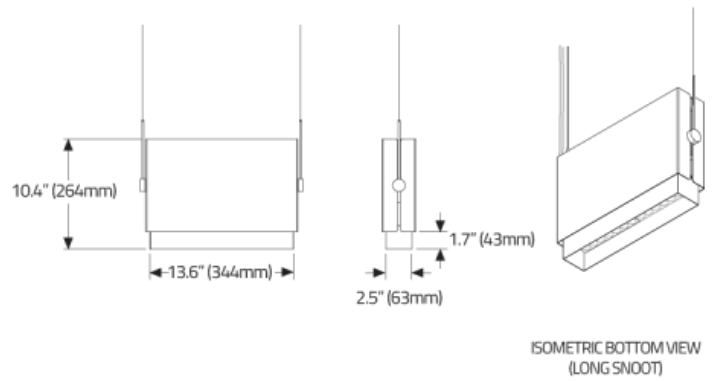


## Snoots

### STANDARD SNOOT



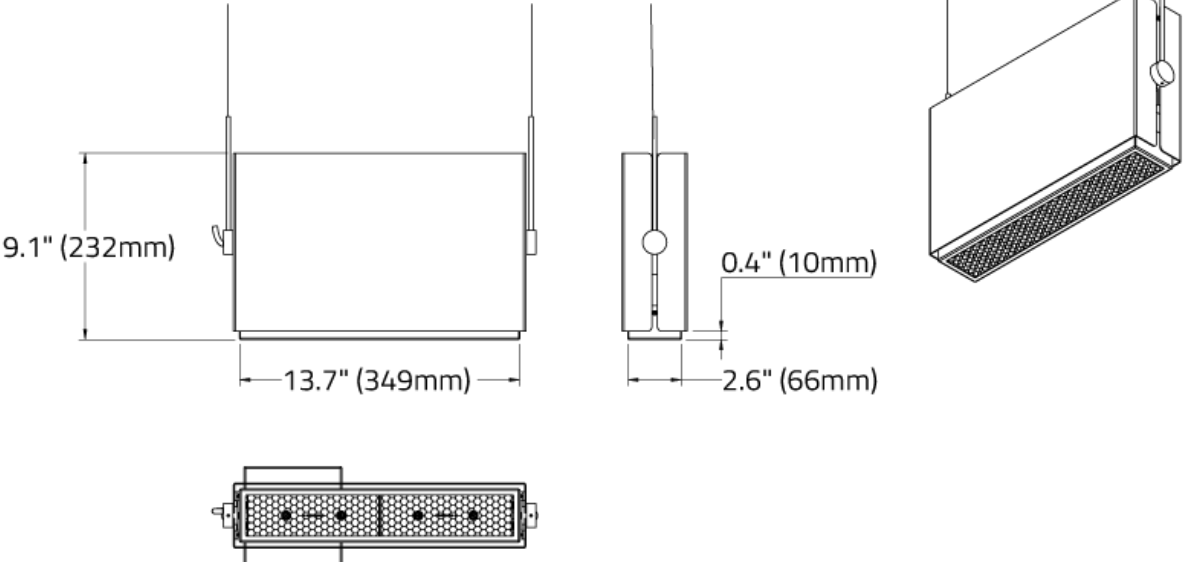
### LONG SNOOT



# MATREX DUAL TWIST™ - SURFACE

LOUVRES

## HEX CELL LOUVRE



## LADDER LOUVRE

