

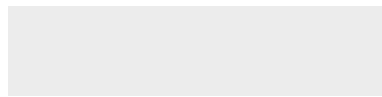


# MATREX RD DUAL™

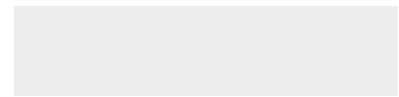
## FULL SPECIFICATION SHEET



FIXTURE TYPE



FIXTURE CODE

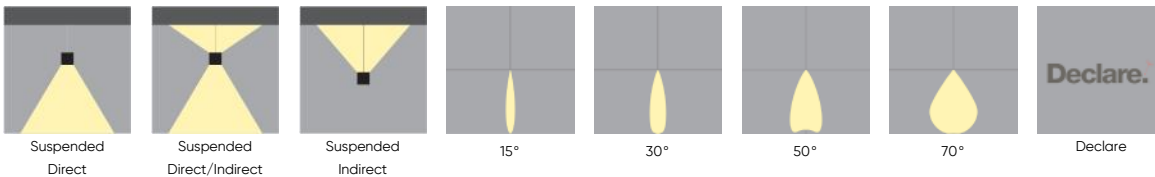


QUANTITIES

### 1 DESCRIPTION

**MATREX** is a family of spotlights packed with power for projecting light at great distances. With best-in-class thermal management and hidden heat sinks, **MATREX's** form factor is significantly smaller than traditional spotlights. Multiple mounting systems are available, providing a variety of functions that work in a range of applications, especially those with multiple ceiling heights. Suspension points originate from the sides allowing for unobstructed uplight. The revolutionary design delivers industry-leading performance from a significantly reduced form factor. The snoots are effective in controlling light spill and reducing glare.

### 2 OPTICS & FEATURES



### 3 APPROVALS



### 4 GENERAL SPECIFICATION

#### BODY AND TRIM

Steel and aluminum.

#### FINISH

Powder coated as specified. Custom paint finishes available to special order.

## SUSPENSION

Steel cables.

## POWER CABLE

Silver braided.

## INTEGRAL EMERGENCY SYSTEM (EU ONLY)

Emergency option provides a 3 hour emergency lighting facility. Integral emergency EU luminaires have a 13.4" (340mm) x 2.3" (58mm) canopy with LED charge indicator.

## DRIVERS

HPF, electronic, 120-277V, 347V (EU-240V). The driver is integral to the fixture housing except when ordering emergency, then the driver is integral to the canopy.

## MECHANICAL

Luminaires mount to a junction box (by others - North America only).

## SENSORS

Consult factory regarding sensor compatibility.

## DELIVERED LUMENS

Delivered lumens & lpw based on 4000K, CRI 80+.

## APPROVALS

Damp Rated.

## REPORTED L70 @25°C (77°F)

> 60,000 hrs.

## ESTIMATED L70 @25°C (77°F)

> 171,000 hrs.

## DESIGNED BY

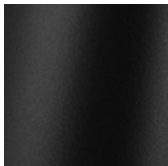
Serge Cornelissen.

## 5 DESIGN OPTIONS

### FINISH - FIXTURE



White



Black  
Metallic -  
Textured



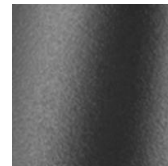
Silver  
Metallic -  
Textured



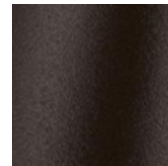
Gold Metallic  
- Textured



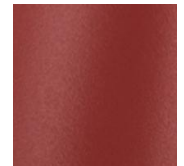
Midnight  
Blue Metallic  
- Textured



Charcoal  
Metallic -  
Textured



Bronze  
Metallic -  
Textured

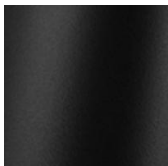


Red Metallic  
- Textured

### FINISH - CANOPY



White



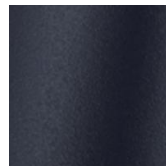
Black  
Metallic -  
Textured



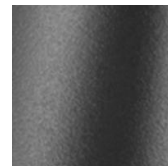
Silver  
Metallic -  
Textured



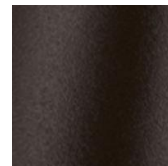
Gold Metallic  
- Textured



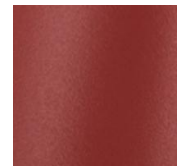
Midnight  
Blue Metallic  
- Textured



Charcoal  
Metallic -  
Textured



Bronze  
Metallic -  
Textured



Red Metallic  
- Textured

6 HOW TO ORDER

## 1. LUMINAIRE

<b>MRDP1P01</b> Double Down, LEDs / Multi-Array Optics, 20100 lms	<b>MRDP2P01</b> Direct/Indirect, LEDs / Multi-Array Optics, 20100 lms	<b>MRDP3P01</b> Double Up, LEDs / Multi-Array Optics, 20100 lms	<b>MRDP1P02</b> Double Down, COB / Reflector, 10050 lms
<b>MRDP2P02</b> Direct/Indirect, COB / Reflector, 10050 lms	<b>MRDP3P02</b> Double Up, COB / Reflector, 10050 lms		

All data shown at max output and nominal values.

## 2. LUMENS (UPPER MODULE)

<b>LMA0250</b> 2500	<b>LMA0500</b> 5025	<b>LMA0750</b> 7500 <sup>1</sup>	<b>LMA1000</b> 10050 <sup>1</sup>
---------------------	---------------------	----------------------------------	-----------------------------------

<sup>1</sup> Not available with COB / Reflector.

\* Max lumen values shown, refer to IES files for the different snoot and beam options.

## 3. LUMENS (LOWER MODULE)

<b>LMB0250</b> 2500	<b>LMB0500</b> 5025	<b>LMB0750</b> 7500 <sup>1</sup>	<b>LMB1000</b> 10050 <sup>1</sup>
---------------------	---------------------	----------------------------------	-----------------------------------

<sup>1</sup> Not available with COB / Reflector.

\* Max lumen values shown, refer to IES files for the different snoot and beam options.

## 4. CRI

<b>CR80</b> CRI 80+	<b>CR90</b> CRI 90+ <sup>1</sup>
---------------------	----------------------------------

<sup>1</sup> Not available with COB / Reflector.

## 5. CCT

<b>CTA27</b> 2700K <sup>1</sup>	<b>CTA30</b> 3000K	<b>CTA35</b> 3500K	<b>CTA40</b> 4000K
---------------------------------	--------------------	--------------------	--------------------

<sup>1</sup> 2700K is only available with CRI 80+ and LEDs / Multi-Array Optics.

## 6. BEAM ANGLE (UPPER MODULE)

<b>BA15</b> 15° <sup>1</sup>	<b>BA30</b> 30° <sup>1</sup>	<b>BA50</b> 50°	<b>BA70</b> 70° <sup>1</sup>
------------------------------	------------------------------	-----------------	------------------------------

<sup>1</sup> 15°, 30°, and 70° are not available with COB / Reflector.

## 7. BEAM ANGLE (LOWER MODULE)

**BB15** 15° <sup>1</sup>

**BB30** 30° <sup>1</sup>

**BB50** 50°

**BB70** 70° <sup>1</sup>

<sup>1</sup> 15°, 30°, and 70° are not available with COB / Reflector.

## 8. VOLTAGE

**V1** 120/277V

**V2** 240V <sup>1</sup>

**V3** 347V <sup>2</sup>

<sup>1</sup> Not available in North America.

<sup>2</sup> Only available with DA01 dimming.

## 9. DIMMING

**DA01** 0–10V Dimming 1.0%

**DA02** 0–10V Dimming 0.1% <sup>1</sup>

**DA20** DALI Dimming 0.1% <sup>1</sup>

**DA21** DALI Dimming 1.0% <sup>1</sup>

**DA30** DSI/switchDim <sup>1 2</sup>

**DA40** DMX Dimming <sup>1 3</sup>

<sup>1</sup> Not available with 347V. <sup>2</sup> Not available in North America. <sup>3</sup> Only available with CN4 canopy.

## 10. FIXTURE FINISH

**FA01** White

**FA02** Black Metallic – Textured

**FA20** Silver Metallic – Textured

**FA25** Gold Metallic – Textured

**FA44** Midnight Blue Metallic –  
Textured

**FA46** Charcoal Metallic –  
Textured

**FA47** Bronze Metallic – Textured

**FA53** Red Metallic – Textured

## 11. CANOPY

**CN1** Canopy A <sup>1</sup>

**CN2** Canopy B <sup>1</sup>

**CN3** Canopy C <sup>1 2</sup>

**CN4** Canopy D <sup>1 3</sup>

<sup>1</sup> Fits over a standard j-box (provided by others). <sup>2</sup> Use with V2 (240V) only. <sup>3</sup> Ordered with E1 (Emergency Integral) or DA40 (DMX Dimming).

## 12. CANOPY FINISH

**CF01** White

**CF02** Black Metallic – Textured

**CF20** Silver Metallic – Textured

**CF25** Gold Metallic – Textured

**CF44** Midnight Blue Metallic –  
Textured

**CF46** Charcoal Metallic –  
Textured

**CF47** Bronze Metallic – Textured

**CF53** Red Metallic – Textured

### 13. SNOOTS AND LOUVER (UPPER MODULE)

<b>NT1</b> Standard Snoot – Black <sup>1</sup>	<b>NT2</b> Standard Snoot – White <sup>1</sup>	<b>NT3</b> Long Snoot – Black <sup>1 2</sup>	<b>NT4</b> Long Snoot – White <sup>1 2</sup>
<b>NT5</b> Half Snoot – Black <sup>1 2</sup>	<b>NT6</b> Half Snoot – White <sup>1 2</sup>	<b>NT9</b> Hex Louver – Black <sup>2 3</sup>	

For precise beam angle and lumen output, please refer to the IES files. Note that using snoots and louvers may decrease overall efficacy. For COB/Reflector, the bezel finish matches the snoot finish.

<sup>1</sup> Snoot must be picked at time of order, if not ordering a louver. <sup>2</sup> Unavailable with COB / Reflector.

<sup>3</sup> Unavailable with BA70 beam angle. Available with Double Down version only.

### 14. SNOOTS AND LOUVER (LOWER MODULE)

<b>NU1</b> Standard Snoot – Black <sup>1</sup>	<b>NU2</b> Standard Snoot – White <sup>1</sup>	<b>NU3</b> Long Snoot – Black <sup>1 2</sup>	<b>NU4</b> Long Snoot – White <sup>1 2</sup>
<b>NU5</b> Half Snoot – Black <sup>1 2</sup>	<b>NU6</b> Half Snoot – White <sup>1 2</sup>	<b>NU9</b> Hex Louver – Black <sup>2 3</sup>	

For precise beam angle and lumen output, please refer to the IES files. Note that using snoots may decrease overall efficacy. For COB/Reflector, the bezel finish matches the snoot finish.

<sup>1</sup> Snoot must be picked at time of order, if not ordering a louver. <sup>2</sup> Unavailable with COB / Reflector. <sup>3</sup> Unavailable with BB70 beam angle.

### 15. EMERGENCY

<b>E0</b> Emergency system not required	<b>E1</b> Emergency system – Integral <sup>1</sup> <sup>2</sup>
---	--

<sup>1</sup> Integral emergency in the lower module only, drivers are in the canopy. Not available with 347V. Two power cables will be supplied.

<sup>2</sup> CN4 canopy only used when ordering emergency or DMX. Two power cables supplied.

### 16. SEPARATE SWITCHING

<b>CS1</b> Single circuit	<b>CS2</b> Separate switching <sup>1</sup>
---------------------------	--

<sup>1</sup> Two power cables will be supplied.

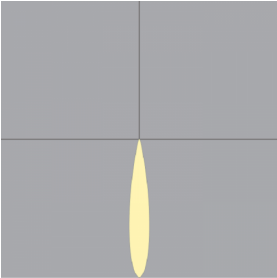
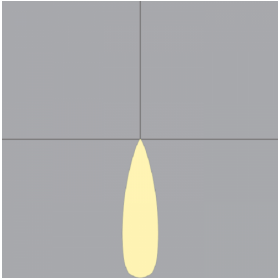
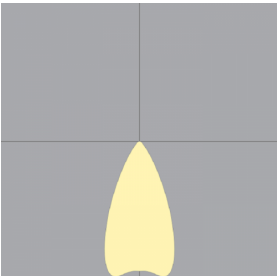
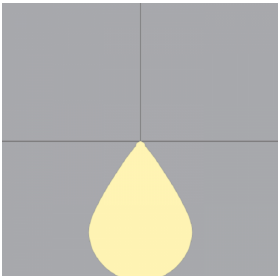
7 TECHNICAL DATA

LUMINAIRE

All data shown at max output and nominal values.

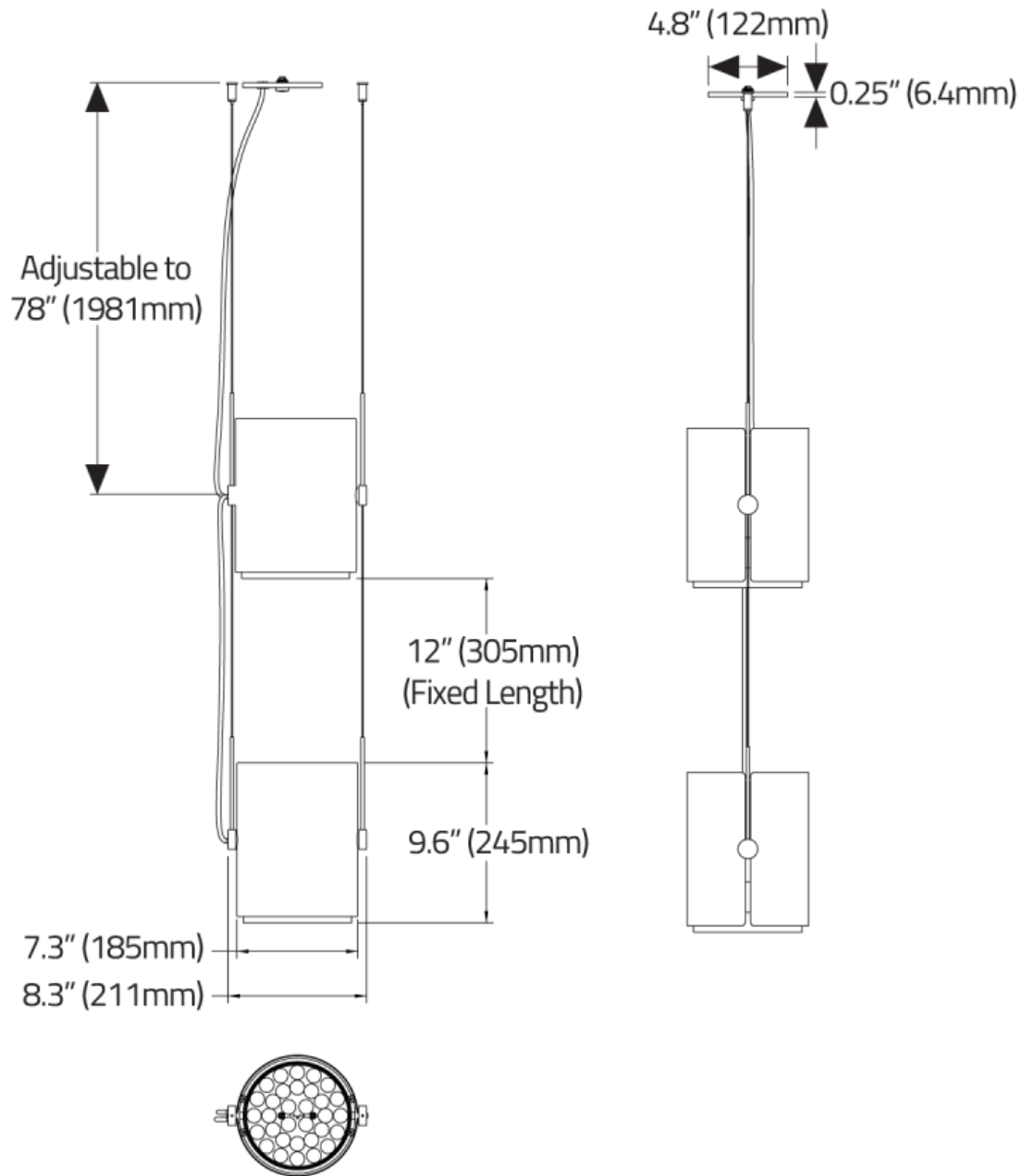
Code	MRDP1P01	MRDP2P01	MRDP3P01	MRDP1P02	MRDP2P02	MRDP3P02
Light Direction	Double Down	Direct/Indirect	Double Up	Double Down	Direct/Indirect	Double Up
Max Wattage	186W	186W	186W	88W	88W	88W
Max Delivered lms	20100	20100	20100	10050	10050	10050
Max LPW	124	124	124	111	111	111

8 PERFORMANCE DATA

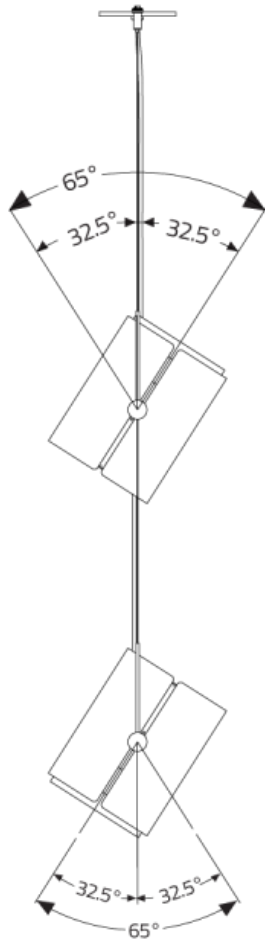
DIRECT 15° BEAM ANGLE	WATTS	LUMENS	LPW	DIRECT 30° BEAM ANGLE	WATTS	LUMENS	LPW
	38 82 130 186	5000 9800 14800 20000	132 121 114 106		38 82 130 186	5000 10050 15000 20100	135 124 116 108
DIRECT 50° BEAM ANGLE	WATTS	LUMENS	LPW	DIRECT 70° BEAM ANGLE	WATTS	LUMENS	LPW
	38 82 130 186	4800 9600 14200 19000	128 117 110 102		38 82 130 186	4800 9600 14400 19200	129 118 111 103

9 DIMENSIONAL DIAGRAMS

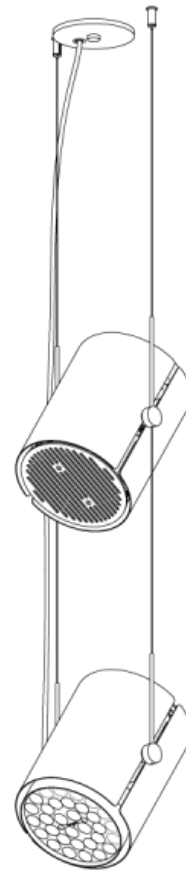
FIXTURE PROFILE



DIRECT/INDIRECT



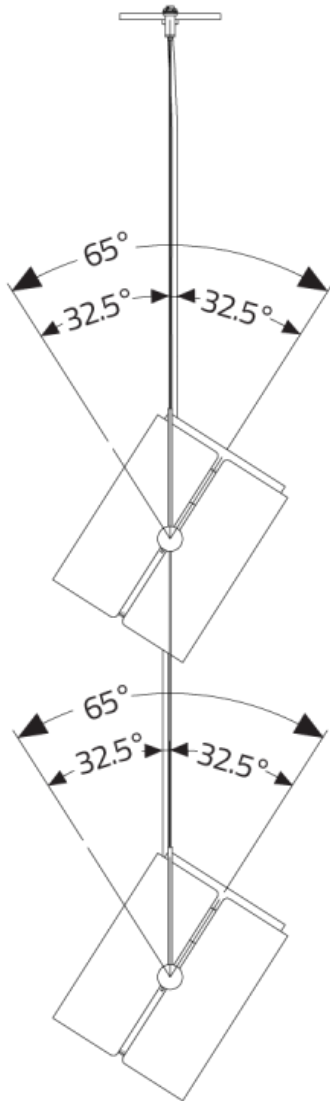
ISOMETRIC BOTTOM VIEW  
(STRAIGHT)



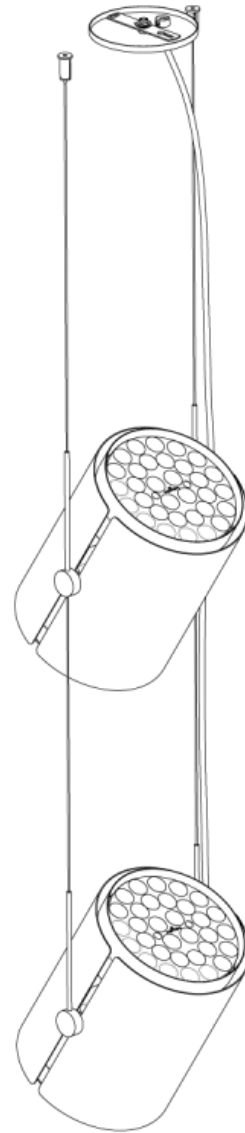
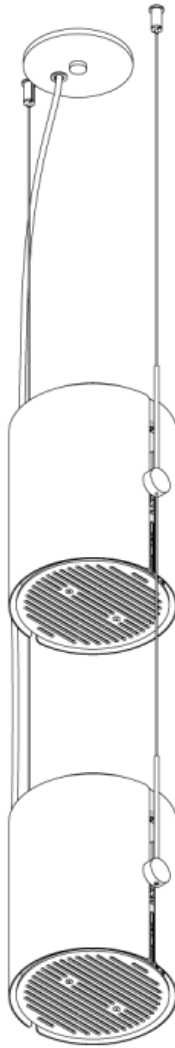
ISOMETRIC VIEW  
(ANGLED)



DOUBLE UP

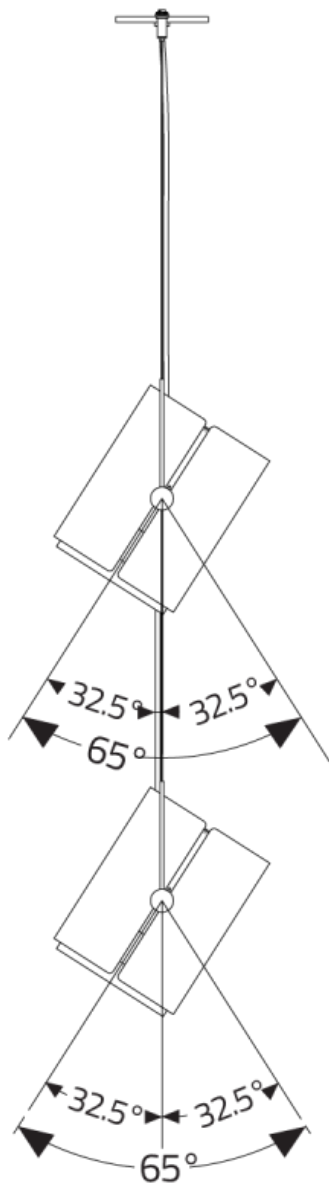


ISOMETRIC BOTTOM VIEW  
(STRAIGHT)

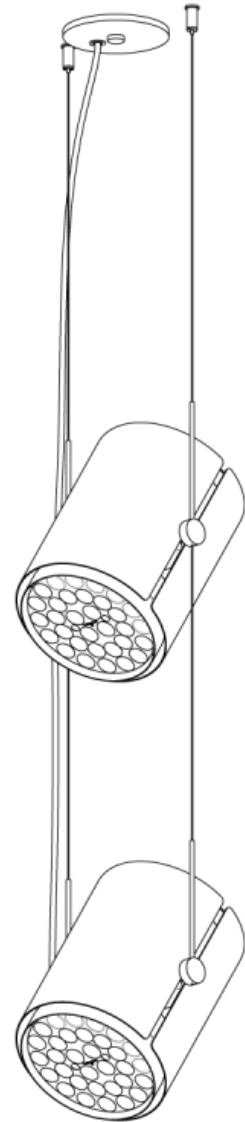
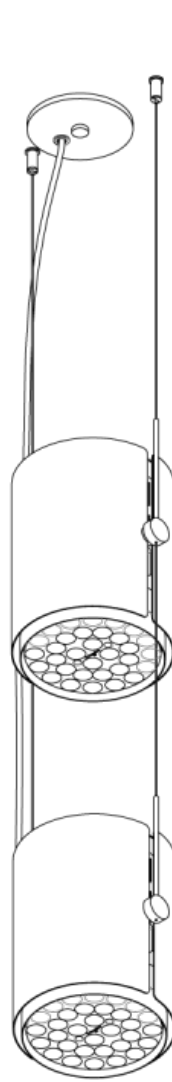


ISOMETRIC VIEW  
(ANGLED)

DOUBLE DOWN

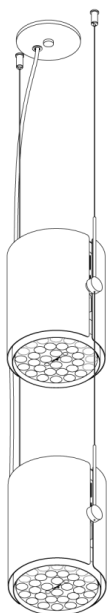


ISOMETRIC BOTTOM VIEW  
(STRAIGHT)

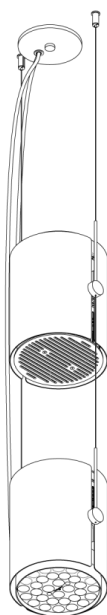


ISOMETRIC VIEW  
(ANGLED)

SEPARATE SWITCHING (CS1, CS2)



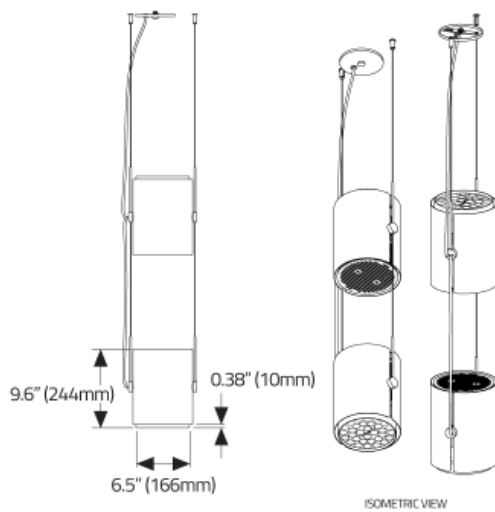
SINGLE SWITCHING



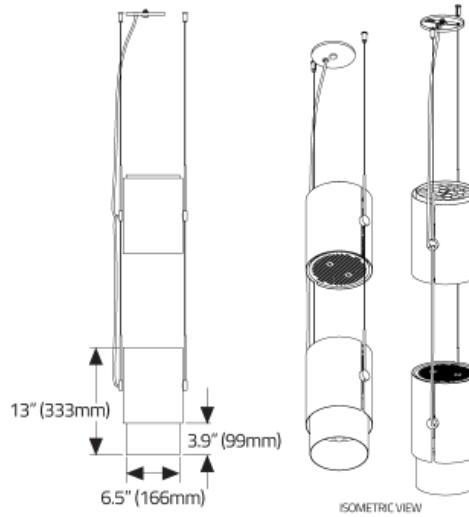
SEPARATE SWITCHING  
(Two power cables supplied)



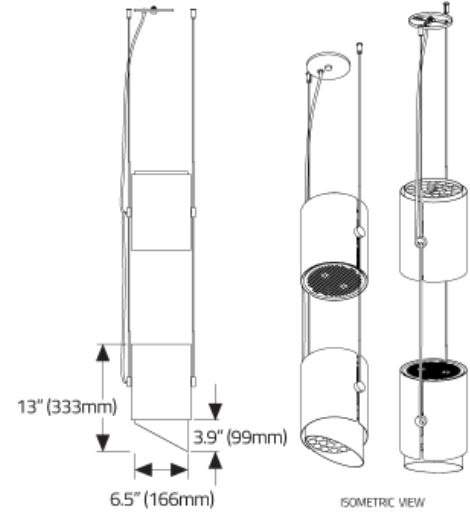
SNOOTS



STANDARD SNOOT



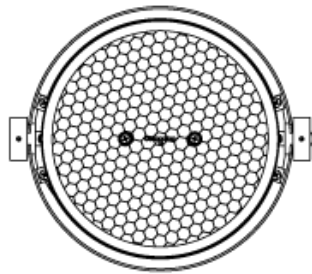
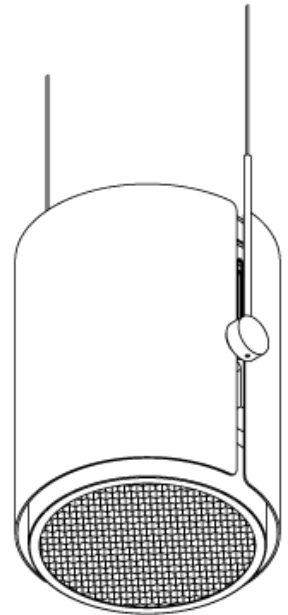
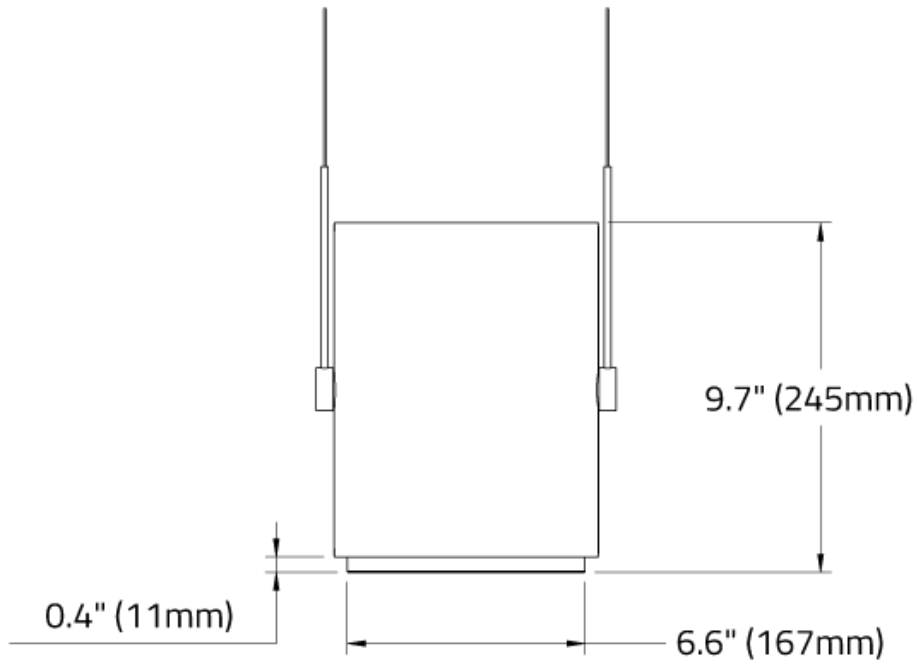
LONG SNOOT



HALF SNOOT

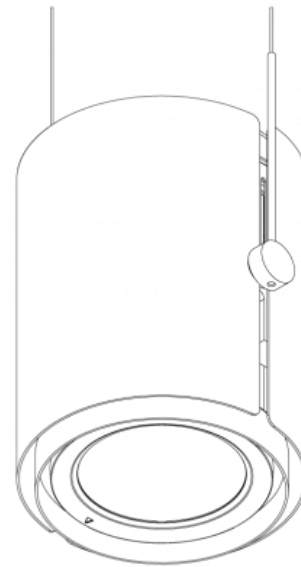
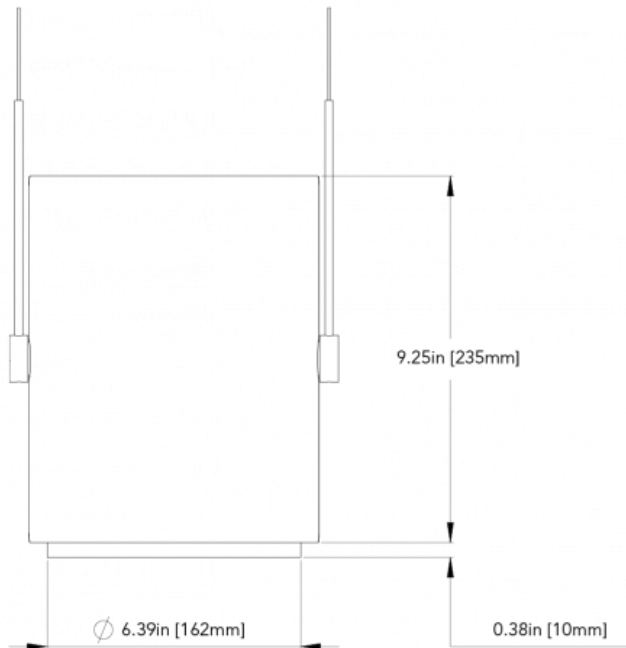
LOUVRE

HEX CELL LOUVRE



Matrex Round PD - COB

## Matrex RD PD - COB



Isometric View

