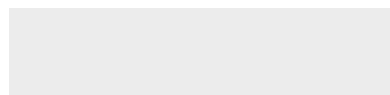


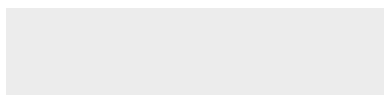


MICRO ELLIPSE II™

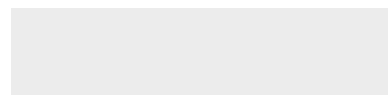
FULL SPECIFICATION SHEET



FIXTURE TYPE



FIXTURE CODE



QUANTITIES

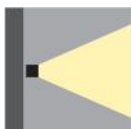
1 DESCRIPTION

No shape is more graceful than the ellipse. Featuring an ultra-sleek design with a 1" profile and lengths ranging from 3' to 6', **MICRO ELLIPSE II** is ideal for creating a lasting impression. Embellish a wall using multiple luminaires combined with a halo effect of indirect lighting. This dynamic shape offers direct or indirect light, providing versatility for unique illuminating effects. Boasting a high-efficiency, flexible lens that snugly fits the frame, **MICRO ELLIPSE II** eliminates any light leakage while ensuring a uniform and seamless diffusion of light. Whether used as a solitary statement piece or in a composition, **MICRO ELLIPSE II's** impact is undeniable, particularly notable for the ambient halo effect it casts with its indirect lighting. Moreover, **MICRO ELLIPSE II** addresses acoustic needs with an optional acoustic panel for sizes up to 4' in length. These panels are designed to reduce echo and reverberation commonly found in modern open-plan spaces, areas with exposed concrete, open ceilings, and large windows. For a touch of whimsy and creative flair, **MICRO ELLIPSE II** can be combined with other shapes like MICRO RING, MICRO TRIANGLE or MICRO QUAD, adding a dynamic and playful dimension to any space.

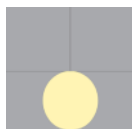
2 OPTICS & FEATURES



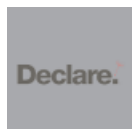
Ceiling Direct



Wall Direct



General Diffuse



Declare



PoE

3 APPROVALS

ADA



CE



DAMP
LOCATION



IP20

4 GENERAL SPECIFICATION

BODY AND TRIM

Aluminium.

FINISH

Powder coated.

LENS

Protruding Lens 0.08: (2.1mm).

SENSORS

Consult factory regarding sensor compatibility.

REMOTE EMERGENCY

Emergency option provides a 1.5 hour (3 hours for EU) emergency lighting facility. The remote system includes the inverter module, NiCad batteries and a remote wall/ceiling LED charge indicator and test switch (NA only) Maximum distance between wall/ceiling plate and luminaire is 15' (4.5m). Test switch fits a single gang box (not supplied).

DRIVERS

Remote, HPF electronic drivers for 120–277V (EU–240V). Wire size 18 AWG – max distance (from fixture to drivers) 40' (12.2m), wire size 16 AWG – max distance 60' (18.3m), wire size 14 AWG – max distance 90' (27.4m). Drivers must be accessible after installation. For longer remote distances, consult factory.

POE

Micro Ellipse II can integrate into your data network via Power over Ethernet (PoE) connectivity.

DELIVERED LUMENS

Delivered lumens & LPW based on 4000K (min 80 CRI).

REPORTED L70 @25°C(77°F)

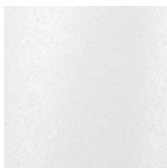
> 60,000 hrs.

APPROVALS

Damp Rated.

5 DESIGN OPTIONS

FIXTURE FINISH



White



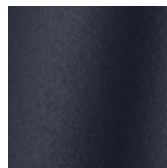
Black
Metallic –
Textured



Silver
Metallic –
Textured



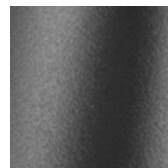
Gold Metallic
– Textured



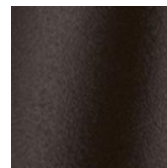
Midnight
Blue Metallic
– Textured



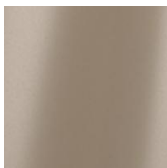
Copper
Metallic



Charcoal
Metallic –
Textured



Bronze
Metallic –
Textured



Champagne
Metallic

6 HOW TO ORDER

1. LUMINAIRE

METC1C03 3ft, 2300 lms **METC1C04** 4ft, 3200 lms **METC1C05** 5ft, 4100 lms **METC1C06** 6ft, 4800 lms

2. LUMENS

LMA17 175 lm/ft **LMA26** 260 lm/ft **LMA35** 350 lm/ft

¹ 50% of total output. ² 75% of total output. ³ 100% total output.

3. CRI

CR80 CRI 80+ **CR90** CRI 90+

4. CCT

CTA27 2700K **CTA30** 3000K **CTA35** 3500K **CTA40** 4000K

5. VOLTAGE

V1 120/277V **V2** 240V ¹ **V3** 347V ² **V4** Low Voltage ³

¹ Not available in North America. ² Available with DA01 dimming only. ³ Available with DA45 dimming only.

6. DIMMING (REMOTE)

DA01 0–10V Dimming 1.0% **DA20** DALI Dimming 0.1% ¹ **DA21** DALI Dimming 1.0% ¹ **DA45** PoE ²

¹ Not available with V3. ² Available with V4 only.

7. FIXTURE FINISH

FA01 White **FA02** Black Metallic – Textured **FA20** Silver Metallic – Textured **FA25** Gold Metallic – Textured
FA44 Midnight Blue Metallic – Textured **FA45** Copper Metallic **FA46** Charcoal Metallic – Textured **FA47** Bronze Metallic – Textured
FA52 Champagne Metallic

8. EMERGENCY

E0 Not required **E2** Emergency system – Remote

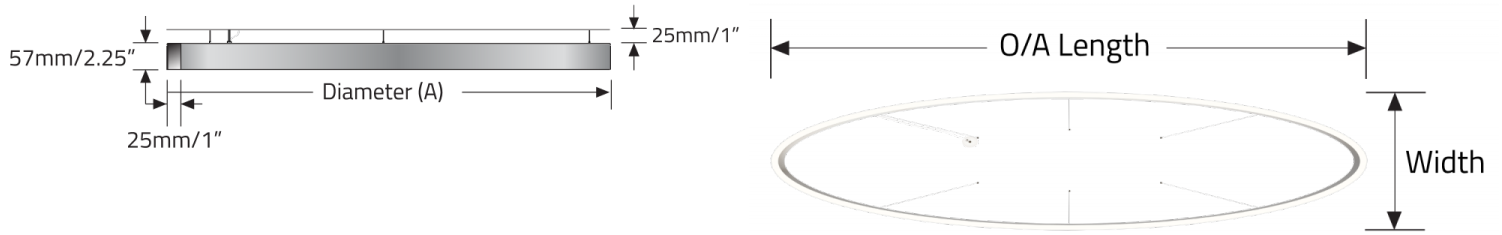
7

PERFORMANCE DATA

METC1C03 O/A Length x Width 36" x 16"	Lumens	Watts	LPW	METC1C04 O/A Length x Width 48" x 19"	Lumens	Watts	LPW
LMA17	1100	17	68	LMA17	1600	23	68
LMA26	1700	25	68	LMA26	2400	35	68
LMA35	2300	35	67	LMA35	3200	48	67

METC1C05 O/A Length x Width 60" x 22"	Lumens	Watts	LPW	METC1C06 O/A Length x Width 72" x 25"	Lumens	Watts	LPW
LMA17	2100	30	69	LMA17	2400	35	69
LMA26	3100	45	68	LMA26	3600	53	68
LMA35	4100	61	67	LMA35	4800	71	67

8 DIMENSIONAL DIAGRAMS



O/A Length X Width:

914mm/36" X 406mm/16"

1219mm/48" X 483mm/19"

1524mm/60" X 559mm/22"

1829mm/72" X 635mm/25"