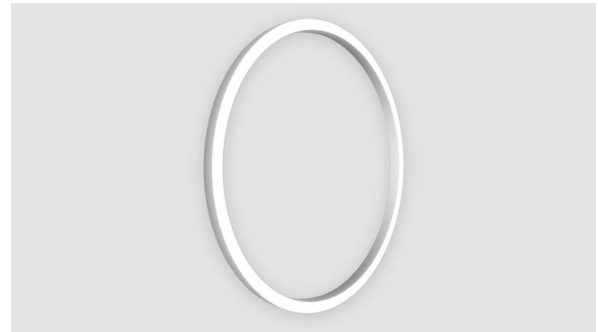




# MICRO RING™

## FULL SPECIFICATION SHEET



FIXTURE TYPE



FIXTURE CODE

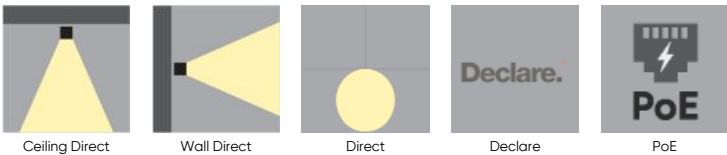


QUANTITIES

### 1 DESCRIPTION

With a super slim profile and 5 diameters ranging from 2' to 6', **MICRO RING** is ideal for creating sizable cascaded circular arrangements on a ceiling or wall. The ring emits direct light and can be coordinated with 4 other emission options in the **MICRO RING** family to create unique lighting effects. The buoyant and energetic nature of the ring makes MICRO RING just as impactful as a single standalone piece. For a whimsical style, combine **MICRO RING** with MICRO TRIANGLE or MICRO QUAD. This powerful luminaire can reach up to 14,100 lumens in output and is available in 9 distinct finish options.

### 2 OPTICS & FEATURES



Ceiling Direct

Wall Direct

Direct

Declare

PoE

### 3 APPROVALS



**4 GENERAL SPECIFICATION**

**BODY AND TRIM**

Aluminium.

**POE**

Micro Ring can integrate into your data network via Power over Ethernet (PoE) connectivity.

**REMOTE EMERGENCY**

Emergency option provides a 1.5 hour (3 hours for EU) emergency lighting facility. The remote system includes the inverter module, NiCad batteries and a remote wall/ceiling LED charge indicator and test switch (NA only) Maximum distance between wall/ceiling plate and luminaire is 15' (4.5m). Test switch fits a single gang box (not supplied).

**DELIVERED LUMENS**

Delivered lumens & LPW based on 4000K (min 80 CRI).

**REPORTED L70 @25°C(77°F)**

> 60,000 hrs.

**SUSTAINABILITY**

Designed for on-site LED board, driver, and optic replacement. Contact the factory for maintenance documentation.

**FINISH**

Powder coated.

**SENSORS**

Consult factory regarding sensor compatibility.

**DRIVERS**

Remote, HPF electronic drivers for 120–277V (EU–240V) dimming. Wire size 18 AWG – max distance (from fixture to drivers) 40' (12.2m), wire size 16 AWG – max distance 60' (18.3m), wire size 14 AWG – max distance 90' (27.4m). Drivers must be accessible after installation.

**LENS**

Protruding Lens 0.08"(2.1mm).

**APPROVALS**

Damp Rated.

**5 DESIGN OPTIONS**

**FINISH**



White



Black Metallic - Textured



Silver Metallic - Textured



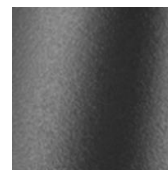
Gold Metallic - Textured



Midnight Blue Metallic - Textured



Copper Metallic



Charcoal Metallic - Textured



Bronze Metallic - Textured



Champagne Metallic

**6 HOW TO ORDER**

**1. LUMINAIRE**

**MRRC1C02** 2ft, 4600 lms      **MRRC1C03** 3ft, 6900 lms      **MRRC1C04** 4ft, 8800 lms      **MRRC1C05** 5ft, 12000 lms  
**MRRC1C06** 6ft, 14100 lms

**2. EFFICIENCY**

**EFF1** Standard efficiency <sup>1</sup>      **EFF2** High efficiency <sup>2</sup>

<sup>1</sup> Standard efficiency refers to Standard efficacy. <sup>2</sup> High efficiency refers to High efficacy (52% more efficient than Standard efficiency).

**3. LUMENS**

**LPF017** 175 lm/ft <sup>1 2</sup>      **LPF026** 260 lm/ft <sup>1 2 3</sup>      **LPF035** 350 lm/ft <sup>1 2 4</sup>      **LPF052** 525 lm/ft <sup>2 5</sup>  
**LPF075** 750 lm/ft <sup>2 6</sup>

<sup>1</sup> Standard efficiency is available from 175 lm/ft to 350 lm/ft. <sup>2</sup> High efficiency is available from 175 lm/ft to 750 lm/ft.

**4. CRI**

**CR80** CRI 80+      **CR90** CRI 90+

**5. CCT**

**CTA27** 2700K      **CTA30** 3000K      **CTA35** 3500K      **CTA40** 4000K

**6. VOLTAGE**

**V1** 120/277V      **V2** 240V <sup>1</sup>      **V3** 347V <sup>2</sup>      **V4** Low Voltage <sup>3</sup>

<sup>1</sup> Not available in North America. <sup>2</sup> Available with DA01 dimming only. <sup>3</sup> Available with DA45 dimming only.

**7. DIMMING (REMOTE)**

**DA01** 0-10V Dimming 1.0%      **DA20** DALI Dimming 0.1% <sup>1</sup>      **DA21** DALI Dimming 1.0% <sup>1</sup>      **DA45** PoE <sup>2</sup>

<sup>1</sup> Not available with V3. <sup>2</sup> Available with V4 only.

**8. FINISH**

**FA01** White      **FA02** Black Metallic – Textured      **FA20** Silver Metallic – Textured      **FA25** Gold Metallic – Textured  
**FA44** Midnight Blue Metallic – Textured      **FA45** Copper Metallic      **FA46** Charcoal Metallic – Textured      **FA47** Bronze Metallic – Textured  
**FA52** Champagne Metallic

**9. EMERGENCY**

E0 Not required

E2 Emergency system – Remote

**7 PERFORMANCE DATA**

<b>MRRRC1C02-EFF1</b>			<b>Lumens</b>	<b>Watts</b>	<b>LPW</b>	<b>MRRRC1C02-EFF2</b>			<b>Lumens</b>	<b>Watts</b>	<b>LPW</b>
LPF017	1100	16	69	LPF017	1100	10	105				
LPF026	1600	24	68	LPF026	1600	16	105				
LPF035	2200	32	67	LPF035	2200	21	104				
				LPF052	3300	33	101				
				LPF075	4600	48	97				

<b>MRRRC1C03-EFF1</b>			<b>Lumens</b>	<b>Watts</b>	<b>LPW</b>	<b>MRRRC1C03-EFF2</b>			<b>Lumens</b>	<b>Watts</b>	<b>LPW</b>
LPF017	1600	23	69	LPF017	1600	16	104				
LPF026	2400	36	68	LPF026	2400	23	104				
LPF035	3200	48	67	LPF035	3200	31	104				
				LPF052	4900	49	101				
				LPF075	6900	71	97				

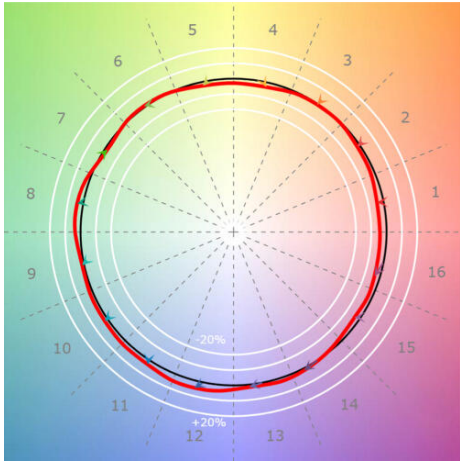
<b>MRRRC1C04-EFF1</b>			<b>Lumens</b>	<b>Watts</b>	<b>LPW</b>	<b>MRRRC1C04-EFF2</b>			<b>Lumens</b>	<b>Watts</b>	<b>LPW</b>
LPF017	2100	30	69	LPF017	2100	20	104				
LPF026	3100	46	68	LPF026	3100	30	104				
LPF035	4100	62	67	LPF035	4100	40	104				
				LPF052	6300	63	100				
				LPF075	8800	92	96				

<b>MRRRC1C05-EFF1</b>			<b>Lumens</b>	<b>Watts</b>	<b>LPW</b>	<b>MRRRC1C05-EFF2</b>			<b>Lumens</b>	<b>Watts</b>	<b>LPW</b>
LPF017	2800	41	69	LPF017	2800	27	104				
LPF026	4300	63	68	LPF026	4300	41	104				
LPF035	5600	84	67	LPF035	5600	54	104				
				LPF052	8500	85	100				
				LPF075	12000	124	97				

<b>MRRRC1C06-EFF1</b>			<b>Lumens</b>	<b>Watts</b>	<b>LPW</b>	<b>MRRRC1C06-EFF2</b>			<b>Lumens</b>	<b>Watts</b>	<b>LPW</b>
LPF017	3300	48	69	LPF017	3300	32	104				
LPF026	5000	74	68	LPF026	5000	48	104				
LPF035	6600	99	67	LPF035	6600	64	104				
				LPF052	10100	101	100				
				LPF075	14100	147	96				

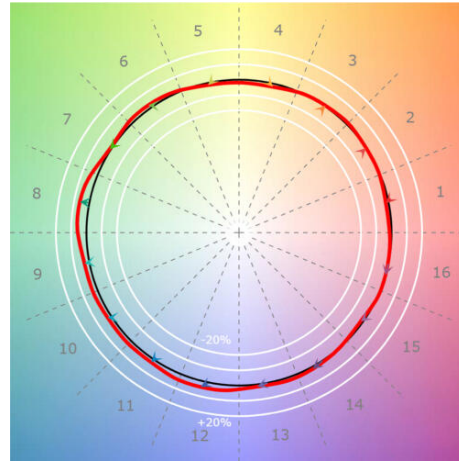
8 TM-30 DATA

**CCT 2700K**



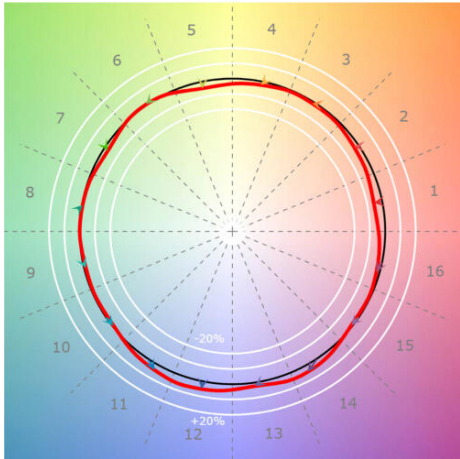
<b>CRI(Ra)</b>	94
<b>CRI(R9)</b>	58
<b>TM30(Rf)</b>	93
<b>TM30(Rg)</b>	99
<b>Duv</b>	0.0004

**CCT 3000K**



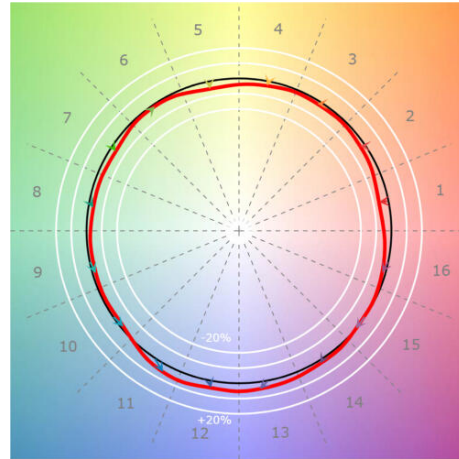
<b>CRI(Ra)</b>	94
<b>CRI(R9)</b>	75
<b>TM30(Rf)</b>	93
<b>TM30(Rg)</b>	102
<b>Duv</b>	-0.0001

**CCT 3500K**



<b>CRI(Ra)</b>	94
<b>CRI(R9)</b>	53
<b>TM30(Rf)</b>	91
<b>TM30(Rg)</b>	98
<b>Duv</b>	0.0009

**CCT 4000K**



<b>CRI(Ra)</b>	92
<b>CRI(R9)</b>	50
<b>TM30(Rf)</b>	89
<b>TM30(Rg)</b>	97
<b>Duv</b>	0.0011

9 DIMENSIONAL DIAGRAMS

