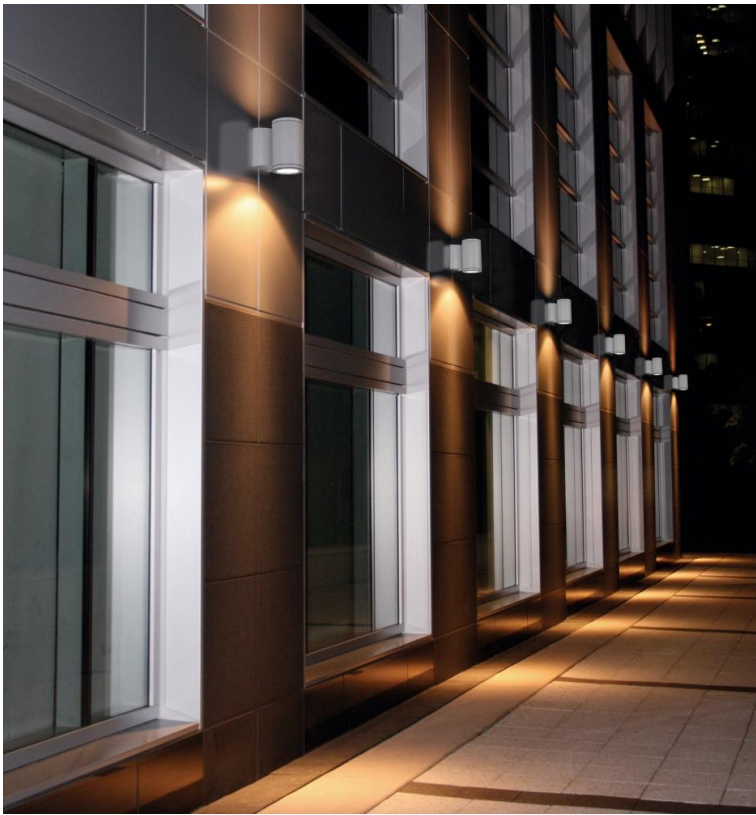
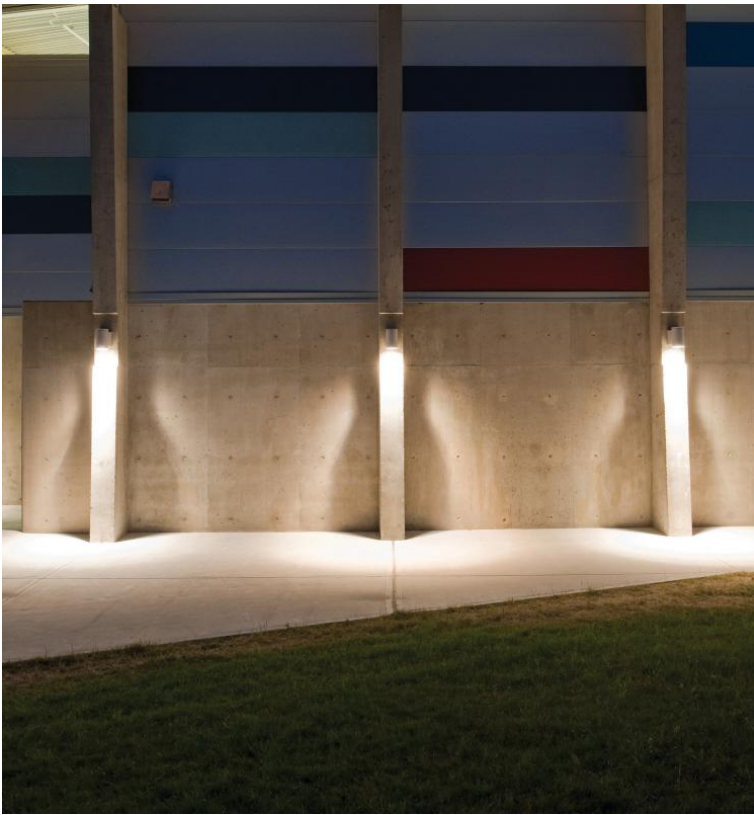


ONE4TWO™ - MEDIUM - WALL

Project Name:	Fixture Type:
Fixture Code:	Quantities:



ONE4TWO™ - MEDIUM - WALL



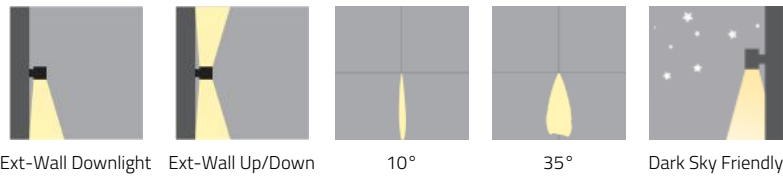
ONE4TWO™ - MEDIUM - WALL

ONE4TWO is a facade light designed with a robust cylindrical aesthetic and engineered with exceptional power in both light output and optical control. Available with two lumen packages with either narrow or medium beams. An internal reflector ensures efficient light distribution allowing the cylinder to be mounted at higher elevations for wayfinding or to accent facade features.

GENERAL SPECIFICATION

Housing Die-cast and extruded aluminium.	External Screws Stainless steel.
Lens Clear glass.	Gaskets One piece silicone.
Finish Silver powder coated light gray or black coated as standard.	Reflector High purity aluminium, silver anodised.
Drivers HPF, electronic for 120-277V (EU-240V).	Minimum Starting Temperature -20° C.
Delivered Lumens Delivered lumens & LPW based on 3000K (min 80 CRI).	Weight Maximum 8.8lb.
Dark Sky Friendly Dark Sky Friendly if ordered with 3000K CCT and direct only.	

OPTICS & FEATURES



ONE4TWO™ - MEDIUM - WALL

HOW TO ORDER

A. LUMINAIRE

267033 10° up + 35° down, 2098 lms **267013** 10° up + 10° down, 2098 lms **267023** 35° up + 35° down, 2098 lms **267113** 10° down, 1049 lms
267123 35° down, 1049 lms

B. CCT

30 3000K (min 80 CRI) **40** 4000K (min 80 CRI)

C. FINISH

BL Black Metallic Textured **GR** Light Gray

D. DIMMING

DB Dimming (0-10V, 10%) ¹

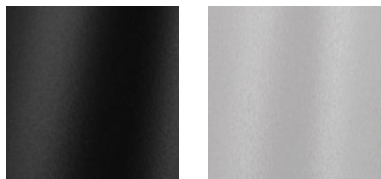
¹ Dimming is equal to less than 10%.

TECHNICAL DATA

LUMINAIRE

Code	267033	267013	267023	267113	267123
Power (LED)	2 x 14W	2 x 14W	2 x 14W	14W	14W
Delivered lms	2098	2098	2098	1049	1049
Distribution	10° up + 35° down	10° up + 10° down	35° up + 35° down	10° down	35° down

FINISH



Black Metallic Textured Light Gray

APPROVALS



ONE4TWO™ - MEDIUM - WALL

DIMENSIONAL DIAGRAMS

