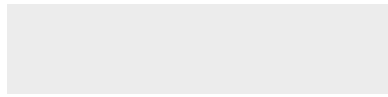
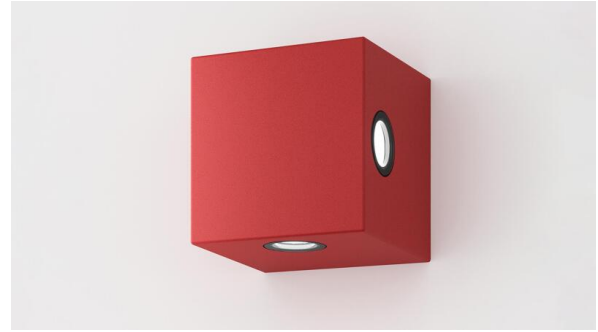


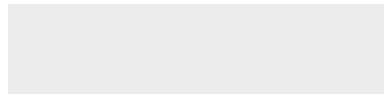


# RAZER CUBE™

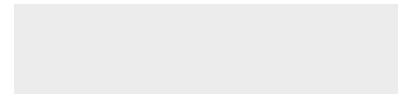
## SHORT SPECIFICATION SHEET



FIXTURE TYPE



FIXTURE CODE



QUANTITIES

### 1 HOW TO ORDER

#### 1. LUMINAIRE

**RARC1W01** 1 Sided

**RARC1W02** 2 Sided

**RARC1W03** 3 Sided

**RARC1W04** 4 Sided

#### 2. BEAM ANGLE (DOWNLIGHT)

**BA03** 3°

**BA75** 75°

#### 3. BEAM ANGLE (UPLIGHT)

**BB00** Not required

**BB03** 3°

**BB75** 75°

#### 4. BEAM ANGLE (LEFT)

**BC00** Not required

**BC03** 3°

**BC75** 75°

#### 5. BEAM ANGLE (RIGHT)

**BD00** Not required

**BD03** 3°

**BD75** 75°

#### 6. CRI

**CR80** CRI 80+

#### 7. CCT

**CTA27** 2700K

**CTA30** 3000K

**CTA35** 3500K

**CTA40** 4000K

## 8. VOLTAGE

V1 120/277V

V2 240V<sup>1</sup>

<sup>1</sup> Not available in North America.

## 9. DIMMING

DA06 0-10V Dimming<sup>1</sup>

<sup>1</sup> Dimming is equal to or less than 10%.

## 10. FINISH

FA01 White

FA02 Black Metallic - Textured

FA20 Silver Metallic - Textured

FA27 Wood grain - Light Cherry<sup>1</sup>

FA28 Wood grain - Dark Walnut<sup>1</sup> FA30 Wood grain - White Oak<sup>1</sup>

FA44 Midnight Blue Metallic -  
Textured

FA46 Charcoal Metallic -  
Textured

FA47 Bronze Metallic - Textured FA53 Red Metallic - Textured

<sup>1</sup> Wood grain finishes may incur longer lead times and setup charges. Consult factory for details.