

RING™ - CEILING

Project Name:

Fixture Type:

Fixture Code:

Quantities:



RING™ - CEILING



RING™ - CEILING

No shape evokes the feeling of harmony, community, and perfection as the circle. The closed curve of **RING** draws warmth from any space or brings a sense of movement, power, and energy. Diameters range from 2 to 7 feet with optional indirect light to add a halo effect.

RING is available in 12 finishes which were selected based on their versatility to a variety of color schemes. Metallic sheens balance out the functional forms with elegance. The wood finishes ground the space with a feeling of warmth.

GENERAL SPECIFICATION

Body and trim

Steel and aluminium.

Diffusers

Opal Polycarbonate, supplied in sections.

Integral Emergency system

Emergency option provides a 1.5 hour (3 hours for EU) emergency lighting facility.

The self contained system includes the inverter module, NiCad batteries, LED charge indicator and test switch (NA only). Not available with a 347V supply.

Drivers

Integral, HPF electronic drivers for 120-277V (EU-240V). The driver is integral to the fixture housing.

Delivered Lumens

Delivered lumens & LPW based on 4000K (min 80 CRI).

Approvals

Damp Rated.

Finish

Powder coated.

Sensors

Consult factory regarding sensor compatibility.

Drivers: RGBW

Integral HPF electronic drivers/DMX interfaces for 120-277V (EU-240V).

Luminaires require a DMX controller by others.

Mechanical

Luminaires mount directly over J box (by others - North America only).

L70 @25°C

> 50,000 hrs.

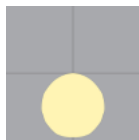
MOUNTING & OPTICS



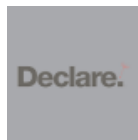
Ceiling Direct



RGBW



Direct



Declare

RING™ - CEILING

HOW TO ORDER

A. LUMINAIRE

RNGF1P02 2ft, 6000 lms
RNGF1P06 6ft, 21000 lms

RNGF1P03 3ft, 10000 lms
RNGF1P07 7ft, 26000 lms

RNGF1P04 4ft, 14000 lms

RNGF1P05 5ft, 18000 lms

Note: Recommended for installation on a hard ceiling.

B. LM/FT

LPF055 550 lm/ft¹

LPF082 825 lm/ft²

LPF110 1100 lm/ft³

¹ Based on 50% of total output.

² Based on 75% of total output.

³ 100% of total output.

C. CRI

CR80 CRI 80+

D. CCT

CTA27 2700K
CTA50 RGBW

CTA30 3000K

CTA35 3500K

CTA40 4000K

E. VOLTAGE

V1 120/277V

V2 240V¹

V3 347V²

¹ Not available in North America.

² Available with DA01 dimming only. Not available with CTA50

F. DIMMING

DA01 0-10V Dimming 1.0%
DA30 DSI/switchDim^{1 2}

DA02 0-10V Dimming 0.1%¹
DA40 DMX Dimming¹

DA20 DALI Dimming 0.1%¹

DA21 DALI Dimming 1.0%¹

¹ Not available with V3.

² Not available in North America.

G. FINISH

FA01 White
FA27 Wood grain - Light Cherry¹
FA46 Charcoal Metallic - Textured

FA02 Black Metallic - Textured
FA28 Wood grain - Dark Walnut¹
FA47 Bronze Metallic - Textured

FA20 Silver Metallic - Textured
FA44 Midnight Blue Metallic - Textured
FA52 Champagne Metallic

FA25 Gold Metallic - Textured
FA45 Copper Metallic
FA53 Red Metallic - Textured

¹ Longer than normal lead times may apply, consult factory.

H. EMERGENCY

E0 Not required

E1 Emergency system - Integral¹

¹ Not available with 347V

RING™ - CEILING

TECHNICAL DATA

LUMINAIRE

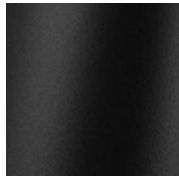
Note: Recommended for installation on a hard ceiling.

Code	RNGF1P02	RNGF1P03	RNGF1P04	RNGF1P05	RNGF1P06	RNGF1P07
Diameter (A)	2ft	3ft	4ft	5ft	6ft	7ft
Wattage	65W	101W	138W	180W	216W	260W
Delivered lms	6000	10000	14000	18000	21000	26000
LPW	100	100	100	100	100	100

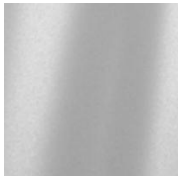
FINISH



White



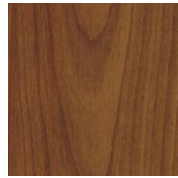
Black Metallic -
Textured



Silver Metallic -
Textured



Gold Metallic -
Textured



Wood grain - Light
Cherry ¹



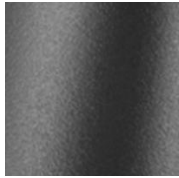
Wood grain - Dark
Walnut ¹



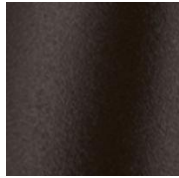
Midnight Blue Metallic -
Textured



Copper Metallic



Charcoal Metallic -
Textured



Bronze Metallic -
Textured



Champagne Metallic



Red Metallic -
Textured

¹ Longer than normal lead times may apply, consult factory.

APPROVALS



DAMP
LOCATION



IP20

RING™ - CEILING

DIMENSIONAL DIAGRAMS

