

RING DISC™

Project Name:

Fixture Type:

Fixture Code:

Quantities:



RING DISC™

The RING DISC represents a refined evolution of luminaire design, offering a streamlined alternative to the classic disc form factor. With its ultra-thin profile and minimalist aesthetic, RING DISC blends seamlessly into the architectural environment, providing soft, even illumination without overwhelming the space design. This fixture's understated elegance allows it to enhance the ambiance subtly, contributing to a cohesive and harmonious atmosphere. Ideal for those seeking a sophisticated lighting solution, RING DISC delivers all the benefits of contemporary lighting technology in a sleek, unobtrusive form, setting a new standard for architectural integration.

GENERAL SPECIFICATION

Body and trim

Steel and aluminum.

Suspension

P.O.S. Power over suspension cable.

Remote Emergency system

Emergency option provides a 1.5 hour (3 hours for EU) emergency lighting facility.

The remote system includes the inverter module, NiCad batteries and a remote wall/ceiling LED charge indicator and test switch (NA only) Maximum distance between wall/ceiling plate and luminaire is 15' (4.5m). Test switch fits a single gang box (not supplied).

PoE

Ring can integrate into your data network via Power over Ethernet (PoE) connectivity.

Delivered Lumens

Delivered lumens & LPW based on 4000K (min 90 CRI).

Approvals

Damp Location (Indoor use only).

Finish

Powder coated.

Diffusers

Optical grade clear polymethyl methacrylate.

Drivers

Remote, HPF electronic drivers for 120-277V (EU-240V) dimming. Wire size 18 AWG - max distance (from fixture to drivers) 40' (12.2m), wire size 16 AWG - max distance 60' (18.3m), wire size 14 AWG - max distance 90' (27.4m). Drivers must be accessible after installation. Drivers are either remote mounted or integral to the canopy.

Mechanical

Luminaires mount directly over J box (by others - North America only).

Reported L70 @25°C (77°F)

> 50,000 hrs.

Design

US Design Patent Pending.

MOUNTING & OPTICS



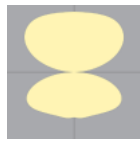
Suspended Direct



Suspended Direct/Indirect



Direct



Dir-Indirect



Declare



PoE



RING DISC™

HOW TO ORDER

A. LUMINAIRE TYPE

RNDP Pendant

B. ILLUMINATED OR NON-ILLUMINATED

LTD1 Illuminated

LTD2 Non-Illuminated

C. DIAMETER

SL03 3ft, 9000 lms

SL04 4ft, 12000 lms

D. DISTRIBUTION

DR0 Not required

DR1 Direct 100%

DR2 Direct 48% / Indirect 52%

E. LUMENS

LMA0000 Not required

LMA0170 1700 lms

LMA0230 2300 lms

LMA0300 3000 lms

LMA0340 3400 lms

LMA0460 4600 lms

LMA0520 5200 lms

LMA0610 6100 lms

LMA0690 6900 lms

LMA0900 9000 lms

LMA0920 9200 lms

LMA1205 12050 lms

F. CRI

CR00 Not required

CR90 CRI 90+

G. CCT

CTA00 Not required

CTA27 2700K

CTA30 3000K

CTA35 3500K

CTA40 4000K

H. VOLTAGE

V0 Not required

V1 120/277V

V2 240V ¹

V3 347V ²

V4 Low Voltage ³

¹ V2 not available in North America.

² V3 available with DA01 dimming only.

³ V4 available with DA45 dimming only.

I. DIMMING (REMOTE)

DA00 Not required

DA01 0-10V Dimming 1.0%

DA02 0-10V Dimming 0.1% ¹

DA20 DALI Dimming 0.1% ¹

DA21 DALI Dimming 1.0% ¹

DA30 DSI/switchDim ^{1 2}

DA45 PoE ³

¹ Not available with V3 or V4.

² DA30 not available in North America

³ DA45 used V4 only.

J. SUSPENSION

SS1 Vertical, Aircraft Cable ²

SS2 Hub, Aircraft Cable ²

SS6 POS, Vertical, Remote driver ³

SS7 POS, Hub, Remote driver ^{1 3}

SS9 POS, Hub, Driver Integral to Canopy

^{1 3 4}

¹ The minimum suspension height relative to diameter is as follows: 3ft = 18", 4ft = 24".

² Available with Pendant - Non Illuminated only.

³ Available with Pendant - Illuminated only.

⁴ Available with V1 (120V) only.



RING DISC™

K. FIXTURE FINISH

- FA01** White
- FA02** Black Metallic - Textured
- FA20** Silver Metallic - Textured
- FA25** Gold Metallic - Textured
- FA44** Midnight Blue Metallic - Textured
- FA45** Copper Metallic
- FA46** Charcoal Metallic - Textured
- FA47** Bronze Metallic - Textured
- FA52** Champagne Metallic
- FA53** Red Metallic - Textured

L. CANOPY FINISH

- CF00** Not required
- CF01** White
- CF02** Black Metallic - Textured
- CF20** Silver Metallic - Textured
- CF25** Gold Metallic - Textured
- CF44** Midnight Blue Metallic - Textured
- CF45** Copper Metallic
- CF46** Charcoal Metallic - Textured
- CF47** Bronze Metallic - Textured
- CF52** Champagne Metallic
- CF53** Red Metallic - Textured

M. ACOUSTIC PANEL COLOR

- AP00** Not required
- AP04** White ¹
- AP13** Apple Green ¹
- AP22** Blue ¹
- AP11** Light Gray ¹
- AP26** Sesame Gray ¹
- AP27** Black ¹

¹ Only available with Pendant - Illuminated.
* Other finishes are available, consult factory.

N. EMERGENCY

- E0** Not required
- E2** Emergency system - Remote ¹

¹ Not available in Integral or with 347V. Consult factory.

TECHNICAL DATA

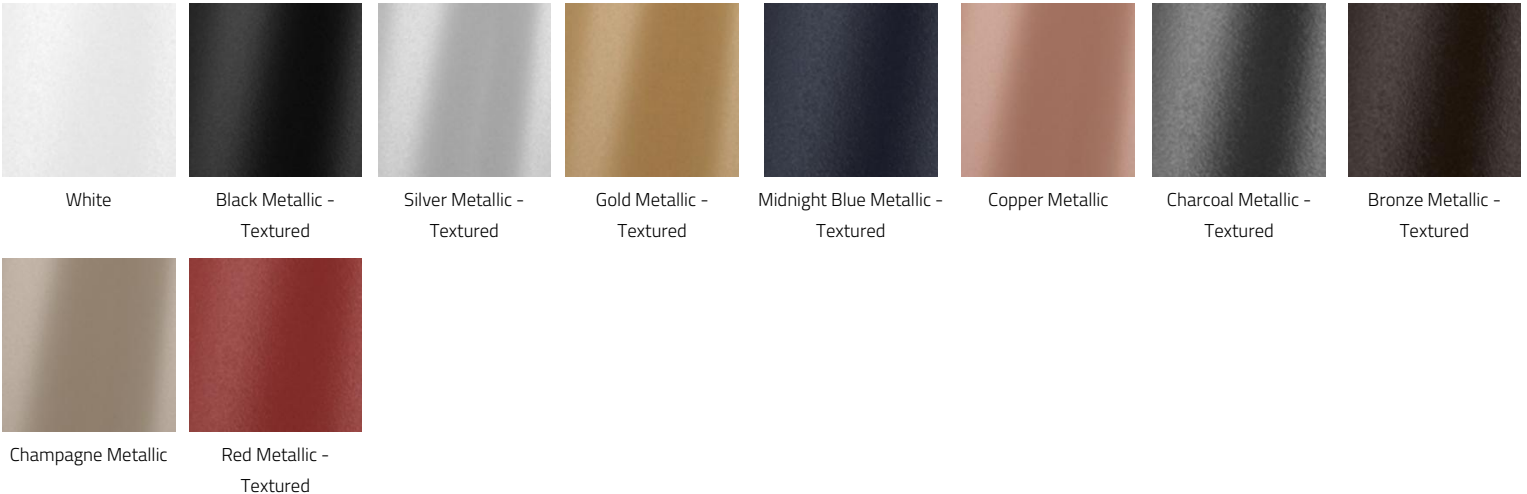
ILLUMINATED OR NON-ILLUMINATED

Code	LTD1	LTD2
Diameter		
Wattage Direct		
Direct lms		
LPW Direct		
Down/Up Ratio (Direct)		
Watts Direct/Indirect		
Direct/Indirect lms		
LPW Direct/Indirect		
Down/Up Ration (D/I)		

DIAMETER

Code	SL03	SL04
Diameter	3ft	4ft
Wattage Direct	86	115
Direct lms	6900	9200
LPW Direct	80	80
Down/Up Ratio (Direct)	100/0	100/0
Watts Direct/Indirect	86	115
Direct/Indirect lms	9000	12050
LPW Direct/Indirect	105	105
Down/Up Ration (D/I)	48/52	48/52

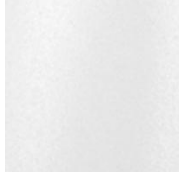
FIXTURE FINISH



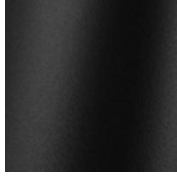
CANOPY FINISH



Not required



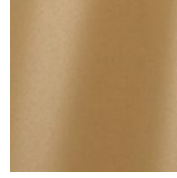
White



Black Metallic -
Textured



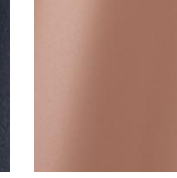
Silver Metallic -
Textured



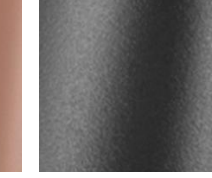
Gold Metallic -
Textured



Midnight Blue Metallic -
Textured



Copper Metallic



Charcoal Metallic -
Textured



Bronze Metallic -
Textured



Champagne Metallic



Red Metallic -
Textured

ACOUSTIC PANEL FINISH



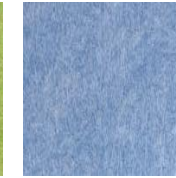
Not required



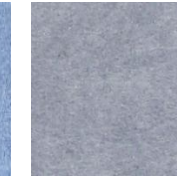
White ¹



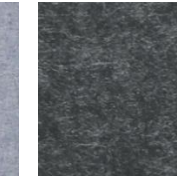
Apple Green ¹



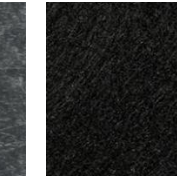
Blue ¹



Light Gray ¹



Sesame Gray ¹



Black ¹

¹ Only available with Pendant - Illuminated.

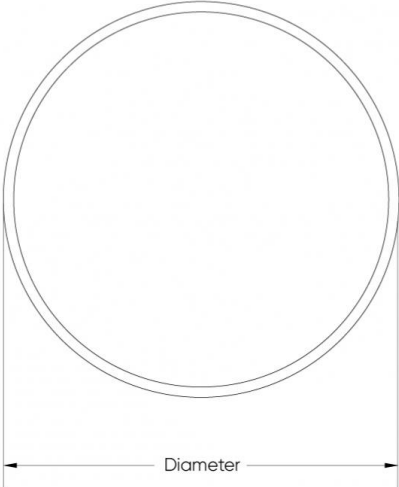
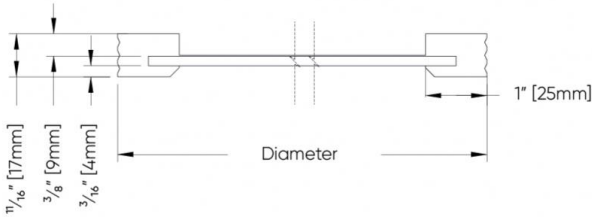
* Other finishes are available, consult factory.

APPROVALS



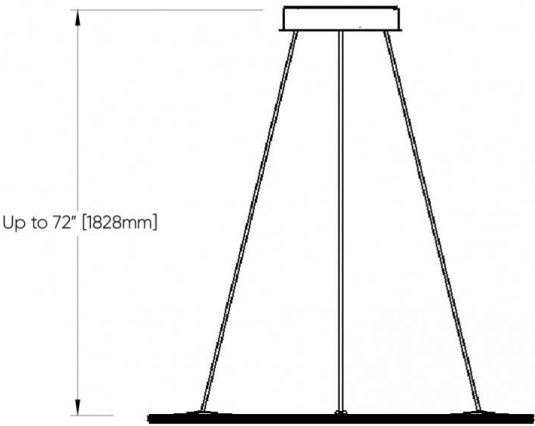
DIMENSIONAL DIAGRAMS

CROSS SECTION

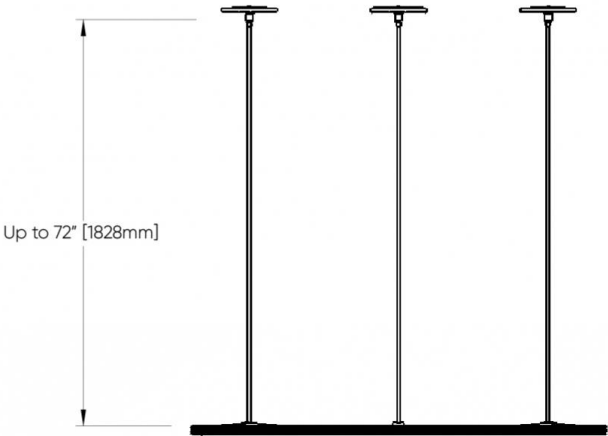


Diameter	Minimum Suspension Height
3' [914mm]	15" [381mm]
4' [1219mm]	20" [508mm]

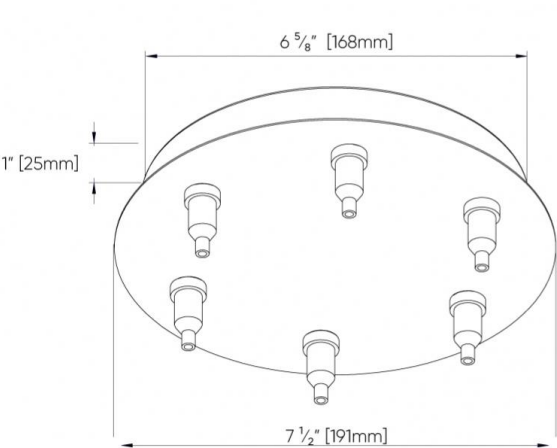
**Distance to ceiling
Hub Mount**



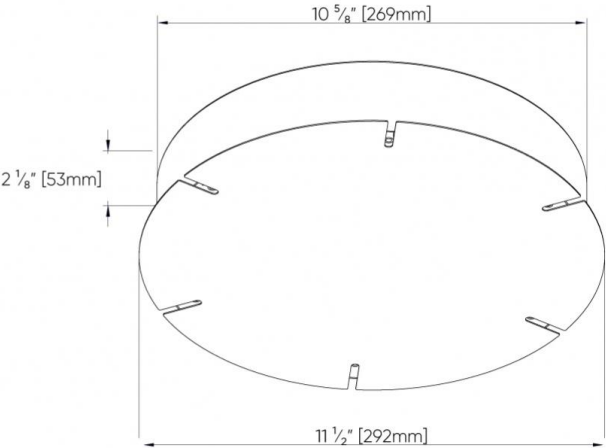
**Distance to ceiling
Vertical Mount**



Hub Remote POS (SS7)



Hub Integral POS (SS9)



Vertical Remote POS (SS6)

