

# SENTINEL™ - WALL

Project Name:

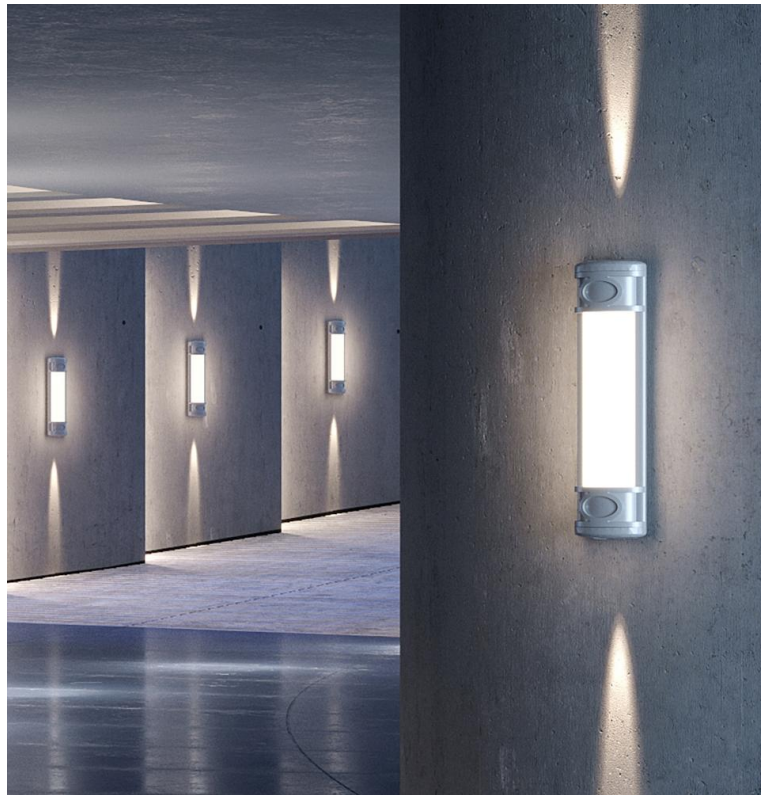
Fixture Type:

Fixture Code:

Quantities:



# SENTINEL™ - WALL



# SENTINEL™ - WALL

**SENTINEL** stands ready and secures the way, delivering a powerful omnidirectional light reinforced with optional uplight and downlight in either narrow or wide beam angles. Available in 3 fascia's, Sentinel, Sentinel II or Sentinel III.

## GENERAL SPECIFICATION

### Housing

Die-cast and extruded (low copper) aluminium. Front housing hinges open for access and secures via a bolt hidden behind a spring loaded flap.

### Gaskets

One piece silicone.

### Drivers

HPF electronic, 120-277V, 347V (EU-240V), Dimming for Direct Light Only. Up/Down light non-dimming.

### Diffuser

UV stabilised polycarbonate.

### Remote Emergency

Emergency option provides a 1.5 hour (3 hours for EU) emergency lighting facility. The remote system includes the inverter module, NiCad batteries and a remote wall/ceiling LED charge indicator and test switch (NA only) Maximum distance between wall/ceiling plate and luminaire is 15' (4.5m). Test switch fits a single gang box (not supplied).

### Approvals

IP65, Wet Location.

### Finish

Exterior grade, metallic powder coated paint.

### Reflector

Aluminium, white powder coated.

### Mechanical

Mounts directly over a standard electrical junction box (by others - North America only).

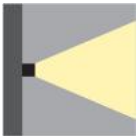
### Minimum Starting Temperature

-20°C.

### Delivered Lumens

Delivered lumens & LPW based on 3000K (min 80 CRI).

## MOUNTING & OPTICS



Ext-Wall

# SENTINEL™ - WALL

## HOW TO ORDER

### A. LUMINAIRE

**ENTE1E01** Sentinel

**ENTE1E02** Sentinel II

**ENTE1E03** Sentinel III

### B. FIXTURE LENGTH

**FL27** 27", 1200 lms

**FL51** 51", 2400 lms

### C. CRI

**CR80** CRI 80+

### D. VOLTAGE

**V1** 120/277V

**V2** 240V<sup>1</sup>

<sup>1</sup> Not available in North America.

### E. DIMMING

**DA10** 0-10V Dimming 10%

### F. CCT - FIXTURE FRONT

**CTA30** 3000K

**CTA35** 3500K

**CTA40** 4000K

### G. CCT - DOWNLIGHT MODULE

**CTB00** Not required

**CTB30** 3000K

**CTB35** 3500K

**CTB40** 4000K

### H. CCT - UPLIGHT MODULE

**CTC00** Not required

**CTC30** 3000K

**CTC35** 3500K

**CTC40** 4000K

### I. BEAM ANGLE - DOWNLIGHT MODULE

**BA00** Not require

**BA06** 6°

**BA21** 21°

### J. BEAM ANGLE - UPLIGHT MODULE

**BB00** Not required

**BB06** 6°

**BB21** 21°

### K. FINISH

**FA02** Black Metallic - Textured

**FA20** Silver Metallic - Textured

**FA47** Bronze Metallic - Textured

### L. VERTICAL BAR

**VB0** Not required

**VB1** Vertical bar, 27"<sup>1</sup>

**VB2** Vertical bar, 51"<sup>1</sup>

<sup>1</sup> Available for Sentinel and Sentinel II fascias only.

### M. EMERGENCY

**E0** Not required

**E2** Emergency system - Remote<sup>1</sup>

<sup>1</sup> Front LED only, max distance 10ft, 120/277V).



# SENTINEL™ - WALL

## TECHNICAL DATA

### FIXTURE LENGTH

<b>Code</b>	<b>FL27</b>	<b>FL51</b>
<b>Delivered lms</b>	1200	2400
<b>Wattage</b>	14	28
<b>LPW</b>	86	87

### DOWNLIGHT MODULE BEAM

<b>Code</b>	<b>BA00</b>	<b>BA06</b>	<b>BA21</b>
<b>Delivered Lms Down</b>		150	210
<b>Wattage</b>		2	4
<b>LPW</b>		62	59

### UPLIGHT MODULE BEAM

<b>Code</b>	<b>BB00</b>	<b>BB06</b>	<b>BB21</b>
<b>Delivered lms Up</b>		150	210
<b>Wattage</b>		2	4
<b>LPW</b>		62	59

## LUMINAIRE



Sentinel

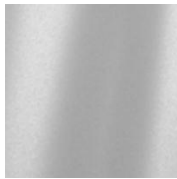


Sentinel II



Sentinel III

## FINISH



Black Metallic - Textured Silver Metallic - Textured Bronze Metallic - Textured

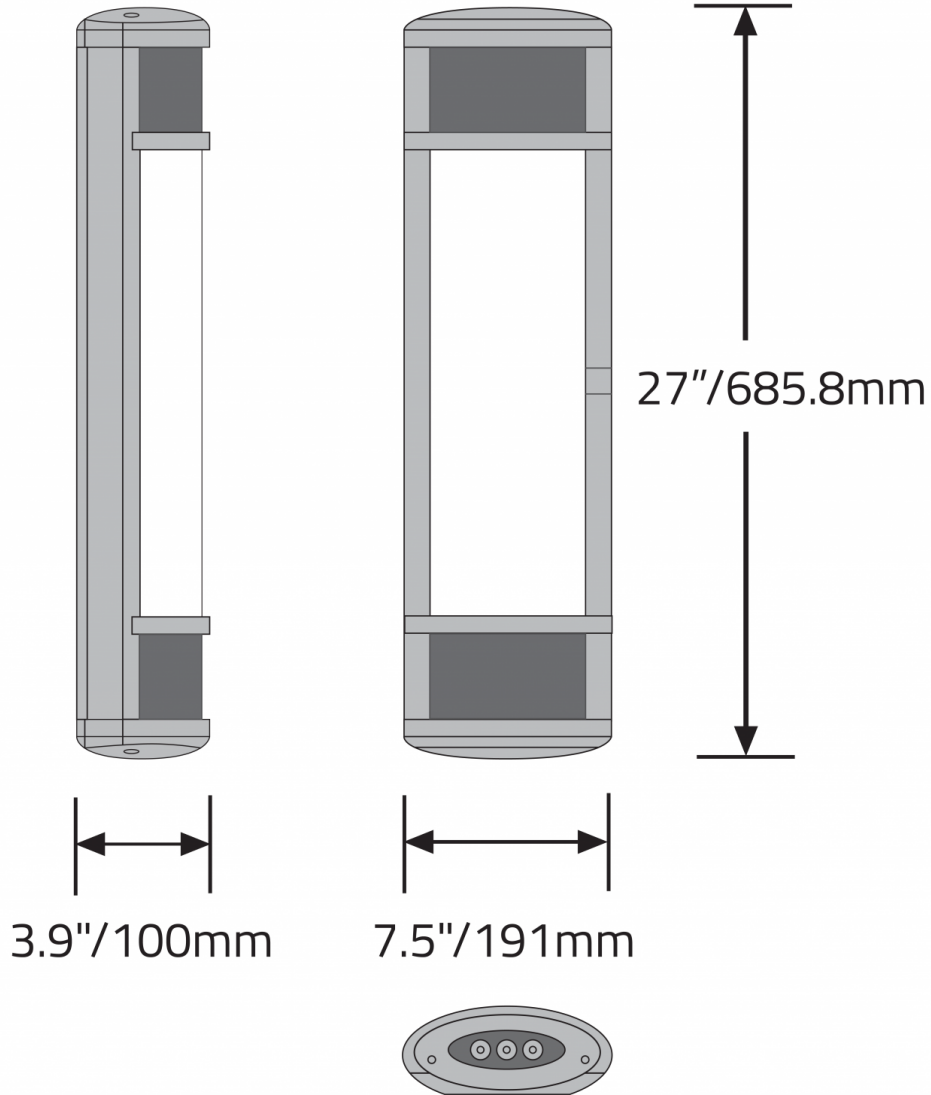
## APPROVALS



# SENTINEL™ - WALL

## DIMENSIONAL DIAGRAMS

### Sentinel 27"



### Sentinel 51"

