

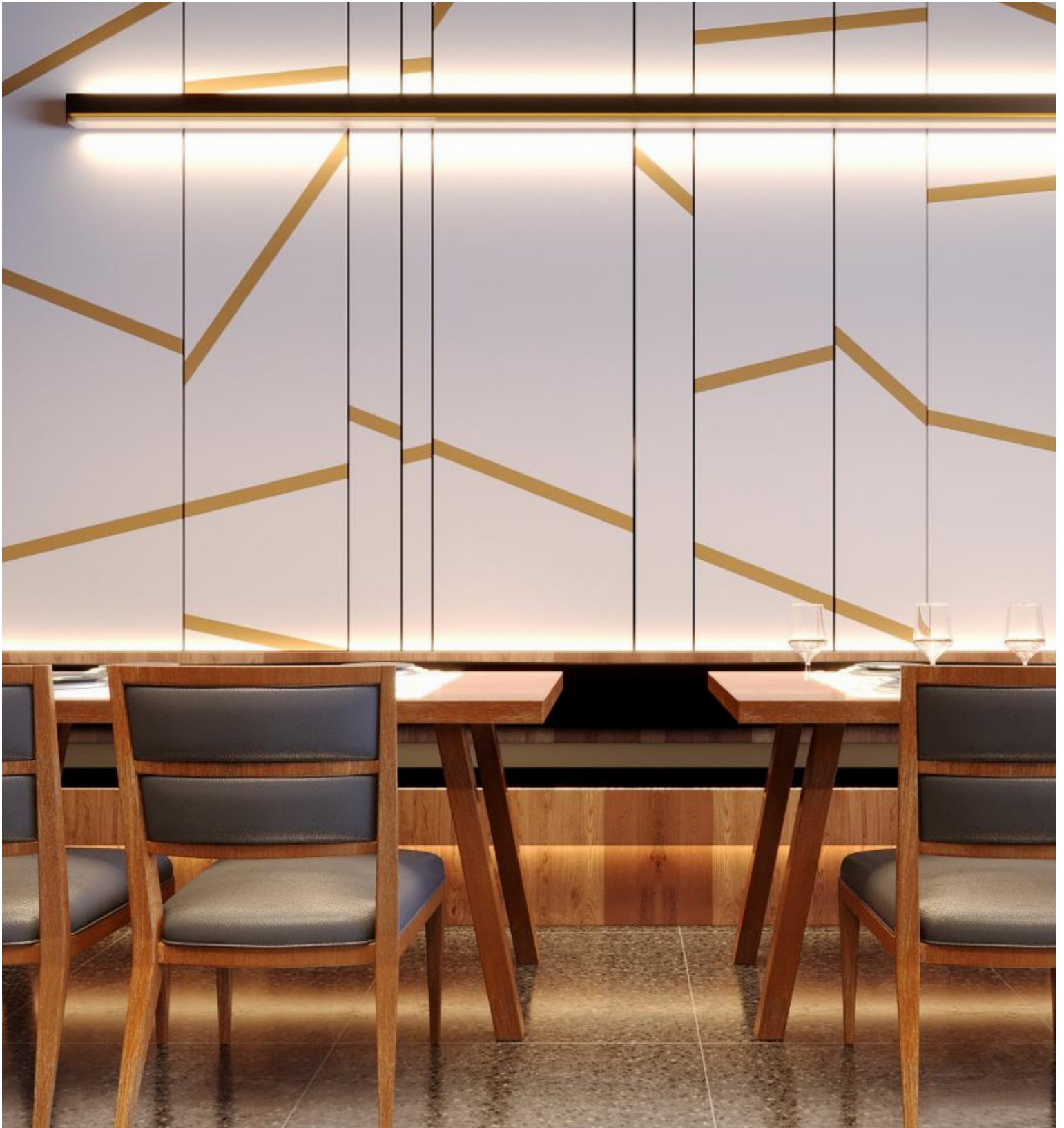
SPECTIVE™ - WALL

Project Name:

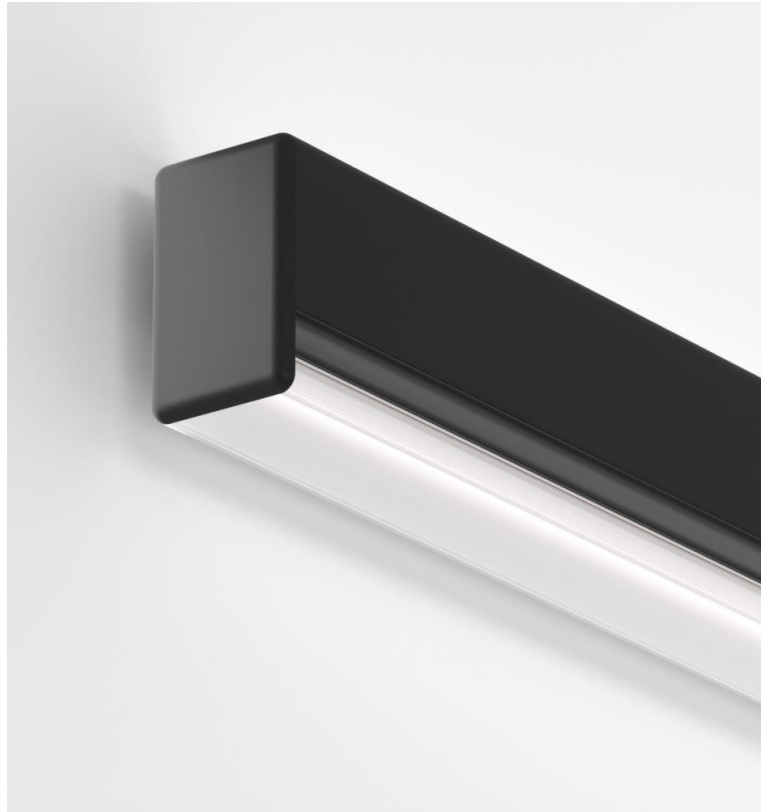
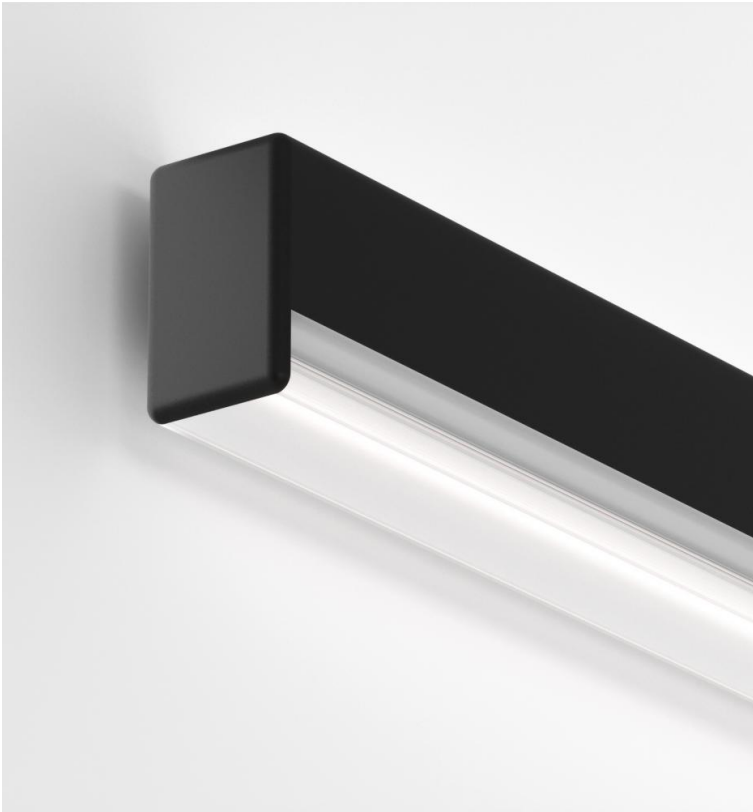
Fixture Type:

Fixture Code:

Quantities:



SPECTIVE™ - WALL



SPECTIVE™ - WALL

SPECTIVE, a seamless fusion of timeless design and cutting-edge technology. Meticulously designed to emulate the iconic shape of fluorescent tubes, **SPECTIVE** boasts a striking light strip that runs down the center of its diffuser. The diffuser of **SPECTIVE** takes the form of a rail and features an anodized trim in black, gold or silver that appears to draw a graphical line along its profile. The lens texture and shape produce a distinct visual impact, evocative of multiple wave patterns. Completing the visual ensemble are the flawlessly rounded end caps, which embody the **SPECTIVE** design ethos, yielding a versatile and appealing profile from every angle.

GENERAL SPECIFICATION

Body

Aluminum.

Diffuser

Opal acrylic.

Integral Emergency system

Emergency option provides a 1.5 hour (3 hours for EU) emergency lighting facility. The self contained system includes the inverter module, NiCad batteries, LED charge indicator and test switch (NA only). Not available with a 347V supply.

Drivers

HPF electronic drivers for 120-277V, 347V (EU-240V). The driver is integral to the fixture housing.

Reported L70 @25°C (77°F)

> 60,000 hrs @ 2000 lumens/ft (6000 lumens/m).

Tunable White

Tunable white available, consult factory.

Designed by

Serge Cornelissen.

Finish

Powder coated.

Mechanical

Luminaires mount directly over J box (by others).

Sensors

Compatible with Avi-On, Casambi, Enlighted, Lutron Vive, nLight, NX Lighting Controls, Osram, Philips, and others. Consult factory.

PoE

Can be integrated into your data network via Power over Ethernet (PoE) connectivity.

Estimated L70 @25°C (77°F)

> 165,000 hrs @ 2000 lumens/ft (6000 lumens/m).

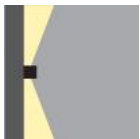
Approvals

Damp Rated.

Design

US Design Patent Pending.

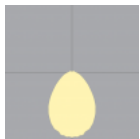
MOUNTING & OPTICS



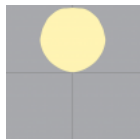
Wall - up/down



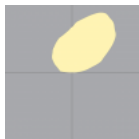
Wall - down



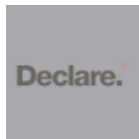
Direct DD3



Indirect UD2



Indirect UD3



Declare



PoE

SPECTIVE™ - WALL

HOW TO ORDER

A. LUMINAIRE

SPEW1W Direct

SPEW2W Direct/Indirect

¹ Will consist of two pieces connected. All data based on max values, consult Performance Data download for more details.

B. LENGTH OF RUN

SFA _ _ _ _

Length of run is 4, 6, 8, 10 or 12ft only, not available as a continuous run.

C. FIXTURE LENGTH

SL04 4ft

SL06 6ft

SL08 8ft

SL10 10ft

SL12 12ft

D. LUMENS/FT DIRECT

LPF020 200 lm/ft

LPF040 400 lm/ft

LPF060 600 lm/ft

E. LUMENS/FT INDIRECT

LPG000 Not required

LPG020 200 lm/ft

LPG040 400 lm/ft

LPG060 600 lm/ft

LPG080 800 lm/ft

LPG100 1000 lm/ft

LPG120 1200 lm/ft

F. CRI

CR90 CRI 90+

G. CCT

CTA30 3000K

CTA35 3500K

CTA40 4000K

H. DIRECT DIFFUSER

DD3 Diffused light diffuser

UPLIGHT DIFFUSER

UD0 Not required

UD2 Opal diffuser

UD3 Asymmetric diffuser ¹

¹ Available up to 1000 lm/ft.

I. VOLTAGE

V1 120/277V

V2 240V ¹

V3 347V ²

V4 Low Voltage ³

¹ Not available in North America.

² Only available with DA01 dimming.

³ Only available with DA45 dimming.

J. DIMMING

DA01 0-10V Dimming 1.0%

DA02 0-10V Dimming 0.1% ¹

DA20 DALI Dimming 0.1% ¹

DA21 DALI Dimming 1.0% ¹

DA30 DSI/switchDim ²

DA45 PoE ³

¹ Not available with 347V.

² Not available in North America.

³ Only available with V4.



SPECTIVE™ - WALL

K. FIXTURE FINISH

FA01 White

FA02 Black Metallic Textured

FA20 Silver Metallic Textured

L. INSIDE TRIM FINISH

FB02 Black Metallic Textured

FB20 Silver Metallic Textured

FB59 Gold Anodized

M. EMERGENCY

E0 Not required

E1 Emergency system - Integral ¹

¹ Available upon request, consult factory. Not available with V3.

N. CIRCUITS

CS1 Single circuit

CS2 Dual circuit

O. SENSORS

SPECTIVE™ - WALL

TECHNICAL DATA

LUMINAIRE

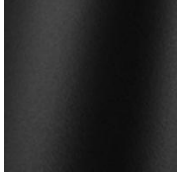
¹ Will consist of two pieces connected. All data based on max values, consult Performance Data download for more details.

Code	SPEW1W	SPEW2W
Light Direction		

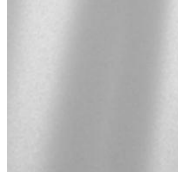
FIXTURE FINISH



White



Black Metallic Textured

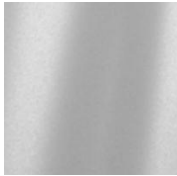


Silver Metallic Textured

INSIDE TRIM FINISH



Black Metallic Textured



Silver Metallic Textured



Gold Anodized

APPROVALS



DAMP
LOCATION



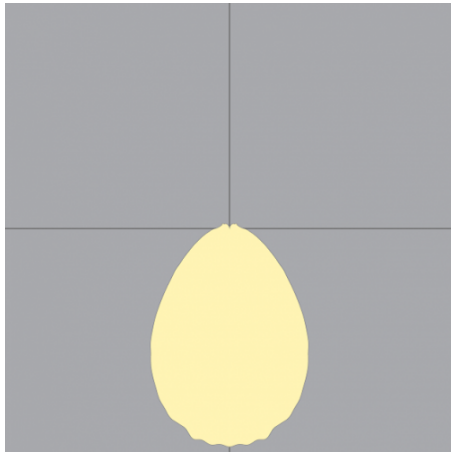
IP20



SPECTIVE™ - WALL

PERFORMANCE DATA

DIRECT DIFFUSED (DD3)



LUMEN/FT

600
400
200

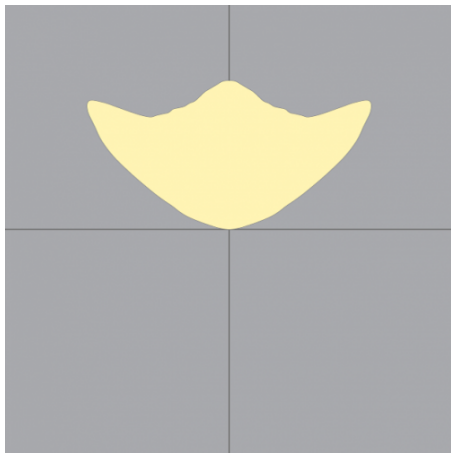
WATT/FT

6
4
2

LPW

104
109
116

INDIRECT BATWING (UD1)



LUMEN/FT

1400
1200
1000
800
600
400
200

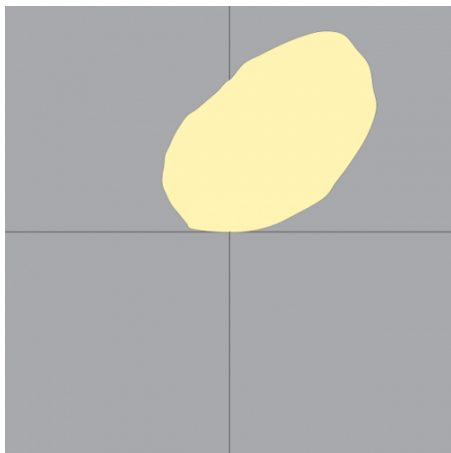
WATT/FT

12
10
8
6
5
3
2

LPW

116
119
122
127
131
137
144

INDIRECT ASYMMETRIC (UD3)



LUMEN/FT

1200
1000
800
600
400
200

WATT/FT

12
10
8
6
4
2

LPW

98
101
103
107
113
114

SPECTIVE™ - WALL

DIMENSIONAL DIAGRAMS

Isometric Views

