

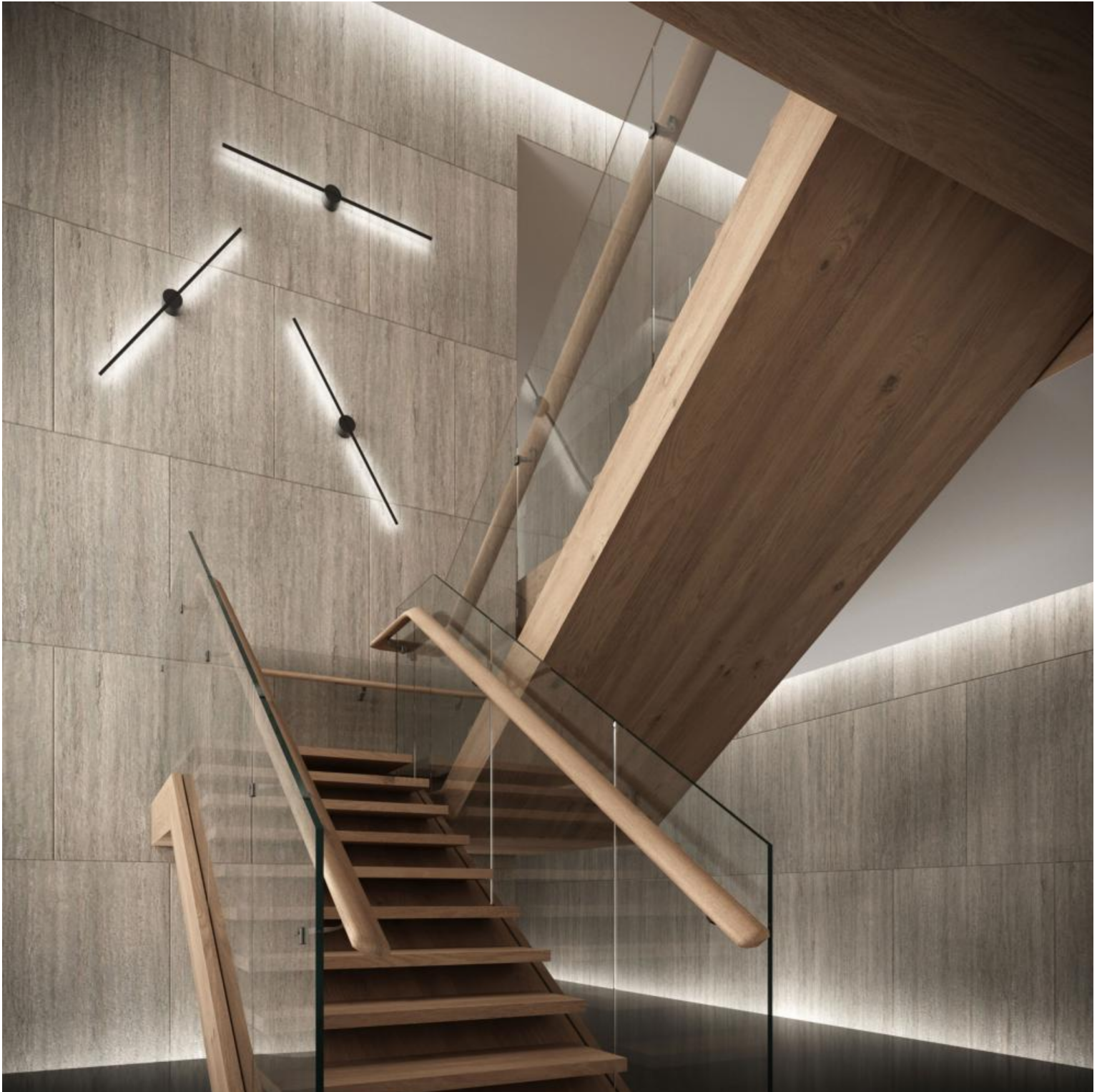
STRIPE™ - WALL SURFACE

Project Name:

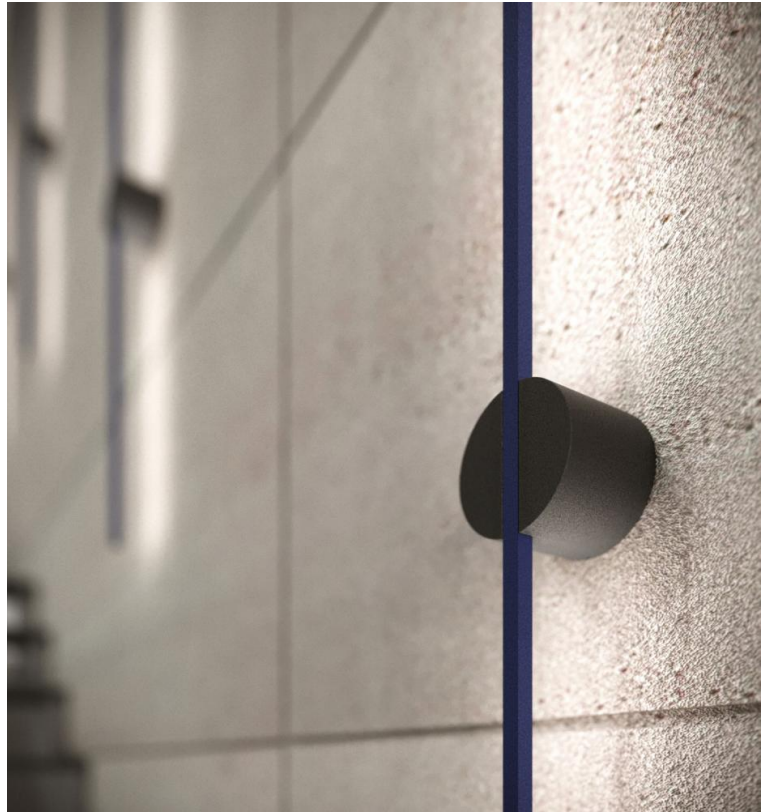
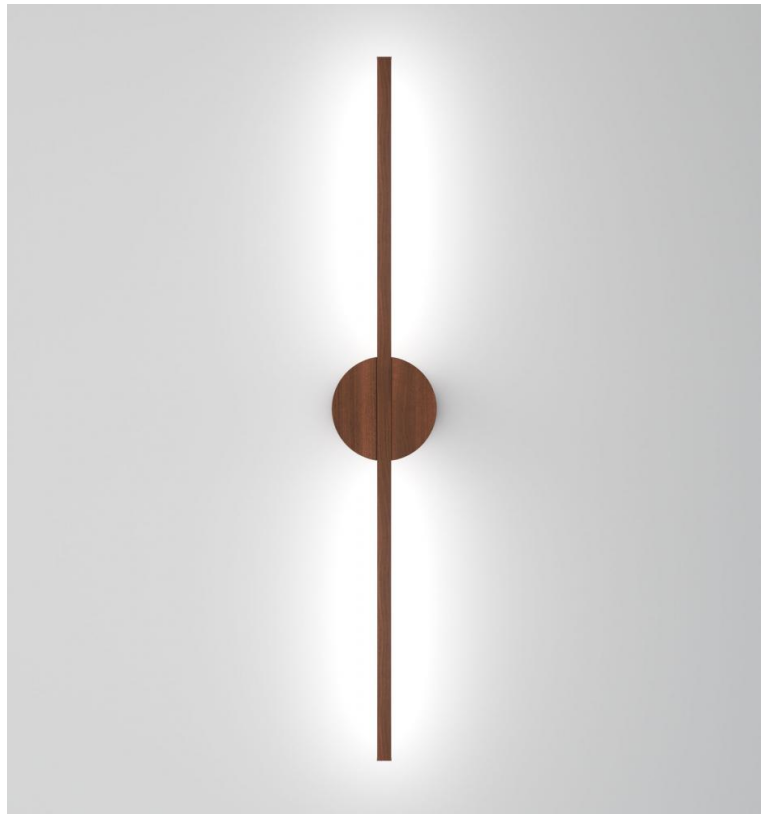
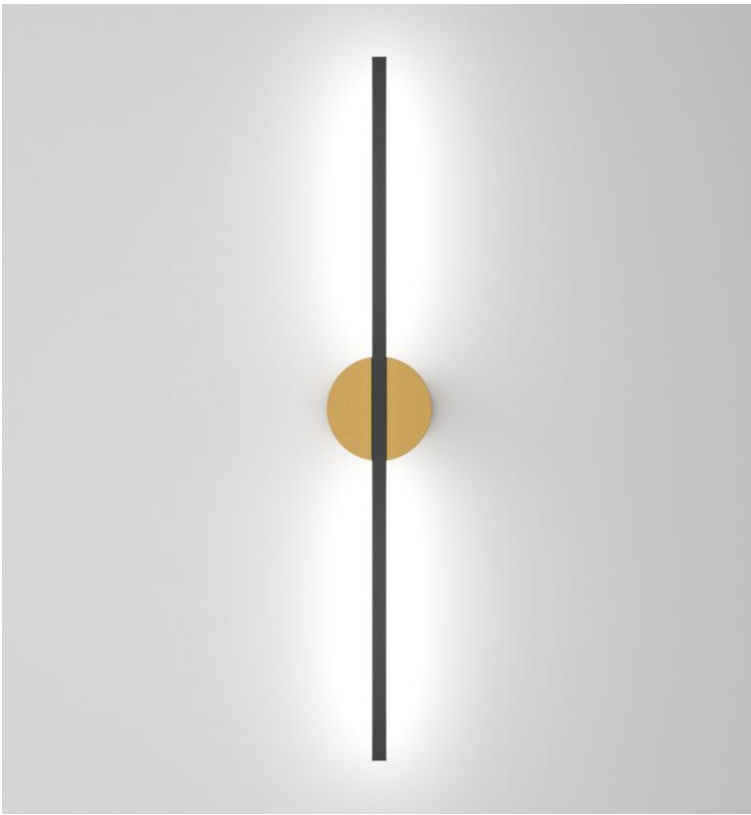
Fixture Type:

Fixture Code:

Quantities:



STRIPE™ - WALL SURFACE



STRIPE™ - WALL SURFACE

Stripe was designed as a minimalist, graphically abstract accessory for surface mounting. By combining two of the most basic geometries, a cylinder and a line, we achieved a powerful and expressive design despite its modest dimensions. The linear light source housing was kept extremely narrow and as it faces the wall or ceiling, it eliminates the need for large-surface diffusers required to achieve comfortable glare-free light. The central hub, which creates the necessary backlight offset distance, also acts as the driver compartment and because of its cylindrical form, it also allows the lamp to be oriented in any direction – vertically, horizontally or diagonally, again adding significant value to the visual appeal of the luminaire. The two part construction allows for a multitude of two-tone finish options.

GENERAL SPECIFICATION

Body

Extruded and die-cast aluminum.

Sensors

Consult factory regarding sensor compatibility.

Drivers

Integral, HPF electronic, 120-277V (EU-240V). The driver is integral to the fixture housing.

Delivered Lumens

Delivered lumen & LPW based on 4000K(min 80 CRI).

Approvals

ETL C/US. CE, Damp Rated.

Finish

Powder coated.

Diffuser

Frosted acrylic.

Mechanical

Luminaires mount directly to a J box (by others - North America only).

Reported L70 @25°C (77°F)

>60,000 hrs.

Design

US Pat. No. D886,356.

MOUNTING & OPTICS



Wall - Stripe



Ceiling - Stripe



Declare

STRIPE™ - WALL SURFACE

HOW TO ORDER

A. LUMINAIRE

TRPE1W29 29", 900 lms

TRPE1W53 53", 1800 lms

Delivered lumens are shown at max output based on white finish.
For continuous runs, consult factory.

B. LUMENS (INDIRECT)

LMA0075 750 lm

LMA0090 900 lm

LMA0120 1200 lm

LMA0180 1800 lm

TRPE1W29 available at 750 and 900 lms.
TRPE1W53 available at 1200 and 1800 lms.

C. CRI

CR80 CRI 80+

D. CCT

CTA30 3000K

CTA35 3500K

CTA40 4000K

E. VOLTAGE

V1 120/277V

V2 240V ¹

¹ Not available in North America

F. DIMMING

DA01 0-10V Dimming 1.0%

G. BASE FINISH

FA01 White

FA02 Black Metallic - Textured

FA20 Silver Metallic - Textured

FA25 Gold Metallic - Textured

FA27 Wood grain - Light Cherry ¹

FA28 Wood grain - Dark Walnut ¹

FA44 Midnight Blue Metallic - Textured

FA45 Copper Metallic

FA46 Charcoal Metallic - Textured

FA47 Bronze Metallic - Textured

FA52 Champagne Metallic

FA53 Red Metallic - Textured

¹ Longer than normal lead times may apply, consult factory.

H. ARM FINISH

FB01 White

FB02 Black Metallic - Textured

FB20 Silver Metallic - Textured

FB25 Gold Metallic - Textured

FB27 Wood grain - Light Cherry ¹

FB28 Wood grain - Dark Walnut ¹

FB44 Midnight Blue Metallic - Textured

FB45 Copper Metallic

FB46 Charcoal Metallic - Textured

FB47 Bronze Metallic - Textured

FB52 Champagne Metallic

FB53 Red Metallic - Textured

¹ Longer than normal lead times may apply, consult factory.



STRIPE™ - WALL SURFACE

TECHNICAL DATA

LUMINAIRE

Delivered lumens are shown at max output based on white finish.
For continuous runs, consult factory.

Code	TRPE1W29	TRPE1W53
Length	29"	53"
Wattage	7W	14W
Delivered lms	900	1800
LPW Indirect	128	128

FINISH



White



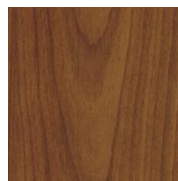
Black Metallic -
Textured



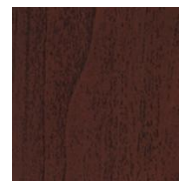
Silver Metallic -
Textured



Gold Metallic -
Textured



Wood grain - Light
Cherry ¹



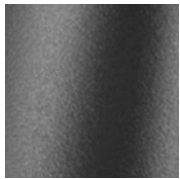
Wood grain - Dark
Walnut ¹



Midnight Blue Metallic -
Textured



Copper Metallic



Charcoal Metallic -
Textured



Bronze Metallic -
Textured



Champagne Metallic



Red Metallic -
Textured

¹ Longer than normal lead times may apply, consult factory.

ARM FINISH



White



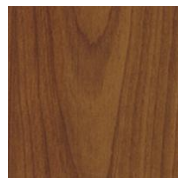
Black Metallic -
Textured



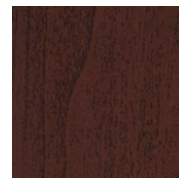
Silver Metallic -
Textured



Gold Metallic -
Textured



Wood grain - Light
Cherry ¹



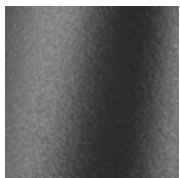
Wood grain - Dark
Walnut ¹



Midnight Blue Metallic -
Textured



Copper Metallic



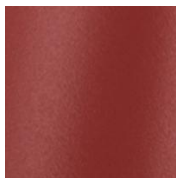
Charcoal Metallic -
Textured



Bronze Metallic -
Textured



Champagne Metallic



Red Metallic -
Textured

¹ Longer than normal lead times may apply, consult factory.



STRIPE™ - WALL SURFACE

APPROVALS



STRIPE™ - WALL SURFACE

DIMENSIONAL DIAGRAMS

