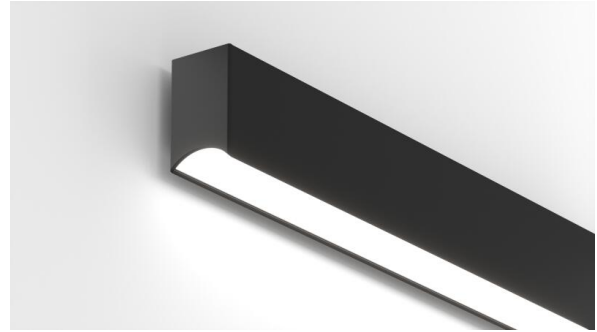




TUNNEL™

SHORT SPECIFICATION SHEET



Fixture Type

Fixture Code

Quantities

1 HOW TO ORDER

1. LUMINAIRE

TLCW1W Direct

TLCW2W Direct/Indirect

One power cord every 50 linear ft.

2. LENGTH OF RUN

Minimum length to order is 4ft and orders to be in 2ft increments. For 6 inch increments, consult factory.

Example: 4ft = SFA0400

Example: 10ft = SFA1000

Example: 50ft = SFA5000

For runs over 50ft in length, consult factory.

SFA_ _ _ _

Minimum length to order is 4ft and orders to be in 2ft increments. For 6 inch increments, consult factory.

Example: 4ft = SFA0400

Example: 10ft = SFA1000

Example: 50ft = SFA5000

For runs over 50ft in length, consult factory.

3. MAX LENGTH PER SECTION

SL04 4ft	SL06 6ft	SL08 8ft	SL10 10ft
SL12 12ft			

You can select the preferred maximum length per segment, to account for transportation and building constraints. Example: If a 40ft run is required and SL12 (12ft) is selected, we would provide 4 10ft segments. For special requirements, please contact sales@betacalco.com.

4. LM/FT (DIRECT)

LPF020 200 lm/ft	LPF040 400 lm/ft	LPF060 600 lm/ft	LPF080 800 lm/ft
LPF100 1000 lm/ft	LPF120 1200 lm/ft	LPF140 1400 lm/ft	

5. LM/FT (INDIRECT)

LPG000 Not required	LPG020 200 lm/ft	LPG040 400 lm/ft	LPG060 600 lm/ft
LPG080 800 lm/ft	LPG100 1000 lm/ft	LPG120 1200 lm/ft	LPG140 1400 lm/ft
LPG165 1650 lm/ft			

6. CRI

CR80 CRI 80+	CR90 CRI 90+
---------------------	---------------------

7. CCT DIRECT

CTA27 2700K	CTA30 3000K	CTA35 3500K	CTA40 4000K
--------------------	--------------------	--------------------	--------------------

8. CCT INDIRECT

CTB00 Not required	CTB27 2700K	CTB30 3000K	CTB35 3500K
CTB40 4000K			

9. DIRECT DIFFUSER

DD1 Asymmetric diffuser	DD4 Comfort diffuser
--------------------------------	-----------------------------

10. UPLIGHT DIFFUSER

UD0 Not required	UD2 Opal diffuser	UD3 Asymmetric diffuser ¹
-------------------------	--------------------------	---

¹ Available up to 1200 lm/ft. The asymmetric distribution will be directed away from the wall.

11. UPLIGHT BLACKOUT PLATE

UB00 Not required **UB_ _** Blackout plate ¹

¹ Available on a per foot basis. May be required to prevent lighting up of duct work in loft style applications.

12. VOLTAGE

V1 120/277V **V2** 240V ¹ **V3** 347V ² **V4** Low Voltage ³

¹ Not available in North America.

² Only available with DA01 dimming.

³ Only available with DA45 dimming.

13. DIMMING

DA01 0–10V Dimming 1.0% **DA02** 0–10V Dimming 0.1% ¹ **DA20** DALI Dimming 0.1% ¹ **DA21** DALI Dimming 1.0% ¹
DA30 DSI/switchDim ² **DA45** PoE ³

¹ Not available with V3.

² Not available in North America.

³ Only available with V4.

14. FIXTURE FINISH

FA01 White – Textured **FA02** Black Metallic – Textured **FA20** Silver Metallic – Textured **FA25** Gold Metallic – Textured
FA27 Wood grain – Light Cherry ¹ **FA28** Wood grain – Dark Walnut ¹ **FA44** Midnight Blue Metallic – Textured **FA45** Copper Metallic
FA46 Charcoal Metallic – Textured **FA47** Bronze Metallic – Textured **FA52** Champagne Metallic **FA53** Red Metallic – Textured

¹ Longer than normal lead times may apply, consult factory.

15. EMERGENCY

E0 Not required

E1 Emergency system – Integral ¹ **E3** Emergency generated circuit ¹

¹ A drawing will be required at time of ordering to determine the required number and location of the emergency sections or generator circuits. Not available in 347V.

16. CIRCUITS

CS1 Single circuit

CS2 Dual circuit ¹

17. SENSORS

Compatible with Avi-On, Casambi, Enlighted, Lutron Vive, nLight, NX Lighting Controls, Osram, Philips, and others. Consult factory.