

WARP™ - CEILING

Project Name:	Fixture Type:
Fixture Code:	Quantities:



WARP™ - CEILING



WARP™ - CEILING

Our dual circuit luminaire delivers high efficiency diffused, spot and direct light, allowing you to transition from general ambient to mood lighting. Available in two sizes 18" (457mm) & 24" (610mm), the **WARP** family offers two styles of pendant plus a ceiling mounted version. The color temperature of each light source can be individually selected to deliver an effect best suited to the application. New to the WARP are a wide array of contemporary decorative colors to accent your architectural scene.

GENERAL SPECIFICATION

Body

Aluminum and steel.

Drivers

HPF electronic drivers for 120-277V, 347V, (EU-240V). The driver is integral to the fixture housing.

Integral emergency system

Emergency option provides a 1.5 hour (3 hours for EU) emergency lighting facility. The self contained system includes the inverter module, NiCad batteries, LED charge indicator and test switch (NA only). Integral emergency EU luminaires have a 10.5" (270mm) DIA x 2" (48mm) height canopy with LED charge indicator. Not available with a 347V supply.

Delivered lumens

Delivered lumens & LPW based on 4000K (min 80 CRI).

L70 @25°C

> 50,000 hrs.

Design

US Pat. No. D893,083.

Mechanical

Luminaires mount directly to a J box (by others - North America only).

Diffuser

Acrylic.

Remote emergency

Emergency option provides a 1.5 hour (3 hours for EU) emergency lighting facility. The remote system includes the inverter module, NiCad batteries and a remote wall/ceiling LED charge indicator and test switch (NA only) Maximum distance between wall/ceiling plate and luminaire is 15' (4.5m). Test switch fits a single gang box (not supplied).

Sensors

Consult factory regarding sensor compatibility.

Approvals

Damp Rated.

Designed by

Serge Cornelissen.

OPTICS & FEATURES



WARP™ - CEILING

HOW TO ORDER

A. LUMINAIRE

WARC1P18 18", 3300 lms **WARC1P24** 24", 4900 lms

B. LUMENS

LMA0200 2000 lm **LMA0330** 3300 lm **LMA0490** 4900 lm

¹ Available for WARC1P24 only.

C. CRI

CR80 CRI 80+

D. CCT

CTA27 2700K **CTA30** 3000K **CTA35** 3500K **CTA40** 4000K

E. VOLTAGE

V1 120/277V **V2** 240V ¹ **V3** 347V ²

¹ Not available in North America.

² Available with DA01 dimming only.

F. DIMMING

DA01 0-10V Dimming 1.0%
DA30 DSI/switchDim ^{1 2} **DA02** 0-10V Dimming 0.1% ¹ **DA20** DALI Dimming 0.1% ¹ **DA21** DALI Dimming 1.0% ¹

¹ Not available with V3.

² Not available in North America.

G. FINISH

FA01 White **FA02** Black Metallic - Textured **FA20** Silver Metallic - Textured **FA25** Gold Metallic - Textured
FA44 Midnight Blue Metallic - Textured **FA45** Copper Metallic **FA46** Charcoal Metallic - Textured **FA47** Bronze Metallic - Textured
FA52 Champagne Metallic **FA53** Red Metallic - Textured

H. EMERGENCY

E0 Not required **E1** Emergency system - Integral **E2** Emergency system - Remote

I. DOWNLIGHT SPOT

DL00 Not required **DL27** Downlight 28W, 2700K (1730 delivered lms) **DL30** Downlight 28W, 3000K (1799 delivered lms) **DL35** Downlight 28W, 3500K (1854 delivered lms)
DL40 Downlight 28W, 4000K (1858 delivered lms)

Beam angle for Downlight Spot is 40°.

CIRCUITS

CS1 Single Circuit **CS2** Dual Circuit

WARP™ - CEILING

TECHNICAL DATA

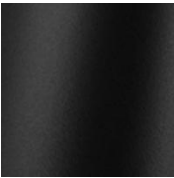
LUMINAIRE

Code	WARC1P18	WARC1P24
Diameter (A)	18"	24"
Wattage	22W	34W
Delivered lms	3300	4900
LPW	146	145
Height (B)	6"	6.5"

FINISH



White



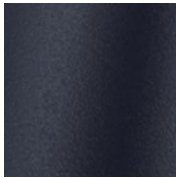
Black Metallic -
Textured



Silver Metallic -
Textured



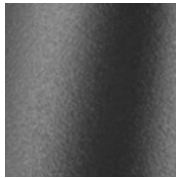
Gold Metallic -
Textured



Midnight Blue Metallic -
Textured



Copper Metallic



Charcoal Metallic -
Textured



Bronze Metallic -
Textured



Champagne Metallic



Red Metallic -
Textured

APPROVALS



WARP™ - CEILING

DIMENSIONAL DIAGRAMS

