

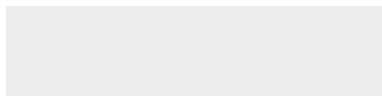


WARP HEMI™

FULL SPECIFICATION SHEET



FIXTURE TYPE



FIXTURE CODE



QUANTITIES

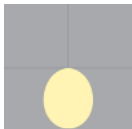
1 DESCRIPTION

Our dual circuit luminaire delivers high efficiency diffused, spot and direct light, allowing you to transition from general ambient to mood lighting. The direct spot light also comes with multiple packages that can give you a different lumen output and color temperature. Available in two sizes 18" & 24", the **WARP** family offers two styles of pendant plus a ceiling mounted version. The color temperature of each light source can be individually selected to deliver an effect best suited to the application. New to the **WARP** are a wide array of contemporary decorative colors to accent your architectural scene.

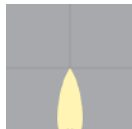
2 OPTICS & FEATURES



Suspended
Direct



Direct



Spot Only 40°



Declare

3 APPROVALS



4 GENERAL SPECIFICATION

BODY

Aluminum and steel.

CANOPY FINISH

Powder coated.

LENS

Acrylic.

REMOTE EMERGENCY

Emergency option provides a 1.5 hour (3 hours for EU) emergency lighting facility. The remote system includes the inverter module, NiCad batteries and a remote wall/ceiling LED charge indicator and test switch (NA only) Maximum distance between wall/ceiling plate and luminaire is 15' (4.5m). Test switch fits a single gang box (not supplied).

REMOTE MOUNTING OF DRIVERS

Wire Size (max distance from canopy to drivers) 18 AWG – 9.5' (2.9m), 16 AWG – 19.5' (5.9m), 14 AWG – 29.5' (9.0m). Drivers must be accessible after installation.

MECHANICAL

Luminaires mount directly to a J box (by others – North America only).

REPORTED L70 @25°C(77°F)

> 50,000 hrs.

DESIGN

US Pat. No. D897,589

SENSORS

Consult factory regarding sensor compatibility.

DRIVERS

HPF electronic drivers for 120–277V, 347V, (EU–240V). The driver is integral to the fixture housing.

SUSPENSION

Power over Suspension. Standard power options available, consult factory.

DELIVERED LUMENS

Delivered lumens & LPW based on 4000K (min 80 CRI).

APPROVALS

Damp Rated.

DESIGNED BY

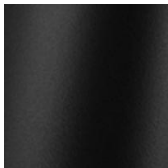
Serge Cornelissen

5 DESIGN OPTIONS

FIXTURE FINISH



White



Black
Metallic –
Textured



Silver
Metallic –
Textured



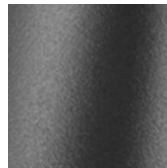
Gold Metallic
– Textured



Copper
Metallic



Midnight
Blue Metallic
– Textured



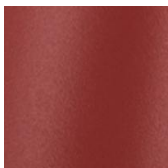
Charcoal
Metallic –
Textured



Bronze
Metallic –
Textured



Champagne
Metallic



Red Metallic
– Textured

CANOPY FINISH



6 HOW TO ORDER

1. LUMINAIRE

WHPP1P18 18", 3300 lms

WHPP1P24 24", 4900 lms

2. LUMENS

LMA0200 2000 lm

LMA0330 3300 lm

LMA0490 4900 lm ¹

¹ Available for WHPP1P24 only.

3. CRI

CR80 CRI 80+

4. CCT – DIRECT

CTA27 2700K

CTA30 3000K

CTA35 3500K

CTA40 4000K

5. CCT – DIRECT SPOT

CTC00 Not required

CTC27 2700K, 1700 lms

CTC30 3000K, 1800 lms

CTC35 3500K, 1900 lms

CTC40 4000K, 1900 lms

Beam angle for Downlight Spot is 40°.

6. VOLTAGE

V1 120/277V

V2 240V ¹

V3 347V ²

¹ Not available in North America. ² Available with DA01 dimming only.

7. DIMMING

DA01 0–10V Dimming 1.0%

DA02 0–10V Dimming 0.1% ¹

DA20 DALI Dimming 0.1% ¹

DA21 DALI Dimming 1.0% ¹

DA30 DSI/switchDim ^{1 2}

¹ Not available with 347V. ² Not available in North America.

8. FIXTURE FINISH

FA01 White

FA02 Black Metallic – Textured

FA20 Silver Metallic – Textured

FA25 Gold Metallic – Textured

FA45 Copper Metallic

FA44 Midnight Blue Metallic –
Textured

FA46 Charcoal Metallic –
Textured

FA47 Bronze Metallic – Textured

FA52 Champagne Metallic

FA53 Red Metallic – Textured

9. CANOPY

CN1 Canopy A ¹

CN2 Canopy B ²

¹ Drivers are integral within the canopy. ² Drivers are in a remote box.

10. CANOPY FINISH

CF01 White

CF02 Black Metallic – Textured

CF20 Silver Metallic – Textured

CF25 Gold Metallic – Textured

CF44 Midnight Blue Metallic –
Textured

CF45 Copper Metallic

CF46 Charcoal Metallic –
Textured

CF47 Bronze Metallic – Textured

CF52 Champagne Metallic

CF53 Red Metallic – Textured

11. EMERGENCY

E0 Not required

E2 Emergency system – Remote

CIRCUITS

CS1 Single circuit

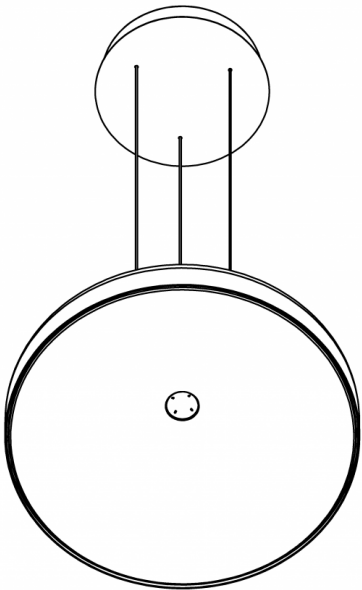
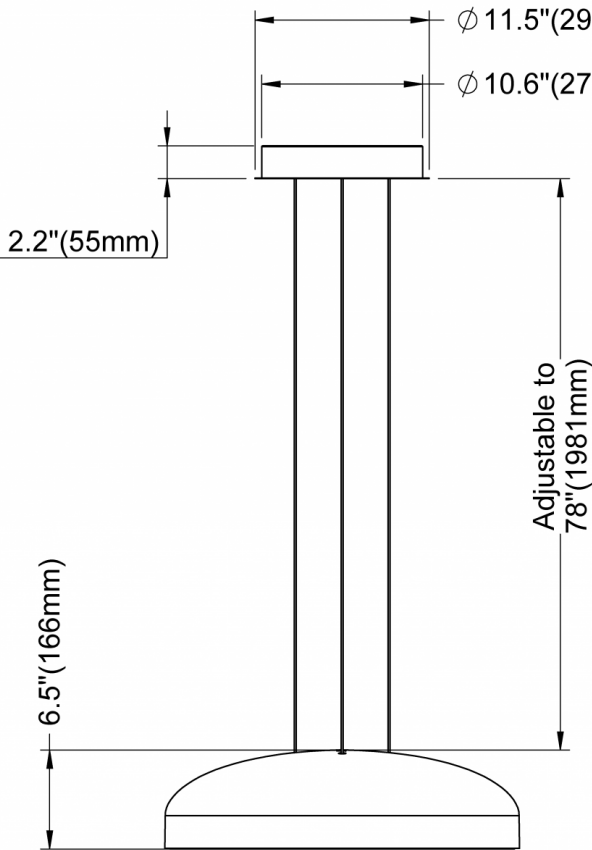
CS2 Dual circuit

7 TECHNICAL DATA

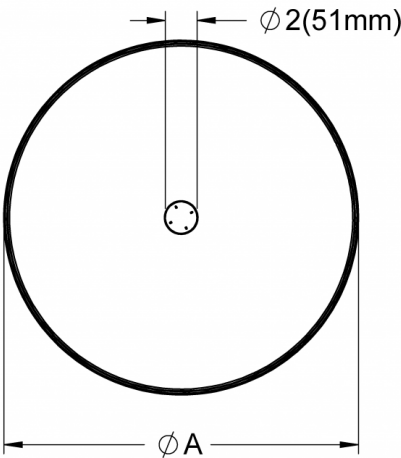
LUMINAIRE

Code	WHPP1P18	WHPP1P24
Diameter (A)	18"	24"
Light Direction	Direct	Direct
Wattage	22W	34W
Delivered lms	3300	4900
LPW	146	145
Height (B)	6"	6.5"

Warp Hemi Pendant 18" / 24"
CN1 - Canopy A (Integral)

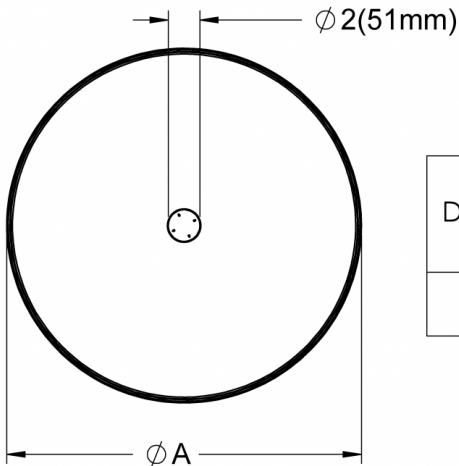
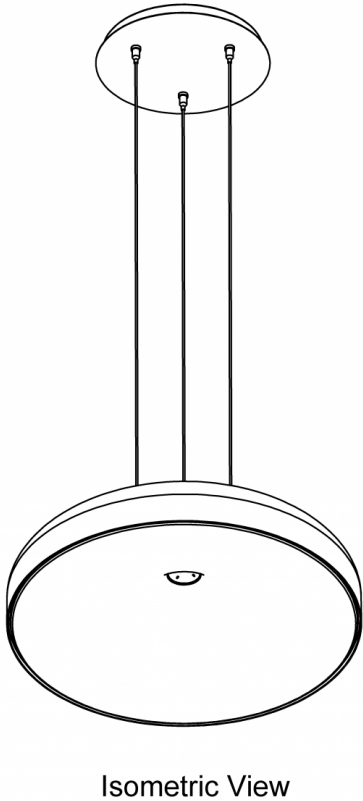
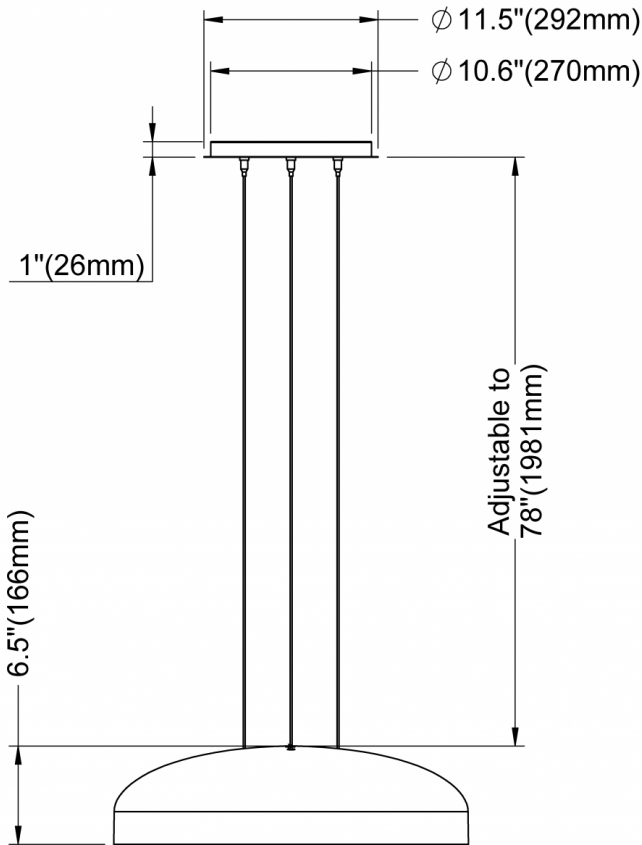


Isometric View



Diameter	Warp Hemi 18"	Warp Hemi 24"
A	17.7"(450mm)	23.4"(594mm)

Warp Hemi Pendant 18" / 24"
CN2 - Canopy B (Remote)



Diameter	Warp Hemi 18"	Warp Hemi 24"
A	17.7" (450mm)	23.4" (594mm)