

WARP HEMI™ - SUSPENDED



Project Name:

Fixture Type:

Fixture Code:

Quantities:

A. LUMINAIRE

WHPP1P18 18", 3300 lms

WHPP1P24 24", 4900 lms

B. LUMENS

LMA0200 2000 lm

LMA0330 3300 lm

LMA0490 4900 lm ¹

¹ Available for WHPP1P24 only.

C. CRI

CR80 CRI 80+

D. CCT - DIRECT

CTA30 3000K

CTA35 3500K

CTA40 4000K

E. CCT - DOWNLIGHT SPOT

CTC00 Not required

CTC27 2700K, 1700 lms

CTC30 3000K, 1800 lms

CTC35 3500K, 1900 lms

CTC40 4000K, 1900 lms

Beam angle for Downlight Spot is 40°.

F. VOLTAGE

V1 120/277V

V2 240V ¹

V3 347V ²

¹ Not available in North America.

² Available with DA01 dimming only.

G. DIMMING

DA01 0-10V Dimming 1.0%

DA02 0-10V Dimming 0.1% ¹

DA20 DALI Dimming 0.1% ¹

DA21 DALI Dimming 1.0% ¹

DA30 DSI/switchDim ^{1 2}

¹ Not available with 347V.

² Not available in North America.

H. FIXTURE FINISH

FA01 White

FA02 Black Metallic - Textured

FA20 Silver Metallic - Textured

FA25 Gold Metallic - Textured

FA45 Copper Metallic

FA44 Midnight Blue Metallic - Textured

FA46 Charcoal Metallic - Textured

FA47 Bronze Metallic - Textured

FA52 Champagne Metallic

FA53 Red Metallic - Textured

I. CANOPY

CN1 Canopy A ¹

CN2 Canopy B ²

¹ Drivers are integral within the canopy.

² Drivers are in a remote box.



WARP HEMI™ - SUSPENDED

J. CANOPY FINISH

CF01 White

CF44 Midnight Blue Metallic - Textured

CF52 Champagne Metallic

CF02 Black Metallic - Textured

CF45 Copper Metallic

CF53 Red Metallic - Textured

CF20 Silver Metallic - Textured

CF46 Charcoal Metallic - Textured

CF25 Gold Metallic - Textured

CF47 Bronze Metallic - Textured

K. EMERGENCY

E0 Not required

E2 Emergency system - Remote

CIRCUITS

CS1 Single circuit

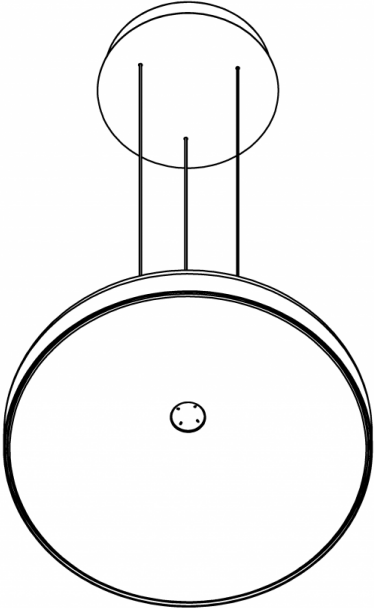
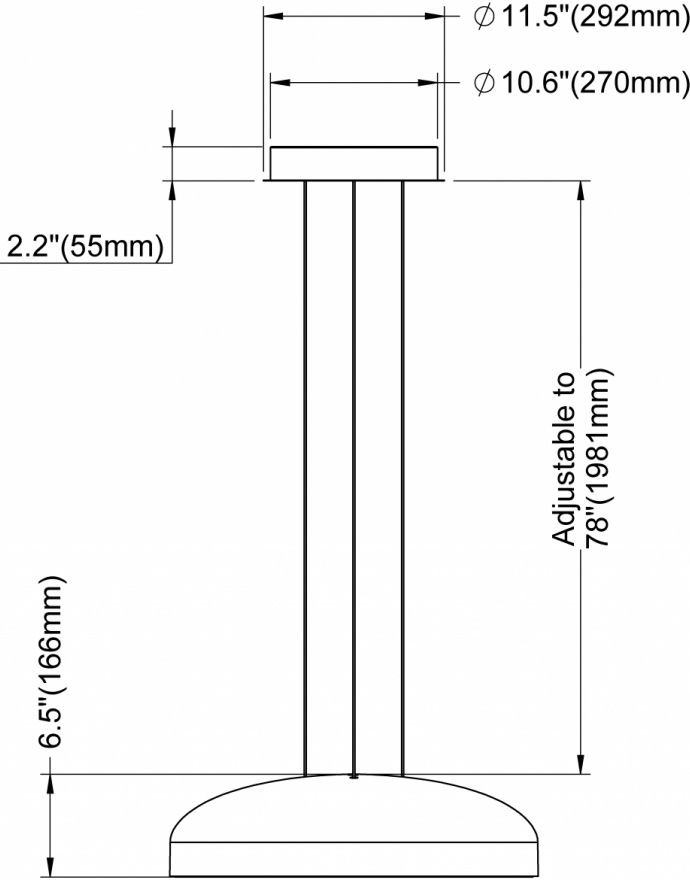
CS2 Dual circuit



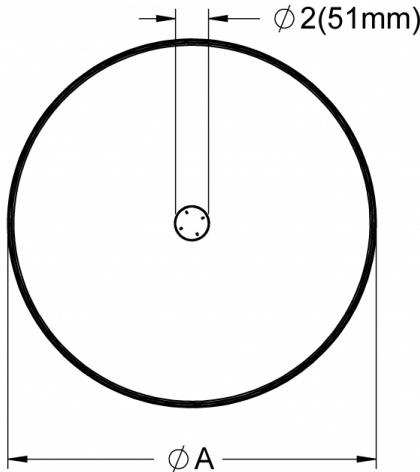
WARP HEMI™ - SUSPENDED

DIMENSIONAL DIAGRAMS

Warp Hemi Pendant 18" / 24"
 CN1 - Canopy A (Integral)

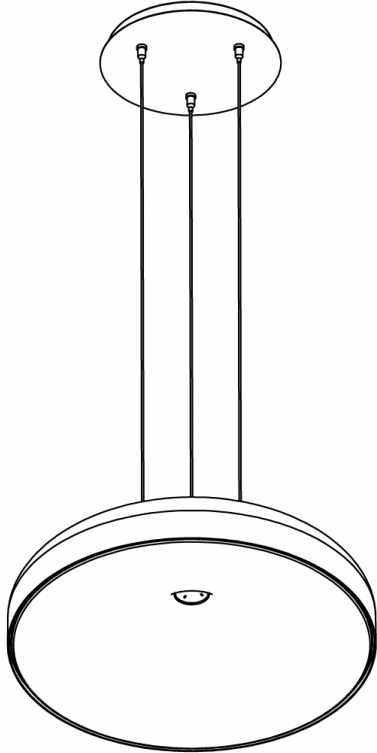
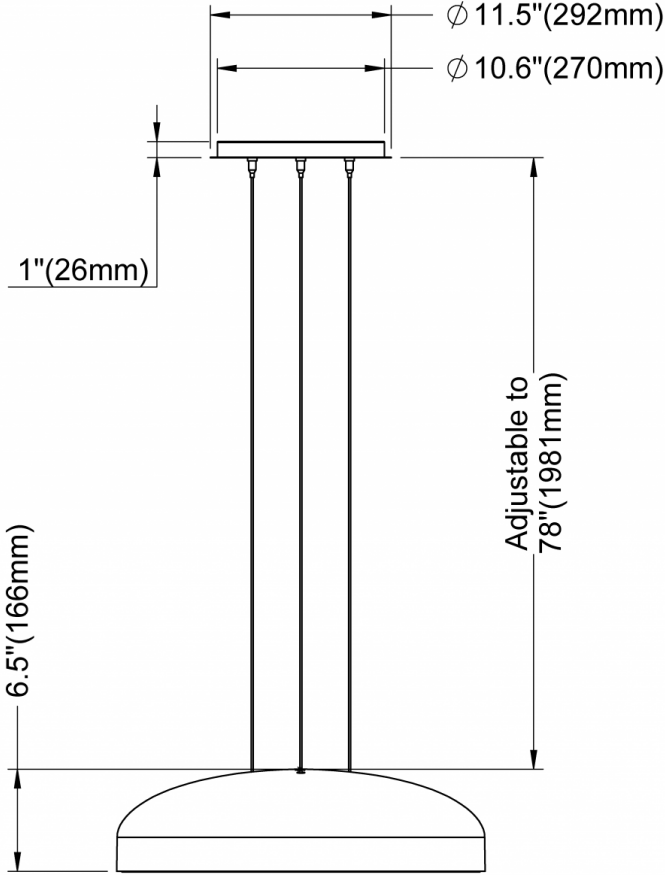


Isometric View

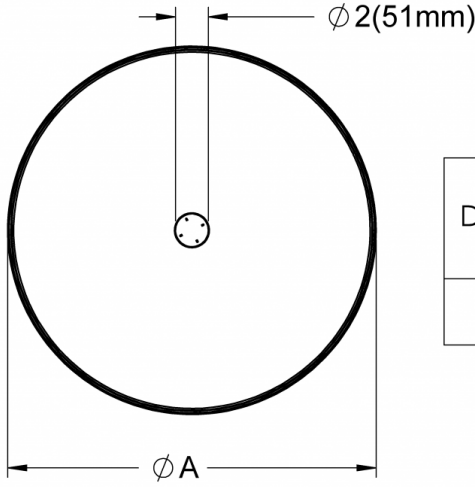


Diameter	Warp Hemi 18"	Warp Hemi 24"
A	17.7" (450mm)	23.4" (594mm)

Warp Hemi Pendant 18" / 24"
 CN2 - Canopy B (Remote)



Isometric View



Diameter	Warp Hemi 18"	Warp Hemi 24"
A	17.7" (450mm)	23.4" (594mm)