

WARP™ - POWER CORD SUSPENDED

Project Name:

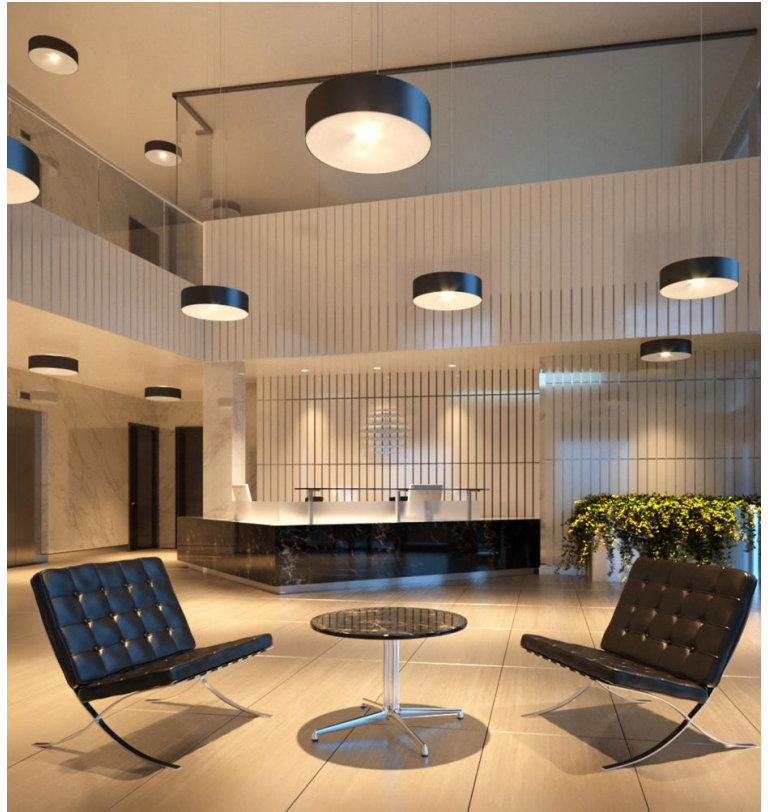
Fixture Type:

Fixture Code:

Quantities:



WARP™ - POWER CORD SUSPENDED



WARP™ - POWER CORD SUSPENDED

Our revolutionary triple circuit luminaire delivers high efficiency diffused, spot and indirect light, allowing you to transition from general ambient to mood lighting. Available in two sizes 18" (457mm) & 24" (610mm), the **WARP** family offers two styles of pendant plus a ceiling mounted version. The color temperature of each light source can be individually selected to deliver an effect best suited to the application. New to the WARP are a wide array of contemporary decorative colors to accent your architectural scene.

GENERAL SPECIFICATION

Body

Aluminum and steel.

Suspension

Steel cables.

Integral emergency system

Emergency option provides a 1.5 hour (3 hours for EU) emergency lighting facility. The self contained system includes the inverter module, NiCad batteries, LED charge indicator and test switch (NA only). Integral emergency EU luminaires have a 10.5" (270mm) DIA x 2" (48mm) height canopy with LED charge indicator. Not available with a 347V supply.

Diffuser

Acrylic.

Drivers

HPF electronic drivers for 120-277V, 347V, (EU-240V)

Delivered lumens

Delivered lumens & LPW based on 4000K (min 80 CRI).

Approvals

Damp Location (Indoor use only).

Designed by

Serge Cornelissen.

Canopy finish

Powder coated.

Power cable

Silver braided.

Remote emergency

Emergency option provides a 1.5 hour (3 hours for EU) emergency lighting facility. The remote system includes the inverter module, NiCad batteries and a remote wall/ceiling LED charge indicator and test switch (NA only) Maximum distance between wall/ceiling plate and luminaire is 15' (4.5m). Test switch fits a single gang box (not supplied).

Mechanical

Luminaires mount directly to a J box (by others - North America only).

L70 @25°C

> 50,000 hrs.

Design

US Pat. No. D893,083.

MOUNTING & OPTICS



Suspended Direct Suspended Direct/Indirect

WARP™ - POWER CORD SUSPENDED

HOW TO ORDER

A. LUMINAIRE

WARP1P18 18", Direct, 3300 lms Direct **WARP1P24** 24", Direct, 4900 lms Direct **WARP2P18** 18", Direct/Indirect, 3300 lms Direct, 2400 lms Indirect **WARP2P24** 24", Direct/Indirect, 4900 lms Direct, 2400 lms Indirect

B. LUMENS (DIRECT)

LMA0200 2000 lm **LMA0330** 3300 lm **LMA0490** 4900 lm

C. LUMENS (INDIRECT)

LMB0000 Not required **LMB0120** 1200 lm **LMB0180** 1800 lm **LMB0240** 2400 lm

D. CRI

CR80 CRI 80+

E. CCT

CTA30 3000K **CTA35** 3500K **CTA40** 4000K

F. UPLIGHT DIFFUSER

UD0 Not required **UD1** Clear diffuser **UD2** Opal diffuser

G. VOLTAGE

V1 120/277V **V2** 240V ¹ **V3** 347V ²

¹ Not available in North America.

² Available with DA01 dimming only.

H. DIMMING

DA01 0-10V Dimming 1.0% **DA02** 0-10V Dimming 0.1% ¹ **DA20** DALI Dimming 0.1% ¹ **DA21** DALI Dimming 1.0% ¹
DA30 DSI/switchDim ^{1 2}

¹ Not available with V3.

² Not available in North America.

I. FIXTURE FINISH

FA01 White **FA02** Black Metallic - Textured **FA20** Silver Metallic - Textured **FA25** Gold Metallic - Textured
FA44 Midnight Blue Metallic - Textured **FA45** Copper Metallic **FA46** Charcoal Metallic - Textured **FA47** Bronze Metallic - Textured
FA52 Champagne Metallic **FA53** Red Metallic - Textured

J. CANOPY FINISH

CF01 White **CF02** Black Metallic - Textured **CF20** Silver Metallic - Textured **CF25** Gold Metallic - Textured
CF44 Midnight Blue Metallic - Textured **CF45** Copper Metallic **CF46** Charcoal Metallic - Textured **CF47** Bronze Metallic - Textured
CF52 Champagne Metallic **CF53** Red Metallic - Textured

K. EMERGENCY

E0 Not required **E1** Emergency system - Integral **E2** Emergency system - Remote



WARP™ - POWER CORD SUSPENDED

L. DOWNLIGHT SPOT

DL00 Not required

DL27 Downlight 28W, 2700K (1730 delivered lms)

DL30 Downlight 28W, 3000K (1799 delivered lms)

DL35 Downlight 28W, 3500K (1854 delivered lms)

DL40 Downlight 28W, 4000K (1858 delivered lms)

CIRCUITS

CS1 Single Circuit ¹

CS2 Dual Circuit ²

CS3 Triple Circuit ³

¹ The entire fixture will be on one circuit, 1 power cable will be supplied.

² Spot light will be on a separate circuit from the main fixture. One power cable will be supplied. If the Spot light is not selected, then Direct and Indirect will be on a separate circuit.

³ Direct, Indirect and Spot light will all be on separate circuits. Two power cables will be supplied.



WARP™ - POWER CORD SUSPENDED

TECHNICAL DATA

LUMINAIRE

Code	WARP1P18	WARP1P24	WARP2P18	WARP2P24
Diameter (A)	18"	24"	18"	24"
Light Direction	Direct	Direct	Direct/Indirect	Direct/Indirect
Wattage	22W	34W	43W	54W
Delivered lms (Direct)	3300	4900	3300	4900
Delivered lms (Indirect)			2400	2400
LPW	146	145	131	132
Height (B)	6"	6.5"	6"	6.5"

FIXTURE FINISH



CANOPY FINISH



WARP™ - POWER CORD SUSPENDED

APPROVALS



DAMP
LOCATION



IP20



WARP™ - POWER CORD SUSPENDED

DIMENSIONAL DIAGRAMS

