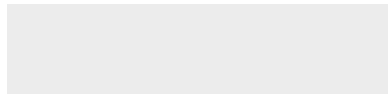


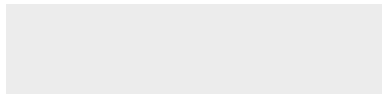


WARP™

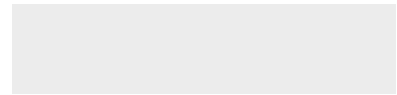
FULL SPECIFICATION SHEET



FIXTURE TYPE



FIXTURE CODE

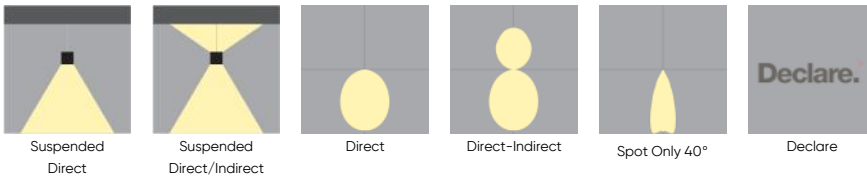


QUANTITIES

1 DESCRIPTION

Our revolutionary triple circuit luminaire delivers high efficiency diffused, spot and indirect light, allowing you to transition from general ambient to mood lighting. Available in two sizes 18" (457mm) & 24" (610mm), the **WARP** family offers two styles of pendant plus a ceiling mounted version. The color temperature of each light source can be individually selected to deliver an effect best suited to the application. New to the **WARP** are a wide array of contemporary decorative colors to accent your architectural scene.

2 OPTICS & FEATURES



3 APPROVALS



4 GENERAL SPECIFICATION

BODY

Aluminum and steel.

CANOPY FINISH

Powder coated.

SUSPENSION

Power over Suspension. Standard power options available, consult factory.

REMOTE EMERGENCY

Emergency option provides a 1.5 hour (3 hours for EU) emergency lighting facility. The remote system includes the inverter module, NiCad batteries and a remote wall/ceiling LED charge indicator and test switch (NA only) Maximum distance between wall/ceiling plate and luminaire is 15' (4.5m). Test switch fits a single gang box (not supplied).

REMOTE MOUNTING OF DRIVERS

Wire Size (max distance from canopy to drivers) 18 AWG - 9.5' (2.9m), 16 AWG - 19.5' (5.9m), 14 AWG - 29.5' (9.0m). Drivers must be accessible after installation.

DELIVERED LUMENS

Delivered lumens & LPW based on 4000K (min 80 CRI).

L70 @25°C

> 50,000 hrs.

DESIGN

US Pat. No. D893,083.

LENS

Acrylic.

DRIVERS

HPF electronic drivers for 120-277V, 347V, (EU-240V). The driver is integral to the fixture housing.

MECHANICAL

Luminaires mount directly to a J box (by others - North America only).

SENSORS

Consult factory regarding sensor compatibility.

APPROVALS

Damp Rated.

DESIGNED BY

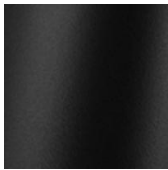
Serge Cornelissen.

5 DESIGN OPTIONS

FIXTURE FINISH



White



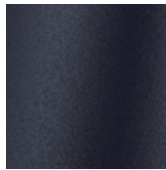
Black
Metallic -
Textured



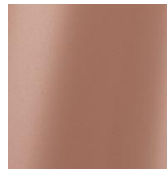
Silver
Metallic -
Textured



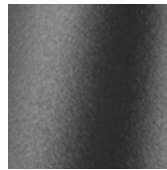
Gold Metallic
- Textured



Midnight
Blue Metallic
- Textured



Copper
Metallic



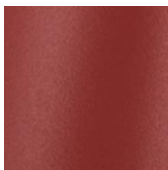
Charcoal
Metallic -
Textured



Bronze
Metallic -
Textured



Champagne
Metallic



Red Metallic
- Textured

CANOPY FINISH



6 HOW TO ORDER

1. LUMINAIRE

WRPP1P18 18" Direct, 3300 lms **WRPP1P24** 24" Direct, 4900 lms **WRPP2P18** 18" Direct/Indirect, 3300 lms Direct, 2400 lms Indirect **WRPP2P24** 24" Direct/Indirect, 4900 lms Direct, 2400 lms Indirect

2. LUMENS (DIRECT)

LMA0200 2000 lm **LMA0330** 3300 lm **LMA0490** 4900 lm

3. LUMENS (INDIRECT)

LMB0000 Not required **LMB0120** 1200 lm **LMB0180** 1800 lm **LMB0240** 2400 lm

4. CRI

CR80 CRI 80+

5. CCT - DIRECT

CTA27 2700K **CTA30** 3000K **CTA35** 3500K **CTA40** 4000K

6. CCT - INDIRECT

CTB00 Not required **CTB27** 2700K **CTB30** 3000K **CTB35** 3500K
CTB40 4000K

7. CCT – DIRECT SPOT

CTC00 Not required	CTC27 2700K, (1730 lms)	CTC30 3000K, (1800 lms)	CTC35 3500K, (1900 lms)
CTC40 4000K, (1900 lms)			

Beam angle for Downlight Spot is 40°.

8. INDIRECT LENS

UD0 Not required	UD1 Clear	UD2 Opal
-------------------------	------------------	-----------------

9. VOLTAGE

V1 120/277V	V2 240V ¹	V3 347V ²
--------------------	-----------------------------	-----------------------------

¹ Not available in North America. ² Available with DA01 dimming only.

10. DIMMING

DA01 0–10V Dimming 1.0%	DA02 0–10V Dimming 0.1% ¹	DA20 DALI Dimming 0.1% ¹	DA21 DALI Dimming 1.0% ¹
DA30 DSI/switchDim ^{1 2}			

¹ Not available with V3. ² Not available in North America.

11. FIXTURE FINISH

FA01 White	FA02 Black Metallic – Textured	FA20 Silver Metallic – Textured	FA25 Gold Metallic – Textured
FA44 Midnight Blue Metallic – Textured	FA45 Copper Metallic	FA46 Charcoal Metallic – Textured	FA47 Bronze Metallic – Textured
FA52 Champagne Metallic	FA53 Red Metallic – Textured		

12. CANOPY

CN1 Canopy A ¹	CN2 Canopy B ²
----------------------------------	----------------------------------

¹ Drivers are integral within the canopy. ² Drivers are in a remote box.

13. CANOPY FINISH

CF01 White	CF02 Black Metallic – Textured	CF20 Silver Metallic – Textured	CF25 Gold Metallic – Textured
CF44 Midnight Blue Metallic – Textured	CF45 Copper Metallic	CF46 Charcoal Metallic – Textured	CF47 Bronze Metallic – Textured
CF52 Champagne Metallic	CF53 Red Metallic – Textured		

14. EMERGENCY

E0 Not required

E2 Emergency system – Remote

15. CIRCUITS

CS1 Single Circuit ¹

CS2 Dual Circuit ²

CS3 Triple Circuit ³

¹ The entire fixture will be on one circuit.

² Spot light will be on a separate circuit from the main fixture. If the Spot light is not selected, then Direct and Indirect will be on a separate circuit.

³ Direct, Indirect and Spot light will all be on separate circuits.

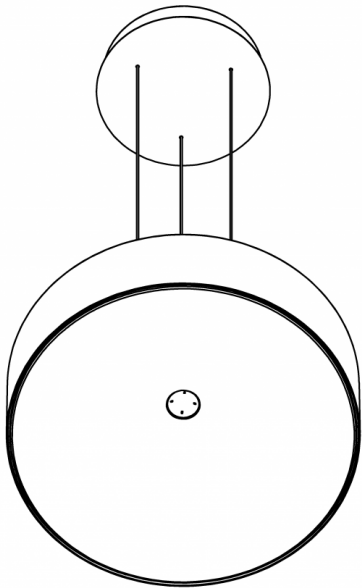
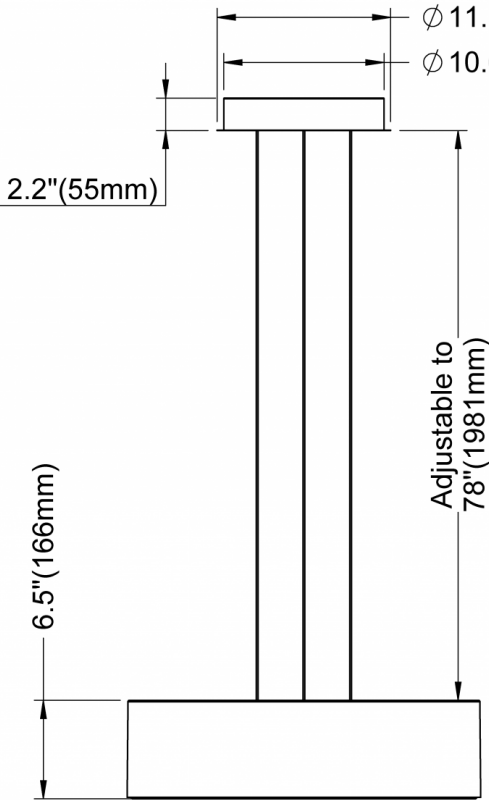
7 TECHNICAL DATA

LUMINAIRE

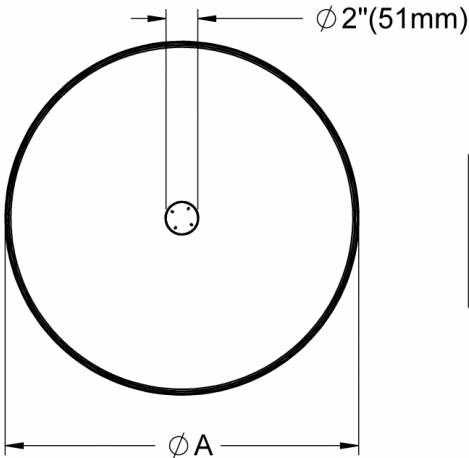
Code	WRPP1P18	WRPP1P24	WRPP2P18	WRPP2P24
Diameter (A)	18"	24"	18"	24"
Light Direction	Direct	Direct	Direct/Indirect	Direct/Indirect
Wattage	22	34	43	54
Delivered lms (Direct)	3300	4900	3300	4900
Delivered lms (Indirect)			2400	2400
LPW	146	145	131	132
Height (B)	6"	6.5"	6"	6.5"

Warp Flat Pendant 18" / 24"

Canopy: CN1 - Canopy A (Integral)
Type: Direct, Direct/Indirect (Two Light Source)
Canopy: CN1 - Canopy A (Integral)
Type: Direct, Direct/Indirect (Three Light Source)
Dimming: DA01
Voltage: V1



Isometric View



Diameter	Warp Flat 18"	Warp Flat 24"
A	17.7"(450mm)	23.4"(594mm)

Warp Flat Pendant 18" / 24"

Canopy: CN1 - Canopy A (Integral)

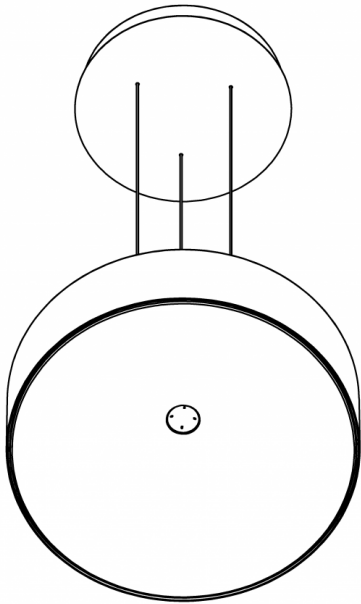
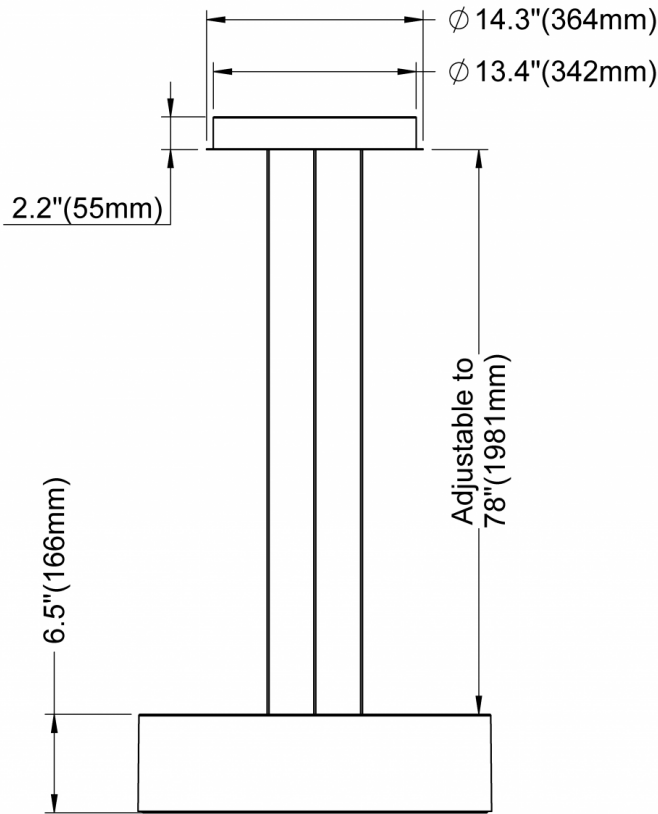
Type: Direct/Indirect (Three Light Source)

Voltage: V2

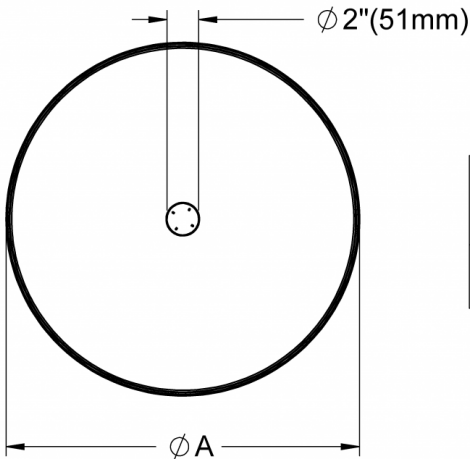
Canopy: CN1 - Canopy A (Integral)

Type: Direct, Direct/Indirect (Three Light Source)

Voltage: V1 Dimming: DA02, DA20, DA21



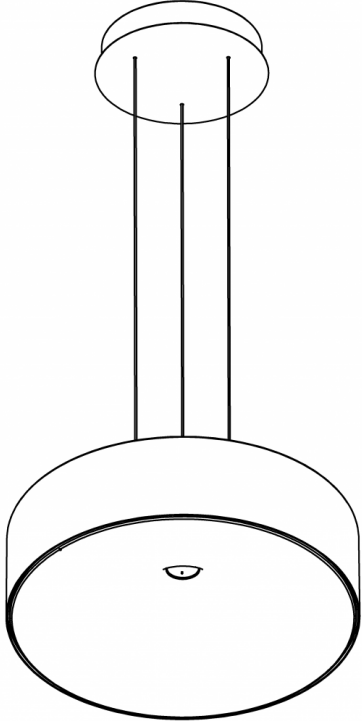
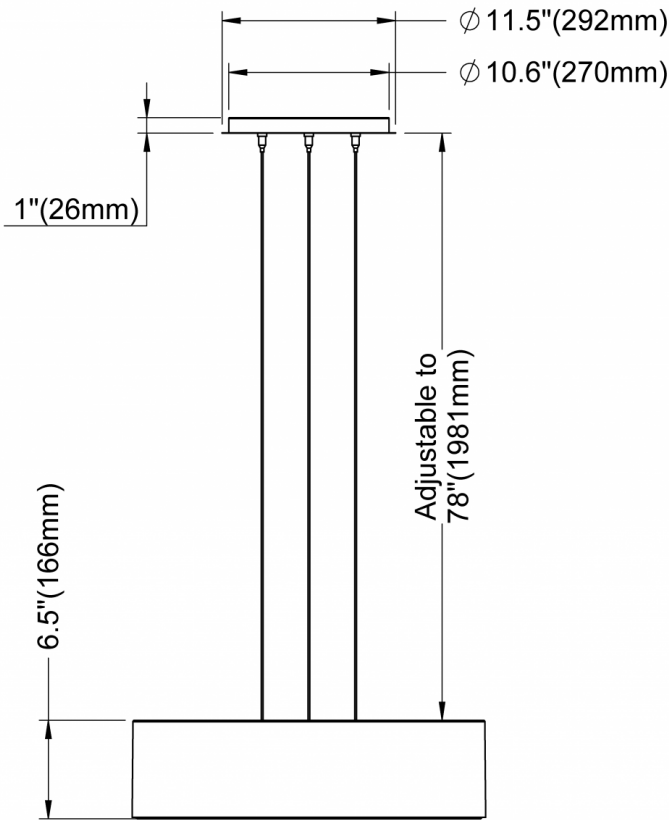
Isometric View



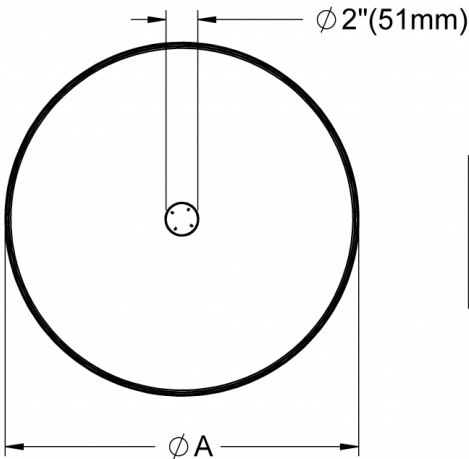
Diameter	Warp Flat 18"	Warp Flat 24"
A	17.7"(450mm)	23.4"(594mm)

Warp Flat Pendant 18" / 24"

Canopy: CN2 - Canopy B (Remote)



Isometric View



Diameter	Warp Flat 18"	Warp Flat 24"
A	17.7"(450mm)	23.4"(594mm)