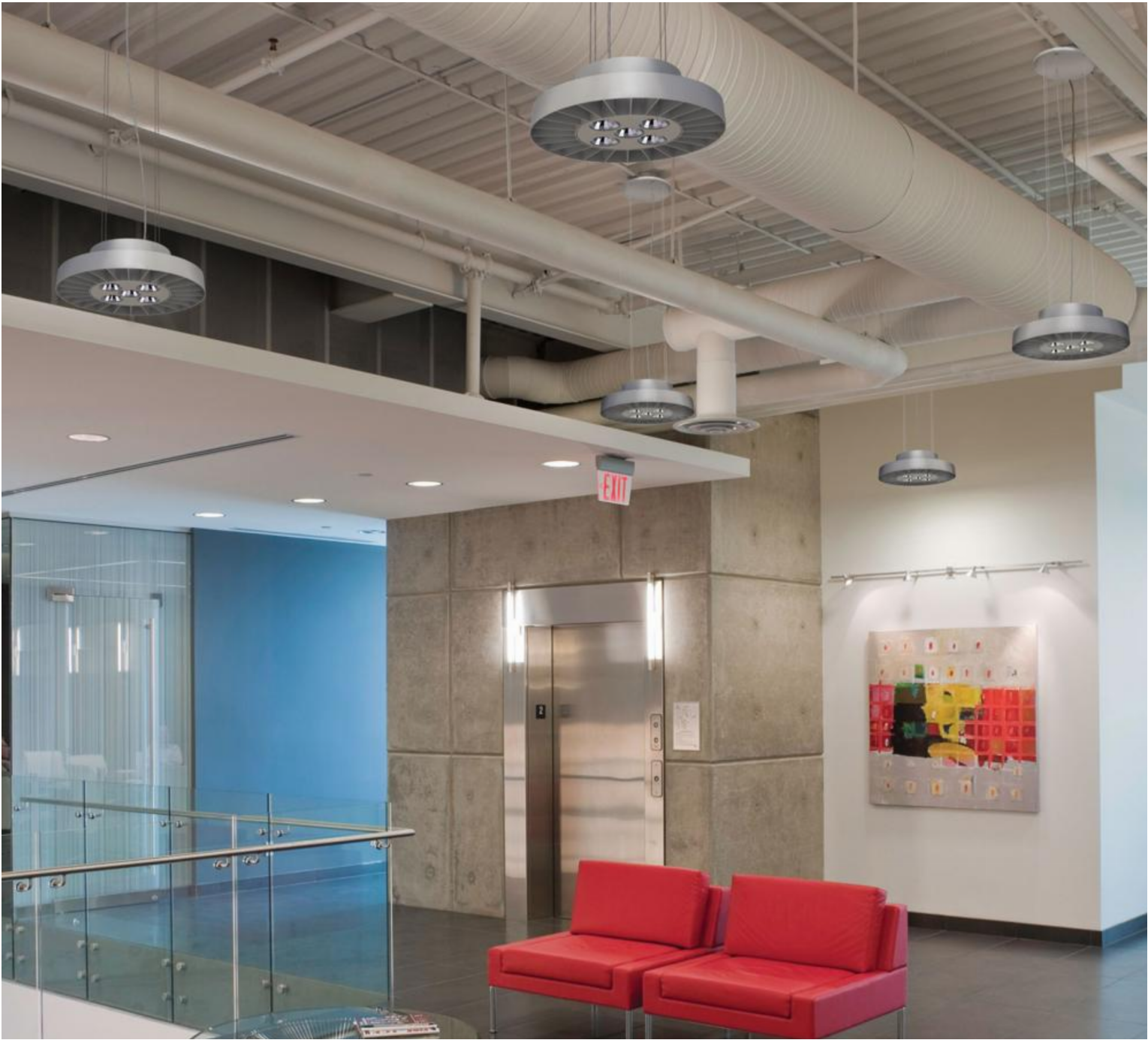
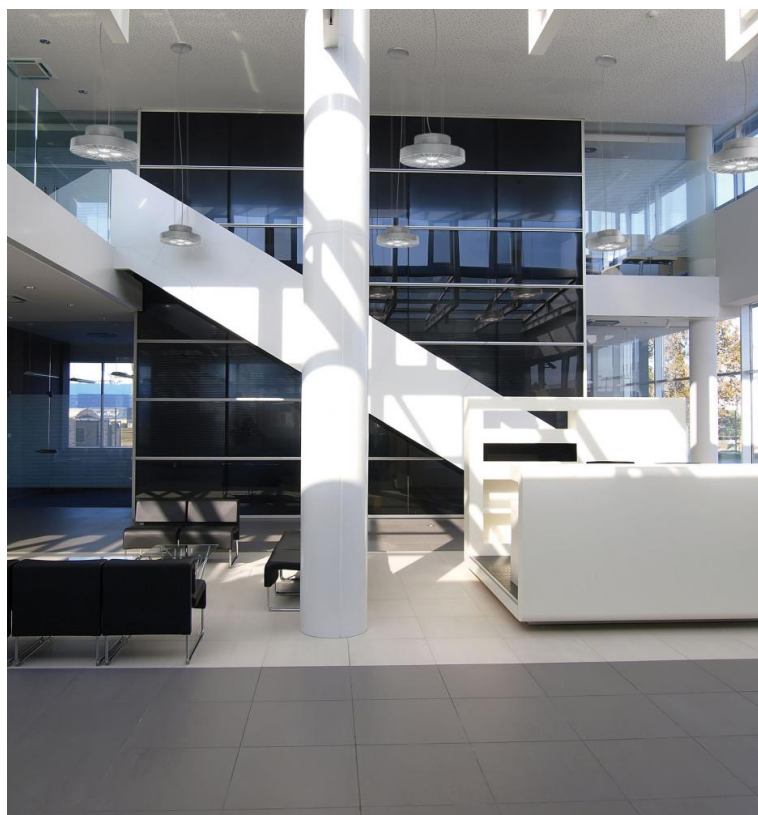
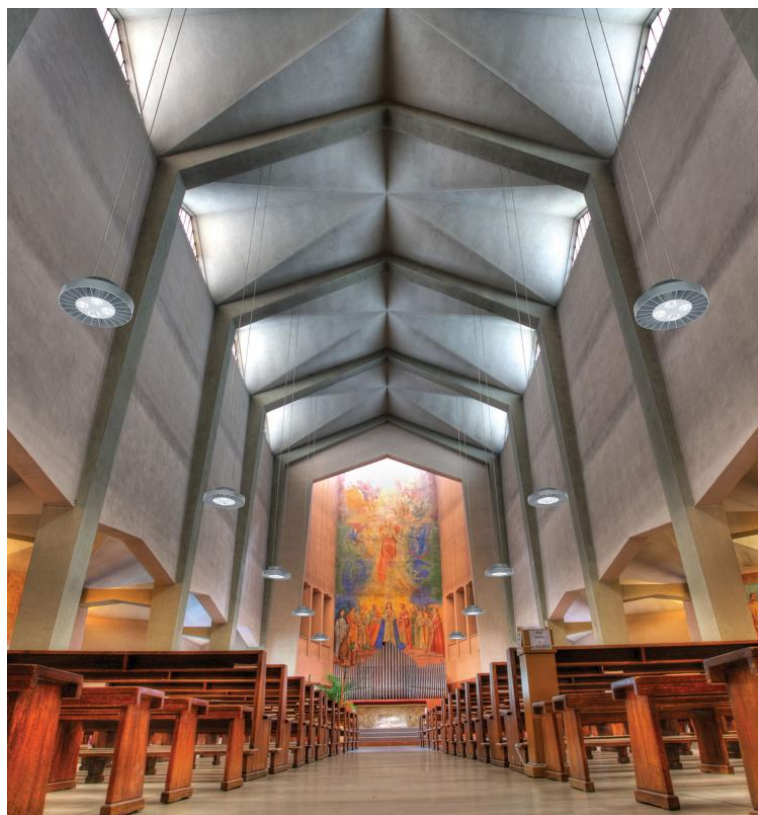


# XACARA L™ - SUSPENDED - DIRECT

Project Name:	Fixture Type:
Fixture Code:	Quantities:



## XACARA L™ - SUSPENDED - DIRECT



# XACARA L™ - SUSPENDED - DIRECT

The raw design delivers primal functionality in light performance and to interior aesthetics. Choose between 4, 5, and 6 LED modules to optimize light levels according to the application. **XACARA** packs light outputs suitable for industrial settings, warehouses, and superstores.

## GENERAL SPECIFICATION

### Body

Die cast aluminum and steel.

### Suspension

Three or four stainless steel aircraft cables.

### Drivers

120/277V (EU-240V) electronic with 0-10V dimming (10%). The driver is integral to the fixture housing.

### Reflectors

Aluminum, specular finish with vertical facets.

### Integral

Emergency option provides a 1.5 hour (3 hours for EU) emergency lighting facility. The self contained system includes the inverter module, NiCad batteries, LED charge indicator and test switch (NA only). Integral emergency luminaires have a 50mm/2" extended ballast housing. Not available with a 347V supply.

### Reported L70 @25°C (77°F)

> 60,000 hrs.

### Note

Photometric testing performed using LM79 procedures.

### Finish

Powder coated.

### Power cable

Silver braided.

### Decorative disc (optional)

6mm/0.25" green tint acrylic (faux glass) with a polished edge and a etched face.

### Delivered Lumens

Delivered lumens & LPW based on 3000K (min 80 CRI).

### Remote

Emergency option provides a 1.5 hour (3 hours for EU) emergency lighting facility.

The remote system includes the inverter module, NiCad batteries and a remote wall/ceiling LED charge indicator and test switch (NA only) Maximum distance between wall/ceiling plate and luminaire is 4.5m/15'. Test switch fits a single gang box (not supplied).

### Approvals

Damp Rated.

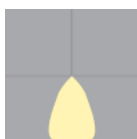
### Sensors

Consult factory regarding sensor compatibility.

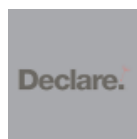
## MOUNTING & OPTICS



Suspended Direct



Direct



Declare

# XACARA L™ - SUSPENDED - DIRECT

## HOW TO ORDER

### A. LUMINAIRE

<b>506705</b> 140W (4 LEDs), 13631 lms	<b>506710</b> 175W (5 LEDs), 17009 lms	<b>506715</b> 210W (6 LEDs), 20362 lms
--	--	--

### B. CCT/CRI

<b>30A</b> 3000K (min 80 CRI)	<b>30B</b> 3000K (min 90 CRI)	<b>35A</b> 3500K (min 80 CRI)	<b>35B</b> 3500K (min 90 CRI)
<b>40A</b> 4000K (min 80 CRI)	<b>40B</b> 4000K (min 90 CRI)		

### C. FINISH

<b>WH</b> White	<b>AP27</b> Black	<b>MS</b> Silver Metallic Textured
-----------------	-------------------	------------------------------------

### D. DIMMING OPTIONS

<b>DA</b> DALI Dimming (10%) (not available with Emergency or 347V)	<b>DX</b> DMX Drivers (supplied with 2 power cords) (not available with Emergency or 347V)
---	--

### E. EMERGENCY OPTIONS

<b>EM</b> Integral Emergency (not available with DALI, DMX, CM or 347V)	<b>RE</b> Remote Emergency (not available with DALI, DMX or 347V)
---	---

### F. OPTIONS

<b>BT</b> Bezel Trim (711mm/28" DIA)	<b>DD</b> Decorative Disc (acrylic)	<b>CM</b> Ceiling Mount (not available with EM (Integral Emergency)	<b>3</b> 347V (not available with DALI, DMX or Emergency Options)
--------------------------------------	-------------------------------------	---	---



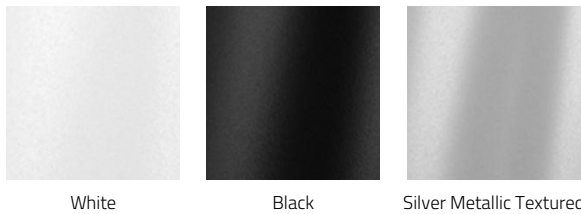
# XACARA L™ - SUSPENDED - DIRECT

## TECHNICAL DATA

### LUMINAIRE

Code	506705	506710	506715
Power	140W (4 LEDs)	175W (5 LEDs)	210W (6 LEDs)
Delivered lms	13631	17009	20362
LPW	103	103	103
Weight	29lb	29lb	29lb

### FINISH



White

Black

Silver Metallic Textured

### APPROVALS



XACARA L™ - SUSPENDED - DIRECT

DIMENSIONAL DIAGRAMS

