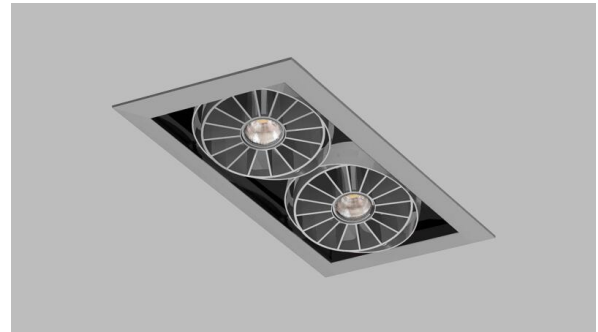




XACARA NC™

FULL SPECIFICATION SHEET



FIXTURE TYPE



FIXTURE CODE

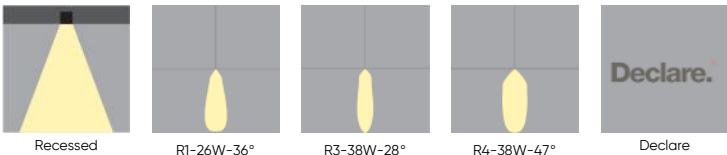


QUANTITIES

1 DESCRIPTION

The raw design of the **XACARA NC** delivers primal functionality in light performance and to interior aesthetics. Optimize light levels and color saturation according to the application by choosing up to 6 spotlights in a single unit, with either medium or wide beam angles, 2 LED powers, and a CRI of 80 or 90. Available in trims White, Black, Silver, or a trimless frame for blending into the architecture. The fixture comes in 3 colors, White, Black and Silver Metallic Textured, providing a cohesive look that can match your space. There are also housing options that meet the Chicago Plenum standard in particular that can be added to the fixture.

2 OPTICS & FEATURES



3 APPROVALS



4 GENERAL SPECIFICATION

HOUSING

Steel. For new construction. Non I.C. rated housing (NA only). Not suitable for insulated ceilings.

ARRAY HOUSINGS

Die cast aluminium.

GIMBAL

Fully articulating on two axes.

TRIMLESS

Housing includes mesh plates for trimless installation in drywall or plaster ceilings. Drywall/plaster compound to be applied up to edge of fixture to achieve a clean edge. Both trim and trimless designs suitable for ceiling thickness 12mm/0.5" to 31mm/1.25".

ELECTRICAL

Access above ceiling not required. Through branch wiring. Driver access from below for ease of maintenance.

REFLECTORS

Highly reflective, specular finish, vacuum plated.

DRIVERS

HPF electronic for 120-277V (EU240V). 0-10V dimming (10%).

DELIVERED LUMENS

Delivered lumens & LPW based on 3000K (min 80 CRI).

REPORTED L70 @25°C(77°F)

>60,000 hrs.

NOTE

Photometric testing performed using LM79 procedures.

TRIM

Removable flange 19mm/0.75" wide.

INTEGRAL EMERGENCY SYSTEM (NA ONLY)

Emergency option provides a 1.5 hour emergency lighting facility. The self contained system includes the inverter module, NiCad batteries, LED charge indicator and test switch.

MOUNTING

Butterfly brackets, C channel, T bar fasteners, bar hangers and suspension points.

PROTECTIVE LENS

Clear glass. 26W LED fixtures only.

FINISH

Powder coated, as specified.

SENSORS

Consult factory regarding sensor compatibility.

APPROVALS

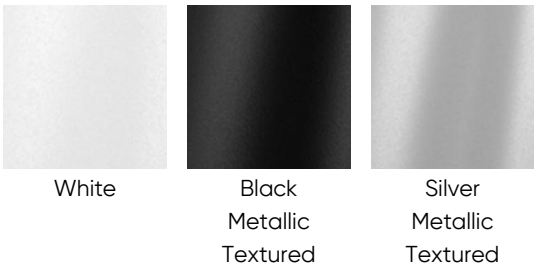
Damp Rated.

SUSTAINABILITY

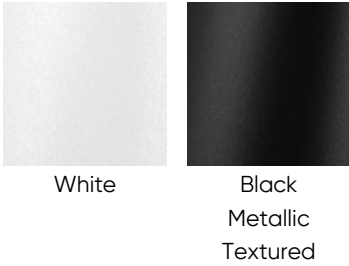
Designed for on-site LED board, driver, and optic replacement. Contact the factory for maintenance documentation.

5 DESIGN OPTIONS

HEAD/GIMBAL FINISH

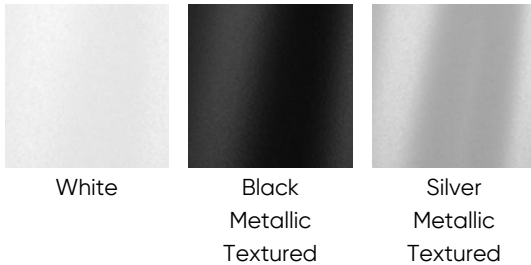


INTERNAL FINISH



TRIM FINISH

No Trim
(Trimless)



6 HOW TO ORDER

1. LUMINAIRE

- 512010 1 spotlight head 512020 2 spotlight heads 512030 3 spotlight heads 512041 4 spotlight heads - Linear
- 512044 4 spotlight heads - Quad 512050 5 spotlight heads 512060 6 spotlight heads

2. BRIDGELUX LED

- LA 3000K, 80 CRI, 2085 lms LB 3000K, 90 CRI, 1689 lms LC 3500K, 80 CRI, 2127 lms LD 3500K, 90 CRI, 1770 lms
- LE 4000K, 80 CRI, 2169 lms LF 4000K, 90 CRI, 1820 lms LG 3000K, 80 CRI, 3045 lms LH 3000K, 90 CRI, 2471 lms
- LI 3500K, 80 CRI, 3133 lms LJ 3500K, 90 CRI, 2674 lms LK 4000K, 80 CRI, 3185 lms LL 4000K, 90 CRI, 2686 lms

3. REFLECTORS

- R1 Medium 36° (Bridgelux-26W) R3 Medium 28° (Bridgelux-38W) R4 Wide 47° (Bridgelux-38W)

4. HEAD/GIMBAL FINISH

- W1 White B1 Black Metallic Textured M1 Silver Metallic Textured

5. INTERNAL FINISH

- W2 White B2 Black Metallic Textured

6. TRIM FINISH

- NT No Trim (Trimless) W3 White B3 Black Metallic Textured M3 Silver Metallic Textured

7. DIMMING

| | | | |
|------------------------------------|--|---------------------------|-----------------------------|
| D1 0-10V Dimming 1% | D2 0-10V Dimming 0.1% | DL DALI Dimming 1% | DA DALI Dimming 0.1% |
| L1 Lutron L3DA3W Hi-Lume 1% | L3 Lutron L3DAE Hi-Lume 1% EcoSystem | | |

8. OPTIONS

| | |
|--------------------------|------------------------------|
| CP Chicago Plenum | EM Integral Emergency |
|--------------------------|------------------------------|

Options shown are available in North America only.

7 TECHNICAL DATA

LUMINAIRE

| | | | | | | |
|-------------|-------------------|-------------------|-------------------|-------------------------------|-----------------------------|-------------------|
| Code | 512010 | 512020 | 512030 | 512041 | 512044 | 512050 |
| Type | 1 spotlight head | 2 spotlight heads | 3 spotlight heads | 4 spotlight heads - Linear | 4 spotlight heads - Quad | 5 spotlight heads |
| Code | 512060 | | | | | |
| Type | 6 spotlight heads | | | | | |

LED

| | | | | | | |
|----------------------|-----------|-----------|-----------|-----------|-----------|-----------|
| Code | LA | LB | LC | LD | LE | LF |
| Power (LED) | 26W | 26W | 26W | 26W | 26W | 26W |
| CCT | 3000K | 3000K | 3500K | 3500K | 4000K | 4000K |
| CRI | 80 | 90 | 80 | 90 | 80 | 90 |
| Size | A | A | A | A | A | A |
| Delivered lms | 2085 | 1689 | 2127 | 1770 | 2169 | 1820 |
| LPW | 80 | 65 | 81 | 68 | 83 | 70 |
| Code | LG | LH | LI | LJ | LK | LL |
| Power (LED) | 38W | 38W | 38W | 38W | 38W | 38W |
| CCT | 3000K | 3000K | 3500K | 3500K | 4000K | 4000K |
| CRI | 80 | 90 | 80 | 90 | 80 | 90 |
| Size | B | B | B | B | B | B |
| Delivered lms | 3045 | 2471 | 3133 | 2674 | 3185 | 2686 |
| LPW | 80 | 65 | 82 | 70 | 83 | 70 |

8 DIMENSIONAL DIAGRAMS

